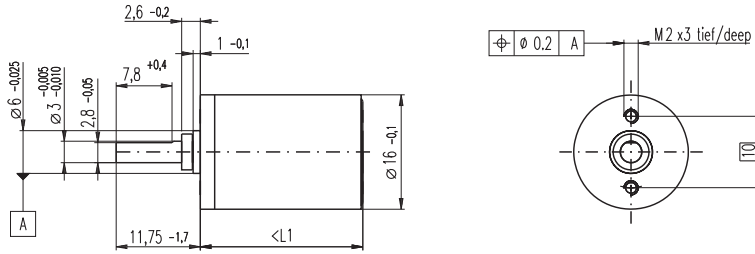


Planetary Gearhead GP 16 A $\varnothing 16$ mm, 0.1 - 0.3 Nm



M 1:1

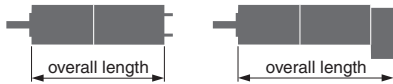
Technical Data

| | |
|---------------------------------------|---------------------------|
| Planetary Gearhead | straight teeth |
| Output shaft | stainless steel, hardened |
| Bearing at output | sleeve bearing |
| Radial play, 6 mm from flange | max. 0.1 mm |
| Axial play | 0.02 - 0.10 mm |
| Max. permissible axial load | 8 N |
| Max. permissible force for press fits | 100 N |
| Sense of rotation, drive to output | = |
| Recommended input speed | < 8000 rpm |
| Recommended temperature range | -15 ... +100°C |
| Extended area as option | -35 ... +100°C |
| Number of stages | 1 2 3 4 5 |
| Max. radial load, 6 mm from flange | 8 N 12 N 16 N 20 N 20 N |

- Stock program
- Standard program
- Special program (on request)

Order Number

| | 110321 | 110322 | 110323 | 118186 | 110324 | 134782 | 110325 | 134785 |
|---|---------|----------|-------------|-----------|----------------|--------------|------------------|----------------|
| Gearhead Data | | | | | | | | |
| 1 Reduction | 4.4 : 1 | 19 : 1 | 84 : 1 | 157 : 1 | 370 : 1 | 690 : 1 | 1621 : 1 | 3027 : 1 |
| 2 Reduction absolute | 57/13 | 3249/169 | 185193/2197 | 19683/125 | 10556001/28561 | 1121931/1625 | 601692057/371293 | 63950067/21125 |
| 3 Max. motor shaft diameter mm | 2 | 2 | 2 | 1.5 | 2 | 2 | 2 | 2 |
| Order Number | 118184 | 134777 | 134778 | | 134780 | 118187 | 134783 | 134786 |
| 1 Reduction | 5.4 : 1 | 24 : 1 | 104 : 1 | | 455 : 1 | 850 : 1 | 1996 : 1 | 3728 : 1 |
| 2 Reduction absolute | 27/5 | 1539/65 | 87723/845 | | 5000211/10985 | 531441/625 | 285012027/142805 | 30292137/8125 |
| 3 Max. motor shaft diameter mm | 1.5 | 2 | 2 | | 2 | 1.5 | 2 | 2 |
| Order Number | | 118185 | 134779 | | 134781 | | 134784 | 118188 |
| 1 Reduction | | 29 : 1 | 128 : 1 | | 561 : 1 | | 2458 : 1 | 4592 : 1 |
| 2 Reduction absolute | | 729/25 | 41553/325 | | 2368521/4225 | | 135005697/54925 | 14348907/3125 |
| 3 Max. motor shaft diameter mm | | 1.5 | 2 | | 2 | | 2 | 1.5 |
| 4 Number of stages | 1 | 2 | 3 | 3 | 4 | 4 | 5 | 5 |
| 5 Max. continuous torque Nm | 0.10 | 0.15 | 0.20 | 0.20 | 0.25 | 0.25 | 0.30 | 0.30 |
| 6 Intermittently permissible torque at gear output Nm | 0.150 | 0.225 | 0.300 | 0.300 | 0.375 | 0.375 | 0.450 | 0.450 |
| 7 Max. efficiency % | 90 | 81 | 73 | 73 | 65 | 65 | 59 | 59 |
| 8 Weight g | 20 | 23 | 27 | 27 | 31 | 31 | 35 | 35 |
| 9 Average backlash no load ° | 1.4 | 1.6 | 2.0 | 2.0 | 2.4 | 2.4 | 3.0 | 3.0 |
| 10 Mass inertia gcm ² | 0.07 | 0.05 | 0.05 | 0.04 | 0.05 | 0.05 | 0.05 | 0.05 |
| 11 Gearhead length L1 mm | 15.5 | 19.1 | 22.7 | 22.7 | 26.3 | 26.3 | 29.9 | 29.9 |



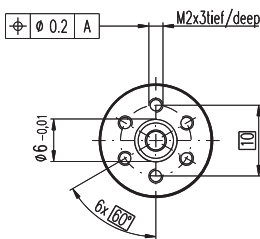
maxon Modular System

| + Motor | Page | + Sensor / Brake | Page | Overall length [mm] = Motor length + gearhead length + (sensor / brake) + assembly parts | | | | | | | |
|-------------------|---------|------------------|---------|--|------|------|------|------|------|------|------|
| RE 16, 2 W | 72 | | | 37.9 | 41.5 | 45.1 | 45.1 | 48.7 | 48.7 | 52.3 | 52.3 |
| RE 16, 2 W | 72 | MR | 260/262 | 43.6 | 47.2 | 50.8 | 50.8 | 54.4 | 54.4 | 58.0 | 58.0 |
| RE 16, 3.2 W | 73/74 | | | 56.0 | 59.6 | 63.2 | 63.2 | 66.8 | 66.8 | 70.4 | 70.4 |
| RE 16, 3.2 W | 74 | MR | 260/262 | 61.0 | 64.6 | 68.2 | 68.2 | 71.8 | 71.8 | 75.4 | 75.4 |
| RE 16, 3.2 W | 74 | MEnc 13 | 275 | 62.1 | 65.7 | 69.3 | 69.3 | 72.9 | 72.9 | 76.5 | 76.5 |
| RE 16, 4.5 W | 75/76 | | | 59.0 | 62.6 | 66.2 | 66.2 | 69.8 | 69.8 | 73.4 | 73.4 |
| RE 16, 4.5 W | 76 | MR | 260/262 | 64.0 | 67.6 | 71.2 | 71.2 | 74.8 | 74.8 | 78.4 | 78.4 |
| RE 16, 4.5 W | 76 | MEnc 13 | 275 | 65.1 | 68.7 | 72.3 | 72.3 | 75.9 | 75.9 | 79.5 | 79.5 |
| A-max 16 | 93-96 | | | 41.0 | 44.6 | 48.2 | 48.2 | 51.8 | 51.8 | 55.4 | 55.4 |
| A-max 16 | 94/96 | MR | 260/262 | 46.0 | 49.6 | 53.2 | 53.2 | 56.8 | 56.8 | 60.4 | 60.4 |
| A-max 16 | 94/96 | MEnc 13 | 275 | 49.1 | 52.7 | 56.3 | 56.3 | 59.9 | 59.9 | 63.5 | 63.5 |
| RE-max 17 | 123-126 | | | 41.0 | 44.6 | 48.2 | 48.2 | 51.8 | 51.8 | 55.4 | 55.4 |
| RE-max 17 | 124/126 | MR | 260/262 | 46.0 | 49.6 | 53.2 | 53.2 | 56.8 | 56.8 | 60.4 | 60.4 |
| EC 16, 15 W | 147 | | | 55.8 | 59.4 | 63.0 | 63.0 | 66.6 | 66.6 | 70.2 | 70.2 |
| EC 16, 15 W | 147 | MR | 263 | 65.9 | 69.5 | 73.1 | 73.1 | 76.7 | 76.7 | 80.3 | 80.3 |
| EC-max 16, 5 W | 165 | | | 39.6 | 43.2 | 46.8 | 46.8 | 50.4 | 50.4 | 54.0 | 54.0 |
| EC-max 16, 5 W | 165 | MR | 263 | 46.9 | 50.5 | 54.1 | 54.1 | 57.7 | 57.7 | 61.3 | 61.3 |
| EC-max 16, 2-wire | 166 | | | 49.1 | 52.7 | 56.3 | 56.3 | 59.9 | 59.9 | 63.5 | 63.5 |

Option Ball Bearing

Order Number

Technical Data



| | | | | | |
|---------|--------|----------|--------|---|----------------------------------|
| 4.4 : 1 | 138333 | 455 : 1 | 138343 | Planetary Gearhead | straight teeth |
| 5.4 : 1 | 138334 | 561 : 1 | 138344 | Output shaft | stainless steel, hardened |
| 19 : 1 | 138335 | 690 : 1 | 138345 | Bearing at output | preloaded ball bearings |
| 24 : 1 | 138336 | 850 : 1 | 138346 | Radial play, 6 mm from flange | max. 0.08 mm |
| 29 : 1 | 138337 | 1621 : 1 | 138347 | Axial play at axial load | < 4 N 0 mm > 4 N max. 0.05 mm |
| 84 : 1 | 138338 | 1996 : 1 | 138348 | Max. permissible axial load | 8 N |
| 104 : 1 | 138339 | 2458 : 1 | 138349 | Max. permissible force for press fits | 25 N |
| 128 : 1 | 138340 | 3027 : 1 | 138350 | Sense of rotation, drive to output | = |
| 157 : 1 | 138341 | 3728 : 1 | 138351 | Recommended input speed | < 8000 rpm |
| 370 : 1 | 138342 | 4592 : 1 | 138352 | Recommended temperature range | -15 ... +100°C |
| | | | | Extended area as option | -35 ... +100°C |
| | | | | Number of stages | 1 2 3 4 5 |
| | | | | Max. radial load, 6 mm from flange | 10 N 15 N 20 N 20 N 20 N |
| | | | | Gearhead values according to sleeve bearing version | |