

RELAYS  
FIELD BUS CONNECTORS  
CIRCUIT BREAKERS  
OVERVOLTAGE PROTECTORS  
CABLE AND ELECTRONIC FUSES PRODUCTS  
DIN-RAIL MOUNTED TERMINAL BLOCKS  
TOOLS & MARKING SYSTEMS



PROTECTED CONNECTORS  
PCB CONNECTORS & TERMINAL BLOCKS  
SIGNAL CONDITIONERS  
POWER SUPPLIES  
WIRING SOLUTIONS

2004-2005

When good enough just isn't good enough

**Weidmüller** 



## TABLE OF CONTENTS

<b>Wiring Solutions for Your Application</b> .....	<b>3</b>
<b>Wiring Solutions that Maximize Space Utilization</b> .....	<b>4</b>
<b>Wiring Solutions that Optimize Control System Performance</b> .....	<b>6</b>
<b>Wiring Solutions that Streamline Control System Staging and Maintenance</b> .....	<b>8</b>
<b>Wiring Solutions that Reduce Control System Installation Time</b> .....	<b>10</b>
<b>Relays</b> .....	<b>12</b>
<b>Signal Conditioners and Monitoring Modules</b> .....	<b>14</b>
<b>Power Delivery Solutions</b> .....	<b>16</b>
<b>Diode Modules</b> .....	<b>17</b>
<b>Electronic Fuses</b> .....	<b>17</b>
<b>Overvoltage Protection</b> .....	<b>18</b>
<b>Cable Interface Products—Standard</b> .....	<b>20</b>
<b>Cable Interface Products—PLC</b> .....	<b>22</b>
<b>Cable Interface Products—Custom Solutions</b> .....	<b>23</b>
<b>Cable Interface Products—Accessories</b> .....	<b>24</b>
<b>Sensor-Actuator-Integrator (SAI) Series</b> .....	<b>25</b>
<b>DIN-Rail Terminal Blocks—W-Series</b> .....	<b>28</b>
<b>DIN-Rail Terminal Blocks—Z-Series</b> .....	<b>31</b>
<b>DIN-Rail Terminal Blocks—I-Series</b> .....	<b>34</b>
<b>DIN-Rail Accessories</b> .....	<b>35</b>
<b>Protected Connectors—Heavy Duty</b> .....	<b>36</b>
<b>PCB Terminal Blocks</b> .....	<b>38</b>
<b>PCB Connectors</b> .....	<b>43</b>
<b>Tools</b> .....	<b>47</b>
<b>Marking Systems Products</b> .....	<b>53</b>
<b>Marking Systems Products—Marking Equipment</b> .....	<b>56</b>
<b>Marking Systems Products—Software and Services</b> .....	<b>57</b>
<b>Index</b> .....	<b>58</b>

# WIRING SOLUTIONS FOR YOUR APPLICATION

## Weidmuller Products

At Weidmuller, our goal is straightforward:  
to be your most knowledgeable, reliable,  
and responsive supplier of total wiring  
solutions from the sensor to the system.



### SIGNAL INTERFACE MODULES

- Signal Conditioners
- Power Supplies
- Overvoltage Protection
- Relays
- Circuit Breakers
- Electronic Fuses



### DIN-RAIL MOUNTED TERMINAL BLOCKS

- Screw clamp for 32 and 35 mm
- Tension clamp for 35 mm
- IDC clamp for 35 mm
- Circuit breakers for 35 mm



### PRINTED CIRCUIT BOARD PRODUCTS

- PCB Terminal Blocks
- PCB Connectors



### CABLE INTERFACE MODULES

- Standard Cable Interface
- PLC Cable Interface
- Programming Port
- DIN-Rail Outlet



### PROTECTED COMPONENTS

- Modular
- Metal or plastic housings
- Complete sets



### ENCLOSURES

- Increased Safety Enclosures
- Standard Industrial Enclosures



### HEAVY DUTY CONNECTORS

- Basic Connectors
- Through Panel Connectors
- Modular Connectors



### TOOLS/MARKING PRODUCTS

- Wire Preparation Tools
- Marking Tools/Systems

# WIRING SOLUTIONS FOR YOUR APPLICATION



## WIRING SOLUTIONS ARE A MATTER OF APPLICATION KNOWLEDGE

With over 60 years in the industry, Weidmuller offers unmatched depth in scores of customer applications spanning countries around the world. Not only has our close collaboration with customers inspired new products, it has given us the knowledge to guide you in selecting the wiring solution that most efficiently meets your needs.

## WIRING SOLUTIONS ARE A MATTER OF TECHNICAL EXPERTISE

Weidmuller has a well-deserved reputation for innovative design and high-quality materials along a broad range of interface products. We are committed to bringing new technology to the marketplace,

simplifying traditional tasks and creating new opportunities for our customers. Our commitment to excellence is the reason Weidmuller was the first U.S. supplier of terminal blocks and other interface products to earn ISO 9001 certification.

## WIRING SOLUTIONS ARE A MATTER OF BEING RESPONSIVE

At Weidmuller, we are dedicated to providing our customers with the most responsive service possible. Experienced applications engineers and sales representatives deployed around the country are ready to provide technical support. And thanks to our extensive distribution network, we can ensure that our customers receive the products they need when they need them.

## WIRING SOLUTIONS ARE A MATTER OF VALUE- ADDED SERVICE

At Weidmuller, we do more than provide our customers with the highest quality products at a competitive price. We design our operations with customers in mind. We provide an extensive array of selection guides as well as computerized and web-based tools that streamline ordering. At the same time, we maintain a large inventory of products. Our business enables you to concentrate on yours.



More products are available than shown.  
Please contact us or visit our website: [www.weidmuller.com](http://www.weidmuller.com).

# WIRING SOLUTIONS THAT MAXIMIZE SPACE UTILIZATION

Weidmuller's compact wiring solutions give you the option of extracting more functionality from your available space or significantly reducing the footprint of your application. When space is at a premium, Weidmuller can help you make the most of it.



ZDU 1.5



MCZ Series



WTR 2.5/4

## RAIL/PANEL PRODUCTS

### ■ ZDU 1.5

With an overall width of 3.5 mm (0.14 in), these terminal blocks are the smallest in the industry for TS 35 mounting rails, enabling high packing density. Save space when wiring switchgear cabinets in industrial, process and transportation applications.

### ■ MCZ Series

The MCZ Series offers digital and analog signal processing and pluggable cross-connections, enabling multiple tension clamp modules to be installed easily in a small area.

### ■ WTR 2.5/4

Used with a plug-in SIHA fuse holder, the WTR 4 can be quickly converted to a fuse terminal, saving space by providing two functions in a single terminal block.



Z-ROOF Blocks

### ■ Z-ROOF Blocks

Designed to meet today's requirements for higher mounting density and additional room at the connection level, Z-ROOF tension clamp terminal blocks are up to 36% shorter than standard tension clamp terminal blocks.



WDK 4N/WDK 2.5

### ■ WDK 4N/WDK 2.5

These two-tier terminal blocks allow users to build highly compact terminal points, 120 per 12 inches, on standard DIN-Rail, with feed-through connections on the top and bottom levels or a feed-through on top and a ground connection on bottom.



ZMAK

### ■ ZMAK

The smallest tension clamp motor terminal available, ZMAK enables six, 3-phase AC motors to be connected on a mounting rail of only 1.2 inches.



PLC Interface

### ■ PLC Interface

With our PLC interface, 16 points can be wired in a mere 3.5 inches of rail space, a savings of 20% over typical PLC connectors.



B2L/S2L 3.5 Connection System

## PRINTED CIRCUIT BOARD PRODUCTS

### ■ B2L/S2L 3.5 Double Density Connection System

With two connection rows in one housing, the B2L/S2L tension clamp connection system requires up to 10% less PCB space and up to 30% less front panel space than 2.5/2.54 pitch connectors. No special tools required.



SLD

### ■ SLD

The double level pin headers conserve PCB space by allowing you to stack connections instead of spreading them out on the board.



BL I/O 3.5

### ■ BL I/O 3.5

This innovative plug combines the advantages of rail-mounted field device connection systems with the compactness of our BL 3.5/SL 3.5 connector system.



LM3R

### ■ LM2NZF/LM3RZF and LM2N/LM3R

For high packaging density on a PCB, these 5.08 double- and triple-level terminal blocks are ideal. Available with tension clamp or screw clamp termination.

# WIRING SOLUTIONS THAT OPTIMIZE CONTROL SYSTEM PERFORMANCE

Weidmuller offers wiring solutions that help you get the most out of your system, ensuring stable and reliable performance even under the most rigorous conditions.



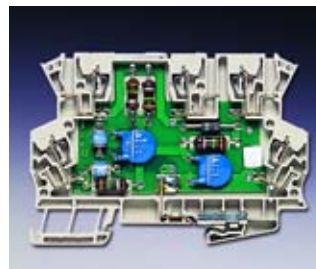
WAVESERIES Signal Conditioners



Power Delivery Solutions



MICRO Series



Circuit Protection

## CONTROL PANEL PRODUCTS

### ■ WAVESERIES Signal Conditioners

This new generation of analog signal conditioners includes products with two- and three-way separation, as well as RTD and thermo conditioners.

### ■ Power Delivery Solutions

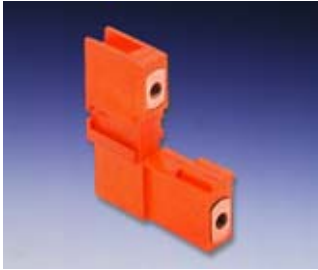
Overcurrent shutdown with automatic restart ensures stable and reliable system performance.

### ■ MICRO Series

With all the standard Weidmuller features, these single channel screw clamp or tension clamp relay and optocoupler products are the smallest available—at 6.1 mm (0.24 in) thick.

### ■ Circuit Protection

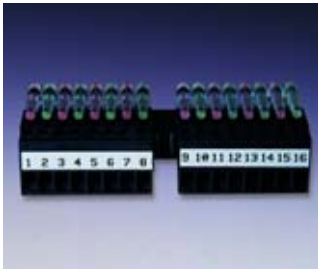
Surge protection degrades the harmful effect of electrical overvoltage and electrical noise which effects system performance and usage.



Locking Block Connectors



Strain Relief and Strain Relief Hoods



LED Indicators and LED Holders



PS 2.0 Test Plugs

## PRINTED CIRCUIT BOARD PRODUCTS

### ■ Locking Connectors

Ideal for high vibration applications or where added security is required, our locking blocks can fasten headers more securely to printed circuit boards and lock plugs to their corresponding headers.

### ■ Strain Relief and Strain Relief Hoods

These PCB accessories enable you to bundle wires together, while reducing stress when plugging and unplugging connectors.

### ■ LED Indicators and LED Holders

These curve-shaped LED indicators ensure easy viewing and more efficient monitoring of circuit conditions. LED holders can be attached to the back of either single-, double- or triple-level PCB terminal blocks.

### ■ PS 2.0 Test Plugs

A variety of our PCB terminal blocks have built-in test points that accommodate our PS 2.0 test plugs.



Disconnect Elements



Gold Contacts



Ferrules

### ■ Disconnect Elements

Easily adapted to single-, double- or triple-level PCB terminal blocks, these monitoring devices may be dovetailed together for up to a maximum of 24 poles.

## ACCESSORIES

### ■ Gold Contacts

We offer products with gold contacts for applications in rigorous conditions.

### ■ Ferrules

Wire-end ferrules guarantee long-term consistent quality of your electrical connection.



# WIRING SOLUTIONS THAT STREAMLINE CONTROL SYSTEM STAGING AND MAINTENANCE

Weidmuller's modular wiring solutions are designed to make staging and maintenance as effortless as possible.



20A ECOLINE Power Supply

## RAIL/PANEL PRODUCTS

### ■ NEW! ECOLINE Power Delivery Solutions

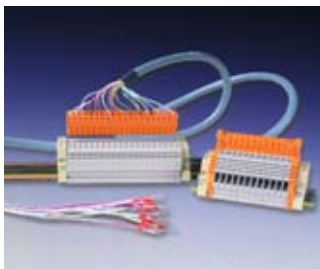
The latest addition to our ECOLINE family of switch-mode power supplies, these power supplies provide reliable, space-efficient solutions to drive higher-power demanding automation control panels.



WAVEcontrol Current-Monitoring Modules

### ■ WAVEcontrol Current-Monitoring Modules

WAVEcontrol modules identify differences and interruptions that occur in electrical circuits and help pinpoint specific measures to remedy these problems.



Universal PLC Interface

### ■ Universal PLC Interface

Only one part to order for all your PLC interface needs.



WTR 2.5/4, ZTL/ZTD, WTL 4&6

### ■ WTR 2.5/4, ZTL/ZTD, WTL 4 & 6

These innovative test terminals, with an accessible plug-in jumper channel, can only be found at Weidmuller. Used with a plug-in SIHA fuse holder, the WTR 4 quickly converts to a fuse terminal, providing two functions in one block.



SAI-M/SAI-F

### ■ SAI-M/SAI-F

Designed for passive system cabling, our Sensor-Actuator-Integrator (SAI) series uses finished cable assemblies and off-the-shelf M12 plug-in connectors, reducing installation and service costs.



Heavy Duty Connector Kits

### ■ Heavy Duty Connector Kits

These economical, prepackaged sets are under a single part number that includes hood, male and female insert and bulkhead housing.



Programming Ports

### ■ Programming Ports

Using industry standard rectangular connector housing, our programming ports allow power and data signals within control cabinets to be accessed from outside the cabinet.



AC Outlet Module with Ground Fault Interrupter

### ■ AC Outlet Module with Ground Fault Interrupter

For use in control cabinets as 120 VAC outlets for power tools, lights, test equipment, computers, etc.



WAVEPRO

■ **WAVEPRO**

Our WAVEPRO is the most flexible single-point signal conditioner family on the market today, offering configuration software that enables the user to change the signal conditioner ranges.



BL I/O 3.5

■ **BL I/O 3.5**

This pluggable field device connector is available with an integrated LED module, simplifying the system commissioning stage.



Insulated Screwdrivers

■ **Terminal Block Test Adapters and Insulated Screwdrivers**

Access signal indication and conduct maintenance checks without disturbing system operation.



WDU 2.5 to WDU 10

■ **WDU 2.5 to WDU 10**

Like many of our products, these terminal blocks have uniform profiles, reducing the number of accessories to order.



PS Test Plugs, Coding Keys, PCB Terminal Blocks with Test Points and Strain Relief Hoods

**ACCESSORIES**

■ **PS Test Plugs** make it possible to attach test equipment to monitor your system.

■ **Coding Keys** are used to prevent mismatching when mating plugs and headers.

■ **Test Points** are built into a selection of our single-level PCB terminal blocks.

■ **Strain Relief Hoods** reduce strain and channel and organize wires.

■ **Lock-Out Devices** lock plugs and headers together for added security.

**PRINTED CIRCUIT BOARD PRODUCTS**

■ **A Variety of Pluggable PCB Connectors**

We offer board-to-board, wire-to-board, wire-to-wire, rail-mount and through-panel PCB connectors — expanding your options when configuring your system.



PCB Connectors



BLIDC 3.5/BLIDC B 3.5

■ **BLIDC 3.5/BLIDC B 3.5**

The IDC plug has a removable contact that makes it easy to correct wiring mistakes.

More products are available than shown.  
Please contact us or visit our website: [www.weidmuller.com](http://www.weidmuller.com).

# WIRING SOLUTIONS THAT REDUCE CONTROL SYSTEM INSTALLATION TIME

Weidmuller's wiring solutions reduce installation time in a dozen different ways, enabling you to complete your application in record time.



PLC Interface

## RAIL/PANEL PRODUCTS

### ■ PLC Interface

For wiring in less than five seconds.

### ■ I-Series Terminal Blocks

Designed to reduce connection times by as much as 60%, making your wiring solutions faster, easier and more cost-effective.

### ■ PLUGSERIES

This family of pluggable relays features mounting and dismounting clamps that offer quick, reliable connection and disconnection for simple installation and maintenance.

### ■ ZQV 16/10, ZQV 35/10, ZQV 35/16

Each cross-connection has been designed to ensure that only the correct terminal combination can be plugged, eliminating errors.



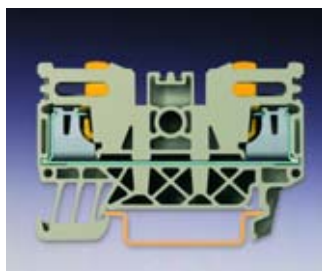
Heavy Duty Connectors

### ■ Heavy Duty Connectors

These quick connect and disconnect products accelerate installation.

### ■ Z-Series Terminal Blocks

These terminal blocks are designed with tension clamp technology, requiring no special wire preparation, for a quick and easy termination.



I-Series Terminal Blocks



Z-Series Terminal Blocks



PLUGSERIES



ZQV 16/10, ZQV 35/10, ZQV 35/16

## DESIGN AND SPECIFYING SUPPORT

### ■ RailDesigner 2.3

True-to-detail product display and easy-to-use graphic interface make this new and improved, mistake-proof software a real time saver when planning and ordering terminal rails.





BLIDC 3.5/BLIDC B 3.5



SL-SMT 3.5



Custom-Marked PCB Connectors and Terminals



LMZF 5.08 Series

## PRINTED CIRCUIT BOARD PRODUCTS

### ■ BLIDC 3.5/BLIDC B 3.5

Connects cables in seconds due to an insulation displacement connection (IDC) clamping system that eliminates time-consuming and cost-intensive insulation stripping and screw down processes.

### ■ SL-SMT 3.5

Designed specifically for automated assembly of electronic modules, this PCB pin-header eliminates the need for manual handling and wave or hand soldering processes, cutting production time and costs by as much as 30%.

### ■ Custom-Marked PCB Connectors and Terminals

Our custom marking service is particularly efficient for large production runs.

### ■ LMZF 5.08 Series of PCB Terminals and BLZF/SLZF Series of PCB Connectors

Featuring tension clamp technology, these products greatly reduce wire termination time and require no special tools.



PrintJet Printer



Crimfix L



stripax® plus 2.5

## ACCESSORIES

### ■ PrintJet

The only one of its kind on the market today. With its specially engineered ink-fixing unit, this quick and easy printing system provides exceptional print quality and speed for industrial marking products.

### ■ Crimfix L

A new generation of electrical/pneumatic-driven machines designed for years of reliable service. Complete preparation, stripping, and crimping in one error-free operation. No die changing necessary—cycle completed in less than two seconds.

### ■ stripax® plus 2.5

This multifunctional cutting, stripping and crimping tool streamlines wire preparation with its automatic feed for ferrules—saving time and money.



# Relays

## Available in the following housing types:

### Terminal Block – for high rail density; standard terminal block

- 6...9.5 mm (0.24...0.37 in) thick
- Smallest single channel relay or optocoupler available
- Screw clamp or tension clamp
- Features positive wire termination, LED indication, low current and high voltage switching

### Enclosed – for applications that require more wiring space

- Fully enclosed package (EG Series)
- Features circuit diagram on top, LED power indicator and marked wire terminals
- Combi-foot for mounting on TS 32 or TS 35 DIN-Rail

### Enclosed Pluggable – WAVESERIES for applications that require high density and quick disconnection

- One to four channels per module
- Features circuit diagram on top lid, LED power indicators and marked wire terminals
- TS 35 DIN-Rail mountable
- Screw clamp or tension clamp

### Open Fixed – RS Series for applications that do not require fully enclosed module

- Combi-foot for mounting on TS 32 or TS 35 DIN-Rail
- Features LED power indication and marked wire terminals
- Non-removable relay or optocoupler for secure electrical connection

### Open Pluggable – RS Series is also available with sockets and pluggable relays and optocouplers

- Relay or optocoupler can be removed for field replacement

### Socket – for applications that require additional flexibility in product application

- Allows for the separate selection of relay or optocoupler from the DIN-Rail mounted socket

#### MAXIMUM CURRENT:

Relay	16 A
Opto	4 A

#### MAXIMUM VOLTAGE:

Relay	240 VAC/DC
Opto	240 VAC

Check complete catalog on our website for specific series, housing and application options.

## MCZ SERIES

- Small construction in 6 mm (0.24 in) housing
- Simple and quick wire connection via tension clamp technology
- Simple connection area layout
- Pluggable cross-connections so that multiple modules can be jumpered together to reduce wiring

Description	Part No.	Description	Part No.
MCZ O 24 VAC/DC 2A (Optocoupler)	8287730000	MCZ O 120 VAC/DC (Optocoupler)	8421060000
MCZ R 24 VDC (Relay)	8365980000	MCZ R 120 VAC (Relay)	8420880000
ZQV 4/2 (Jumper 2-pole)	1608950000	AP MCZ 1.5 (End Plate)	8389030000
ZQV 4/3 (Jumper 3-pole)	1608960000		

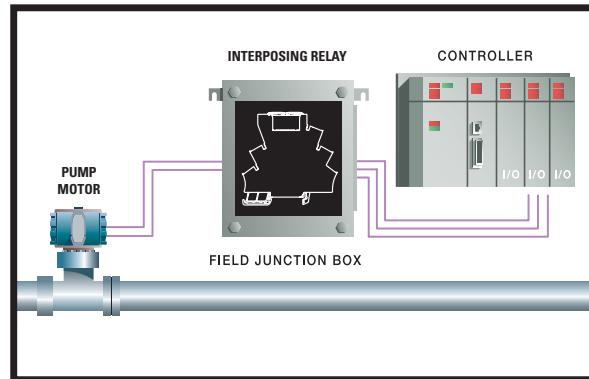


### MICRO SERIES

- Features pluggable relays
- Compact design — 6.1 mm (0.24 in)
- Pluggable cross-connections at inputs and outputs to minimize wiring
- Uses standard pluggable ZQV 4N jumpers
- Choice of screw clamp or tension clamp
- Innovative release lever for easy maintenance



Description	Part No.
MRS 24 VDC 1 CO (SPDT)	8533640000
MRZ 24 VDC 1 CO (SPDT)	8533660000
MRS 230 VAC 1 CO (SPDT)	8556020000
MRS 120 VAC/DC 1 CO (SPDT)	8556030000
MRZ 230 VAC 1 CO (SPDT)	8556090000
MRZ 120 VAC/DC 1 CO (SPDT)	8556100000
ZQV 4 N/2 SW (Jumper 2-pole black)	1793970000
ZQV 4 N/2 RT (Jumper 2-pole red)	1793950000

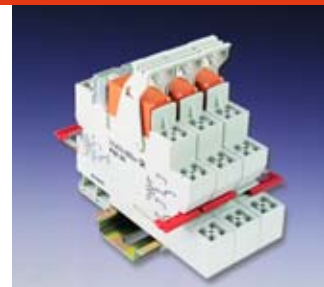


### APPLICATION

Analog Input: Conversion/Isolation

### PLUGSERIES RELAYS

- Designed to shorten maintenance and mounting times for industrial automation applications
- Easy plug-in standard relays
- Modular design to shorten installation time
- Choice of screw clamp or tension clamp
- Robust locking/release lever assures relay retention and speedy removal
- One or two changeover contacts (SPDT, DPDT)
- Jumpering capability for common coil connections or contacts between relay modules
- Plug-in free-wheeling diode with LED indicator included with complete modules



Description	Part No.	Description	Part No.
PRS 24 VDC LD 1 CO (SPDT)	8530621001	PRZ 120 VAC LD 2 CO (DPDT)	8530720000
PRS 24 VDC LD 2 CO (DPDT)	8530631001	PRS 230 VAC LD 1 CO (SPDT)	8530671001
PRZ 24 VDC LD 1 CO (SPDT)	8530691001	PRS 230 VAC LD 2 CO (DPDT)	8530681001
PRZ 24 VDC LD 2 CO (DPDT)	8530701001	PRZ 230 VAC LD 1 CO (SPDT)	8530731001
PRS 120 VAC LD 1 CO (SPDT)	8530641001	PRZ 230 VAC LD 2 CO (DPDT)	8530741001
PRS 120 VAC LD 2 CO (DPDT)	8530661001	ZQV 2.5 N/4-2 SW (Jumper 2-pole black)	1784270000
PRZ 120 VAC LD 1 CO (SPDT)	8530710000	ZQV 2.5 N/4-2 RT (Jumper 2-pole red)	1784280000

More products are available than shown.  
Please contact us or visit our website: [www.weidmuller.com](http://www.weidmuller.com).



# Signal Conditioners and Monitoring Modules

## Available in the following housing types:

### Terminal Block – for high rail density; standard terminal block

- 6...12 mm (0.24...0.47 in) thick
- Smallest single channel analog modules available
- Screw clamp or tension clamp
- Features positive wire termination, LED indication, low current and high voltage switching, and different circuit isolation methods

### Enclosed Pluggable – WAVESERIES for applications that require high density and quick disconnection

- Features circuit diagram on top lid, LED power indicators and marked wire terminals

- TS 35 DIN-Rail mountable
- 12.5 mm (0.49 in) or 17.5 mm (0.69 in) wide
- Screw clamp or tension clamp

### Input Signal Types/Ranges

#### Current:

- 4...20 mA, standard
- 0...20 mA, standard
- up to 100 mA, bipolar

#### Voltage:

- 0...10 V
- -10...+10 V
- up to 200 VDC

#### Frequency:

- 0...10 kHz

#### RTD

- -200...+850°C

#### Thermocouple:

- -200...+1820°C

### Output Signal Types/Ranges

#### Current:

- 4...20 mA
- 0...20 mA
- any portion of 0...20 mA

#### Voltage:

- 0...10 V
- -10...+10 V
- any portion of  $\pm 10$  V

#### Frequency:

- 0...10 kHz
- 0...16 kHz

Check complete catalog on our website for specific series, housing and application options.

## MCZ SERIES

- Digital and analog signal conditioning in a terminal block housing
- Small construction in 6 mm (0.24 in) housing
- Simple and quick wire connection via tension clamp technology
- Simple connection area layout for reduced installation time
- Quick and easy replacement for service and maintenance
- Pluggable cross-connections so that multiple modules can be jumpered together to reduce wiring



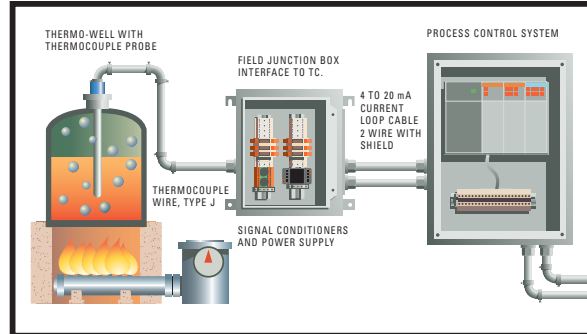
Description	Part No.
MCZ SC 0.5...20 mA input threshold monitor	8227350000
MCZ SC 0...10 V input threshold monitor	8260280000
MCZ VFC 0...10 V input/ freq out	8461470000
MCZ VFC 4...20 mA input (loop powered)/freq out	8461490000
MCZ TO (Time Off Delay) 50 ms	8324590000
ZQV 4/2 (Jumper 2-pole)	1608950000
ZQV 4/3 (Jumper 3-pole)	1608960000
AP MCZ 1.5 (End Plate)	8389030000

## WAVESERIES

- Screw clamp or tension clamp via pluggable terminal connectors
- Replacement without tools
- Quick power-up with pluggable circuit board
- Minimum wiring with available cross-connections
- Jumpering of power and ground connections to adjacent modules available
- Small foot print of only 0.5...0.7" of rail space
- 3-port isolation



Description	Part No.
WTS4 THERMO SELECT	8432300000
WAS5 CCC LP, 0(4)...20 mA / 0(4)...20 mA	8444950000
WAS5 PRO RTD	8560700000
WAS5 PRO Thermo	8560720000
WAS4 PRO DC/DC	8560740000
WAS5 CVC HF, 4...20 mA / 0...10 V, 20 kHz	8447280000
WAS5 VCC HF, 0...10 V / 4...20 mA, 20 kHz	8447340000
WAS5 CCC, 0(4)...20 mA / 0(4)...20 mA, 3-port isolation	8540180000
WAS5 CVC 4...20 mA / 0...10 V, 3-port isolation	8540230000
WAS5 VCC 0...10 V / 4...20 mA, 3-port isolation	8540290000
WAZ5 CCC, 0...20 mA / 4...20 mA, 3-port isolation	8540260000
ZQV 2.5 N/2 (Jumper 2-pole black)	1718080000
ZQV 2.5 N/2 (Jumper 2-pole red)	1717900000



### APPLICATION

Signal Monitoring

## WAVECONTROL CURRENT MONITORING MODULES

- Screw clamp or tension clamp connections via pluggable terminals for maximum wiring flexibility
- Ability to use pluggable cross-connectors
- Pluggable printed circuit board
- TRMS (True Root Mean Square) transformer for current measurements of non-sinusoidal signals available
- Flashing LED for error indication
- Module replacement without use of tools
- Switching of measurement range without calibration
- Potential-free current measurements up to 60 A



Description	Part No.
WAS2 CMR 1/5/10 A AC, Relay Output	8516560000
WAS2 CMR 20/40/60 A AC, Relay Output	8513340000
WAS1 CMA 1/5/10 A AC, Analog Output	8523400000
WAS1 LP CMA 1/5/10 A AC, Analog Output, Loop Powered	8528650000
WAS2 CMA 5/10 A AC/DC, Analog Output	8526610000
WAS2 CMA 20/25/30 A AC/DC, Analog Output	8545830000
WAS2 CMA 40/50/50 A AC/DC, Analog Output	8513330000
ZQV 2.5 N/2 (Jumper 2-pole black)	1718080000
ZQV 2.5 N/2 (Jumper 2-pole red)	1717900000

More products are available than shown.

Please contact us or visit our website: [www.weidmuller.com](http://www.weidmuller.com).





# Power Delivery Solutions

## Our Power Delivery Solutions include:

- Power Supplies
- Diode Modules
- Electronic Fuses

## This full range of ECOLINE products features:

- Adjustable output voltage (24-28) V DC
- Front-panel LED status indicator
- Extensive burn-in tested product @ 100% load before shipment for all units
- Overload with electronic current limiting, over-voltage, and over-temperature protection
- Built-in Power Factor Correction (PFC) providing correction greater than 0.7
- Fully enclosed, rugged, and space-efficient metal casing
- Approvals include cULus 508 Listed, EN 60950, and CE Mark
- Complete power delivery solution with WaveGuard Electronic fuses and Diode modules

### SINGLE-PHASE INPUT

#### CP-SNT 500W

- Space-efficient design (125.2 x 227.5 x 100) mm, 2 Kg allows installation in smaller locations
- Delivers up to 20 Amps of regulated output current at 24 Volts DC

Description	Output	Current	Part No.
CP-SNT 500W	24 VDC	20 A	8778870000



### SINGLE-PHASE INPUT

#### CP-SNT 250W

- Requires only (125.5 x 125.2 x 100) mm of DIN-Rail space
- Delivers up to 10 Amps of regulated output current at 24 Volts D

Description	Output	Current	Part No.
CP-SNT 250W	24 VDC	10 A	8708680000



### SINGLE-PHASE INPUT

#### CP-SNT 120W

- Compact size (65.5 x 125.2 x 100) mm
- Delivers up to 5 Amps of regulated output current at 24 Volts DC

Description	Output	Current	Part No.
CP-SNT 120W	24 VDC	5 A	8708670000



### SINGLE-PHASE INPUT

#### CP-SNT 70W

- Compact size (55.5 x 125.2 x 100) mm for installation in smaller locations
- Delivers up to 3 Amps of regulated output current at 24 Volts DC

Description	Output	Current	Part No.
CP-SNT 70W	24 VDC	3 A	8708660000



**THREE-PHASE INPUT**

**CP-SNT3 1000W**

- Compact size (125.2 x 240 x 100) mm, 2.5 Kg for placement in smaller locations
- Delivers up to 40 Amps of regulated output current at 24 Volts DC

Description	Output	Current	Part No.
CP-SNT3 1000W	24 VDC	40 A	<b>8708730000</b>



**THREE-PHASE INPUT**

**CP-SNT3 500W**

- Requires only 52 mm (2.05 in) of DIN-Rail space and is only 62.5 mm (2.46 in) tall
- Compact packaging easily accommodates new installations and retrofits to existing control cabinets

Description	Output	Current	Part No.
CP-SNT3 500W	24 VDC	20 A	<b>88708710000</b>



**THREE-PHASE INPUT**

**CP-SNT3 250W**

- Compact size (125.2 x 125.2 x 100) mm, 1.5 Kg allows installation in smaller locations
- Delivers up to 10 Amps of regulated output current at 24 Volts DC

Description	Output	Current	Part No.
CP-SNT3 250W	24 VDC	10 A	<b>8708700000</b>



**DIODE MODULES**

- Requires only 55.5 mm (2.19 in) of DIN-Rail space
- Enables parallel connectivity of two or more power supplies

Description	Output	Current	Part No.
CP DM 10	24 VDC	10 A	<b>8710620000</b>
CP DM 20	24 VDC	20 A	<b>8768650000</b>



**WAVEGUARD ELECTRONIC FUSES**

- Requires only 22.5 mm (0.88 in) of DIN-Rail space
- Suitable for all direct current applications

Description	Output	Current	Part No.	Description	Output	Current	Part No.
Screw Clamp				Tension Clamp			
WGS	24VDC	1.6A	<b>8618890000</b>	WGZ	24VDC	1.6A	<b>8621040000</b>
WGS	24VDC	3.15A	<b>8618910000</b>	WGZ	24VDC	3.15A	<b>8621030000</b>
WGS	24VDC	6.3A	<b>8618930000</b>	WGZ	24VDC	6.3A	<b>8621020000</b>
WGS	24VDC	8A	<b>8618940000</b>	WGZ	24VDC	8A	<b>8621010000</b>



More products are available than shown.  
Please contact us or visit our website: [www.weidmuller.com](http://www.weidmuller.com).



# Overvoltage Protection

**Weidmuller has a complete line of overvoltage protection devices to effectively stop the harmful effects of electrical overvoltage and electrical noise.**

There is strong potential for any of the wiring running throughout your production facility to pick up voltage surges, overloads and spikes due to power distribution, such as the common event of turning motors on and off. These surges, if not contained, can damage sensi-

tive control equipment, sometimes enough to stop production, costing you valuable time and money.

Our surge protection solutions use single- or multi-stage high voltage traps to stop the overvoltage conditions before they reach your control system electronics.

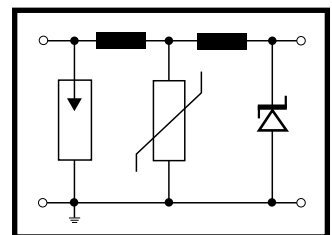
We designed our overvoltage protection products with standard control voltages as our guide, creating them with the capacity to monitor analog and digital signals, multi- and single-wire control, data communication lines and power distribution signals.

## SURGE PROTECTION

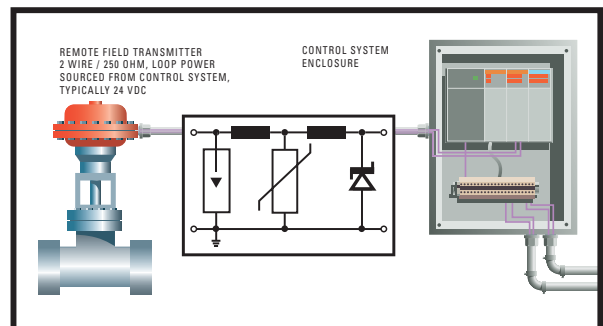
### MCZ OVP SERIES

- Features tension clamp, reducing installation of wires
- Functions with gas discharge tube, Varistor and suppression diode
- Quick response time of 10 - 100 ps
- Use for 0...20 mA current loops
- Direct contact with rail, TS 35

Description	Output Voltage	Current	Part No.
MCZ OVP CL	24 VDC	0.5 A	<b>8448920000</b>
MCZ OVP SL	24 VDC	0.5 A	<b>8448940000</b>
MCZ OVP CL	24 VAC	1.25 A	<b>8448960000</b>
MCZ OVP SL	24 VAC	1.25 A	<b>8448970000</b>
MCZ OVP CL	48 VAC/DC	0.5 A	<b>8449000000</b>
MCZ OVP SL	48 VAC/DC	0.5 A	<b>8449030000</b>
MCZ OVP CL	48 VAC/DC	1.25 A	<b>8449040000</b>
MCZ OVP SL	48 VAC/DC	1.25 A	<b>8449050000</b>
MCZ OVP CL	115 VAC/DC	1.25 A	<b>8449060000</b>
MCZ OVP SL	115 VAC/DC	1.25 A	<b>8449070000</b>
MCZ OVP CL	230 VAC/DC	1.25 A	<b>8449080000</b>
MCZ OVP SL	230 VAC/DC	1.25 A	<b>8449090000</b>
MCZ OVP CL	24 VAC	0.5 A	<b>8472880000</b>
MCZ OVP discharge tube type 90 V			<b>8449130000</b>
MCZ OVP Varistor 30 V			<b>8449140000</b>
MCZ OVP TAZ unipolar 24 V			<b>8449150000</b>
MCZ OVP TAZ bipolar 24 V			<b>8449160000</b>
ZQV 4/2 (Jumper 2-pole)			<b>1608950000</b>
ZQV 4/3 (Jumper 3-pole)			<b>1608960000</b>
AP MCZ 1.5 (End Plate)			<b>8389030000</b>



Multi-Stage Surge Protection



**APPLICATION:** Signal Circuit Overvoltage Protection

# Circuit Breakers

## CB 4200 SERIES

- Pushbutton style breaker
- UL-rated 1077 (supplementary protectors for use in electrical equipment)
- Available in single- and double-pole versions
- Direct contact with rail, TS 32 or TS 35
- Applicable current range: 0.10...16 A



## CB 2200 SERIES

- Lever style breaker
- UL-rated 1077 (supplementary protectors for use in electrical equipment)
- Available in single-, double- and three-pole versions
- Direct contact with rail, TS 32 or TS 35
- Applicable current range: 0.10...32 A

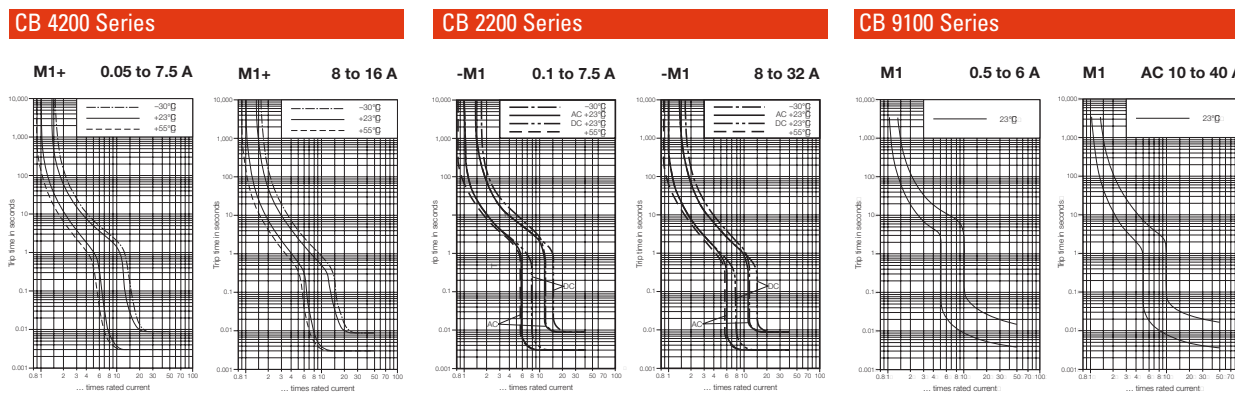


## CB 9100 SERIES

- Lever style breaker
- UL-rated 1077 (supplementary protectors for use in electrical equipment)
- Available in single-, double- and three-pole versions
- Direct contact with rail, TS 35
- Applicable current range: 0.5...63 A



## TRIP CURVES



More products are available than shown.  
Please contact us or visit our website: [www.weidmuller.com](http://www.weidmuller.com).



# Cable Interface Products

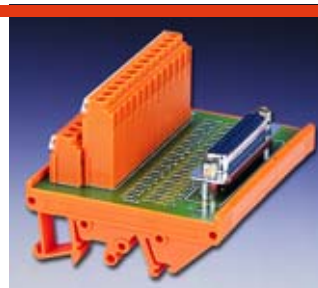
## STANDARD CABLE INTERFACE PRODUCTS

Weidmuller's multifaceted cable interface products are ideal for interfacing field wiring to high density cables. Designed for quick, simple and accurate plug-in installation, they:

- Accept most industry standard connector types
- Mount on industry standard DIN-Rails, providing an excellent complement to rail-mounted products such as programmable controllers
- Reduce the amount of DIN-Rail space normally required for field wiring termination
- Use double- and triple-level high-density terminals, saving space
- Require fewer wires to mark and dress
- Offer minimum installation error by connecting the field wiring to premarked printed circuit board terminal blocks that match the cable wiring

### D-SUBMINIATURE

- Mechanically polarized connector with a metal body and two rows of pins or sockets
- Assembled in standard UL recognized 70 mm (2.76 in) and high density 45 mm (1.77 in) width DIN-Rail housings
- Standard pin count: 9, 15, 25, 37 and 50



Description	Part No.	Description	Part No.
D-Sub (70 mm) UL recognized		D-Sub (45 mm)	
RD-9JS Male	<b>915935</b>	RD-9JS GRD Male	<b>8259010000</b>
RD-9JS Female	<b>915936</b>	RD-9JS GRD Female	<b>8216480000</b>
RD-15JS Male	<b>915941</b>	RD-15JS GRD Male	<b>8233350000</b>
RD-15JS Female	<b>915942</b>	RD-15JS GRD Female	<b>8209730000</b>
RD-25JS Male	<b>915949</b>	RD-25JS GRD Male	<b>8155650000</b>
RD-25JS Female	<b>915953</b>	RD-25JS GRD Female	<b>8155620000</b>
RD-37JS Male	<b>915956</b>	RD-37JS GRD Male	<b>8155660000</b>
RD-37JS Female	<b>915957</b>	RD-37JS GRD Female	<b>8155630000</b>
RD-50JS Male	<b>919656</b>	RD-50JS GRD Male	<b>8155670000</b>
RD-50JS Female	<b>919655</b>	RD-50JS GRD Female	<b>8155640000</b>

## ELCO

- High current rectangular plug connector with hermaphroditic contact design
- Connection mating and hold down accomplished with guide pins and one center mounted draw screw actuator
- Standard pin count: 20, 38 and 56, all UL recognized

Description	Part No.	Description	Part No.
RS-ELCO 38 M/L Male	<b>912126</b>	RS-ELCO 56 M/L Male	<b>912131</b>
RS-ELCO 38 M/L Female	<b>912128</b>	RS-ELCO 56 M/L Female	<b>912133</b>
RS-ELCO 38 M/R Male	<b>912127</b>	RS-ELCO 56 M/R Male	<b>912132</b>
RS-ELCO 38 M/R Female	<b>912129</b>	RS-ELCO 56 M/R Female	<b>912134</b>



## IDC RIBBON

- Designed with polarizing key for guiding and keying the socket connector
- Typical voltage and current: 125 VDC at 1 A
- Assembled in standard 70 mm and 45 mm width DIN-Rail housings
- Pin center dimension: 0.100 in
- Standard pin count: 10, 14, 16, 20, 26, 30, 34, 36, 40, 50, 60 and 64

Description	Part No.	Description	Part No.
IDC (70 mm) UL recognized		IDC (45 mm)	
RI-IDC 10	<b>915911</b>	RI-IDC 10	<b>8155610000</b>
RI-IDC 14	<b>915912</b>	RI-IDC 14	<b>8258980000</b>
RI-IDC 16	<b>915913</b>	RI-IDC 16	<b>8265540000</b>
RI-IDC 20	<b>915914</b>	RI-IDC 20	<b>8155600000</b>
RI-IDC 26	<b>915915</b>	RI-IDC 26	<b>8213470000</b>
RI-IDC 30	<b>915916</b>	RI-IDC 34	<b>8155590000</b>
RI-IDC 34	<b>915917</b>	RI-IDC 40	<b>8155580000</b>
RI-IDC 40	<b>915918</b>	RI-IDC 50	<b>8155570000</b>
RI-IDC 50	<b>915919</b>	RI-IDC 60	<b>8259000000</b>
RI-IDC 60	<b>915920</b>	RI-IDC 64	<b>8155550000</b>
RI-IDC 64	<b>915921</b>		





# Cable Interface Products

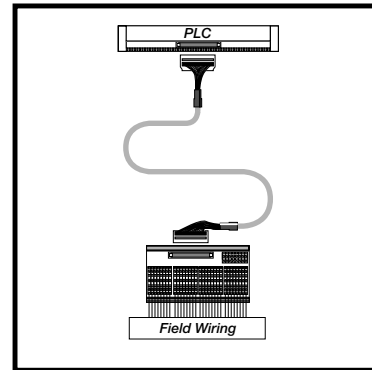
## PLC INTERFACE PRODUCTS

Weidmuller's flexible and efficient PLC Interface System, an alternative to traditional field wiring, is designed to decrease production costs by saving time and reducing wiring errors.

Easily connect Weidmuller's system to most major PLC module brands such as Allen-Bradley, GE Fanuc, Modicon, Siemens, Mitsubishi and Omron. Standard features include user-friendly premarked terminals and UL recognition.



Product	Description	Product	Description
Allen-Bradley	PLC-5	Siemens	95U
	SLC-500		100U
	ControlLogix		115U
	MicroLogix		135U
GE Fanuc	Series 90-30		57/300
	Series 90-70		57/400
	Versamax	Mitsubishi	A1 S/32
Modicon	Momentum PLC		FX2
	Quantum PLC	Omron	C200H
	Premium PLC		C500H
	Micro PLC		
	Nano PLC		
	Compact PLC		



## NEW PRODUCT

### UNIVERSAL PLC INTERFACE

Weidmuller has designed the new Universal PLC Interface, an innovative one-part-number solution that reduces your inventory and investment costs. All the components—interface module, cable and wiring are universal and can be used to connect most any PLC and field module. Available in screw clamp or tension clamp termination.



Description	Terminal Block	Part No.
QuickBloc PLC WDU-8 with Cable	Screw Terminals	<b>67601545</b>
QuickBloc PLC WDU-16 with Cable	Screw Terminals	<b>67601547</b>
QuickBloc PLC ZKS-8 with Cable	Tension Clamp	<b>67601549</b>
QuickBloc PLC ZKS-16 with Cable	Tension Clamp	<b>67601550</b>



# Cable Interface Products

## CUSTOM SOLUTIONS

**Weidmuller offers custom design, engineering and assembly services—solutions that ensure you have the right product at the right time for your application.**

Partnering with our expert knowledge and experience allows your engineers to concentrate their time, energy and resources on maintaining your application goals.

Partner with Weidmuller for custom products when:

- Reduction of panel space requires condensed functionality
- Standard products do not meet your unique application need
- You need an expert designer to offer innovative solutions
- You need a truly inventive product to place you ahead of the competition
- Market pressures dictate a rapid turnaround on a custom product design

### WEIDMULLER OFFERS...

#### unmatched expertise and products

- Over 60 years of unparalleled innovative product design and manufacturing knowledge and experience
- Universal understanding of applications and approvals enabling us to develop solutions for customers worldwide
- Experienced design team to pinpoint your exact specifications
- Expert and accessible technical support team
- The ability to flexibly accommodate specialty components from other manufacturers, if required by your application
- Quality assurance of our products, as an ISO 9001 inspection point

Our design and engineering services include:

- Controller front panel adapters
- DIN-Rail terminal blocks
- Controller interface products

Our custom assembly services include:

- Pre-assembled DIN-Rail modules
- Population of the backplane for enclosures
- Custom marking—plotter printing, wire and cable marking and equipment marking
- Kitting of parts you use routinely







# Cable Interface Products

## ACCESSORIES

### DIN-RAIL MOUNTED MAINTENANCE OUTLETS

- Utilized in cabinets as 120 VAC outlets for electrical equipment such as power tools, lights, test apparatus and computers
- Designed to make routine maintenance and system upgrades faster and simpler

Two versions are available:

- A single outlet with feed-through terminals for the AC power (the 120 V enters the module, powers the outlet and is available on a separate group of terminals for powering other devices)
- A duplex version

#### FEATURES:

- TS 32 and TS 35 DIN-Rail mounted
- Power outlet 15 A
- UL and CSA approved



Description	Part No.	Description	Part No.
RS Simplex 120 V Single Outlet	<b>9915480000</b>	RS Duplex 120 V Dual Outlet	<b>9915490000</b>

### NEW! AC OUTLET MODULES WITH GROUND FAULT INTERRUPTER

- For use within cabinets as 120 VAC outlets for power tools, lights, test equipment, computers, etc.
- Duplex GFI, 15A or 20A available
- Mount on 35mm DIN rail or can be direct mounted using an optional mounting kit
- CSA and UL approved



Description	Part No.
AC Outlet Module w/ GFI	<b>7940000036</b>



# SAI Products

## SENSOR-ACTUATOR-INTEGRATOR (SAI) SERIES

- Industrial automation products (junction boxes) designed to be installed directly into your machine application
- Choice of metal or plastic housing—protects from high heat, corrosion, dust and water submersion
- Complete sets—pluggable cable hood or fixed cable—with no extra parts to buy or stock
- Product line contains LED status indication
- Totally sealed with epoxy-encapsulated environmental protection—IP 67/68 (NEMA 6/6P)
- Available in 4, 6 or 8 ports and 3, 4 or 5 pin M12 or Harax® connectors
- Designed with M12, M8 and EMC-compliant screw connections
- Eliminates time and cost intensive installations
- Saves on material costs and space



## SAI-MMS

- Metal housing provides continuous shielding of connections from sensors to control side
- The only fully shielded junction box on the market with M12 EMC-compliant screw connections and 4- and 5-pin configurations
- Pluggable hood with EMC-compliant cable glands for pre-assembling homerun cable
- Designed for use in high heat and harsh environments
- UL and CSA approval



Poles	Description	Part No.	Poles	Description	Part No.
4	SAI-4 MMS 4P M12	<b>1783540000</b>	5	SAI-4 MMS 5P M12	<b>1783520000</b>
4	SAI-8 MMS 4P M12	<b>1783530000</b>	5	SAI-8 MMS 5P M12	<b>1783510000</b>

## SAI-MHD

- Plastic base and metal hood
- For standard trunk cables and choice of homerun cable entry
- Allows for utilization of larger diameter cables
- For cables with outside insulation diameter from 13 mm (0.51 in)...18 mm (0.71 in)
- Accommodates 90° or 180° homerun cable connection
- UL and CSA approval



Poles	Description	Part No.	Poles	Description	Part No.
4	SAI-4 MHD 4P M12	<b>1705923000</b>	5	SAI-4 MHD 5P M12	<b>1701233000</b>
4	SAI-8 MHD 4P M12	<b>1705943000</b>	5	SAI-8 MHD 5P M12	<b>1701253000</b>

More products are available than shown.  
Please contact us or visit our website: [www.weidmuller.com](http://www.weidmuller.com).

## SAI-M MICRO CONNECTOR

- Pluggable disconnect module, providing high application flexibility
- M12 micro connectors
- Reconfigurable micro cordsets minimize installation time and wiring errors
- Choice of pluggable potential isolation with simple jumper change
- 4-pole version with 1 signal per port
- 5-pole version with 2 signals per port
- Standard plug-in and pin layout
- Protection class: IP 68 (NEMA 6P)
- UL and CSA approval



Poles	Description	Part No.	Poles	Description	Part No.
4	SAI-4-M 4P M12	<b>1705920000</b>	3	SAI-4-M 3P IDC	<b>1760040000</b>
4	SAI-8-M 4P M12	<b>1705940000</b>	3	SAI-8-M 3P IDC	<b>1760060000</b>
5	SAI-4-M 5P M12	<b>1701230000</b>	4	SAI-4-M 4P IDC	<b>1766780000</b>
5	SAI-8-M 5P M12	<b>1701250000</b>	4	SAI-8-M 4P IDC	<b>1766800000</b>

## SAI-F MICRO CONNECTOR

- Pre-wired (fixed) homerun cable minimizes inventory expense and connection errors
- C-Track compatible polyurethane homerun cable
- Homerun cables available in 5, 10, 15 and 20 meter lengths
- M12 micro connectors
- Micro cordsets minimize installation time and wiring errors
- 4-pole version with 1 signal per port
- 5-pole version with 2 signals per port
- Standard plug-in and pin layout
- Protection class: IP 68 (NEMA 6P)
- UL and CSA approval



Poles	Description	Part No.	Poles	Description	Part No.
4	SAI-4-F 4P PUR 5M	<b>9456190000</b>	5	SAI-4-F 5P PUR 5M	<b>9456330000</b>
4	SAI-4-F 4P PUR 20M	<b>9456230000</b>	5	SAI-4-F 5P PUR 20M	<b>9456370000</b>
4	SAI-8-F 4P PUR 5M	<b>9456750000</b>	5	SAI-8-F 5P PUR 5M	<b>9456890000</b>
4	SAI-8-F 4P PUR 20M	<b>9456790000</b>	5	SAI-8-F 5P PUR 20M	<b>9456930000</b>

## SAI SERIES ACCESSORIES

Weidmuller offers a wide range of accessories:

- M12 micro extension cordsets 0.3 m...10.0 m
- M12 micro dust cap/marking
- Field attachable connectors
- Custom homerun cables available on request



## PROGRAMMING PORT

- Heavy duty connector system for power and data
- Allows inside of control cabinets to be accessed from the outside without powering down
- Designed with industry standard rectangular connector housings made from die-cast aluminum
- Protection class: IP 65



Description	Part No.	Description	Part No.
PROPORT AC PLUG +9 PIN DSUB	<b>9909020000</b>	PROPORT 9-PIN DSUB AC	<b>9910560000</b>
PROPORT AC PLUG +15 PIN DSUB	<b>9909030000</b>	PROPORT AC +9PIN DSUB	<b>9910670000</b>
PROPORT AC PLUG +25 PIN DSUB	<b>9909040000</b>	PROPORT 1 X RJ45	<b>9916030000</b>
PROPORT 8-PIN RJ45 AC	<b>9910550000</b>	PROPORT AC +5A CIRCUIT BREAK	<b>9916200000</b>



# DIN-Rail Terminal Blocks

## W-SERIES

- Screw clamp termination
- Requires no special wire preparation
- High contact force and self-locking clamp
- Wire size range from 26 AWG...250 MCM
- Current load range from 10...225 A
- Voltage range from 300...600 V
- Standard blocks made of beige Wemid
- Available options include a range of colors and material, blown fuse indication (LED) and diodes



## SINGLE-LEVEL FEED THROUGH

Description	Part No.	Description	Part No.
WDU 2.5N	1040800000	WDU 6	1020200000
WDU 2.5	1020000000	WDU 10	1020300000
WDU 4	1020100000	WDU 16	1020400000

## DUAL-LEVEL FEED THROUGH

WDK 2.5 N	1041600000	WDK 4 N	1041900000
-----------	------------	---------	------------

## BRANCH

WDK 2.5 V	1022300000	WDK 2.5 LD with LED (6 VDC)	9119970000
WDK 4 NV	1041910000	WDK 2.5 D with Diode	8025610000

## DISCONNECTS

WTR 2.5	1011100000	WTR 2.5 with stb	1011200000
---------	------------	------------------	------------

## FUSE

Single-level WSI 6	1011000000	Single-level WSI 6/2 24 VDC/60 VAC	1014200000
Single-level WSI 6 24 VDC/60 VAC	1012200000	Single-level WSI 6/2 48 VDC/120 VAC	1014300000
Single-level WSI 6 48 VDC/120 VAC	1012300000	Fuse/Feed Through KDKS 1/35	9503310000
Single-level WSI 6/2	1014000000		

## GROUND

WPE 2.5	1010000000	WPE 6	1010200000
WDK 2.5 PE	1036300000	WPE 10	1010300000
WPE 4	1010100000		



Single-level Feed Through



Disconnects



Dual-level Feed Through



Fuse



Branch



Ground

## MICRO SERIES — TS 15 DIN-RAIL MOUNTABLE

- 87 points per foot of rail
- Pluggable ZQV jumpers
- 300 V, 15 A, 26...14 AWG

Description	Part No.	Description	Part No.
WDU 1.5/R3.5/15	1753280000	WDK 1.5/R3.5/15	1753290000

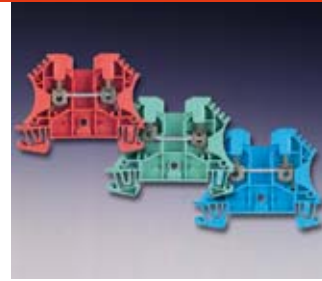


## WDU 2.5 COLOR TERMINAL BLOCKS

Weidmuller offers color terminal blocks for quick identification

	WDU 2.5 N screw jumpers	WDU 2.5 N ZQV pluggable jumpers	WDU 2.5 plug or screw jumpers	WDU2.5N 600 V UL
Beige Wemid	<b>1023700000</b>	<b>1040800000*</b>	<b>1020000000</b>	<b>1730940000</b>
Blue Wemid	<b>1023748000</b>		<b>1020080000</b>	
Orange Wemid	<b>1023760000</b>		<b>1020060000</b>	
Red PA			<b>1020040000</b>	
Yellow Wemid			<b>1020020000</b>	
Green Wemid			<b>1020090000</b>	
Violet PA			<b>1037700000</b>	
Brown Wemid			<b>1037710000</b>	
Gray Wemid			<b>1037720000</b>	
White Wemid			<b>1036800000</b>	
Black Wemid			<b>1020010000</b>	
Beige Wemid (ATEX)	<b>1752140000</b>		<b>1752170000</b>	
Blue Wemid (ATEX)	<b>1752150000</b>		<b>1752180000</b>	

\*Pluggable jumpers must be ordered separately.



## WDU 2.5/TC

- Use in temperature measuring circuits
- Same insulation materials as standard terminal blocks
- Special thermocouple markings according to ANSI standards

Description	Type	Technical Data		Part No.
		Busbar	ID#*	
WDU 2.5/TC	K		● Chromel 1	<b>1024100000</b>
		● Alumel 2		
WDU 2.5/TC	T		● Copper 5	<b>1024200000</b>
		● Constantan 4		
WDU 2.5/TC	J		● Iron 3	<b>1024300000</b>
		● Constantan 4		
WDU 2.5/TC	S		● E-copper 5	<b>1024400000</b>
		● A-copper 6		
WDU 2.5/TC	B		● S-copper 7	<b>1033700000</b>
		● E-copper 5		
WDU 2.5/TC	E		● Chromel 1	<b>1033300000</b>
		● Constantan 4		

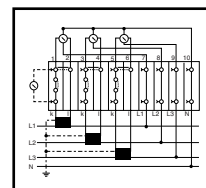
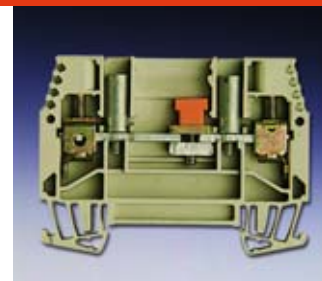
\*ID# is stamped into current bar.



## SLIDE-LINK DISCONNECTS

- Superior solution for simple current transformer circuits and measurement transformer test sets
- WTL 4 provides a lateral slide link disconnect with additional short circuit capability
- WTL 6/2 and 6/3 include short circuit jumper
- Connections for test equipment are integral parts of housing

Type	Description	Part No.
WTL 4	Test disconnect terminal without StB socket	<b>1754970000</b>
WTL 4	Test disconnect terminal with StB socket	<b>1754960000</b>
WTL 6/1	Lateral disconnect with StB socket	<b>1016900000</b>
WTL 6/1	Lateral disconnect without StB socket	<b>1016700000</b>
WTL 6/2	Test plugs accept open type male leads	<b>1017700000</b>
WTL 6/3	Test plugs accept sheathed male leads	<b>1018600000</b>



More products are available than shown.  
Please contact us or visit our website: [www.weidmuller.com](http://www.weidmuller.com).

### DUAL-LEVEL/BRANCH TERMINALS

- Double-level feed through
- Compact design
- Pluggable jumpers
- Rated at 600 V, 27 A, 22...10 AWG

Description	Part No.	Description	Part No.
WDK 2.5N	<b>104160000</b>	WDK 4N	<b>104190000</b>
WDK 2.5NV	<b>104161000</b>	WDK 4NV	<b>104191000</b>



### DISCONNECT/FUSE TERMINALS

- Features built-in cross-connection
- Quickly converts to fuse terminal using SIHA fuse holder
- Rated at 600 V, 16 A, 22...10 AWG

Description	Part No.	Description	Part No.
WTR 2.5	<b>101110000</b>	WTR 4	<b>791018000</b>
WTR 2.5/SI	<b>176394000</b>	WTR 4/SI	<b>791024000</b>

LED version also available. Call Weidmuller for details.

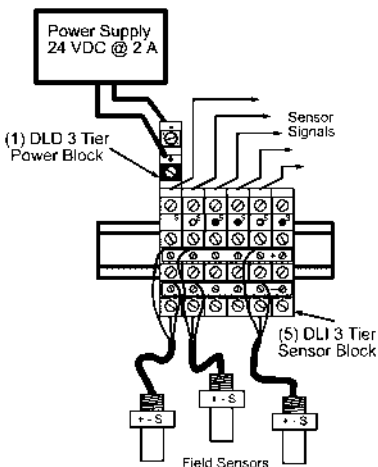


### PRODUCT UPGRADES

#### MULTI-TIER TERMINALS

The following products are now made of Wemid molding material. Wemid withstands a continuous operating temperature of 248°F and has earned the highest possible flammability rating in its class: UL 94 V-0 (non-burning).

Type	Description	Part No.
DLD, DLI	Multiple-level sensor terminal blocks	<b>1783790000/1783820000</b>
MAK 2.5	Triple-level terminal block with ground	<b>7917030000</b>
KDKS 1	Fuse with feed-through terminal block	<b>9532440000</b>



Example: Three Sensor Hook-up Diagram



# DIN-Rail Terminal Blocks

## Z-SERIES

- Tension clamp termination
- Requires no special wire preparation
- High contact force and proven clamping yoke system
- Wire size range from 26...2 AWG
- Current load range from 10...115 A
- Voltage range from 300...600 V
- Standard blocks made of beige Wemid
- Available options include a range of colors and material, blown fuse indication (LED) and diodes



### SINGLE-LEVEL FEED THROUGH

Description	Part No.	Description	Part No.
ZDU 2.5	1608510000	ZDU 6	1608620000
ZDU 4	1632050000	ZDU 10	1746750000

### MULTI-LEVEL FEED THROUGH

ZDK 2.5	1674300000	ZMAK	1768000000
---------	------------	------	------------

### BRANCH

ZDK 2.5/1.5V	1689990000		
--------------	------------	--	--

### DISCONNECT

ZTR 2.5	1608680000	ZDTR 2.5	1745400000
---------	------------	----------	------------

### SINGLE-LEVEL FUSE

ZSI 2.5	1616400000	ZSI 2.5/2	1616460000
ZSI 2.5/LD 60 VAC	1616430000		

### GROUND

ZPE 2.5	1608640000	ZPE 4	1632080000
ZPE 2.5/3AN	7904180000	ZPE 6	1608670000



Single-Level Feed Through



Disconnect



Multi-Level Feed Through



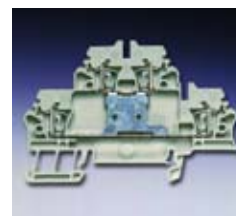
Single-Level Fuse



Branch



Ground



Branch

More products are available than shown.  
Please contact us or visit our website: [www.weidmuller.com](http://www.weidmuller.com).



### FEED THROUGH TERMINAL BLOCKS

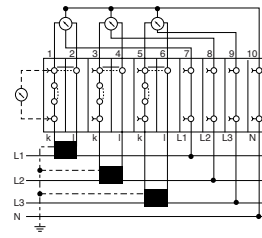
- Slimmest terminal block available
- Only 3.5 mm wide – takes up 42% less space on TS 35 DIN-Rail
- 86 Termination points per foot of rail
- 2 jumpering channels per terminal
- Rated for: 300 V, 10 A, 28...16 AWG

Description	Part No.	Description	Part No.
ZDU 1.5	<b>1775480000</b>	ZDU 1.5/4AN	<b>1775580000</b>
ZDU 1.5/3AN	<b>1775530000</b>		



### DISCONNECT TERMINAL BLOCKS

- Pluggable jumpers with locking clip for quick circuit manipulation
- Ideal for current transformer circuits
- Produce optional test applications with a variety of termination methods
- Rated for 600 V, 33 A, 20...8 AWG



Description	Part No.	Description	Part No.
ZTL 6/STB	<b>1771800000</b>	ZTD 6	<b>1771810000</b>



### Z-ROOF FEED THROUGH TERMINAL BLOCKS

- Reduce space (width) requirements by 30%
- Pluggable Jumpers Acceptable
- Rated for 600 V, 20...65 A, 26...4 AWG

Description	Part No.	Description	Part No.
ZDU 2.5-2	<b>1772060000</b>	ZPE 2.5-2	<b>1706090000</b>
ZDU 4-2	<b>1770370000</b>	ZPE 4-2	<b>1770380000</b>



### PLUGGABLE TERMINALS

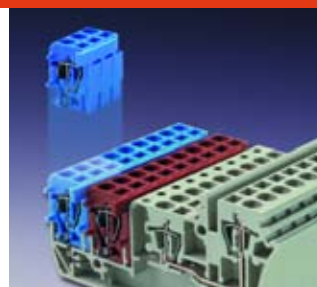
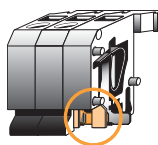
- Provides a pluggable header or connector for quick disconnects, testing or maintenance
- Allows for greater density with branch, dual, triple, or four level configurations
- Modular construction; plug-in connectors for 2-12 poles
- Base terminal and plug-in connector equipped with 2 connections and 2 cross-connection channels for greater wiring flexibility

Description	Part No.	Description	Part No.
ZKBD 2.5/1.5	<b>1688260000</b>	ZDKB	<b>1699600000</b>
ZKSD 2.5/1.5	<b>1697610000</b>	ZRV 1.5	<b>1698160000</b>
ZDKS	<b>1699610000</b>	ZKB 1.5	<b>1742620000</b>



## SENSOR TERMINAL BLOCKS

- Terminal block with pluggable mini-terminal
- Used to distribute power or provide a ground connection
- Quickly connect 3- or 4-wire sensors and actuator devices
- Base provides a feed-through connection for control signals
- Pluggable terminals have built-in bussing system for reduced installation time



Description	Part No.	Description	Part No.
ZIA 1.5/3L-1S 3-wire sensor	1651980000	ZIA 1.5/4L-PE 4-wire sensor w/ ground	1652030000
ZIA 1.5/4L-1S 4-wire sensor	1652010000	ZVL 1.5/20 mini-terminal, Brown	1650370000
ZIA 1.5/3L-PE 3-wire sensor w/ ground	1652000000	ZVL 1.5/20 mini-terminal, Blue	1650360000

## ZDU COLOR TERMINAL BLOCKS

Weidmuller offers color terminal blocks for quick identification

	ZDU 2.5 Single	ZDU 2.5/3AN Branch	ZDU 2.5/4AN Branch	ZDU 2.5/2x2AN Single/Dual	ZDU 2.5/2x2AN/D Single/Dual w/Diode	ZDU 2.5/2x2AN/LD Single/Dual w/LED
Beige Wemid +	1608510000	1608540000	1608570000	1608600000	1650340000	1692590000
Beige Wemid -					1650350000	1692600000
Blue Wemid	1608520000	1608550000	1608580000	1608610000		
Orange Wemid	1636780000	1636790000	1636800000	1636810000		
Red PA	1683260000	1683340000	1683420000			
Yellow Wemid	1683270000	1683350000	1683430000			
Green Wemid	1683280000	1683360000	1683440000	1683520000		
Violet PA	1683290000	1683370000	1683450000			
Brown Wemid	1683300000	1683380000	1683460000	1683540000		
Gray Wemid	1683310000	1683390000	1683470000	1683550000		
White Wemid	1683320000	1683400000	1683480000			
Black Wemid	1683330000	1683410000	1683490000			
10 Pole	1626950000	1626960000	1626970000			
Beige Wemid (ATEX)	1739370000	1739390000	1739410000	1739430000		
Blue Wemid (ATEX)	1739380000	1739400000	1739420000	1739440000		

\*Pluggable jumpers must be ordered separately.



## DIRECT MOUNT TERMINAL BLOCKS

- Tension clamp feed-through terminals
- Compact size designed for limited-space control panel applications
- Durable material for harsh environment
- Available as individual blocks or pre-assembled units of 2-12 poles

Description	Part No.	Description	Part No.
ZDUB 2.5-2/2AN/DM	1704350000	ZDUB 2.5-2/2AN/DB with mount tab	1704500000



## MICRO SERIES — TS 15 DIN-RAIL MOUNTABLE

- 60 points per foot of rail
- 300 V, 20 A, 26...12 AWG
- Pluggable ZQV jumpers

Description	Part No.
ZDUA 2.5-2/15	1720920000



More products are available than shown.  
Please contact us or visit our website: [www.weidmuller.com](http://www.weidmuller.com).



# DIN-Rail Terminal Blocks

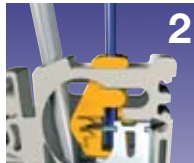
## I-SERIES

- Insulation displacement connection (IDC) termination
- Gas-tight and vibration proof (spring-powered insulation displacement clamp, only one of its kind)
- Eliminates the need for wire stripping
- Reduces conductor connection times as much as 60% compared to conventional screw termination
- Low contact resistance due to copper busbar with tin-lead plating
- Rated for: 300 V, 10 A, 24...14 AWG
- Standard blocks made of beige Wemid

### HOW TO: Termination Steps



Insert conductor into wire guide (1).



Insert screwdriver and depress wire guide by tilting screwdriver outwards (2).



Remove screwdriver, the conductor is secure (3).

### FEED THROUGH

Description	Part No.
IDU 1.5 N	<b>1792540000</b>
IDU 2.5 N	<b>1812900000</b>

### NEW! FEED THROUGH HYBRIDS

Description	Part No.
IDU 1.5N/ZB Screw/IDC	<b>1792730000</b>
IDU 1.5N/ZF Tension/IDC	<b>1792700000</b>
IDC 2.5N/ZB Screw/IDC	<b>1821290000</b>



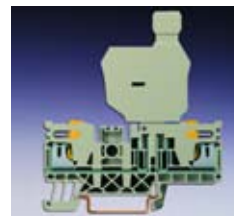
Feed Through



Disconnect

### DISCONNECT

Description	Part No.
ITR 1.5 N	<b>1792630000</b>
ITR 2.5 N	<b>1812990000</b>



Disconnect and Fuse



Ground

### DISCONNECT AND FUSE

Description	Part No.
ISI 1.5	<b>1792640000</b>
ISI 2.5 N	<b>1813010000</b>

### GROUND

Description	Part No.
IPE 1.5 N	<b>1792560000</b>
IPE 2.5 N	<b>1812920000</b>



Branch



Branch Hybrid

### NEW! BRANCH

Description	Part No.
IDU 1.5N/3AN	<b>1792570000</b>
IDU 1.5N/4AN	<b>1792600000</b>

### NEW! BRANCH HYBRIDS

Description	Part No.
IDU 2.5N/3AN/ZB	<b>1812930000</b>
IDU 2.5N/4AN/ZB	<b>1812960000</b>

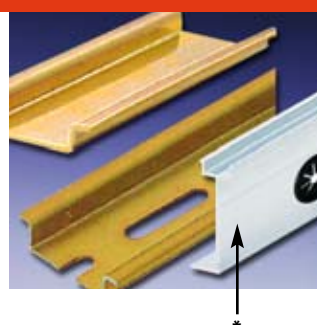


# DIN-Rail Accessories

## DIN-RAIL

- Available in steel, aluminum or copper
- Steel versions are electroplated and passivated with yellow di-chromate coating
- Available in solid or slotted versions (1 or 2 meter lengths)

Description	Part No.	Description	Part No.
TS 35 x 7.5 Slotted Steel 2 m	<b>51450</b>	TS 32 x 15 Solid Steel 2 m	<b>12280</b>
TS 35 x 7.5 Solid Steel 2 m	<b>38340</b>	TS 32 x 15 Slotted Steel 2 m	<b>51440</b>
TS 35 x 15 Solid Steel 2 m	<b>23640</b>	TS 35 x 7.5 Aluminum hi Rail 1 m	<b>999716</b>
TS 35 x 15 Slotted Steel 2 m	<b>23650</b>	TS 35 x 7.5 Aluminum hi Rail* 2 m	<b>999789</b>



## END PLATES

- Encloses open side of modular terminals

Description	Part No.	Description	Part No.
WAP/WDU 2.5 - 10	<b>1050000000</b>	ZAP/ZDU 4	<b>1632090000</b>
ZAP/ZDU 2.5	<b>1608740000</b>	ZAP/ZDU 6	<b>1608830000</b>



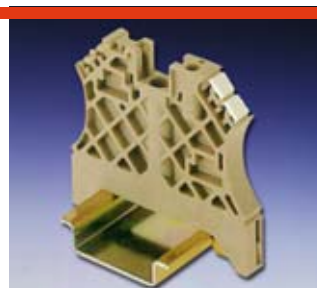
## END BRACKETS

- Prevents incorrect placement and ensures secure terminal positioning
- Designed to accept marking tags — can serve as group markings

Description	Part No.	Description	Part No.
WEW 35/2 for TS 35	<b>1061200000</b>	EWK 1/32 for TS 32	<b>206160000</b>
EW 35 for TS 35	<b>383560000</b>	ZEW 35 for TS 35	<b>954000000</b>

### NEW! TENSION END BRACKET

ZEW 15 for TS 15	<b>7920340000</b>
------------------	-------------------

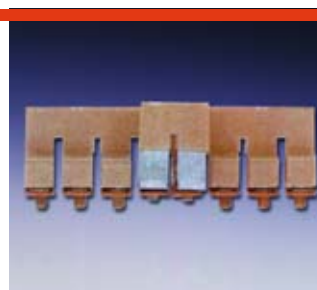


## JUMPERS

- 100% insulated

### WDU SERIES (SCREW)

Description	Part No.	Description	Part No.
WQV 2.5/2	<b>1053660000</b>	WQV 4/2	<b>1051960000</b>
WQV 2.5/3	<b>1053760000</b>	WQV 4/3	<b>1054560000</b>
WQV 2.5/10	<b>1054460000</b>	WQV 4/10	<b>1052060000</b>



## PLUGGABLE

- No tools required for installation

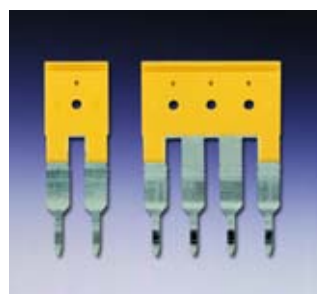
### ZDU SERIES (PLUGGABLE)

Description	Part No.	Description	Part No.
ZQV 2.5/2	<b>1608860000</b>	ZQV 4/2	<b>1608950000</b>
ZQV 2.5/3	<b>1608870000</b>	ZQV 4/3	<b>1608960000</b>
ZQV 2.5/4	<b>1608880000</b>	ZQV 4/4	<b>1608970000</b>
ZQV 2.5/10	<b>1608940000</b>	ZQV 4/10	<b>1609030000</b>

- Reduce installation time by 60%

### WDU SERIES (PLUGGABLE)

Description	Part No.	Description	Part No.
ZQV 2.5N/2	<b>1693800000</b>	ZQV 4N/2	<b>1758250000</b>
ZQV 2.5N/3	<b>1693810000</b>	ZQV 4N/3	<b>1762630000</b>
ZQV 2.5N/4	<b>1693820000</b>	ZQV 4N/4	<b>1762620000</b>
ZQV 2.5N/10	<b>1693880000</b>	ZQV 4N/10	<b>1758260000</b>



### NEW! STEP-DOWN JUMPERS

Description	Part No.
ZQV 35/16	<b>7920120000</b>
ZQV 35/10	<b>7920100000</b>
ZQV 16/10	<b>7920080000</b>

More products are available than shown.  
Please contact us or visit our website: [www.weidmuller.com](http://www.weidmuller.com).



## Protected Connectors



### HEAVY DUTY CONNECTORS

Weidmuller offers compact, quick-disconnect heavy-duty industrial connectors.

- DIN standard connectors for reliability and global acceptance
- Protecting numerous applications to IP 65 (NEMA 4P) in power plants, chemical plants, machine tools, trains and railway cars
- Accommodates a range of connections—up to 64 wires for sturdy turned contact pins, up to 280 wires for economical crimp contact pins
- Designed with heavy duty screw clamp inserts that feature vibration-proof termination—so strong ferrules are unnecessary
- Equipped with a wide range of durable hoods and housings that are:
  - Heat Resistant Thermoplastic

**OR**

- Standard Metal—zinc alloy cast or aluminum cast plating base material, both with a powder painted finish for knock and wear resistance

**OR**

- Corrosion-Protected—manufactured from cast aluminum with anodized surface to inhibit corrosion

Weidmuller has three different types of heavy-duty connectors to choose from, depending on the type of insert required for your application: Basic, Through Panel and Modular.

### BASIC CONNECTORS

- For connecting free standing cable assemblies
- Screw clamp or crimp contact termination
- Single male or female inserts, completely enclosed by the hood or housing

#### SELECTION OF BASIC CONNECTORS

- Determine the application requirements—wire and electrical requirements
- Determine the insert series and size—based on application and space constraints
- Select the male insert—available with either screw clamp or crimp contact termination
- Select the female insert—choose the female insert with same termination type as male insert
- Select the hood—choose the appropriate position of cable entry, locking of the levers or spigots and type of configuration
- Select the housing—either Bulkhead, Base or Couple Housing
- Select the appropriate accessories and tools—we offer a full range of products for your application, including dome plugs, fittings, reducers, spacers, covers, coding pins, jumpers, locking latches and adapter plates



### THROUGH-PANEL CONNECTORS

- Used to connect field wiring to control cabinets
- Screw clamp or crimp contact termination on hood side of connector
- Screw clamp on bulkhead housing (cabinet) side



### MODULAR CONNECTORS

- Allows for different sizes of wire and/or different types of wiring to be included in a single hood or housing
- Can accommodate signal and power wiring in the same connector
- System's flexibility lets you act on last minute configuration decisions—reducing development, inventory and order processing costs



#### MODULAR PRODUCT LINE:

##### CONCEPT SERIES—MODULAR CONNECTOR SYSTEM

- Select the combination of connectors (modules)—required for customized application or field configurable cable assemblies
- Insertion frames for 2, 3, 5 or 7 modules
- Features 6 pin and socket combinations with 3-20 poles
- Free choice of economical crimp connection or tension clamp connection technology for vibration-resistant, labor-saving installations

##### MODUFLEX C - MODULAR CONNECTOR SYSTEM

- Modular connectors with non-metal housing for an economical solution
- For indoor applications, IP 20 (NEMA 1)
- Can be mounted on terminal rails or secured on surfaces or wall entries
- Up to 5 coupling frames can be assembled in one block

### HEAVY DUTY CONNECTOR KITS

Weidmuller has made selecting and ordering the products you need simpler, faster and more economical with our Heavy Duty Connector Kits.

- Prepackaged sets come complete with male and female insert, bulkhead housing and hood
- Listed under one part number
- Kit price is less than the total price of these parts purchased separately



Description	Part No.	Description	Part No.
HDC-KIT-HE 06.100	<b>1712460000</b>	HDC-KIT-HE 10.111	<b>1712670000</b>
HDC-KIT-HE 10.110	<b>1712510000</b>	HDC-KIT-HE 16.121	<b>1712680000</b>
HDC-KIT-HE 16.120	<b>1712520000</b>	HDC-KIT-HE 24.131	<b>1712690000</b>
HDC-KIT-HE 24.130	<b>1712530000</b>	HDC-KIT-HE 06.200	<b>1712700000</b>
HDC-KIT-HE 32.140	<b>1712540000</b>	HDC-KIT-HE 10.210	<b>1712710000</b>
HDC-KIT-HE 48.150	<b>1712550000</b>	HDC-KIT-HE 16.220	<b>1712720000</b>
HDC-KIT-HE 06.101	<b>1712660000</b>	HDC-KIT-HE 24.230	<b>1712730000</b>

More products are available than shown.  
Please contact us or visit our website: [www.weidmuller.com](http://www.weidmuller.com).



# PCB Terminal Blocks

## Free Choice of:

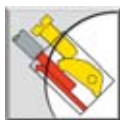
### TERMINATION STYLES



■ Screw Clamp



■ Tension Clamp



■ TOP Clamp



■ Leaf Spring



■ Push-on Tab Connection

### PITCHES (MM)

- 3.50
- 5.00
- 5.08
- 6.35
- 7.50
- 7.62
- 9.52
- 10.00
- 10.16
- 15.00

### CONFIGURATION

- Single-, as well as double- and triple-level for higher packaging density on PCBs

### ORIENTATIONS

- 90°
- 135°
- 180°
- Low and High Profile
- Offset Left or Right

### COLOR

- Orange
- Black
- Gray

Check complete PCB Products Catalog for specific series color options and additional pole versions.

## PM SERIES

- Leaf spring screw clamp termination
- Low cost, reliable terminal for commercial applications
- 5.08 mm pitch
- 300 V, 16 A UL rating
- Available in 2-16 pole versions



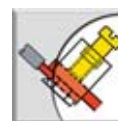
Poles	Description	Color	Part No.	Poles	Description	Color	Part No.
2	PM 5.08/2/90	OG	<b>1760490000</b>	3	PM 5.08/3/90	OG	<b>1760500000</b>
2	PM 5.08/2/90	BK	<b>1760510000</b>	3	PM 5.08/3/90	BK	<b>1760520000</b>



■ Leaf Spring

## LP SERIES

- Gas-tight screw clamp termination
- Single-, double- and triple-level blocks for high density applications
- Available in 5.00, 5.08, 7.50, 7.62, 10.00 and 15.00 mm pitch
- 90°, 135° and 180° wire orientation
- Available with test points
- Wire size range: 26...12 AWG
- 300 V, 15 A UL rating
- Wide range of accessories available:
  - disconnect terminals
  - disconnect elements
  - fuse holders
  - test plugs
  - LED holders
- Double- and triple-level blocks are footprint compatible with LM (screw clamp) and LMZF (tension clamp) terminal block series for added flexibility



■ Screw Clamp

Poles	Description	Color	Part No.	Poles	Description	Color	Part No.
2	LP 5.00/2/90	BK	<b>1696060000</b>	6	LP3R 5.08/6/90	OG	<b>1653940000</b>
3	LP 5.00/3/90	BK	<b>1696070000</b>	9	LP3R 5.08/9/90	OG	<b>1596330000</b>
2	LPP 5.00/2/90	BK	<b>1697140000</b>	12	LP3R 5.08/12/90	OG	<b>1596350000</b>
3	LPP 5.00/3/90	BK	<b>1697150000</b>	15	LP3R 5.08/15/90	OG	<b>1596370000</b>
2	LP 5.00/2/135	BK	<b>1697180000</b>	18	LP3R 5.08/18/90	OG	<b>1596390000</b>
3	LP 5.00/3/135	BK	<b>1697190000</b>	24	LP3R 5.08/24/90	OG	<b>1596410000</b>
2	LP 5.00/2/180	OG	<b>1761350000</b>	2	LP 7.50/2/90	BK	<b>1697220000</b>
3	LP 5.00/3/180	OG	<b>1761360000</b>	3	LP 7.50/3/90	BK	<b>1697230000</b>
2	LP 5.08/2/90	BK	<b>1696040000</b>	2	LPP 7.50/2/90	BK	<b>1697260000</b>
3	LP 5.08/3/90	BK	<b>1696050000</b>	3	LPP 7.50/3/90	BK	<b>1697270000</b>
2	LPP 5.08/2/90	BK	<b>1697120000</b>	2	LP 7.50/2/135	BK	<b>1697300000</b>
3	LPP 5.08/3/90	BK	<b>1697130000</b>	3	LP 7.50/3/135	BK	<b>1697310000</b>
2	LP 5.08/2/135	BK	<b>1676740000</b>	2	LP 7.50/2/180	OG	<b>1761390000</b>
3	LP 5.08/3/135	BK	<b>1676750000</b>	3	LP 7.50/3/180	OG	<b>1761400000</b>
2	LP 5.08/2/180	BK	<b>1753830000</b>	2	LP 7.62/2/90	BK	<b>1697200000</b>
3	LP 5.08/3/180	BK	<b>1753840000</b>	3	LP 7.62/3/90	BK	<b>1697210000</b>
1	LPTR 5.08/1/90	BK	<b>1755190000</b>	2	LPP 7.62/2/90	BK	<b>1697240000</b>
4	LP2N 5.08/4/90	OG	<b>1635150000</b>	3	LPP 7.62/3/90	BK	<b>1697250000</b>
6	LP2N 5.08/6/90	OG	<b>1625550000</b>	2	LP 7.62/2/135	BK	<b>1697280000</b>
8	LP2N 5.08/8/90	OG	<b>1596470000</b>	3	LP 7.62/3/135	BK	<b>1697290000</b>
10	LP2N 5.08/10/90	OG	<b>1596500000</b>	2	LP 7.62/2/180	BK	<b>1753910000</b>
12	LP2N 5.08/12/90	OG	<b>1632560000</b>	3	LP 7.62/3/180	BK	<b>1753920000</b>
16	LP2N 5.08/16/90	OG	<b>1596520000</b>				

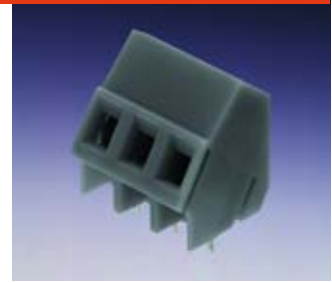
More products are available than shown.

Please contact us or visit our website: [www.weidmuller.com](http://www.weidmuller.com).



### LM SERIES

- Gas-tight screw clamp termination
- Low-profile — designed for applications where space is at a premium
- Single-, double- and triple-level blocks for high density applications
- Available in 3.50, 5.00 and 5.08 mm pitch
- 90°, 135° and 180° wire orientation
- Wire size range: 26...12 AWG
- 300 V, 10 A UL rating
- Available in 2- and 3-pole versions which can be dovetailed together
- Double- and triple-level blocks are footprint compatible with LP (screw clamp) and LMZF (tension clamp) terminal block series for added flexibility



■ Screw Clamp

Poles	Description	Color	Part No.	Poles	Description	Color	Part No.
2	LM 3.5/2/90	BK	<b>1699670000</b>	3	LM 5.08/3/90	BK	<b>1716030000</b>
3	LM 3.5/3/90	BK	<b>1699680000</b>	2	LM 5.08/2/135	BK	<b>1716060000</b>
2	LM 3.5/2/135	BK	<b>1715010000</b>	3	LM 5.08/3/135	BK	<b>1716070000</b>
3	LM 3.5/3/135	BK	<b>1715050000</b>	2	LM 5.08/2/180	BK	<b>1716040000</b>
4	LM2N 3.5/4/90	BK	<b>1720000000</b>	3	LM 5.08/3/180	BK	<b>1716050000</b>
6	LM2N 3.5/6/90	BK	<b>1720010000</b>	4	LM2N 5.08/4/90	BK	<b>1769080000</b>
8	LM2N 3.5/8/90	BK	<b>1720020000</b>	6	LM2N 5.08/6/90	BK	<b>1769090000</b>
10	LM2N 3.5/10/90	BK	<b>1720030000</b>	8	LM2N 5.08/8/90	BK	<b>1769100000</b>
12	LM2N 3.5/12/90	BK	<b>1720040000</b>	10	LM2N 5.08/10/90	BK	<b>1769110000</b>
16	LM2N 3.5/16/90	BK	<b>1720060000</b>	12	LM2N 5.08/12/90	BK	<b>1769120000</b>
2	LM 5.00/2/90	BK	<b>1715250000</b>	16	LM2N 5.08/16/90	BK	<b>1769140000</b>
3	LM 5.00/3/90	BK	<b>1715260000</b>	6	LM3R 5.08/6/90	BK	<b>1769930000</b>
2	LM 5.00/2/135	BK	<b>1715290000</b>	9	LM3R 5.08/9/90	BK	<b>1769940000</b>
3	LM 5.00/3/135	BK	<b>1715300000</b>	12	LM3R 5.08/12/90	BK	<b>1769950000</b>
2	LM 5.00/2/180	BK	<b>1715270000</b>	15	LM3R 5.08/15/90	BK	<b>1769960000</b>
3	LM 5.00/3/180	BK	<b>1715280000</b>	18	LM3R 5.08/18/90	BK	<b>1769970000</b>
2	LM 5.08/2/90	BK	<b>1716020000</b>	24	LM3R 5.08/24/90	BK	<b>1769990000</b>

**APPLICATION NOTE:**  
Ideal for high-density PCB applications

### LMZF SERIES

- Tension clamp termination for reduced wiring time – no special tools needed
- Single-, double- and triple-level blocks for high density applications
- Available in 5.08 mm pitch
- Double- and triple-level blocks are footprint compatible with screw clamp versions for added flexibility
- 300 V, 10 A UL rating



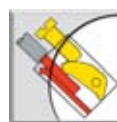
■ Tension Clamp

Poles	Description	Color	Part No.	Poles	Description	Color	Part No.
2	LMZF 5.08/2/90	BK	<b>1721640000</b>	10	LM2NZF 5.08/10/135	OG	<b>1764840000</b>
3	LMZF 5.08/3/90	BK	<b>1721650000</b>	12	LM2NZF 5.08/12/135	OG	<b>1764850000</b>
2	LMZF 5.08/2/135	BK	<b>1734220000</b>	16	LM2NZF 5.08/16/135	OG	<b>1764870000</b>
3	LMZF 5.08/3/135	BK	<b>1734230000</b>	6	LM3RZF 5.08/6/135	OG	<b>1764910000</b>
2	LMZF 5.08/2/180	BK	<b>1722400000</b>	9	LM3RZF 5.08/9/135	OG	<b>1764920000</b>
3	LMZF 5.08/3/180	BK	<b>1722410000</b>	12	LM3RZF 5.08/12/135	OG	<b>1764930000</b>
4	LM2NZF 5.08/4/135	OG	<b>1764810000</b>	15	LM3RZF 5.08/15/135	OG	<b>1764940000</b>
6	LM2NZF 5.08/6/135	OG	<b>1764820000</b>	18	LM3RZF 5.08/18/135	OG	<b>1764950000</b>
8	LM2NZF 5.08/8/135	OG	<b>1764830000</b>	24	LM3RZF 5.08/24/135	OG	<b>1764960000</b>

**TOP 4 GS, TOP 1.5 GS**

- Screw clamp termination
- For space restrictive applications that require wire and screwdriver access in same plane
- Available in 5.08, 6.35 and 7.62 mm pitch

Poles	Description	Color	Part No.	Poles	Description	Color	Part No.
2	TOP 1.5GS 5.08/2/90	OG	<b>1785590000</b>	3	TOP 4GS 6.35/3/180	OG	<b>1786200000</b>
2	TOP 1.5GS 5.08/2/90	BK	<b>1785700000</b>	3	TOP 4GS 6.35/3/180	BK	<b>1786310000</b>
3	TOP 1.5GS 5.08/3/90	OG	<b>1785600000</b>	2	TOP 1.5GS 7.62/2/90	OG	<b>0393360000</b>
3	TOP 1.5GS 5.08/3/90	BK	<b>1785710000</b>	3	TOP 1.5GS 7.62/3/90	OG	<b>1726210000</b>
2	TOP 1.5GS 5.08/2/180	OG	<b>1785810000</b>	2	TOP 1.5GS 7.62/2/180	OG	<b>0391360000</b>
2	TOP 1.5GS 5.08/2/180	BK	<b>1785920000</b>	3	TOP 1.5GS 7.62/3/180	OG	<b>0391460000</b>
3	TOP 1.5GS 5.08/3/180	OG	<b>1785820000</b>	2	TOP 4GS 7.62/2/90	OG	<b>0289660000</b>
3	TOP 1.5GS 5.08/3/180	BK	<b>1785930000</b>	2	TOP 4GS 7.62/2/90	BK	<b>1751780000</b>
2	TOP 4GS 6.35/2/90	OG	<b>1401760000</b>	3	TOP 4GS 7.62/3/90	OG	<b>0289760000</b>
2	TOP 4GS 6.35/2/90	BK	<b>1786110000</b>	3	TOP 4GS 7.62/3/90	BK	<b>1786460000</b>
3	TOP 4GS 6.35/3/90	OG	<b>1650300000</b>	2	TOP 4GS 7.62/2/180	OG	<b>0298360000</b>
3	TOP 4GS 6.35/3/90	BK	<b>0265910000</b>	2	TOP 4GS 7.62/2/180	BK	<b>1786590000</b>
2	TOP 4GS 6.35/2/180	OG	<b>1786190000</b>	3	TOP 4GS 7.62/3/180	OG	<b>0298460000</b>
2	TOP 4GS 6.35/2/180	BK	<b>1786300000</b>	3	TOP 4GS 7.62/3/180	BK	<b>1786600000</b>



■ TOP Clamp

**LL 9.5**

- 9.5 mm screw clamp termination
- Touch-safe alternative to barrier strips
- Gas-tight, self-locking clamping yoke for more security and faster wiring than barrier strips
- Compact design saves space
- Designed for limited high voltage applications up to 600 V, 5 A UL and standard applications up to 300 V, 30 A UL rating

Poles	Description	Color	Part No.	Poles	Description	Color	Part No.
2	LL 9.5/2/90	OG	<b>1724680000</b>	3	LL 9.5/3/90	OG	<b>1724690000</b>
2	LL 9.5/2/90	BK	<b>1724700000</b>	3	LL 9.5/3/90	BK	<b>1724710000</b>



■ Screw Clamp

**LU 10.16**

- Screw clamp termination
- Designed for high-power, high-current applications
- Large pitch for automation equipment
- Available with 2 or 4 solder pins per pole
- 90° wire orientation

Poles	Description	Color	Part No.	Poles	Description	Color	Part No.
2	LU 10.16/2/90 2 PIN	GY	<b>1648310000</b>	2	LU 10.16/2/90 4 PIN	GY	<b>1636170000</b>
3	LU 10.16/3/90 2 PIN	GY	<b>1648300000</b>	3	LU 10.16/3/90 4 PIN	GY	<b>1636180000</b>



■ Screw Clamp

**APPLICATION NOTE:**  
Ideal for motor drives applications

### GSE 10

- Screw clamp termination
- 10.16 mm pitch
- Large pitch for automation equipment
- Features integrated test points
- 180° wire orientation

**APPLICATION NOTE:**  
Ideal for automation and high power equipment applications



Poles	Description	Color	Part No.	Poles	Description	Color	Part No.
2	GSE 10/2/180	GY	<b>9954140000</b>	3	GSE 10/3/180	GY	<b>0478900000</b>
4	GSE 10/4/180	GY	<b>9954150000</b>	5	GSE 10/5/180	GY	<b>9958360000</b>
6	GSE 10/6/180	GY	<b>9954160000</b>	7	GSE 10/7/180	GY	<b>9958370000</b>
8	GSE 10/8/180	GY	<b>9954170000</b>	9	GSE 10/9/180	GY	<b>9958380000</b>
10	GSE 10/10/180	GY	<b>9954180000</b>				



■ Screw Clamp

### LX 15.00 SERIES

- Gas-tight screw clamp termination
- 15.00 mm pitch
- Rating of 600 V, 85 A per UL 1059
- Available with or without mounting flanges
- Features integrated test points and heat dissipation vents
- Accommodates up to 4 AWG wire



Poles	Description	Color	Part No.	Poles	Description	Color	Part No.
1	LX 15.00/1/90	GY	<b>1783660000</b>	2	LXB 15.00/2/90	GY	<b>1783710000</b>
2	LX 15.00/2/90	GY	<b>1783670000</b>	3	LXB 15.00/3/90	GY	<b>1783720000</b>
3	LX 15.00/3/90	GY	<b>1783680000</b>	4	LXB 15.00/4/90	GY	<b>1783730000</b>
4	LX 15.00/4/90	GY	<b>1783690000</b>	1	LXBL 15.00/1/90	GY	<b>1783700000</b>



■ Screw Clamp

**APPLICATION NOTE:**  
Designed specifically for drives technology, frequency converters and power supply applications.

### GSF 5

- Push-on tab wire termination
- 5.00 mm pitch
- Dual solder pin per pole



Poles	Description	Color	Part No.	Poles	Description	Color	Part No.
2	GSF5/2/90	OG	<b>0496760000</b>	2	GSF5/2/180	OG	<b>0490860000</b>
3	GSF5/3/90	OG	<b>0496860000</b>	3	GSF5/3/180	OG	<b>0490960000</b>



■ Push-on Tab Connection



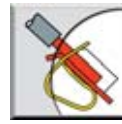
# PCB Connectors

## Free Choice of:

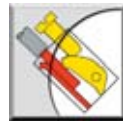
### TERMINATION STYLES



■ Screw Clamp



■ Tension Clamp



■ TOP Clamp



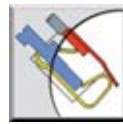
■ Leaf Spring



■ IDC



■ Crimp Clamp



■ Spring Connection

### PITCHES (MM)

- 3.50      ■ 5.00      ■ 5.08
- 7.50      ■ 7.62

### CONFIGURATION

- Single-, as well as double-level for higher packaging density on PCBs

### ORIENTATIONS

- 90°      ■ 110°      ■ 135°
- 180°      ■ 225°      ■ 270°

### MOUNTING OPTIONS

- Through-Hole
- Surface Mount Compatible
- Through-Hole Reflow

### UNIQUE APPLICATIONS

- Board-to-Board
- Rail Mount
- Wire-to-Wire
- Through-Panel

### ACCESSORIES

- Marking Strips
- Locking Tabs
- Coding
- Mounting Hardware
- Separation Elements
- Disconnect Aid
- Release Levers
- LEDs
- Cover Hoods
- Strain Relief

### COLOR

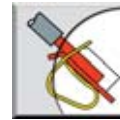
- Orange
- Black

Check complete PCB Products Catalog for specific series color options and additional pole versions.

## MINIMATE SERIES

### B2L/S2L 3.5 SERIES—DOUBLE-DENSITY

- Two connection rows - doubles connection density of standard 3.5 mm pitch systems
- Takes up to 30% less space in front panel applications and 10% less PCB space than 2.5/2.54 mm connectors
- Self-adjusting tension clamp requires no special tools
- Tin- or gold-plated contacts available
- Release lever for easy disconnect
- Open, closed and locking versions available
- Offered in 6-36 pole versions



■ Tension Clamp

Poles	Description	Color	Part No.	Other	Poles	Description	Color	Part No.	Other
6	S2L 3.5/6/90	BK	1728310000	tin-plated	6	S2L 3.5/6/90G	BK	1755520000	gold-plated
8	S2L 3.5/8/90	BK	1728320000	tin-plated	8	S2L 3.5/8/90G	BK	1755530000	gold-plated
6	S2L 3.5/6/90G	BK	1727990000	tin-plated	6	S2L 3.5/6/180	BK	1756800000	gold-plated
8	S2L 3.5/8/90G	BK	1728000000	tin-plated	8	S2L 3.5/8/180	BK	1756810000	gold-plated
6	S2L 3.5/6/90F	BK	1728630000	tin-plated	6	B2L 3.5/6/180	BK	1727640000	tin-plated
8	S2L 3.5/8/90F	BK	1728640000	tin-plated	8	B2L 3.5/8/180	BK	1727650000	tin-plated
6	S2L 3.5/6/180	BK	1729270000	tin-plated	6	B2L 3.5/6/180F	BK	1748170000	tin-plated
8	S2L 3.5/8/180	BK	1729280000	tin-plated	8	B2L 3.5/8/180F	BK	1748180000	tin-plated
6	S2L 3.5/6/180G	BK	1728950000	tin-plated	6	B2L 3.5/6/180LH	BK	1748490000	tin-plated
8	S2L 3.5/8/180G	BK	1728960000	tin-plated	8	B2L 3.5/8/180LH	BK	1748450000	tin-plated
6	S2L 3.5/6/180F	BK	1729590000	tin-plated	6	B2L 3.5/6/180	BK	1757390000	gold-plated
8	S2L 3.5/8/180F	BK	1729600000	tin-plated	8	B2L 3.5/8/180	BK	1757400000	gold-plated

#### APPLICATION NOTE:

Uses 10% less PCB space and up to 30% less front panel space than 2.5/2.54 mm connection systems.

More products are available than shown.  
Please contact us or visit our website: [www.weidmuller.com](http://www.weidmuller.com).

## OMNIMATE SERIES

## BL/SL 3.5 SERIES - SINGLE- AND DOUBLE-LEVEL

High density connection system with free choice of clamping style:

- BL 3.5 screw clamp
- BLZF 3.5 tension clamp
- BLIDC 3.5 insulation displacement clamp
- BLIDC B 3.5 Bus version insulation displacement clamp
- 2-24 pole versions available in most styles
- Offered in open, closed and locking versions

Poles	Description	Color	Part No.	Poles	Description	Color	Part No.
2	SL 3.5/2/90	BK	1614130000	2	BL 3.5/2/180	BK	1615670000
3	SL 3.5/3/90	BK	1615300000	3	BL 3.5/3/180	BK	1615680000
2	SL 3.5/2/90G	BK	1614160000	2	BLZF 3.5/2/180	BK	1690420000
3	SL 3.5/3/90G	BK	1615420000	3	BLZF 3.5/3/180	BK	1690430000
2	SL 3.5/2/110	BK	1644500000	2	BLIDC 3.5/2	BK	1770940000
3	SL 3.5/3/110	BK	1644510000	3	BLIDC 3.5/3	BK	1770950000
2	SL 3.5/2/135	BK	1643810000	2	BLIDCB 3.5/2 Bus	BK	1770670000
3	SL 3.5/3/135	BK	1643820000	3	BLIDCB 3.5/3 Bus	BK	1770680000
2	SL 3.5/2/180	BK	1614210000	2	BL 3.5/2/90	BK	1638780000
3	SL 3.5/3/180	BK	1615930000	3	BL 3.5/3/90	BK	1638790000
2	SL 3.5/2/180G	BK	1614240000	2	BL 3.5/2/270	BK	1639700000
3	SL 3.5/3/180G	BK	1616020000	3	BL 3.5/3/270	BK	1639710000



■ Tension Clamp



■ IDC



■ Screw Clamp

## OMNIMATE SERIES

## SL-SMT 3.5/5.00/5.08

## SMT COMPATIBLE THROUGH-HOLE REFLOW PIN HEADERS

- High temperature housing suitable for all SMT soldering processes
- THR design eliminates need for Wave or hand solder process, reducing costs up to 30%
- Three packaging types including cardboard box, anti-static tape-on-reel or tray packaging make them efficient for high volume production
- THR pins provide 10 times the mechanical strength of gull-wing SMT components
- THR pin design allows double-sided PCBs for high packaging density
- Can be fully integrated into automated assembly machines
- Free choice of connection side—mates with all Omnimate Series socket connectors
- Offered in open, closed and innovative solder flange versions

Poles	Type	Color	Part No.	Poles	Type	Color	Part No.
2	SL-SMT 3.5/2/90G	BK	1761542001	3	SL-SMT 5.08/3/90	BK	1774772001
2	SL-SMT 3.5/2/90G	BK	1761544001	3	SL-SMT 5.08/3/90	BK	1774774001
3	SL-SMT 3.5/3/90G	BK	1761552001	2	SL-SMT 5.08/2/90G	BK	1775002001
3	SL-SMT 3.5/3/90G	BK	1761554001	3	SL-SMT 5.08/3/90G	BK	1775012001
2	SL-SMT 3.5/2/90LF	BK	1762002001	2	SL-SMT 5.08/2/90LF	BK	1775232001
3	SL-SMT 3.5/3/90LF	BK	1762012001	3	SL-SMT 5.08/3/90LF	BK	1775242001
2	SL-SMT 3.5/2/180G	BK	1752982001	2	SL-SMT 5.08/2/180	BK	1775522001
3	SL-SMT 3.5/3/180G	BK	1752992001	3	SL-SMT 5.08/3/180	BK	1775572001
2	SL-SMT 3.5/2/180LF	BK	1760962001	2	SL-SMT 5.08/2/180G	BK	1775922001
3	SL-SMT 3.5/3/180LF	BK	1760972001	3	SL-SMT 5.08/3/180G	BK	1775932001
2	SL-SMT 5.08/2/90	BK	1774762001	2	SL-SMT 5.08/2/180LF	BK	1776362001
2	SL-SMT 5.08/2/90	BK	1774764001	3	SL-SMT 5.08/3/180LF	BK	1776372001

Part number suffix 2001 indicates box packaging.

Part number suffix 4001 indicates tape-on-reel packaging.



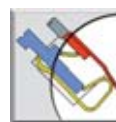
■ Surface Mount  
Through-Hole  
Reflow

**APPLICATION NOTE:**  
Reduced application time

## OMNIMATE SERIES

## BL I/O 3.5 - PLUGGABLE FIELD DEVICE CONNECTORS

- Spring connection—push-in technology, fingernail or screwdriver activated
- 3.50 mm pitch
- Single- and triple-row versions—10 or 30 poles
- Internal jumpering for power distribution
- Integrated LED module available
- Offers the functionality of an 8-channel I/O level with the simplicity and space savings of pluggable connectors



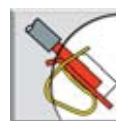
■ Spring Connection

Poles	Description	Color	Part No.	Poles	Description	Color	Part No.
30	BL-I/O 3.5/30/180F	BK	<b>1779920000</b>	10	BL-I/O 3.5/10/180F	BK	<b>1779880000</b>
30	BL-I/O 3.5/30/180F LED	BK	<b>1789110000</b>	10	BL-I/O 3.5/10/180F LED	BK	<b>1789090000</b>
30	BL-I/O 3.5/30/180FP	BK	<b>1779910000</b>	10	BL-I/O 3.5/10/180FP	BK	<b>1779870000</b>
30	BL-I/O 3.5/30/180FP LED	BK	<b>1789100000</b>	10	BL-I/O 3.5/10/180FP LED	BK	<b>1789080000</b>

## OMNIMATE SERIES

## BL/SL 5.00/5.08 SERIES - SINGLE- AND DOUBLE-LEVEL

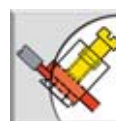
- 5 orientations to offer more design flexibility
- High density single and double level connection system
- 2-24 pole versions available for most variations
- Offered in open, closed and locking versions
- Free choice of clamping style:
  - BLZ screw clamp
  - BL leaf spring
  - BLT TOP clamp
  - BLC crimp clamp
  - BL IDC insulation displacement clamp
  - BLZF tension clamp
  - BLDT double plug for bus wiring



■ Tension Clamp



■ IDC



■ Screw Clamp



■ TOP Clamp



■ Leaf Spring



■ Crimp Clamp

Poles	Description	Color	Part No.	Poles	Description	Color	Part No.
2	SL 5.00/2/90	BK	<b>1625990000</b>	2	SL 5.08/2/180	BK	<b>1521810000</b>
3	SL 5.00/3/90	BK	<b>1626000000</b>	3	SL 5.08/3/180	BK	<b>1521910000</b>
2	SL 5.00/2/180	BK	<b>1626390000</b>	2	BL 5.08/2/180	BK	<b>1716470000</b>
3	SL 5.00/3/180	BK	<b>1626400000</b>	3	BL 5.08/3/180	BK	<b>1716480000</b>
2	BL 5.00/2/180	BK	<b>1730700000</b>	2	BLZ 5.08/2/180	BK	<b>1526410000</b>
3	BL 5.00/3/180	BK	<b>1730710000</b>	3	BLZ 5.08/3/180	BK	<b>1526510000</b>
2	BLZ 5.00/2/180	BK	<b>1625610000</b>	2	BLT 5.08/2/180	BK	<b>1499510000</b>
3	BLZ 5.00/3/180	BK	<b>1625620000</b>	3	BLT 5.08/3/180	BK	<b>1499610000</b>
2	BLZF 5.00/2/180	BK	<b>1696600000</b>	2	BLIDC 5.08/2	BK	<b>1759390000</b>
3	BLZF 5.00/3/180	BK	<b>1696610000</b>	3	BLIDC 5.08/3	BK	<b>1759400000</b>
2	SL 5.08/2/90	BK	<b>1512610000</b>	2	BLC 5.08/2/180R	BK	<b>1711960000</b>
3	SL 5.08/3/90	BK	<b>1512710000</b>	3	BLC 5.08/3/180R	BK	<b>1711970000</b>

**OMNIMATE SERIES**

**BL/SL 7.50/7.62 SERIES - SINGLE LEVEL**

- Larger pitch offering available in 3 wire orientations
- Free choice of clamping style:
  - BL screw clamp
  - BLZF tension clamp

Poles	Description	Color	Part No.	Poles	Description	Color	Part No.
2	SL 7.50/2/90	BK	1628690000	2	SL 7.62/2/90	BK	1623820000
3	SL 7.50/3/90	BK	1628700000	3	SL 7.62/3/90	BK	1623830000
2	SL 7.50/2/180	BK	1629350000	2	SL 7.62/2/180	BK	1624700000
3	SL 7.50/3/180	BK	1629360000	3	SL 7.62/3/180	BK	1624710000
2	BLZ 7.50/2/180	BK	1628030000	2	BLZ 7.62/2/180	BK	1623160000
3	BLZ 7.50/3/180	BK	1628040000	3	BLZ 7.62/3/180	BK	1623170000
2	BLZF 7.50/2/180	BK	1722940000	2	BLZF 7.62/2/180	BK	1722720000
3	BLZF 7.50/3/180	BK	1722950000	3	BLZF 7.62/3/180	BK	1722730000
2	BLZ 7.50/2/90	BK	1701900000	2	BLZ 7.62/2/90	BK	1702780000
3	BLZ 7.50/3/90	BK	1701910000	3	BLZ 7.62/3/90	BK	1702790000
2	BLZ 7.50/2/270	BK	1702340000	2	BLZ 7.62/2/270	BK	1703220000
3	BLZ 7.50/3/270	BK	1702350000	3	BLZ 7.62/3/270	BK	1703230000



■ Tension Clamp



■ Screw Clamp

**UNIQUE APPLICATION CONNECTORS**

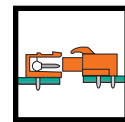
- SLS and SLZF pin plugs for rail-mount or free-hanging wire-to-wire, as well as inverse wire-to-board applications
- BLL socket header for touch safe PCBs and board-to-board applications
- SLDF front panel header for through-panel applications

Poles	Description	Color	Part No.	Poles	Description	Color	Part No.
2	BLZF 5.08/2/180	BK	1707690000	2	SLZF 5.08/2/180	BK	1709600000
3	BLZF 5.08/3/180	BK	1707700000	3	SLZF 5.08/3/180	BK	1709610000
2	BLZF 5.08/2/180B	BK	1708530000	2	SLZF 5.08/2/180B	BK	1710440000
3	BLZF 5.08/3/180B	BK	1708540000	3	SLZF 5.08/3/180B	BK	1710450000
2	BLZF 5.08/2/90	BK	1671020000	2	SLZF 5.08/2/90	BK	1673320000
3	BLZF 5.08/3/90	BK	1671030000	3	SLZF 5.08/3/90	BK	1673330000
2	BLZF 5.08/2/90B	BK	1671480000	2	SLZF 5.08/2/90B	BK	1669910000
3	BLZF 5.08/3/90B	BK	1671490000	3	SLZF 5.08/3/90B	BK	1669920000
2	BLZF 5.08/2/270	BK	1672170000	2	SLZF 5.08/2/270	BK	1688660000
3	BLZF 5.08/3/270	BK	1672180000	3	SLZF 5.08/3/270	BK	1688670000
2	BLZF 5.08/2/270B	BK	1672630000	2	SLZF 5.08/2/270B	BK	1706370000
3	BLZF 5.08/3/270B	BK	1672640000	3	SLZF 5.08/3/270B	BK	1706380000

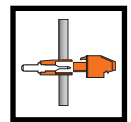
Poles	Description	Color	Part No.	Poles	Description	Color	Part No.
2	BLL 5.08/2/90	BK	1646030000	3	BLL 5.08/3/180	BK	1646260000
3	BLL 5.08/3/90	BK	1646040000	2	BLL 5.08/2/180B	BK	1684230000
2	BLL 5.08/2/90B	BK	1684000000	3	BLL 5.08/3/180B	BK	1684240000
3	BLL 5.08/3/90B	BK	1684010000	2	SLDF 5.08/2	BK	1635740000
2	BLL 5.08/2/180	BK	1646250000	3	SLDF 5.08/3	BK	1635750000



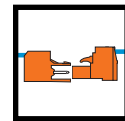
**SPECIALTY APPLICATIONS:**



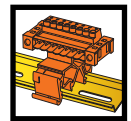
■ Board-to-Board



■ Through-Panel



■ Wire-to-Wire



■ Rail-Mount



# Tools

**For over 25 years, Weidmuller has been designing and manufacturing tools from the highest quality materials.** These tools

reduce fatigue in repetitive use and are precision-crafted and assembled for long tool life.

We feature a full range of heavy-duty tools designed for industrial use. Our wire and cable cutters, wire strippers and crimpers are capable of handling wires ranging in size from 26 AWG to 750 MCM.



## CUTTING TOOLS

- Accurately prepares cables and conductors for different types of connections
- Full product range—tools for small to large wire sizes
- Designed to produce a smooth, straight cut without distortion of the conductor
- Precisely cuts copper and aluminum cables

### KT 8

- Cuts copper and aluminum cables up to 8 mm (0.31 in) diameter or 6 AWG

### KT 36

- Cuts copper and aluminum cables up to 35 mm (1.38 in) diameter or 500 MCM
- Designed for one-hand operation
- Blade release in any position
- Ratchet mechanism

### KT 45

- Cuts copper and aluminum cables up to 45 mm (1.78 in) diameter or 600 MCM
- Designed for one-hand operation
- Blade release in any position
- Ratchet mechanism



KT 8



KT 45



KT 36

Description	Part No.	Description	Part No.
KT 8	9002650000	KT 45	9002000000
KT 36	9001090000		

More products are available than shown.  
Please contact us or visit our website: [www.weidmuller.com](http://www.weidmuller.com).



**STRIPPING TOOLS - STRIPAX® AND STRIPAX® 16**

- Designed to ensure precise preparation of conductor for further processing or for crimping
- Long working life
- Improved ergonomic design
- Stripping length adjustable by setting wire stop
- Adjustable to different insulation thickness
- Precise, self-adjusting wire/cable cutter



STRIPAX®

**STRIPAX®**

- Stripping and cutting tool for flexible, stranded and solid conductors with PVC insulation for cross-sections 0.08...6 mm<sup>2</sup> (28...10 AWG)
- 32 self-adjusting stripping blades precisely cut the insulator without damage to the conductor

**STRIPAX® 16**

- Stripping and cutting tool for flexible, stranded and solid conductors with PVC insulation for cross-sections 6...16 mm<sup>2</sup> (10...6 AWG)



STRIPAX 16®

**AM 25/35**

- Stripping tools for round PVC cables
- AM 25 is for round cables 4.5...25 mm (0.18...0.98 in) diameter/AM 35 is for round cables 25...36 mm (0.98...1.42 in) diameter
- Laser trimmed blade (replaceable)
- Swivel blade for circular, longitudinal and spiral cuts
- Adjustable cutting depth for insulation up to 4.5 mm (0.18 in) thickness



AM 25/35

Description	Part No.	Description	Part No.
stripax®	<b>9005000000</b>	AM 25	<b>9001540000</b>
stripax®16	<b>9005610000</b>	AM 35	<b>9001080000</b>

## NEW GENERATION OF FERRULE CRIMPING TOOLS

- High-quality and precise tools designed to create an electrically and mechanically secure connection
- Broad product offering for all application needs
- New handle contour for reduced fatigue and improved ergonomics
- Offers 20% greater crimping force with 20% less manual force
- Long working life
- Standardized results for global applications

### STRIPAX® PLUS 2.5

- Cuts, strips, crimps
- Automatic transport of ferrules
- Ratchet for precise crimping
- Only one tool needed for wire preparation
- Wire inserted in front for stripping, wire inserted from the side for cutting and crimping

### PZ/HTF/HTG/CTX SERIES OF CRIMPERS

- Ratchet for precise crimping
- Ratchet release option in case of incorrect operation
- Adjustable locator for exact positioning of contacts (HTF series)

#### PZ 4

- For crimping ferrules according to DIN 46228 parts 1 and 4 with and without plastic collars from 0.5...4 mm<sup>2</sup> (20...12 AWG)
- One crimping profile for entire wire range
- Ferrule insertion from the side

#### PZ 6/5

- For ferrules according to DIN 46228 parts 1 and 4 with and without plastic collars from 0.25...6 mm<sup>2</sup> (24...10 AWG)
- Crimp conforms to EN-60947-1
- Five crimping profiles for rated conductor cross-sections
- Ferrule insertion from the side

#### PZ 3

- For ferrules according to DIN 46228 parts 1 and 4 with and without plastic collars from 0.75...6 mm<sup>2</sup> (18...10 AWG)
- One profile for entire wire range
- Ferrule insertion from the front

#### PZ 6 ROTO

- For ferrules according to DIN 46228 parts 1 and 4 with and without plastic collars from 0.25...6 mm<sup>2</sup> (24...10 AWG)
- Unique OMEGA spring provides correct compression regardless of ferrule size
- One profile for entire wire range
- Rotatable crimp die for ferrule insertion from the front or the side



stripax® plus 2.5



PZ 3



PZ 4



PZ 6 roto



PZ 6/5

Description	Part No.	Description	Part No.
stripax® plus 2.5	902000000	PZ 6 roto	901435000
PZ 4	901250000	PZ 6/5	901146000
PZ 3	056730000		

**CRIMPING TOOLS, CONTINUED (HDC Terminals)**

**HTF RSV SERIES**

- For Weidmuller RSV and DSTV-HD contacts

**HTF SERIES**

- For receptacles with open or rolled crimp barrels

**HTF SUB-D/HTF SUB-HD**

- SUB-D and SUB-HD contacts with open crimp barrels

**CTX CM SERIES**

- For HE-Series pin and socket contacts

**HTG/HTX AND CTX SERIES OF CRIMPERS**

- For coaxial connectors such as BNC, TNC and N connectors with RG 58, RG 59, RG 62, RG 71 and other cables
- Crimping profiles for center contact and outer sleeve
- Ratchet for precise crimping
- Ratchet release option in case of incorrect operation



HTF Series



CTX CM Series



HTF SUB-D/HTF SUB-HD



HTG Series

**MTR 35/MTR 110**

- Fast ratchet action for easy connector centering and crimping
- Ratchet release option in case of incorrect operation
- Precision mechanism enables high crimping pressure with low manual force
- Purely mechanical function guarantees safe and easy handling under all conditions
- Comprehensive range of crimping die sets conforming to standards
- Customer-specific crimping die sets available on request
- Hinged head for easy removal of the crimped connector
- Lockable hand lever for easy transportation

**MTR 35**

- For connectors such as tube cable lugs 6...50 mm<sup>2</sup> (10...0 AWG) and ferrules 25...50 mm<sup>2</sup> (4...0 AWG)

**MTR 110**

- For connectors such as tube cable lugs 10...120 mm<sup>2</sup> (8 AWG...250 MCM) and ferrules 70...95 mm<sup>2</sup> (00...000 AWG)



MTR 35



MTR 110

Description	Part No.	Description	Part No.
HTF SUB-D	<b>9013260000</b>	MTF SUB-HD	<b>9013530000</b>
MTR 35	<b>9017500000</b>	MTR 110	<b>9018020000</b>

**FERRULES**

**WIRE END FERRULES**

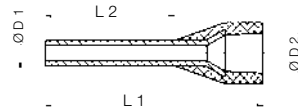
- Designed to ensure long-term consistent quality of electrical connection
- Features secure gas-tight crimp connection
- Easy insertion
- Standardized color coded for instant identification
- Uninsulated and insulated versions

Description	Part No.	Description	Part No.
H 1/14 18 AWG Yellow	<b>0463000000</b>	H 0.5/14 20 AWG Orange	<b>0690700000</b>
H 1.5/14 16 AWG Red	<b>0463100000</b>	H 1.0/145* 18 AWG Yellow	<b>9025970000</b>
H 0.75/14 18 AWG White	<b>0462900000</b>	H 2.5/14 14 AWG Blue	<b>9019160000</b>

\* slightly larger plastic collar diameter



FERRULES



Ferrules with plastic collars

		Nominal cross-section		Dimensions (mm)				Stripping length (mm)	Qty.
		(mm <sup>2</sup> )	AWG	L 1	L 2	D 1	D 2		
0.14		0.14	26	10	6	0.6	1.5	8	500
		0.14	26	12	8	0.6	1.5	10	500
0.25		0.25	24	10	6	0.8	1.8	8	500
		0.25	24	12	8	0.8	1.8	10	500
0.34		0.34	22	10	6	0.8	2	8	500
		0.34	22	12	8	0.8	2	10	500
0.5		0.5	20	10	6	1	2.6	8	500
		0.5	20	12	6	1	2.6	8	500
		0.5	20	14	8	1	2.6	10	500
		0.5	20	14	8	1	2.6	10	5000
0.75		0.75	18	16	10	1	2.6	12	500
		0.75	18	12	6	1.2	2.8	8	500
		0.75	18	14	8	1.2	2.8	10	500
		0.75	18	14	8	1.2	2.8	10	5000
1		1	17	16	10	1.4	3	12	500
		1	17	12	6	1.4	3	8	500
		1	17	14	8	1.4	3	10	500
		1	17	14	8	1.4	3	11	5000
1.5		1.5	16	16	10	1.7	3.2	10	5000
		1.5	16	14	8	1.7	3.2	10	500
		1.5	16	16	10	1.7	3.5	12	500
		1.5	16	16	10	1.7	3.5	15	500
2.5		2.5	14	24	18	1.7	3.5	20	500
		2.5	14	14	8	2.2	4.2	10	500
		2.5	14	14	8	2.2	4	11	3000
		2.5	14	14	8	2.2	4	11	500
4		4	12	26	18	2.8	4.8	20	500
		4	12	20	12	2.8	4.8	14	500
		4	12	26	18	2.8	4.8	20	500
6		6	10	26	18	3.5	6.3	20	100
		6	10	20	12	3.5	6.3	14	100
10		10	7	28	18	4.5	7.6	21	100
		10	7	22	12	4.5	7.6	15	100
16		16	6	36	22	7.3	11.2	24	50
		16	6	24	12	5.8	8.8	15	100
25		25	3	30	16	7.3	11.2	18	50
		25	3	36	22	7.3	11.2	24	50
35		35	2	30	16	8.3	12.7	19	50
		35	2	30	18	8.3	12.7	21	50
		35	2	39	25	8.3	12.7	28	50
50...		50	1	36	20	10.3	15	26	50
		50	1	40	25	10.3	15	31	50
		70	2/0	37	20	12.7	16	26	25
		95	3/0	44	25	14.7	18	31	25
		120	4/0	50	30	16.5	21	36	25
	150	300 MCM	54	32	18.5	23.5	38	25	

Strip pack 5 x 100 ferrules  
\*5 x 50 ferrules

Weidmuller standard

Type	Color	Part No.	Strip pack Part No.	Ferrules in strip form Part No.	Ferrules on reel Part No.
H 0.14/10	gray		9005180000		
H 0.14/12	gray		9028240000		
H 0.25/10	light blue	9025740000	9026050000		
H 0.25/12	light blue	9025760000	9025780000		
H 0.34/10	turquoise	9025750000	9026030000		
H 0.34/12	turquoise	9025770000	9025790000		
H 0.34/12	turquoise				9004390000
H 0.5/10	orange		9028260000		
H 0.5/12	orange	0409500000			
H 0.5/14	orange	0690700000	9026060000	9004270000	
H 0.5/14	orange				9005810000
H 0.5/16	orange	9025870000	9028270000		
H 0.75/12	white	0409600000	9028280000		
H 0.75/14	white	0462900000	9026070000	9004290000	
H 0.75/14	white				9005820000
H 0.75/16	white	9025860000	9028290000		
H 0.75/18	white	9025910000	9028300000		
H 1/12	yellow	0409700000	9028310000		
H 1/14	yellow	0463000000	9026080000	9004320000	
H 1/14	yellow				9005830000
H 1/16	yellow	9025950000	9028320000		
H 1/18	yellow	9025930000	9028340000		
H 1.5/14	red	0463100000	9026090000		
H 1.5/14	red				9005840000
H 1.5/14	red			9004340000	
H 1.5/16	red	0635100000	9028350000		
H 1.5/24	red	0565600000			
H 2.5/14 D	blue	9019160000	9026100000		
H 2.5/14 D	blue				9005850000
H 2.5/14 D	blue			9004360000	
H 2.5/18 D	blue	9019170000			
H 2.5/24 D	blue	9019180000			
H 4/17 D	gray	9019190000	9026010000*		
H 4/20 D	gray	9019200000			
H 4/26 D	gray	9019210000			
H 6/20	black	0533500000			
H 6/26	black	0565700000			
H 10/22	ivory	0534200000			
H 10/28	ivory	0565800000			
H 16/24	green	0565900000			
H 16/28	green	0566000000			
H 25/30	brown	0317000000			
H 25/36	brown	0317100000			
H 35/30	beige	0317200000			
H 35/39	beige	0317300000			
H 50/36	olive	0444200000			
H 70/40	yellow	9028200000			
H 95/44	red	9028210000			
H 120/50	blue	9028220000			
H 150/54	yellow	9028230000			

More products are available than shown.  
Please contact us or visit our website: [www.weidmuller.com](http://www.weidmuller.com).

**AUTOMATIC MACHINES**

**CRIMPFIX "L"**

- Electronically controlled electrical/pneumatic driven stripping and crimping machine
- Fully automated
- 0.5...2.5 mm<sup>2</sup> (20...14 AWG) wire range
- Wire and ferrule size selector makes changing dies unnecessary
- Large capacity hopper holds 500-1000 loose ferrules, depending on ferrules size
- Accepts loose ferrules
- Completed crimping cycle is less than 2 seconds per crimp
- Two position selector switch for strip-only mode or strip and crimp mode
- Recommended for high-volume ferrule applications

**CUTFIX 8**

- Electrically driven cutting machine
- Cuts single/flexible wires up to 8 mm (.1 in.)
- Microprocessor controlled for precision cuts



Cutfix 8

**POWERSTRIPPER 6.0**

- Electrically driven stripper
- Strips flexible conductors DIN VDE 0295, KL. 5
- Full or partial stripping, the insulation hangs on end of conductor
- No tool change required for different size wires
- Easy and quick adjustment to conductor cross-section
- Stripping range 0.14...0.6 mm<sup>2</sup> (26...10 AWG)



Crimpfix L



Powerstripper 6.0

Description	Part No.	Description	Part No.
Cutfix 8 (120 V)	67602058	Powerstripper 6.0 (120 V)	9050180000
Crimpfix "L" (120 V)	9025290000		

**NEW**

**TORQUE SCREWDRIVERS**

- Used for screw connections and direct push-fit method
- Ergonomically designed for high efficiency

**DMS-M/DMSI-M**

- Compact and lightweight
- Standard slot, Pozidrive and Phillips bits available
- Easily adjustable to your specific torque range
- Integrated window for viewing the scale
- Ergonomic handle size to match the torque range
- Audible and physically noticeable "click" signaling the correct torque
- Exchangeable bits made from high grade abrasive resistant tool steel
- Accurate to +/- 6% of set value

**SDI/SD**

- VDE-insulated slot-head screwdrivers
- Designed to DIN and VDE standards for slotted and Phillips head screws
- Insulated handles and shafts for working on live systems
- Ergonomically designed to reduce fatigue



DMS-M and DMSI-M



SDI/SD

Description	Range	Part No.
DMS-M	0.5-1.7 Nm	9918370000
DMSI-M	2.0-8.0 Nm	9918390000

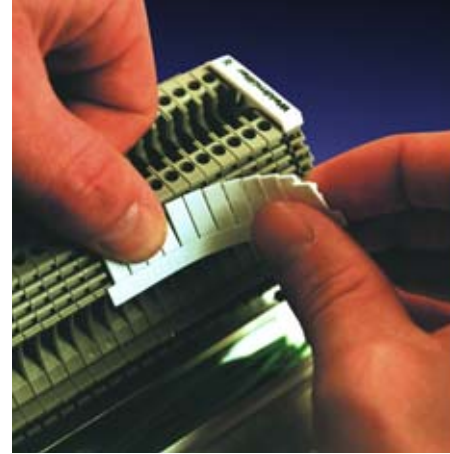
Description	Dimensions mm(in.)			Part No.
	A	B	C	
SDI	0.4 (0.016)	2.5 (0.10)	75(3.0)	9008370000
SDI	0.5 (0.020)	3.0 (0.12)	100(3.9)	9008380000
SDI	0.6 (0.024)	3.5 (0.14)	100(3.9)	9008390000
SDI	0.8 (0.030)	4.0 (0.16)	100(3.9)	9008400000
SDI	1.0 (0.040)	4.5 (0.18)	125(4.9)	9008910000
SDI	1.0 (0.040)	5.5 (0.22)	125(4.9)	9008410000
SDI	1.2 (0.050)	6.5 (0.25)	150(5.9)	9008420000
SDI	1.6 (0.062)	8.0 (0.30)	175(6.9)	9008430000



# Marking Systems Products

## MARKING SYSTEMS

- Products and complete systems that clearly and visibly identify all operational materials, such as cables, connectors, terminal blocks and equipment
- Markings based on a system of color codes or markings with the number of the connection
- Extensive range of marking systems for various application needs
- Multi-digit
- White or colored
- Ready-to-use markers pre-printed with the majority of commonly used numbers, letters and symbols used by electricians and systems integrators
- Ready-to-use custom-printed markers—easy to use, incur no storage costs and make the best use of materials
- Blank markers for inscription on-site deliver quick and professional results with our complete range of on-site machine-assisted hardware and software
- Individually printed marking or comprehensive group marking



### TERMINAL MARKERS—PREPRINTED

#### DEKAFIX (DEK)

- Suitable for all Weidmuller wiring and plug-in connectors
- Intended for use with Weidmuller SAK-, W- and Z-Series
- Flush-fitting for optimal and secure fit
- Suitable for short sequences of numbers
- Strip assembly for rapid fit in one operation
- Available in all colors of international color code
- Also for individual printing



### TERMINAL MARKERS—CUSTOM PRINT

#### MULTICARD FOR PRINTJET/ PLOTTER MARKING

- Computer-based marking system that links M-Print software and IP 220 Plotter unit for terminal block tags, wire and cable markers and equipment identification
- Every MultiCard has the same external dimensions so that only one plotter frame is required
- Designed for Weidmuller terminals, 3rd party terminals, conductors, cables and equipment
- Easy sorting facilitates handling
- Tabs are easily separated
- Project description area can be produced above tags
- Single tags can be attached in strips to simplify marking
- Custom marked labels in strips will reduce marking cost



WS Strip Tab System



PrintJet

More products are available than shown.  
Please contact us or visit our website: [www.weidmuller.com](http://www.weidmuller.com).

TERMINAL MARKERS—CUSTOM, CONTINUED

**DEK TABS IN MULTICARD FORMAT**

- Compact size enables them to be used with all Weidmuller terminals
- Suitable for short character sequences

**WS TABS IN MULTICARD FORMAT**

- Designed specifically for use with Weidmuller W-Series terminals
- Suitable for longer character sequences

**ZS TABS IN MULTICARD FORMAT**

- Suitable for use with the compact Z-Series terminals
- Feature a hinged carrier—tags can be folded upwards, if required, in order to access the cross-connections

**GWS TABS IN MULTICARD FORMAT**

- Suitable for use with all types of terminals supplied by Woertx and Allen-Bradley

**MULTIFIT TABS (THIRD PARTY MARKING)**

- Available in MultiCard format for in-house printing using the plotter system
- Offers a wide range of ready-to-use printed markers for non-Weidmuller terminals from Phoenix, Wago, Sprecher + Schuh, Wieland, Entrelec and Telemecanique
- One marker required for 6 suppliers saves on both storage space and costs
- Ready-to-use printed markers with standard print
- Ready-to-use individual markers, marked by Weidmuller in accordance with your CAD files or lists
- Project identifier section assigned to each strip



DEK Tabs in MultiCard Format



ZS Tabs in MultiCard Format



WS Tabs in MultiCard Format



GWS Tabs in MultiCard Format



Multifit Tabs (Third Party Marking)

Description	Part No.	Description	Part No.
Dekafix FS 6, vert. MKD 1-50	<b>468760001</b>	WS 12/5 Multi Card	<b>1609860000</b>
Dekafix FW 5, horz. MKD 1-50	<b>473460001</b>	WS 12/6 Multi Card	<b>1609900000</b>
Dekafix FS 5, vert. MKD 1-50	<b>473560001</b>	MF 10/6 Blank, White	<b>1677220000</b>

PCB CONNECTORS AND TERMINAL BLOCK MARKERS

**KSW MARKING STRIPS**

- Allows easy identification of specific termination points
- Features adhesive—may be affixed to printed circuit board terminal blocks to simplify field wiring and installation by clearly identifying circuits



## CABLE MARKER SYSTEM



- Marking systems for:
  - Full range of applications—from thin wires to heavy cables
  - Marking with numbers from a standard character set
  - The combination of individual pre-printed letters and numbers to customize one-of-a-kind printing
- Halogen-free and low-pollutant material



### SLIMFIX

- Wire marker
- 10 sizes for conductor cross-section from 0.25 mm<sup>2</sup>...16 mm<sup>2</sup> (24...6 AWG)
- 2 sleeve lengths: 21 mm and 12 mm (0.83 in and 0.47 in)
- Available in white, yellow, red and blue
- Tight fit on wire
- User-friendly and time-saving Multicard format inserts
- Project data can be printed on side of MultiCard for easy recognition after storing

### SLIMFIX CLIP

- Open and closed cable marker designed for flexibility and safety
- Tight fit on cable due to compression spring effect molded into marker
- Due to closing mechanism it is possible to attach marker after conductor is terminated

- User-friendly and time-saving Multicard format for standard and custom printing requirements
- Project data can be printed on Multicard borders for easy recognition after storing
- One size for conductor cross-section from 0.5 mm<sup>2</sup>...2.5 mm<sup>2</sup> (20...14 AWG)
- Marker length: 12 mm (0.47 in)

### PARTEX PA

- Marking system for non-terminated cables
- Sleeve form ensures a captive fit to cable
- 4 sizes for cable cross-section from 0.5 mm<sup>2</sup>...70 mm<sup>2</sup> (20...2/0 AWG)

### PK

- Flexible fitting with cable ties for large cross-sections
- Sleeves will be combined on PKH retaining strip



SlimFix



partex PA



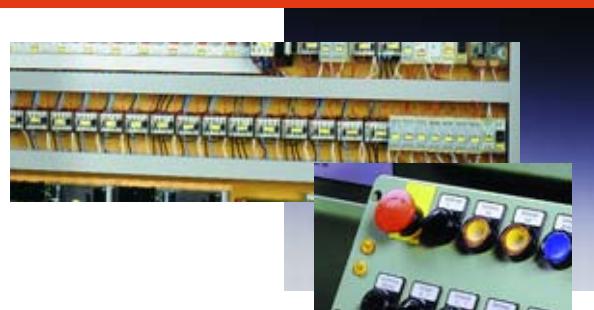
SlimFix Clip



PK

## EQUIPMENT MARKER SYSTEM

- Offers the classical adhesive method and the quick slot-in method with true-to-original plates
- Inscribe manually or utilize our software for use on a printer or plotter system
- Available as ready-to-use markers
- Bar code or graphics can be printed for special applications







# Marking Systems Products

## MARKING EQUIPMENT

- An effective combination of efficient hardware and user-friendly software
- Designed to produce terminal, conductor and equipment markers quickly and cost-effectively
- Integrates order information—project, customer and batch—with the basic marking data to create an optimally coordinated process



## PRINTJET II PRINTER

The only system of its kind on the market today, the exceptional print quality of the PrintJet II raises the bar of conventional inkjet performance to a higher level. The PrintJet II is a remarkable and innovative tool for marking terminal block tags, wire and cable markers and equipment markers—surpassing every print system for tags and markers in the market of equal price with its flexibility, speed and print quality.

- EASY TO USE
- Inkjet technology
- Same self-contained, disposable cartridges used in standard inkjet printers
- Cartridge prints 200,000 characters (Arial, 6 pt)
- Unique thermal heating process for smear/smudge resistant print
- Markers are ready-to-use—no waiting for ink to dry or cure
- Photo quality—up to 2880 dpi
- Prints up to 200 tags per minute
- Designed to work with Weidmuller's full line of MultiCard markers
- Optional MultiCard magazine—holds 5-20 cards
- Uses M-Print marking software—included
- Hardware/software compatible with all Windows operating systems



PrintJet II Printer

Description	Part No.
PrintJet II Printer	<b>1858980000</b>



# Marking Systems Solutions

When it comes to marking solutions, Weidmuller has a one-system approach that's right on the money. We can mark up to 95% of the products in your panel. Weidmuller is with you from start to finish, reducing your total costs through faster, more efficient products and services.

Weidmuller is your "one-stop shop" with a hardware/software marking solution for every need.

## MARKING SOFTWARE & SERVICES

- Produce your own markers or choose to have them made by Weidmuller's trained specialists
- Programs include various import functions enabling the easy transfer of data directly from your CAD system
- Utilize simple Windows® features such as 'copy' and 'paste' or Windows® Clipboard to assist in exchanging data with other Windows® programs such as Word and Excel
- Enter data manually or with an automatic numbering function—permits simple production of labels, consecutive numbers and repetitive sequences
- User-friendly features such as structured menu prompting and detailed online help
- WYSIWYG display (what you see is what you get) of the tag or label prevents misalignments or offset printing
- Can be used with Windows® 95/98, 2000, NT and XP operating systems
- Software is provided on CD-ROM, available in English, German and Spanish



### M-PRINT

- Software solution for the printing of terminal block tags, wire and cable markers and equipment labels
- Use with PrintJet Printer or IP-220 plotter to print on all MultiCard formats
- Database contains all Weidmuller terminal blocks, most competitors' terminal blocks and a complete assortment of labels for wire and cable marking—printable on laser and dot matrix printers
- Software updates are available free of charge at [www.weidmuller.com](http://www.weidmuller.com)

### M-LABEL

- Software solution for the printing of labels containing a number of different field types
- Prints multiple fonts, sizes, shapes, graphics, barcodes and logos
- Over 100 pre-defined label styles in database
- Includes special electro-industry-specific character file
- Expandable database—add other labels or customize
- Supports all Windows®-installed printers and true-type fonts
- Text data can be input manually or with an automatic numbering function



M-Print



M-Label



M-COMM 2

## CUSTOM SERVICES

Weidmuller technicians will provide custom marking solutions for your assemblies, terminals, equipment, cables and wires.



More products are available than shown.  
Please contact us or visit our website: [www.weidmuller.com](http://www.weidmuller.com).



# Index (Numeric)

Part No.	Description	Page No.	Part No.	Description	Page No.	Part No.	Description	Page No.
<b>Weidmuller Product Overview Index (Numeric)</b>			0478900000	GSE 10/3/180 GY	42	1608740000	ZAP/ZDU 2.5	35
<b>00000</b>			0490860000	GSF5/2/180 OG	42	1608830000	ZAP/ZDU 6	35
12280	TS 32 x 15 Solid Steel 2 m	35	0490960000	GSF5/3/180 OG	42	1608860000	ZQV 2.5/2	31, 35
23640	TS 35 x 15 Solid Steel 2 m	35	0496760000	GSF5/2/90 OG	42	1608870000	ZQV 2.5/3	31, 35
23650	TS 35 x 15 Slotted Steel 2 m	35	0496860000	GSF5/3/90 OG	42	1608880000	ZQV 2.5/4	35
38340	TS 35 x 7.5 Solid Steel 2 m	35				1608940000	ZQV 2.5/10	35
51440	TS 32 x 15 Slotted Steel 2 m	35	<b>0500000000</b>			1608950000	ZQV 4/2 (Jumper 2-pole)	12, 14, 18, 35
51450	TS 35 x 7.5 Slotted Steel 2 m	35	0567300000	PZ 3	49	1608960000	ZQV 4/3 (Jumper 3-pole)	12, 14, 18, 35
						1608970000	ZQV 4/4	35
<b>900000</b>			<b>0600000000</b>			1609030000	ZQV 4/10	35
912126	RS-ELCO 38 M/L Male	21	0690700000	H 0.5/14, 20 AWG, Orange	50	1609860000	WS 12/5 Multi Card	54
912127	RS-ELCO 38 M/R Male	21	<b>1000000000</b>			1609900000	WS 12/6 Multi Card	54
912128	RS-ELCO 38 M/L Female	21	1010000000	WPE 2.5	28	1614130000	SL 3.5/2/90 BK	44
912129	RS-ELCO 38 M/R Female	21	1010100000	WPE 4	28	1614160000	SL 3.5/2/90G BK	44
912131	RS-ELCO 56 M/L Male	21	1010200000	WPE 6	28	1614210000	SL 3.5/2/180 BK	44
912132	RS-ELCO 56 M/R Male	21	1010300000	WPE 10	28	1614240000	SL 3.5/2/180G BK	44
912133	RS-ELCO 56 M/L Female	21	1011000000	Single-level WSI 6	28	1615300000	SL 3.5/3/90 BK	44
912134	RS-ELCO 56 M/R Female	21	1011100000	WTR 2.5	28, 30	1615420000	SL 3.5/3/90G BK	44
915911	RI-IDC 10 70 mm	21	1011200000	WTR 2.5 with stb	28	1615670000	BL 3.5/2/180 BK	44
915912	RI-IDC 14 70 mm	21	1012200000	Single-level WSI 6, 24 VDC/60 VAC	28	1615680000	BL 3.5/3/180 BK	44
915913	RI-IDC 16 70 mm	21	1012300000	Single-level WSI 6, 48 VDC/120 VAC	28	1615930000	SL 3.5/3/180 BK	44
915914	RI-IDC 20 70 mm	21	1014000000	Single-level WSI 6/2	28	1616020000	SL 3.5/3/180G BK	44
915915	RI-IDC 26 70 mm	21	1014200000	Single-level WSI 6/2, 24 VDC/60 VAC	28	1616400000	ZSI 2.5	31
915916	RI-IDC 30 70 mm	21	1014300000	Single-level WSI 6/2, 48 VDC/120 VAC	28	1616430000	ZSI 2.5/LD 60 VAC	31
915917	RI-IDC 34 70 mm	21	1016700000	WTL 6/1 Lateral disconnect without StB socket	29	1616460000	ZSI 2.5/2	31
915918	RI-IDC 40 70 mm	21	1016900000	WTL 6/1 Lateral disconnect with StB socket	29	1623160000	BLZ 7.62/2/180 BK	45
915919	RI-IDC 50 70 mm	21	1017700000	WTL 6/2 Test plugs accept open type male leads	29	1623170000	BLZ 7.62/3/180 BK	45
915920	RI-IDC 60 70 mm	21	1018600000	WTL 6/3 Test plugs accept sheathed male leads	29	1623820000	SL 7.62/2/90 BK	45
915921	RI-IDC 64 70 mm	21				1623830000	SL 7.62/3/90 BK	45
915935	RD-9JS Male 70 mm	20	1020000000	WDU 2.5	28	1624700000	SL 7.62/2/180 BK	45
915936	RD-9JS Female 70 mm	20	1020100000	WDU 4	28	1624710000	SL 7.62/3/180 BK	45
915941	RD-15JS Male 70 mm	20	1020200000	WDU 6	28	1625550000	LP2N 5.08/6/90 OG	39
915942	RD-15JS Female 70 mm	20	1020300000	WDU 10	28	1625610000	BLZ 5.00/2/180 BK	45
915949	RD-25JS Male 70 mm	20	1020400000	WDU 16	28	1625620000	BLZ 5.00/3/180 BK	45
915953	RD-25JS Female 70 mm	20	1022300000	WDK 2.5 V	28	1625990000	SL 5.00/2/90 BK	45
915956	RD-37JS Male 70 mm	20	1024100000	WDU 2.5/TC, K	29	1626000000	SL 5.00/3/90 BK	45
915957	RD-37JS Female 70 mm	20	1024200000	WDU 2.5/TC, T	29	1626390000	SL 5.00/2/180 BK	45
919655	RD-50JS Female 70 mm	20	1024300000	WDU 2.5/TC, J	29	1626400000	SL 5.00/3/180 BK	45
919656	RD-50JS Male 70 mm	20	1024400000	WDU2.5/TC, S	29	1628030000	BLZ 7.50/2/180 BK	46
999789	TS 35 x 7.5 Aluminum 2m	35	1033300000	WDU 2.5/TC, E	29	1628040000	BLZ 7.50/3/180 BK	46
999716	TS 35 x 7.5 Aluminum 1m	35	1033700000	WDU 2.5/TC, B	29	1628690000	SL 7.50/2/90 BK	46
			1036300000	WDK 2.5 PE	28	1628700000	SL 7.50/3/90 BK	46
<b>60000000</b>			1040800000	WDU 2.5N	28	1629350000	SL 7.50/2/180 BK	46
67601545	QuickBloc PLC WDU-8 with Cable, Screw Terminals	22	1041600000	WDK 2.5 N	28, 30	1629360000	SL 7.50/3/180 BK	46
67601547	QuickBloc PLC WDU-16 with Cable, Screw Terminals	22	1041610000	WDK 2.5 NV	30	1632050000	ZDU 4	31
67601549	QuickBloc PLC ZKS-8 with Cable, Tension Clamp	22	1041900000	WDK 4 N	28, 30	1632080000	ZPE 4	31
67601550	QuickBloc PLC ZKS-16 with Cable, Tension Clamp	22	1041910000	WDK 4 NV	28, 30	1632090000	ZAP/ZDU 4	35
67602058	Cutfix 8 (120V)	52	1050000000	WAP/WDU 2.5-10	35	1632560000	LP2N 5.08/12/90 OG	39
			1051960000	WQV 4/2	35	1635150000	LP2N 5.08/4/90 OG	39
<b>20000000</b>			1052060000	WQV 4/10	35	1635740000	SLDF 5.08/2 BK	46
206160000	EWK 1/32 for TS 32	35	1053660000	WQV 2.5/2	35	1635750000	SLDF 5.08/3 BK	46
			1053760000	WQV 2.5/3	35	1636170000	LU 10.16/2/90 4 PIN GY	41
<b>38000000</b>			1054460000	WQV 2.5/10	35	1636180000	LU 10.16/3/90 4 PIN GY	41
383560000	EW 35 for TS 35	35	1054560000	WQV 4/3	35	1638780000	BL 3.5/2/90 BK	44
			1061200000	WEW 35/2 for TS 35	35	1638790000	BL 3.5/3/90 BK	44
			<b>1400000000</b>			1639700000	BL 3.5/2/270 BK	44
			1401760000	TOP 4GS 6.35/2/90 OG	41	1639710000	BL 3.5/3/270 BK	44
			1499510000	BLT 5.08/2/180 BK	45	1643810000	SL 3.5/2/135 BK	44
			1499610000	BLT 5.08/3/180 BK	45	1643820000	SL 3.5/3/135 BK	44
			<b>1500000000</b>			1644500000	SL 3.5/2/110 BK	44
			1512610000	SL 5.08/2/90 BK	45	1644510000	SL 3.5/3/110 BK	44
			1512710000	SL 5.08/3/90 BK	45	1646030000	BLL 5.08/2/90 BK	46
			1521810000	SL 5.08/2/180 BK	45	1646040000	BLL 5.08/3/90 BK	46
			1521910000	SL 5.08/3/180 BK	45	1646250000	BLL 5.08/2/180 BK	46
			1526410000	BLZ 5.08/2/180 BK	45	1646260000	BLL 5.08/3/180 BK	46
			1526510000	BLZ 5.08/3/180 BK	45	1648300000	LU 10.16/3/90 2 PIN GY	41
			1596330000	LP3R 5.08/9/90 OG	39	1648310000	LU 10.16/2/90 2 PIN GY	41
			1596350000	LP3R 5.08/12/90 OG	39	1650300000	TOP 4GS 6.35/3/90 OG	41
			1596370000	LP3R 5.08/15/90 OG	39	1650360000	ZVL 1.5/20 mini-terminal, Blue	33
			1596390000	LP3R 5.08/18/90 OG	39	1650370000	ZVL 1.5/20 mini-terminal, Brown	33
			1596410000	LP3R 5.08/24/90 OG	39	1651980000	ZIA 1.5/3L-1S 3-wire sensor	33
			1596470000	LP2N 5.08/8/90 OG	39	1652000000	ZIA 1.5/3L-PE 3-wire sensor w/ground	33
			1596500000	LP2N 5.08/10/90 OG	39	1652010000	ZIA 1.5/4L-1S 4-wire sensor	33
			1596520000	LP2N 5.08/16/90 OG	39	1652030000	ZIA 1.5/4L-PE 4-wire sensor w/ground	33
			<b>1600000000</b>			1653940000	LP3R 5.08/6/90 OG	39
			1608510000	ZDU 2.5	31	1669910000	SLZF 5.08/2/90B BK	46
			1608620000	ZDU 6	31	1669920000	SLZF 5.08/3/90B BK	46
			1608640000	ZPE 2.5	31	1671020000	BLZF 5.08/2/90 BK	46
			1608670000	ZPE 6	31	1671030000	BLZF 5.08/3/90 BK	46
			1608680000	ZTR 2.5	31	1671480000	BLZF 5.08/2/90B BK	46
						1671490000	BLZF 5.08/3/90B BK	46
						1672170000	BLZF 5.08/2/270 BK	46
						1672630000	BLZF 5.08/3/270 BK	46
						1672640000	BLZF 5.08/2/270B BK	46
						1673320000	SLZF 5.08/2/90 BK	46
						1673330000	SLZF 5.08/3/90 BK	46

Part No.	Description	Page No.	Part No.	Description	Page No.	Part No.	Description	Page No.
1674300000	ZDK 2.5	31	1712730000	HDC-KIT-HE 24.230	37	1760060000	SAI-8-M 3P IDC	26
1676740000	LP 5.08/2/135 BK	39	1715010000	LM 3.5/2/135 BK	40	1760490000	PM 5.08/2/90 OG	38
1676750000	LP 5.08/3/135 BK	39	1715050000	LM 3.5/3/135 BK	40	1760500000	PM 5.08/3/90 OG	38
1677220000	MF 10/6 Blank, White	54	1715250000	LM 5.00/2/90 BK	40	1760510000	PM 5.08/2/90 BK	38
1684000000	BLL 5.08/2/90B BK	46	1715260000	LM 5.00/3/90 BK	40	1760520000	PM 5.08/3/90 BK	38
1684010000	BLL 5.08/3/90B BK	46	1715270000	LM 5.00/2/180 BK	40	1760962001	SL-SMT 3.5/2/180LF BK	44
1684230000	BLL 5.08/2/180B BK	46	1715280000	LM 5.00/3/180 BK	40	1760972001	SL-SMT 3.5/3/180LF BK	44
1684240000	BLL 5.08/3/180B BK	46	1715290000	LM 5.00/2/135 BK	40	1761350000	LP 5.00/2/180 OG	39
1688260000	ZKBD 2.5/1/5	32	1715300000	LM 5.00/3/135 BK	40	1761360000	LP 5.00/3/180 OG	39
1688660000	SLZF 5.08/2/270 BK	46	1716020000	LM 5.08/2/90 BK	40	1761390000	LP 7.50/2/180 OG	39
1688670000	SLZF 5.08/3/270 BK	46	1716030000	LM 5.08/3/90 BK	40	1761400000	LP 7.50/3/180 OG	39
1689990000	ZDK 2.5/1.5V	31	1716040000	LM 5.08/2/180 BK	40	1761542001	SL-SMT 3.5/2/90G BK	44
1690420000	BLZF 3.5/2/180 BK	44	1716050000	LM 5.08/3/180 BK	40	1761544001	SL-SMT 3.5/2/90G BK	44
1690430000	BLZF 3.5/3/180 BK	44	1716060000	LM 5.08/2/135 BK	40	1761552001	SL-SMT 3.5/3/90G BK	44
1693800000	ZQV 2.5N/2	35	1716070000	LM 5.08/3/135 BK	40	1761554001	SL-SMT 3.5/3/90G BK	44
1693810000	ZQV 2.5N/3	35	1716470000	BL 5.08/2/180 BK	45	1762002001	SL-SMT 3.5/2/90LF BK	44
1693820000	ZQV 2.5N/4	35	1716480000	BL 5.08/3/180 BK	45	1762012001	SL-SMT 3.5/3/90LF BK	44
1693880000	ZQV 2.5N/10	35	1717900000	ZQV 2.5 N/2 (Jumper 2-pole red)	15	1762620000	ZQV 4N/4	35
1696040000	LP 5.08/2/90 BK	39	1718080000	ZQV 2.5 N/2 (Jumper 2-pole black)	15	1762630000	ZQV 4N/3	35
1696050000	LP 5.08/3/90 BK	39	1720000000	LM2N 3.5/4/90 BK	40	1763940000	WTR 2.5/S1	30
1696060000	LP 5.00/2/90 BK	39	1720010000	LM2N 3.5/6/90 BK	40	1764810000	LM2NZF 5.08/4/135 OG	40
1696070000	LP 5.00/3/90 BK	39	1720020000	LM2N 3.5/8/90 BK	40	1764820000	LM2NZF 5.08/6/135 OG	40
1696600000	BLZF 5.00/2/180 BK	45	1720030000	LM2N 3.5/10/90 BK	40	1764830000	LM2NZF 5.08/8/135 OG	40
1696610000	BLZF 5.00/3/180 BK	45	1720040000	LM2N 3.5/12/90 BK	40	1764840000	LM2NZF 5.08/10/135 OG	40
1697120000	LPP 5.08/2/90 BK	39	1720060000	LM2N 3.5/16/90 BK	40	1764850000	LM2NZF 5.08/12/135 OG	40
1697130000	LPP 5.08/3/135 BK	39	1720920000	ZDUA 2.5-2/15	33	1764870000	LM2NZF 5.08/16/135 OG	40
1697140000	LPP 5.00/2/90 BK	39	1721640000	LMZF 5.08/2/90 BK	40	1764910000	LM3RZF 5.08/6/135 OG	40
1697150000	LPP 5.00/3/90 BK	39	1721650000	LMZF 5.08/3/90 BK	40	1764920000	LM3RZF 5.08/9/135 OG	40
1697180000	LP 5.00/2/135 BK	39	1722400000	LMZF 5.08/2/180 BK	40	1764930000	LM3RZF 5.08/12/135 OG	40
1697190000	LP 5.00/3/135 BK	39	1722410000	LMZF 5.08/3/180 BK	40	1764940000	LM3RZF 5.08/15/135 OG	40
1697200000	LP 7.62/2/90 BK	39	1722720000	BLZF 7.62/2/180 BK	45	1764950000	LM3RZF 5.08/18/135 OG	40
1697210000	LP 7.62/3/90 BK	39	1722730000	BLZF 7.62/3/180 BK	45	1764960000	LM3RZF 5.08/24/135 OG	40
1697220000	LP 7.50/2/90 BK	39	1722940000	BLZF 7.50/2/180 BK	45	1766780000	SAI-4-M 4P IDC	26
1697230000	LP 7.50/3/90 BK	39	1722950000	BLZF 7.50/3/180 BK	45	1766800000	SAI-8-M 4P IDC	26
1697240000	LPP 7.62/2/90 BK	39	1724680000	LL 9.5/2/90 OG	41	1768000000	ZMAK	31
1697250000	LPP 7.62/3/90 BK	39	1724690000	LL 9.5/3/90 OG	41	1769800000	LM2N 5.08/4/90 BK	40
1697260000	LPP 7.50/2/90 BK	39	1724700000	LL 9.5/2/90 BK	41	1769909000	LM2N 5.08/6/90 BK	40
1697270000	LPP 7.50/3/90 BK	39	1724710000	LL 9.5/3/90 BK	41	1769100000	LM2N 5.08/8/90 BK	40
1697280000	LP 7.62/2/135 BK	39	1726210000	TOP 1.5GS 7.62/3/90 OG	41	1769110000	LM2N 5.08/10/90 BK	40
1697290000	LP 7.62/3/135 BK	39	1727640000	B2L 3.5/6/180 BK tin-plated	43	1769120000	LM2N 5.08/12/90 BK	40
1697300000	LP 7.50/2/135 BK	39	1727650000	B2L 3.5/8/180 BK tin-plated	43	1769140000	LM2N 5.08/16/90 BK	40
1697310000	LP 7.50/3/135 BK	39	1727990000	S2L 3.5/6/90G BK tin-plated	43	1769930000	LM3R 5.08/6/90 BK	40
1697610000	ZKSD 2.5/1.5	32	1728000000	S2L 3.5/8/90G BK tin-plated	43	1769940000	LM3R 5.08/9/90 BK	40
1698160000	ZRV 1.5	32	1728310000	S2L 3.5/6/90 BK tin-plated	43	1769950000	LM3R 5.08/12/90 BK	40
1699600000	ZDKB	32	1728320000	S2L 3.5/8/90 BK tin-plated	43	1769960000	LM3R 5.08/15/90 BK	40
1699611111	ZDKS	32	1728630000	S2L 3.5/6/90F BK tin-plated	43	1769970000	LM3R 5.08/18/90 BK	40
1699670000	LM 3.5/2/90 BK	40	1728640000	S2L 3.5/8/90F BK tin-plated	43	1769990000	LM3R 5.08/24/90 BK	40
1699680000	LM 3.5/3/90 BK	40	1728950000	S2L 3.5/6/180G BK tin-plated	43	1770370000	ZDU 4-2	32
			1728960000	S2L 3.5/8/180G BK tin-plated	43	1770380000	ZPE 4-2	32
<b>1700000000</b>			1729270000	S2L 3.5/6/180 BK tin-plated	43	1770670000	BLIDCB 3.5/2 Bus BK	44
1701230000	SAI-4-M 5P M12	26	1729280000	S2L 3.5/8/180 BK tin-plated	43	1770680000	BLIDCB 3.5/3 Bus BK	44
1701233000	SAI-4 MHD 5P M12	26	1729590000	S2L 3.5/6/180F BK tin-plated	43	1770940000	BLIDC 3.5/2 BK	44
1701250000	SAI-8-M 5P M12	25	1729600000	S2L 3.5/8/180F BK tin-plated	43	1770950000	BLIDC 3.5/3 BK	44
1701253000	SAI-8 MHD 5P M12	25	1730700000	BL 5.00/2/180 BK	45	1771800000	ZTL 6/STB	32
1701900000	BLZ 7.50/2/90 BK	46	1730710000	BL 5.00/3/180 BK	45	1771810000	ZTD 6	32
1701910000	BLZ 7.50/3/90 BK	46	1734220000	LMZF 5.08/2/135 BK	40	1772060000	ZDU 2.5-2	32
1702340000	BLZ 7.50/2/270 BK	46	1734230000	LMZF 5.08/3/135 BK	40	1774762001	SL-SMT 5.08/2/90 BK	44
1702350000	BLZ 7.50/3/270 BK	46	1742620000	ZKB 1.5	32	1774764001	SL-SMT 5.08/2/90 BK	44
1702780000	BLZ 7.62/2/90 BK	46	1745400000	ZDTR 2.5	31	1774772001	SL-SMT 5.08/3/90 BK	44
1702790000	BLZ 7.62/3/90 BK	46	1746750000	ZDU 10	31	1774774001	SL-SMT 5.08/3/90 BK	44
1703220000	BLZ 7.62/2/270 BK	46	1748170000	B2L 3.5/6/180F BK tin-plated	43	1775002001	SL-SMT 5.08/2/90G BK	44
1703230000	BLZ 7.62/3/270 BK	46	1748180000	B2L 3.5/8/180F BK tin-plated	43	1775012001	SL-SMT 5.08/3/90G BK	44
1704350000	ZDUB 2.5-2/2AN/DM	33	1748450000	B2L 3.5/8/180L BK tin-plated	43	1775232001	SL-SMT 5.08/2/90LF BK	44
1704500000	ZDUB 2.5-2/2AN/DB with mount tab	33	1748490000	B2L 3.5/6/180L BK tin-plated	43	1775242001	SL-SMT 5.08/3/90LF BK	44
1705920000	SAI-4-M 4P M12	26	1751780000	TOP 4GS 7.62/2/90 BK	41	1775480000	ZDU 1.5	32
1705923000	SAI-4 MHD 4P M12	25	1752982001	SL-SMT 3.5/2/180G BK	44	1775522001	SL-SMT 5.08/2/180 BK	44
1705940000	SAI-8-M 4P M12	26	1752992001	SL-SMT 3.5/3/180G BK	44	1775530000	ZDU 1.5/3AN	32
1705943000	SAI-8 MHD 4P M12	25	1753280000	WDU 1.5/R3.5/15	28	1775572001	SL-SMT 5.08/3/180 BK	44
1706090000	ZPE 2.5-2	32	1753290000	WDK 1.5/R3.5/15	28	1775580000	ZDU 1.5/4AN	32
1706370000	SLZF 5.08/2/270B BK	46	1753830000	LP 5.08/2/180 BK	39	1775922001	SL-SMT 5.08/2/180G BK	44
1706380000	SLZF 5.08/3/270B BK	46	1753840000	LP 5.08/3/180 BK	39	1775932001	SL-SMT 5.08/3/180G BK	44
1707690000	BLZF 5.08/2/180 BK	46	1753910000	LP 7.62/2/180 BK	39	1776362001	SL-SMT 5.08/2/180LF BK	44
1707700000	BLZF 5.08/3/180 BK	46	1753920000	LP 7.62/3/180 BK	39	1776372001	SL-SMT 5.08/3/180LF BK	44
1708530000	BLZF 5.08/2/180B BK	46	1754960000	WTL 4 Test disconnect terminal with StB socket	29	1779870000	BL-I/O 3.5/10/180FP BK	45
1708540000	BLZF 5.08/3/180B BK	46		WTL 4 Test disconnect terminal without StB socket	29	1779880000	BL-I/O 3.5/10/180F BK	45
1709600000	SLZF 5.08/2/180 BK	46	1754970000			1779910000	BL-I/O 3.5/30/180FP BK	45
1709610000	SLZF 5.08/3/180 BK	46				1779920000	BL-I/O 3.5/30/180F BK	45
1710440000	SLZF 5.08/2/180B BK	46	1755190000	LPTR 5.08/1/90 BK	39	1783510000	SAI-8 MMS 5P M12	25
1710450000	SLZF 5.08/3/180B BK	46	1755520000	S2L 3.5/6/90G BK gold-plated	43	1783520000	SAI-4 MMS 5P M12	25
1711960000	BLC 5.08/2/180R BK	45	1755530000	S2L 3.5/8/90G BK gold-plated	43	1783530000	SAI-8 MMS 4P M12	25
1711970000	BLC 5.08/3/180R BK	45	1755680000	S2L 3.5/6/180 BK gold-plated	43	1783540000	SAI-4 MMS 4P M12	25
1712460000	HDC-KIT-HE 06.100	37	1756810000	S2L 3.5/8/180 BK gold-plated	43	1783660000	LX 15.00/1/90 GY	42
1712510000	HDC-KIT-HE 10.110	37	1757390000	B2L 3.5/6/180 BK gold-plated	43	1783670000	LX 15.00/2/90 GY	42
1712520000	HDC-KIT-HE 16.120	37	1757400000	B2L 3.5/8/180 BK gold-plated	43	1783680000	LX 15.00/3/90 GY	42
1712530000	HDC-KIT-HE 24.130	37	1758250000	ZQV 4N/2	35	1783690000	LX 15.00/4/90 GY	42
1712540000	HDC-KIT-HE 32.150	37	1758260000	ZQV 4N/10	35	1783700000	LXBL 15.00/1/90 GY	42
1712550000	HDC-KIT-HE 48.150	37	1759390000	BLIDC 5.08/2 BK	45	1783710000	LXB 15.00/2/90 GY	42
1712660000	HDC-KIT-HE 06.101	37	1759400000	BLIDC 5.08/3 BK	45	1783720000	LXB 15.00/3/90 GY	42
1712670000	HDC-KIT-HE 10.111	37	1760040000	SAI-4-M 3P IDC	26	1783730000	LXB 15.00/4/90 GY	42
1712680000	HDC-KIT-HE 16.121	37						
1712690000	HDC-KIT-HE 24.131	37						
1712700000	HDC-KIT-HE 06.200	37						
1712710000	HDC-KIT-HE 10.210	37						
1712720000	HDC-KIT-HE 16.220	37						

More products are available than shown.  
Please contact us or visit our website: [www.weidmuller.com](http://www.weidmuller.com) 59

**INDEX (NUMERIC)**

Part No.	Description	Page No.	Part No.	Description	Page No.	Part No.	Description	Page No.
1783790000	DLD Multiple-level sensor terminal blocks	30	<b>8300000000</b>			<b>8800000000</b>		
1783820000	DLI Multiple-level sensor terminal blocks	30	8324590000	MCZ TO (Time Off Delay) 50 ms	14	8870871000	CP-SNT3, 500W, 24VDC 20A	17
1784270000	ZQV 2.5 N/4-2 SW (Jumper 2-pole black)	13	8365980000	MCZ R 24 VDC (Relay)	12			
1784280000	ZQV 2.5 N/4-2 RT (Jumper 2-pole red)	13	8389030000	AP MCZ 1.5 (End Plate)	12, 14, 18	<b>9000000000</b>		
1785590000	TOP 1.5GS 5.08/2/90 OG	41				9001080000	AM 35	48
1785600000	TOP 1.5GS 5.08/3/90 OG	41	<b>8400000000</b>			9001090000	KT 36	47
1785700000	TOP 1.5GS 5.08/2/180 BK	41	8420880000	MCZ R 120 VAC (Relay)	12	9001540000	AM 25	48
1785710000	TOP 1.5GS 5.08/3/90 BK	41	8421060000	MCZ O 120 VAC/DC (Optocoupler)	12	9002000000	KT 45	47
1785810000	TOP 1.5GS 5.08/2/180 OG	41	8432300000	WTS4 THERMO SELECT	15	9002650000	KT 8	47
1785820000	TOP 1.5GS 5.08/3/180 OG	41	8444950000	WAS5 CCC LP, 0(4)...20 mA / 0(4)...20 mA	15	9005000000	stripax	48
1785920000	TOP 1.5GS 5.08/2/180 BK	41	8447280000	WAS5 CVC HF, 4...20 mA / 0...10 V, 20 kHz	15	9005610000	stripax 16	48
1785930000	TOP 1.5GS 5.08/3/180 BK	41	8447340000	WAS5 VCC HF, 0...10 V / 4...20 mA, 20 kHz	15	9008370000	SDI	52
1786110000	TOP 4GS 6.35/2/90 BK	41	8448920000	MCZ OVP CL, 24 VDC, 0.5 A	18	9008380000	SDI	52
1786190000	TOP 4GS 6.35/2/180 OG	41	8448940000	MCZ OVP SL, 24 VDC, 0.5 A	18	9008390000	SDI	52
1786200000	TOP 4GS 6.35/3/180 OG	41	8448960000	MCZ OVP CL, 24 VAC, 1.25 A	18	9008400000	SDI	52
1786300000	TOP 4GS 6.35/2/180 BK	41	8448970000	MCZ OVP SL, 24 VAC, 1.25 A	18	9008410000	SDI	52
1786310000	TOP 4GS 6.35/3/180 BK	41	8449000000	MCZ OVP CL, 48 VAC/DC, 0.5 A	18	9008420000	SDI	52
1786460000	TOP 4GS 7.62/3/90 BK	41	8449030000	MCZ OVP SL, 48 VAC/DC, 0.5 A	18	9008430000	SDI	52
1786590000	TOP 4GS 7.62/2/180 BK	41	8449040000	MCZ OVP CL, 48 VAC/DC, 1.25 A	18	9008910000	SDI	52
1786600000	TOP 4GS 7.62/3/180 BK	41	8449050000	MCZ OVP SL, 48 VAC/DC, 1.25 A	18	9011460000	PZ 6/5	49
1789080000	BL-I/O 3.5/10/180FP LED BK	45	8449060000	MCZ OVP CL, 115 VAC/DC, 1.25 A	18	9012500000	PZ 4	49
1789090000	BL-I/O 3.5/10/180F LED BK	45	8449070000	MCZ OVP SL, 115 VAC/DC, 1.25 A	18	9013260000	HTF SUB-D	50
1789100000	BL-I/O 3.5/30/180FP LED BK	45	8449080000	MCZ OVP CL, 230 VAC/DC, 1.25 A	18	9013530000	MTF SUB-HD	50
1789110000	BL-I/O 3.5/30/180F LED BK	45	8449090000	MCZ OVP SL, 230 VAC/DC, 1.25 A	18	9014350000	PZ 6 roto	49
1792540000	IDU 1.5N	34	8449130000	MCZ OVP discharge tube type 90 V	18	9017500000	MTR 35	50
1792560000	IPE 1.5N	34	8449140000	MCZ OVP Varistor 30 V	18	9018020000	MTF 110	50
1792570000	IDU 1.5N/3AN	34	8449150000	MCZ OVP TAZ unipolar 24 V	18	9019160000	H 2.5/14, 14 AWG, Blue	50
1792600000	IDU 1.5B/4AN	34	8449160000	MCZ OVP TAZ bipolar 24 V	18	9020000000	stripax plus 2.5	49
1792630000	ITR 1.5N	34	8461470000	MCZ VFC 0...10 V input/freq out	14	9025290000	Crimpfix L	52
1792640000	ISI 1.5	34	8461490000	MCZ VFC 4...20 mA input	14	9025970000	H 1,0/145, 18 AWG, Yellow	50
1792700000	IDU 1.5N/ZF Tension/IDC	34		(loop powered)/freq out	14	9050180000	Powerstripper 6.0	52
1792730000	IDU 1.5N/ZB Screw/IDC	34	8472880000	MCZ OVP CL, 24 VAC, 0.5 A	18			
1793950000	ZQV 4 N/2 RT (Jumper 2-pole red)	13				<b>9100000000</b>		
1793970000	ZQV 4 N/2 SW (Jumper 2-pole black)	13	<b>8500000000</b>			9119970000	WDK 2.5 LD with LED (6 VDC)	28
<b>1800000000</b>			8513330000	WAS2 CMA 40/50/50 A AC/DC, Analog Output	15			
1812900000	IDU 2.5N	34	8513340000	WAS2 CMR 20/40/60 A AC, Relay Output	15	<b>9400000000</b>		
1812920000	IPE 2.5N	34	8516560000	WAS2 CMR 1/5/10 A AC, Relay Output	15	9456190000	SAI-4-F 4P PUR 5M	26
1812930000	IDU 2.5N/3AN/ZB	34	8523400000	WAS1 CMA 1/5/10 A AC, Analog Output	15	9456230000	SAI-4-F 4P PUR 20M	26
1812960000	IDU 2.5N/4AN/ZB	34	8526610000	WAS2 CMA 5/10 A AC/DC, Analog Output	15	9456330000	SAI-4-F 5P PUR 5M	26
1812990000	ITR 2.5N	34	8528650000	WAS1 LP CMA 1/5/10 A AC, Analog Output, Loop Powered	15	9456370000	SAI-4-F 5P PUR 20M	26
1813010000	ISI 2.5N	34	8530620000	PRS 24 VDC LD 1 CO (SPDT)	13	9456750000	SAI-8-F 4P PUR 5M	26
1821290000	IDC 2.5N/ZB Screw/IDC	34	8530630000	PRS 24 VDC LD 2 CO (DPDT)	13	9456790000	SAI-8-F 4P PUR 20M	26
1858980000	PrintJet II Printer	56	8530640000	PRS 120 VAC LD 1 CO (SPDT)	13	9456890000	SAI-8-F 5P PUR 5M	26
			8530660000	PRS 120 VAC LD 2 CO (DPDT)	13	9456930000	SAI-8-F 5P PUR 20M	26
			8530670000	PRS 230 VAC LD 1 CO (SPDT)	13			
<b>7900000000</b>			8530680000	PRS 230 VAC LD 2 CO (DPDT)	13	<b>9500000000</b>		
7904180000	ZPE 2.5/3AN	31	8530690000	PRS 230 VAC LD 1 CO (SPDT)	13	9503310000	Fuse/Feed Through KDKS 1/35	28
7910180000	WTR 4	30	8530700000	PRZ 24 VDC LD 1 CO (SPDT)	13	9532440000	KDKS 1 Fuse with feed-through terminal block	30
7910240000	WTR 4/S1	30	8530710000	PRZ 24 VDC LD 2 CO (DPDT)	13			
7910700000	MAK 2.5 Triple-level terminal block with ground	30	8530720000	PRZ 120 VAC LD 1 CO (SPDT)	13	9540000000	ZEW 35 for TS 35	35
7920080000	ZQV 16/10	35	8530730000	PRZ 120 VAC LD 2 CO (DPDT)	13			
7920100000	ZQV 35/10	35	8530740000	PRZ 230 VAC LD 1 CO (SPDT)	13	<b>9900000000</b>		
7920120000	ZQV 35/16	35	8533640000	MRS 24 VDC 1 CO (SPDT)	13	9909030000	PROPORT AC PLUG +9 PIN DSUB	27
7920340000	ZEW 15 for TS 15	35	8533660000	MRZ 24 VDC 1 CO (SPDT)	13	9909040000	PROPORT AC PLUG +15 PIN DSUB	27
7940000036	AC Outlet Module w/ GFI	24	8540180000	WAS5 CCC, 0(4)...20 mA / 0(4)...mA, 3-port isolation	15	9909060000	PROPORT AC PLUG +25 PIN DSUB	27
						9910550000	PROPORT 8-PIN RJ45 AC	27
<b>8000000000</b>			8540230000	WAS5 CVC 4...20 mA / 0...10 V, 3-port isolation	15	9910560000	PROPORT 9-PIN DSUB AC	27
8025610000	WDK 2.5 D with Diode	28	8540260000	WAZ5 CCC, 0...20 mA / 4...20 mA, 3-port isolation	15	9910670000	PROPORT AC +9 PIN DSUB	27
						9915480000	RS Simplex 120 V Single Outlet	24
<b>8100000000</b>						9915490000	RS Duplex 120 V Dual Outlet	24
8155550000	RI-IDC 64 45 mm	21	8540290000	WAS5 VCC 0...10 V / 4...20 mA, 3-port isolation	15	9916030000	PROPORT 1 X RJ45	27
8155570000	RI-IDC 50 45 mm	21	8545830000	WAS CMA 20/25/30 A AC/DC, Analog Output	15	9916200000	PROPORT AC +5A CIRCUIT BREAK	27
8155580000	RI-IDC 40 45 mm	21				9918370000	DMS-M	52
8155590000	RI-IDC 34 45 mm	21	8556020000	MRS 230 VAC 1 CO (SPDT)	13	9918390000	DMSI-M	52
8155600000	RI-IDC 20 45 mm	21	8556030000	MRS 120 VAC/DC 1 CO (SPDT)	13	9954140000	GSE 10/2/180 GY	42
8155610000	RI-IDC 10 45 mm	21	8556090000	MRZ 230 VAC 1 CO (SPDT)	13	9954150000	GSE 10/4/180 GY	42
8155620000	RD-25JS GRD Female 45 mm	20	8556100000	MRZ 120 VAC/DC 1 CO (SPDT)	13	9954160000	GSE 10/6/180 GY	42
8155630000	RD-37JS GRD Female 45 mm	20	8560700000	WAS5 PRO RTD	15	9954170000	GSE 10/8/180 GY	42
8155640000	RD-50JS GRD Female 45 mm	20	8560720000	WAS5 PRO Thermo	15	9954180000	GSE 10/10/180 GY	42
8155650000	RD-25JS GRD Male 45 mm	20	8560740000	WAS4 PRO DC/DC	15	9958360000	GSE 10/5/180 GY	42
8155660000	RD-37JS GRD Male 45 mm	20				9958370000	GSE 10/7/180 GY	42
8155670000	RD-50JS GRD Male 45 mm	20	<b>8600000000</b>			9958380000	GSE 10/9/180 GY	42
			8618890000	WGS, 24VDC, 1.6A	17			
<b>8200000000</b>			8618910000	WGS, 24VDC, 3.15A	17			
8209730000	RD-15JS GRD Female 45 mm	20	8618930000	WGS, 24VDC, 6.3A	17			
8213470000	RI-IDC 26 45 mm	21	8618940000	WGS, 24VDC, 8A	17			
8216480000	RD-9JS GRD Female 45 mm	20	8621010000	WGZ, 24VDC, 8A	17			
8227350000	MCZ SC 0.5...20 mA input threshold monitor	14	8621020000	WGZ, 24VDC, 6.3A	17			
8233350000	RD-15JS GRD Male 45 mm	20	8621030000	WGZ, 24VDC, 3.15A	17			
8258980000	RI-IDC 14 45 mm	21	8621040000	WGZ, 24VDC, 1.6A	17			
8259000000	RI-IDC 60 45 mm	21				<b>8700000000</b>		
8259010000	RD-9JS GRD Male 45 mm	20	8708660000	CP-SNT, 70W, 24VDC 3A	16	8708670000	CP-SNT, 120W, 24VDC 5A	16
8260280000	MCZ SC 0...10 V input threshold monitor	14	8708680000	CP-SNT, 250W, 24VDC 10A	16	8708700000	CP-SNT3, 250W, 24VDC 10A	17
8265540000	RI-IDC 16 45 mm	21	8708730000	CP-SNT3, 1000W, 24VDC 40A	17	8708730000	CP-SNT3, 1000W, 24VDC 40A	17
8287730000	MCZ O 24 VAC/DC 2 A (Optocoupler)	12	8710620000	CP DM 10 24VDC, 10A	17	8710620000	CP DM 10 24VDC, 10A	17
			8768650000	CP DM 20 24VDC, 20A	17	8768650000	CP DM 20 24VDC, 20A	17
			8778870000	CP-SNT, 500W, 24VDC, 20A	16			



# Index (Alphabetical)

Description	Part No.	Page No.	Description	Part No.	Page No.	Description	Part No.	Page No.
<b>Weidmuller Product Overview Index (Alphabetical)</b>								
<b>A</b>			BLZF 7.62/2/180 BK 1722720000 45					
AC Outlet Module w/ GFI	7940000036	24	BLZF 7.62/3/180 BK 1722730000 45					
AM 25	9001540000	48	<b>C</b>					
AM 35	9001080000	48	CP DM 10 24VDC, 10A	8710620000	17	ISI 1.5	1792640000	34
AP MCZ 1.5 (End Plate)	8389030000	12, 14, 18	CP DM 20 24VDC, 20A	8768650000	17	ISI 2.5N	1813010000	34
<b>B</b>			CP-SNT, 120W, 24VDC 5A	8708670000	16	ITR 1.5N	1792630000	34
B2L 3.5/6/180 BK gold-plated	1757390000	43	CP-SNT, 250W, 24VDC 10A	8708680000	16	ITR 2.5N	1812990000	34
B2L 3.5/6/180 BK tin-plated	1727640000	43	CP-SNT, 500W, 24VDC, 20A	8778870000	17	<b>K</b>		
B2L 3.5/6/180F BK tin-plated	1748170000	43	CP-SNT, 70W, 24VDC 3A	8708660000	16	KDKS 1 Fuse with feed-through terminal block	9532440000	30
B2L 3.5/6/180LH BK tin-plated	1748490000	43	CP-SNT3, 1000W, 24VDC 40A	8708730000	17	KT 36	9001090000	47
B2L 3.5/8/180 BK gold-plated	1757400000	43	CP-SNT3, 250W, 24VDC 10A	8708700000	17	KT 45	9002000000	47
B2L 3.5/8/180 BK tin-plated	1727650000	43	CP-SNT3, 500W, 24VDC 20A	8870871000	17	KT 8	9002650000	47
B2L 3.5/8/180F BK tin-plated	1748180000	43	Crimpfix L	9025290000	52	<b>L</b>		
B2L 3.5/8/180LH BK tin-plated	1748450000	43	Cutfix 8 (120V)	67602058	52	LL 9.5/2/90 BK	1724700000	41
BL 3.5/2/180 BK	1615670000	44	<b>D</b>					
BL 3.5/2/270 BK	1639700000	44	Dekafix FS 5, MKD 1-50	473560001	54	LL 9.5/2/90 OG	1724680000	41
BL 3.5/2/90 BK	1638780000	44	Dekafix FS 6, MKD 1-50	468760001	54	LL 9.5/3/90 BK	1724710000	41
BL 3.5/3/180 BK	1615680000	44	Dekafix FW 5, MKD 1-50	473460001	54	LL 9.5/3/90 OG	1724690000	41
BL 3.5/3/270 BK	1639710000	44	DLI Multiple-level sensor terminal blocks	1783790000	30	LM 3.5/2/135 BK	1715010000	40
BL 3.5/3/90 BK	1638790000	44	DLI Multiple-level sensor terminal blocks	1783820000	30	LM 3.5/2/90 BK	1699670000	40
BL 5.00/2/180 BK	1730700000	45	DMS-M	9918370000	52	LM 3.5/3/135 BK	1715050000	40
BL 5.00/3/180 BK	1730710000	45	DMSI-M	9918390000	52	LM 3.5/3/90 BK	1699680000	40
BL 5.08/2/180 BK	1716470000	45	<b>E</b>					
BL 5.08/3/180 BK	1716480000	45	EW 35 for TS 35	383560000	35	LM 5.00/2/135 BK	1715290000	40
BL-I/O 3.5/10/180F BK	1779880000	45	EWK 1/32 for TS 32	206160000	35	LM 5.00/2/90 BK	1715260000	40
BL-I/O 3.5/10/180F LED BK	1789090000	45	<b>F</b>					
BL-I/O 3.5/10/180FP BK	1779870000	45	Fuse/Feed Through KDKS 1/35	9503310000	28	LM 5.08/2/180 BK	1716040000	40
BL-I/O 3.5/10/180FP LED BK	1789080000	45	<b>G</b>					
BL-I/O 3.5/30/180F BK	1779920000	45	GSE 10/10/180 GY	9954180000	42	LM 5.08/2/90 BK	1716020000	40
BL-I/O 3.5/30/180F LED BK	1779910000	45	GSE 10/2/180 GY	9954140000	42	LM 5.08/3/135 BK	1716070000	40
BL-I/O 3.5/30/180FP BK	1779910000	45	GSE 10/3/180 GY	0478900000	42	LM 5.08/3/90 BK	1716050000	40
BL-I/O 3.5/30/180FP LED BK	1779910000	45	GSE 10/4/180 GY	9954150000	42	LM 5.08/3/135 BK	1716030000	40
BLC 5.08/2/180R BK	1711960000	45	GSE 10/5/180 GY	9953640000	42	LM2N 3.5/10/90 BK	1720030000	40
BLC 5.08/3/180R BK	1711970000	45	GSE 10/6/180 GY	9954160000	42	LM2N 3.5/12/90 BK	1720040000	40
BLIDC 3.5/2 BK	1770940000	44	GSE 10/7/180 GY	9958370000	42	LM2N 3.5/16/90 BK	1720060000	40
BLIDC 3.5/3 BK	1770950000	44	GSE 10/8/180 GY	9954170000	42	LM2N 3.5/4/90 BK	1720000000	40
BLIDC 5.08/2 BK	1759390000	45	GSE 10/9/180 GY	9953800000	42	LM2N 3.5/6/90 BK	1720010000	40
BLIDC 5.08/3 BK	1759400000	45	GSF5/2/180 OG	0490860000	42	LM2N 3.5/8/90 BK	1720020000	40
BLIDCB 3.5/2 Bus BK	1770670000	44	GSF5/2/90 OG	0496760000	42	LM2N 5.08/10/90 BK	1769110000	40
BLIDCB 3.5/3 Bus BK	1770680000	44	GSF5/3/180 OG	0490960000	42	LM2N 5.08/12/90 BK	1769120000	40
BLL 5.08/2/180 BK	1646250000	46	GSF5/3/90 OG	0496860000	42	LM2N 5.08/16/90 BK	1769140000	40
BLL 5.08/2/180B BK	1684230000	46	<b>H</b>					
BLL 5.08/2/90 BK	1646030000	46	H 0.5/14, 20 AWG, Orange	0690700000	50	LM2N 5.08/18/90 BK	1769080000	40
BLL 5.08/2/90B BK	1684000000	46	H 0.75/14, 18 AWG, White	0462900000	50	LM2N 5.08/24/90 BK	1769090000	40
BLL 5.08/3/180 BK	1646260000	46	H 1.0/145, 18 AWG, Yellow	9025970000	50	LM2N 5.08/8/135 OG	1764830000	40
BLL 5.08/3/180B BK	1684240000	46	H 1.5/14, 16 AWG, Red	0463100000	50	LM3R 5.08/12/90 BK	1769950000	40
BLL 5.08/3/90 BK	1646040000	46	H 1/14, 18 AWG, Yellow	0463000000	50	LM3R 5.08/15/90 BK	1769960000	40
BLL 5.08/3/90B BK	1684010000	46	H 2.5/14, 14 AWG, Blue	9019160000	50	LM3R 5.08/18/90 BK	1769970000	40
BLT 5.08/2/180 BK	1499510000	45	HDC-KIT-HE 06.100	1712460000	37	LM3R 5.08/24/90 BK	1769990000	40
BLT 5.08/3/180 BK	1499610000	45	HDC-KIT-HE 06.101	1712660000	37	LM3R 5.08/6/90 BK	1769930000	40
BLZ 5.00/2/180 BK	1625610000	45	HDC-KIT-HE 06.200	1712700000	37	LM3R 5.08/9/90 BK	1769940000	40
BLZ 5.00/3/180 BK	1625620000	45	HDC-KIT-HE 10.110	1712510000	37	LM3RZF 5.08/12/135 OG	1764930000	40
BLZ 5.08/2/180 BK	1526410000	45	HDC-KIT-HE 10.111	1712670000	37	LM3RZF 5.08/15/135 OG	1764940000	40
BLZ 5.08/3/180 BK	1526510000	45	HDC-KIT-HE 10.210	1712710000	37	LM3RZF 5.08/18/135 OG	1764950000	40
BLZ 7.50/2/180 BK	1628030000	46	HDC-KIT-HE 16.120	1712520000	37	LM3RZF 5.08/24/135 OG	1764960000	40
BLZ 7.50/2/270 BK	1702340000	46	HDC-KIT-HE 16.121	1712680000	37	LM3RZF 5.08/6/135 OG	1764910000	40
BLZ 7.50/2/90 BK	1701900000	46	HDC-KIT-HE 16.220	1712720000	37	LM3RZF 5.08/9/135 OG	1764920000	40
BLZ 7.50/3/180 BK	1628040000	46	HDC-KIT-HE 24.130	1712530000	37	LMZF 5.08/2/135 BK	1734220000	40
BLZ 7.50/3/270 BK	1702350000	46	HDC-KIT-HE 24.131	1712690000	37	LMZF 5.08/2/180 BK	1722400000	40
BLZ 7.50/3/90 BK	1701910000	46	HDC-KIT-HE 24.230	1712730000	37	LMZF 5.08/2/90 BK	1721640000	40
BLZ 7.62/2/180 BK	1623160000	46	HDC-KIT-HE 32.150	1712540000	37	LMZF 5.08/3/135 BK	1734230000	40
BLZ 7.62/2/270 BK	1623200000	46	HDC-KIT-HE 48.150	1712550000	37	LMZF 5.08/3/180 BK	1722410000	40
BLZ 7.62/2/90 BK	1702780000	46	HTF SUB-D	9013260000	50	LMZF 5.08/3/90 BK	1721650000	40
BLZ 7.62/3/180 BK	1623170000	46	<b>I</b>					
BLZ 7.62/3/270 BK	1703230000	46	IDC 2.5N/ZB Screw/IDC	1821290000	34	LP 5.00/2/135 BK	1697180000	39
BLZ 7.62/3/90 BK	1702790000	46	IDU 1.5N	1792540000	34	LP 5.00/2/180 OG	1761350000	39
BLZF 3.5/2/180 BK	1690420000	44	IDU 1.5N/3AN	1792570000	34	LP 5.00/3/135 BK	1696060000	39
BLZF 3.5/3/180 BK	1690430000	44	IDU 1.5N/4AN	1792500000	34	LP 5.00/3/180 OG	1697190000	39
BLZF 5.00/2/180 BK	1696600000	45	IDU 1.5N/ZB Screw/IDC	1792730000	34	LP 5.00/3/90 BK	1761360000	39
BLZF 5.00/3/180 BK	1696610000	45	IDU 1.5N/ZF Tension/IDC	1792700000	34	LP 5.00/2/90 BK	1696070000	39
BLZF 5.08/2/180 BK	1707690000	46	IDU 2.5N	1812900000	34	LP 5.08/2/135 BK	1676740000	39
BLZF 5.08/2/180B BK	1708530000	46	IDU 2.5N/3AN/ZB	1812930000	34	LP 5.08/2/180 BK	1753830000	39
BLZF 5.08/2/270 BK	1672170000	46	IDU 2.5N/4AN/ZB	1812960000	34	LP 5.08/2/90 BK	1696040000	39
BLZF 5.08/2/270B BK	1672630000	46	IPE 1.5N	1792560000	34	LP 5.08/3/135 BK	1676750000	39
BLZF 5.08/2/90 BK	1671200000	46	IPE 2.5N	1812920000	34	LP 5.08/3/180 BK	1753840000	39
BLZF 5.08/2/90B BK	1671480000	46						
BLZF 5.08/3/180 BK	1707700000	46						
BLZF 5.08/3/180B BK	1708540000	46						
BLZF 5.08/3/270 BK	1672180000	46						
BLZF 5.08/3/270B BK	1672640000	46						
BLZF 5.08/3/90 BK	1671030000	46						
BLZF 5.08/3/90B BK	1671490000	46						
BLZF 7.50/2/180 BK	1722940000	45						
BLZF 7.50/3/180 BK	1722950000	45						

More products are available than shown. Please contact us or visit our website: [www.weidmuller.com](http://www.weidmuller.com). 61

**INDEX (ALPHABETICAL)**

Description	Part No.	Page No.	Description	Part No.	Page No.	Description	Part No.	Page No.
LP 7.50/2/180 OG	1761390000	39	<b>P</b>			<b>S</b>		
LP 7.50/2/90 BK	1697220000	39	PM 5.08/2/90 BK	1760510000	38	S2L 3.5/6/180 BK gold-plated	1756800000	43
LP 7.50/3/135 BK	1697310000	39	PM 5.08/2/90 OG	1760490000	38	S2L 3.5/6/180 BK tin-plated	1729270000	43
LP 7.50/3/180 OG	1761400000	39	PM 5.08/3/90 BK	1760520000	38	S2L 3.5/6/180F BK tin-plated	1729590000	43
LP 7.50/3/90 BK	1697230000	39	PM 5.08/3/90 OG	1760530000	38	S2L 3.5/6/180G BK tin-plated	1728950000	43
LP 7.62/2/135 BK	1697280000	39	Powerstripper 6.0	9050180000	52	S2L 3.5/6/90 BK tin-plated	1728310000	43
LP 7.62/2/180 BK	1753910000	39	PrintJet II Printer	1858980000	56	S2L 3.5/6/90F BK tin-plated	1728630000	43
LP 7.62/2/90 BK	1697200000	39	PROPORT 1 X RJ45	9916030000	27	S2L 3.5/6/90G BK gold-plated	1755520000	43
LP 7.62/3/135 BK	1697290000	39	PROPORT 8-PIN RJ45 AC	9910550000	27	S2L 3.5/6/90G BK tin-plated	1727990000	43
LP 7.62/3/180 BK	1753920000	39	PROPORT 9-PIN DSUB AC	9910560000	27	S2L 3.5/8/180 BK gold-plated	1756810000	43
LP 7.62/3/90 BK	1697210000	39	PROPORT AC +5A CIRCUIT BREAK	9916200000	27	S2L 3.5/8/180 BK tin-plated	1729280000	43
LP2N 5.08/10/90 OG	1596500000	39	PROPORT AC +9 PIN DSUB	9910670000	27	S2L 3.5/8/180F BK tin-plated	1729600000	43
LP2N 5.08/12/90 OG	1632560000	39	PROPORT AC PLUG +15 PIN DSUB	9909030000	27	S2L 3.5/8/180G BK tin-plated	1728960000	43
LP2N 5.08/16/90 OG	1596520000	39	PROPORT AC PLUG +25 PIN DSUB	9909040000	27	S2L 3.5/8/90 BK tin-plated	1728320000	43
LP2N 5.08/4/90 OG	1635150000	39	PROPORT AC PLUG +9 PIN DSUB	9909020000	27	S2L 3.5/8/90F BK tin-plated	1728640000	43
LP2N 5.08/6/90 OG	1625550000	39	PRS 120 VAC LD 1 CO (SPDT)	8530640000	13	S2L 3.5/8/90G BK gold-plated	1755530000	43
LP2N 5.08/8/90 OG	1596470000	39	PRS 120 VAC LD 2 CO (DPDT)	8530660000	13	S2L 3.5/8/90G BK tin-plated	1728000000	43
LP3R 5.08/12/90 OG	1596350000	39	PRS 230 VAC LD 1 CO (SPDT)	8530670000	13	SAI-4 MHD 4P M12	1705923000	25
LP3R 5.08/15/90 OG	1596370000	39	PRS 230 VAC LD 2 CO (DPDT)	8530680000	13	SAI-4 MHD 5P M12	1701233000	25
LP3R 5.08/18/90 OG	1596390000	39	PRS 24 VDC LD 1 CO (SPDT)	8530620000	13	SAI-4 MMS 4P M12	1783540000	25
LP3R 5.08/24/90 OG	1596410000	39	PRS 24 VDC LD 2 CO (DPDT)	8530630000	13	SAI-4 MMS 5P M12	1783520000	25
LP3R 5.08/6/90 OG	1653940000	39	PRZ 120 VAC LD 1 CO (SPDT)	8530710000	13	SAI-4-F 4P PUR 20M	9456230000	26
LP3R 5.08/9/90 OG	1596330000	39	PRZ 120 VAC LD 2 CO (DPDT)	8530720000	13	SAI-4-F 4P PUR 5M	9456190000	26
LPP 5.00/2/90 BK	1697140000	39	PRZ 230 VAC LD 1 CO (SPDT)	8530730000	13	SAI-4-F 5P PUR 5M	9456370000	26
LPP 5.00/3/90 BK	1697150000	39	PRZ 230 VAC LD 2 CO (DPDT)	8530740000	13	SAI-4-F 5P PUR 5M	9456330000	26
LPP 5.08/2/90 BK	1697120000	39	PRZ 24 VDC LD 1 CO (SPDT)	8530690000	13	SAI-4-M 3P IDC	1760040000	26
LPP 5.08/3/135 BK	1697130000	39	PRZ 24 VDC LD 2 CO (DPDT)	8530700000	13	SAI-4-M 4P IDC	1766780000	26
LPP 7.50/2/90 BK	1697260000	39	PZ 3	0567300000	49	SAI-4-M 4P M12	1705920000	26
LPP 7.50/3/90 BK	1697270000	39	PZ 4	9012500000	49	SAI-4-M 5P M12	1701230000	26
LPP 7.62/2/90 BK	1697240000	39	PZ 6 roto	9014350000	49	SAI-8 MHD 4P M12	1705943000	25
LPP 7.62/3/90 BK	1697250000	39	PZ 6/5	9011460000	49	SAI-8 MHD 5P M12	1701253000	25
LPTR 5.08/1/90 BK	1755190000	39				SAI-8 MMS 4P M2	1783530000	25
LU 10.16/2/90 2 PIN GY	1648310000	41	<b>Q</b>			SAI-8 MMS 5P M12	1783510000	25
LU 10.16/2/90 4 PIN GY	1636170000	41	QuickBloc PLC WDU-16 with Cable, Screw Terminals	67601547	22	SAI-8-F 4P PUR 20M	9456790000	26
LU 10.16/3/90 2 PIN GY	1648300000	41	QuickBloc PLC WDU-8 with Cable, Screw Terminals	67601545	22	SAI-8-F 4P PUR 5M	9456750000	26
LU 10.16/3/90 4 PIN GY	1636180000	41	QuickBloc PLC ZKS-16 with Cable, Tension Clamp	67601550	22	SAI-8-F 5P PUR 20M	9456930000	26
LX 15.00/1/90 GY	1783660000	42	QuickBloc PLC ZKS-8 with Cable, Tension Clamp	67601549	22	SAI-8-F 5P PUR 5M	9456890000	26
LX 15.00/2/90 GY	1783670000	42				SAI-8-M 3P IDC	1760060000	26
LX 15.00/3/90 GY	1783680000	42				SAI-8-M 4P IDC	1766800000	26
LX 15.00/4/90 GY	1783690000	42				SAI-8-M 4P M12	1705940000	26
LXB 15.00/2/90 GY	1783710000	42				SAI-8-M 5P M12	1701250000	26
LXB 15.00/3/90 GY	1783720000	42				SDI	9008370000	52
LXB 15.00/4/90 GY	1783730000	42				SDI	9008380000	52
LXBL 15.00/1/90 GY	1783700000	42				SDI	9008390000	52
						SDI	9008400000	52
						SDI	9008410000	52
						SDI	9008420000	52
						SDI	9008430000	52
						SDI	9008910000	52
						SDI	1011000000	28
						Single-level WSI 6	1012200000	28
						Single-level WSI 6, 24 VDC/60 VAC	1012300000	28
						Single-level WSI 6, 48 VDC/120 VAC	1014000000	28
						Single-level WSI 6/2	1014200000	28
						Single-level WSI 6/2, 24 VDC/60 VAC	1014300000	28
						Single-level WSI 6/2, 48 VDC/120 VAC	1644500000	44
						SL 3.5/2/110 BK	1643810000	44
						SL 3.5/2/135 BK	1614210000	44
						SL 3.5/2/180 BK	1614240000	44
						SL 3.5/2/180G BK	1614130000	44
						SL 3.5/2/90G BK	1614160000	44
						SL 3.5/3/110 BK	1644510000	44
						SL 3.5/3/135 BK	1643820000	44
						SL 3.5/3/180 BK	1615930000	44
						SL 3.5/3/180G BK	1616020000	44
						SL 3.5/3/90 BK	1615300000	44
						SL 3.5/3/90G BK	1615420000	44
						SL 5.00/2/180 BK	1626390000	45
						SL 5.00/2/90 BK	1625990000	45
						SL 5.00/3/180 BK	1626400000	45
						SL 5.00/3/90 BK	1626000000	45
						SL 5.08/2/180 BK	1521810000	45
						SL 5.08/2/90 BK	1512610000	45
						SL 5.08/3/180 BK	1521910000	45
						SL 5.08/3/90 BK	1512710000	45
						SL 7.50/2/180 BK	1629350000	46
						SL 7.50/2/90 BK	1628690000	46
						SL 7.50/3/180 BK	1629360000	46
						SL 7.50/3/90 BK	1628770000	46
						SL 7.62/2/180 BK	1624700000	45
						SL 7.62/2/90 BK	1623820000	45
						SL 7.62/3/180 BK	1624710000	45
						SL 7.62/3/90 BK	1623830000	45
						SL-SMT 3.5/2/180G BK	1752982001	44
						SL-SMT 3.5/2/180LF BK	1760962001	44
						SL-SMT 3.5/2/90G BK	1761542001	44
						SL-SMT 3.5/2/90G BK	1761544001	44
						SL-SMT 3.5/2/90LF BK	1762002001	44
						SL-SMT 3.5/3/180G BK	1752992001	44
						SL-SMT 3.5/3/180LF BK	1760972001	44
						SL-SMT 3.5/3/90G BK	1761552001	44
						SL-SMT 3.5/3/90G BK	1761554001	44
						SL-SMT 3.5/3/90LF BK	1762012001	44
						SL-SMT 5.08/2/180 BK	1775522001	44







Argentina  
Australia  
Austria  
Bahrain  
Belarus  
Belgium  
Brazil  
Bulgaria  
Canada  
Chile  
China  
Colombia  
Croatia  
Czech Republic  
Denmark  
Estonia  
Finland  
France  
Germany  
Greece  
Hong Kong  
Hungary  
India  
Indonesia  
Iran  
Ireland  
Israel  
Italy  
Japan  
Korea  
Luxembourg

Malaysia  
Mexico  
Morocco  
Netherlands  
New Zealand  
Norway  
Pakistan  
Peru  
Philippines  
Poland  
Portugal  
Romania  
Russia  
Saudi Arabia  
Singapore  
Slovakia  
Slovenia  
South Africa  
Spain  
Sweden  
Switzerland  
Taiwan  
Thailand  
Turkey  
Ukraine  
United Arab Emirates  
United Kingdom  
USA  
Vietnam



[www.weidmuller.com](http://www.weidmuller.com) [www.weidmuller.com](http://www.weidmuller.com)  
**www.weidmuller.com**

**W Interconnections, Inc.**

821 Southlake Blvd., Richmond, Virginia 23236

Telephone: (800) 849-9343 Facsimile: (804) 379-2593

Email: [info@weidmuller.com](mailto:info@weidmuller.com) Website: [www.weidmuller.com](http://www.weidmuller.com)

**W Interconnections Canada, Inc.**

10 Spy Court, Markham, Ontario L3R5H6

Telephone: (800) 268-4080 Facsimile: (905) 475-2798

Email: [info1@weidmuller.ca](mailto:info1@weidmuller.ca) Website: [www.weidmuller.ca](http://www.weidmuller.ca)

**W Interconnections, SA de CV**

Ave. Ing. Civiles 204-B Conjunto Ind. Chachapa

Chachapa Puebla

Telephone: 01 222 2866246/47/48 ext. 103 Facsimile: 01 222 2866242

Email: [clientes@weidmuller.com.mx](mailto:clientes@weidmuller.com.mx) Website: [www.weidmuller.com.mx](http://www.weidmuller.com.mx)