



IVO IRION & VOSSELER
ZÄHLERFABRIK GMBH & CO.
P.O. BOX 3360
D-7730 VS-SCHWENNINGEN
GERMANY
TELEPHONE: (077 20) 699-1
TELEX: 794 560 ivo d
TELETEX: 772016 = IVOVS
TELEFAX: 699-212

Product Information

**Electromechanical Counters
without reset**
F 103, F 123, F 163, F 173
- for DC or AC -

F 103

4.85

Description

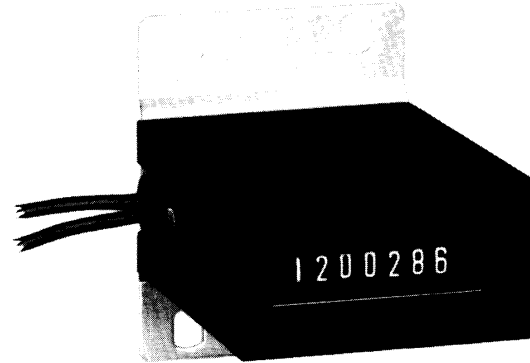
This counter is designed to operate from DC or AC without the use of a rectifier. It also incorporates an anti-shock device to prevent miscounting.

Applications:

Include all forms of gaming machines, copying machines etc.

Ordering information

1. Type No. (e. g. F 103.003)
 2. DC or AC and voltage
 3. Frequency for AC
- Accessories
 - Specials



Base-plate mounting F 163

Versions

Fixing	Front dimensions Width x Height	Figures	Shockproofing	Type No.
Rear screw mounting	50 x 25 mm	7	without	F 103.001
		7	with	F 103.003
		6	without	F 103.005
		6	with	F 103.007
Front panel for spring clip	53,2 x 28,2 mm	7	without	F 123.001
		7	with	F 123.003
		6	without	F 123.005
		6	with	F 123.007
Base-plate mounting	50 x 25 mm	7	without	F 163.001
		7	with	F 163.003
		6	without	F 163.005
		6	with	F 163.007
Front panel for screw fixing	60 x 50 mm	7	without	F 173.001
		7	with	F 173.003
		6	without	F 173.005
		6	with	F 173.007

Technical data

Operation	Electromagnetic impulse drive	Protection mode	IP 51 DIN 40 050
Method of counting	One pulse adds one unit in two half-steps	Test voltage	According to VDE 0660 § 65
Counting range	6 digits, 999 999 7 digits, 9 999 999	Ambient temperature	- 5° C . . + 50° C
Counter reading on delivery	500 before 0	Life expectancy	Appr. 50 million operations
Figures	4 mm high, white on black	Case	Metal base plate with a matt black plastic cover.
Electrical connection	By flying leads 300 mm long. For voltages above 42 V the counter case has to be earthed by means of the screw provided.	Weight	Approx. 150 g
		Accessories	Mounting rail for F 103. Standard length 300 mm. Part No. 080.00.082



IVO IRION & VOSSELER
 ZÄHLERFABRIK GMBH & CO.
 P.O. BOX 3360
 D-7730 VS-SCHWENNINGEN
 GERMANY
 TELEPHONE: (077 20) 699-1
 TELEX: 7 94 560 ivo d
 TELETEx: 772016 = IVOVS
 TELEFAX: 699-212

Product Information

**Electromechanical Counters
 without reset**
F 103, F 123, F 163, F 173
 - for DC or AC -

F 103

4.85

Description

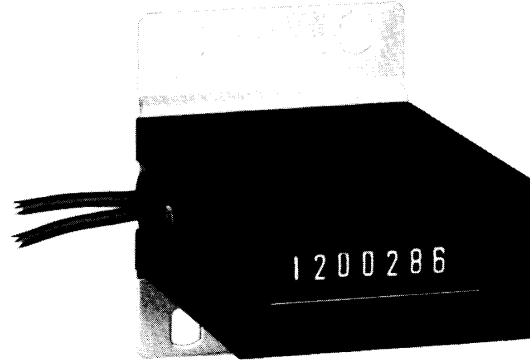
This counter is designed to operate from DC or AC without the use of a rectifier. It also incorporates an anti-shock device to prevent miscounting.

Applications:

Include all forms of gaming machines, copying machines etc.

Ordering information

1. Type No. (e. g. F 103.003)
 2. DC or AC and voltage
 3. Frequency for AC
- Accessories
 - Specials



Base-plate mounting F 163

Versions

Fixing	Front dimensions Width x Height	Figures	Shockproofing	Type No.
Rear screw mounting	50 x 25 mm	7	without	F 103.001
		7	with	F 103.003
		6	without	F 103.005
		6	with	F 103.007
Front panel for spring clip	53,2 x 28,2 mm	7	without	F 123.001
		7	with	F 123.003
		6	without	F 123.005
		6	with	F 123.007
Base-plate mounting	50 x 25 mm	7	without	F 163.001
		7	with	F 163.003
		6	without	F 163.005
		6	with	F 163.007
Front panel for screw fixing	60 x 50 mm	7	without	F 173.001
		7	with	F 173.003
		6	without	F 173.005
		6	with	F 173.007

Technical data

Operation	Electromagnetic impulse drive	Protection mode	IP 51 DIN 40 050
Method of counting	One pulse adds one unit in two half-steps	Test voltage	According to VDE 0660 § 65
Counting range	6 digits, 999 999 7 digits, 9 999 999	Ambient temperature	- 5° C . . . + 50° C
Counter reading on delivery	500 before 0	Life expectancy	Appr. 50 million operations
Figures	4 mm high, white on black	Case	Metal base plate with a matt black plastic cover.
Electrical connection	By flying leads 300 mm long. For voltages above 42 V the counter case has to be earthed by means of the screw provided.	Weight	Approx. 150 g
		Accessories	Mounting rail for F 103. Standard length 300 mm. Part No. 080.00.082

Electrical data

Max. impuls rate	Voltage $\pm 10\%$	Ripple factor/frequency	Power consumption	Min. On-time	Min. Off-time	Mark space ratio	Duty cycle at 25° C
10 i.p.s.	6 VDC 12 VDC 24 VDC 48 VDC	$\leq 48\%$	2 W	50 ms	50 ms	1 : 1	100 %
10 i.p.s.	24 VAC 110/115 VAC 220 VAC	50 or 60 Hz	5 VA, initially for a short period 7 VA	50 ms	50 ms	1 : 1	100 %

Special versions

1. With non-standard counter reading on delivery
2. Fixing bracket for DIN assembly rail

Note:

Also available as model F 183 with coded receptacle for use with copying machines.

Dimensions

