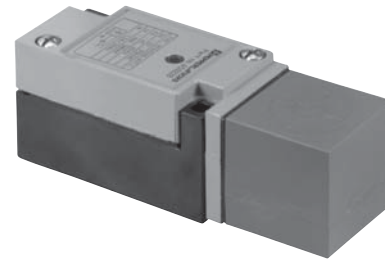


Limit Switch Style Inductive Sensors

- 15 mm sensing range
- Limit switch style housing
- LED target indication
- All-metal terminal housing



Technical Specifications

SUPPLY VOLTAGE	20-250 VAC
SUPPLY FREQUENCY	45-65 Hz
LOAD CURRENT (I _L)	500 mA max.
LEAKAGE CURRENT (OFF-STATE)	≤ 1.5 mA
OUTPUT	923 Series Normally open
VOLTAGE DROP AT I _L (MAX.)	≤ 8 V
INRUSH CURRENT	≤ 1.2 A/20 ms
HYSTERESIS	3-15% (5% typical)
SHORT CIRCUIT AND OVERLOAD PROTECTION	No
REVERSE POLARITY PROTECTED	No
LED INDICATION	See dimension drawings
SENSING FACE MATERIAL	Polyamide
STANDARDS	EN 60947-5-2
ENVIRONMENTAL PROTECTION	IP67
AMBIENT TEMPERATURE	-14°F to +158°F (-25°C to +70°C)
APPROVALS	CE



See pages 885-892 for accessories

Terminal Connection Models

Model Number	Range (mm)	Mounting	Electrical Output	Switching Frequency	Housing Material	Electrical Connection	Dwg. No.
923H26Q-A7T-L	15	Flush	N.O.	20 Hz	Polyamide/die-cast zinc	Terminal housing	1

Wiring Diagrams

2-Wire AC



Terminal Connection

