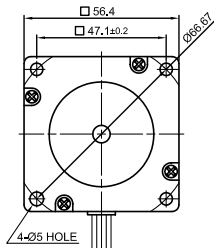
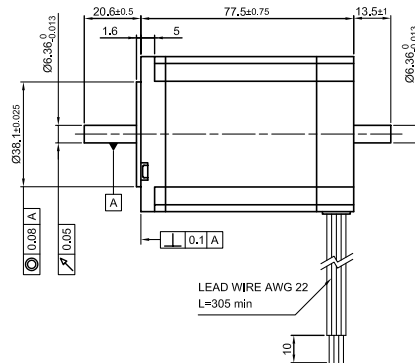


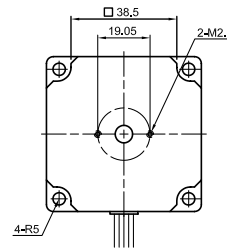
Front view and mounting



Side view



Rear view



SPECIFICATION	CONNECTION	BIPOLAR	
		SERIAL	PARALLEL
VOLTAGE (VDC)	UNIPOLAR OR BIPOLAR-1 WINDING		
AMPS/PHASE			
RESISTANCE/PHASE (Ohms)@25°C			
INDUCTANCE/PHASE (mH) @1KHz			
HOLDING TORQUE (Nm) [lb-in]			
DETENT TORQUE (Nm) [lb-in]			
STEP ANGLE (°)			
STEP ACCURACY (NON-ACCUM)			
ROTOR INERTIA (Kg-m ²) [lb-in ²]			
WEIGHT (Kg) [lb]			
TEMPERATURE RISE: MAX.80°C (MOTOR STANDSTILL; FOR 2 PHASE ENERGIZED)			
AMBIENT TEMPERATURE -10°~ 50°C [14°F ~ 122°F]			
INSULATION RESISTANCE 100 MOhm (UNDER NORMAL TEMPERATURE AND HUMIDITY)			
INSULATION CLASS B 130° [266°F]			
DIELECTRIC STRENGTH 500VAC FOR 1 MIN. (BETWEEN THE MOTOR COILS AND THE MOTOR CASE)			
AMBIENT HUMIDITY MAX. 85% (NO CONDENSATION)			

PERMISSIBLE RADIAL+AXIAL FORCE	
ROTOR SPRING-MOUNTED IN AXIAL DIRECTION	SPRING WASHER
BEARING	
AXIAL-FORCE F_a (N)	$F_a=10$
DISTANCE a (mm)	5 10 15 20
RADIAL-FORCE F_r (N)	130 90 70 52
	AXIAL RADIAL
SHAFT PLAY (mm)	0.075 0.025
AT LOAD MAX: (N)	10 5.0

TYPE OF CONNECTION (EXTERN)				MOTOR	
UNIPOLAR	BIPOLAR	SERIAL	PARALLEL	LEADS	WINDING
A	A	A	A	RED	A
COM				RED/WHT	
A\		A\	A\	BLK	A\
B	B	B	B	GRN	B
COM				GRN/WHT	
B\		B\	B\	YEL/WHT	B\
				YEL	

FULL STEP 2 PHASE-Ex., WHEN FACING MOUNTING END (X)

STEP	A	B	A\	B\	CCW
1	+	+	-	-	
2	-	+	+	-	
3	-	-	+	+	
4	+	-	-	+	

REV	DESCRIPTION	DATE	APVD	NANOTEC:	SCALE	FREE	APVD	S.H.a.	15.01.07	STEPPING MOTOR
				ST5709L1108-B	X	±0.5	CHKD			
					1PL	±0.2	DRN	J.W.	05.07.06	DWG.NO
					2PL	±0.1	SIGNATURE			ST5709L1108-B
					ANGLE	±30'				