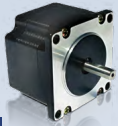


1.8° Size 23

5718 HIGH TORQUE MOTOR



- High Torque
- Wide Selection of Windings
- Can be Customized for:
 - Maximum Torque (see page 9)
 - Cables & Assemblies (see pages 21/70)
 - Shafts (see pages 21/69)
 - Drivers & Controllers (see page 99-108)
 - Maximum Efficiency (see page 12)



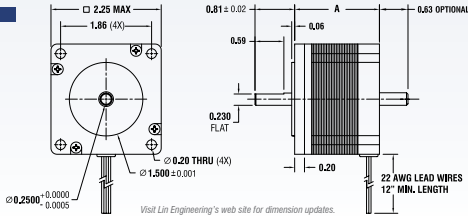
SPECIFICATIONS

BIPOLAR	Dimension "A" Max	Model #	Rated Current (Amps/Phase)	Holding Torque (oz-in)	Holding Torque (N-m)	Resistance (Ohms/Phase)	Inductance (mH/Phase)	Inertia (g-cm ²)	Weight (lbs.)	Number of Leads
1.2" / 42.2 mm		5718X-01S	1.40	100.0	0.71	2.8	5.8	0.70	1.05	4
		5718X-01P	2.80	100.0	0.71	0.7	1.4	0.70	1.05	4
		5718X-05S	0.70	100.0	0.71	10.0	16.8	0.70	1.05	4
		5718X-05P	1.40	100.0	0.71	2.5	4.2	0.70	1.05	4
		5718X-15S	2.10	100.0	0.71	1.2	1.6	0.70	1.05	4
		5718X-15P	4.20	100.0	0.71	0.3	0.4	0.70	1.05	4
2.22" / 56.4 mm		5718M-02S	2.10	173.0	1.22	1.8	5.2	1.50	1.50	4
		5718M-02P	4.20	173.0	1.22	0.5	1.4	1.50	1.50	4
		5718M-04S	0.70	173.0	1.22	14.0	42.3	1.50	1.50	4
		5718M-04P	1.40	173.0	1.22	3.5	10.6	1.50	1.50	4
		5718M-05S	1.40	173.0	1.22	3.6	10.0	1.50	1.50	4
		5718M-05P	2.80	173.0	1.22	0.9	2.5	1.50	1.50	4
3.1" / 78.7 mm		5718L-01S	1.40	294.0	2.08	4.5	15.3	2.60	2.35	4
		5718L-01P	2.80	294.0	2.08	1.1	3.8	2.60	2.35	4
		5718L-03S	2.10	294.0	2.08	2.4	7.0	2.60	2.35	4
		5718L-03P	4.20	294.0	2.08	0.6	1.8	2.60	2.35	4
		5718L-04S	3.27	294.0	2.08	1.0	5.2	2.60	2.35	4
		5718L-04P	6.54	294.0	2.08	0.3	1.3	2.60	2.35	4

UNIPOLAR	Dimension "A" Max	Model #	Rated Current (Amps/Phase)	Holding Torque (oz-in)	Holding Torque (N-m)	Resistance (Ohms/Phase)	Inductance (mH/Phase)	Inertia (g-cm ²)	Weight (lbs.)	Number of Leads
1.2" / 42.2 mm		5718U-01	2.00	72.0	0.51	1.4	1.4	0.70	1.05	6
		5718U-05	1.00	72.0	0.51	5.0	4.2	0.70	1.05	6
		5718U-15	3.00	72.0	0.51	0.6	0.4	0.70	1.05	6
2.22" / 56.4 mm		5718M-02	3.00	130.0	0.92	0.9	1.4	1.50	1.50	6
		5718M-04	1.00	130.0	0.92	7.0	10.6	1.50	1.50	6
		5718M-05	2.00	130.0	0.92	1.8	2.5	1.50	1.50	6
3.1" / 78.2 mm		5718L-01	2.00	210.0	1.48	2.3	3.8	2.60	2.35	6
		5718L-03	3.00	210.0	1.48	1.2	1.8	2.60	2.35	6
		5718L-04	4.67	210.0	1.48	0.5	1.3	2.60	2.35	6

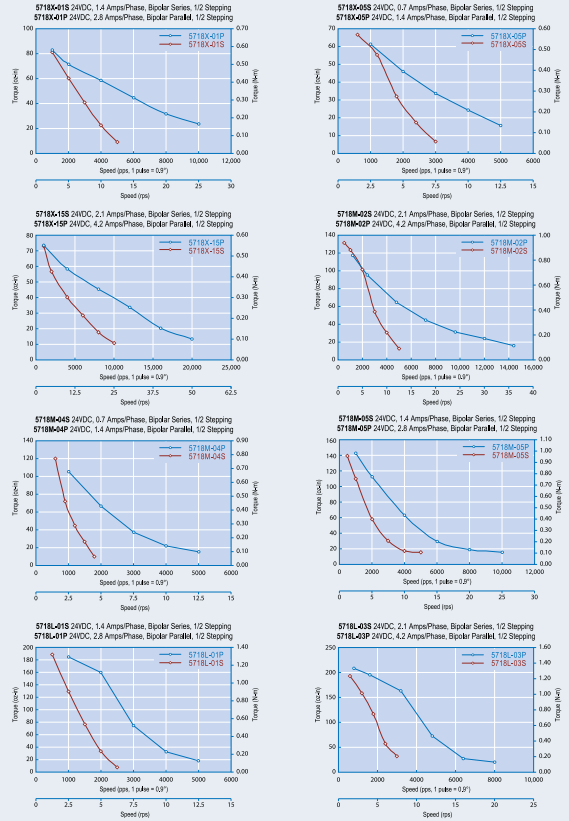
- Please complete our application data sheet on page 116 for different windings.
- Call Lin Engineering for additional bipolar torque curves.
- Performance, use, and appearance specifications of the products listed here are subject to change without notice.
- For operating temperatures, see page 114.
- All specifications are approximations. Please contact Lin Engineering for more details.

DIMENSIONS



Visit Lin Engineering's web site for dimension updates.

TORQUE CURVES



AVAILABLE OPTIONS



16245 Vineyard Blvd, Morgan Hill, CA 95037 - Tel. 408-919-0200 - Fax. 408-919-0201 - sales@linengineering.com - www.linengineering.com

STEP MOTORS
INTEGRATED MOTORS
BLDC MOTORS
CUSTOM DESIGNS
ACCESSORIES
R&D TECHNOLOGIES