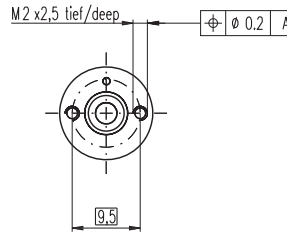
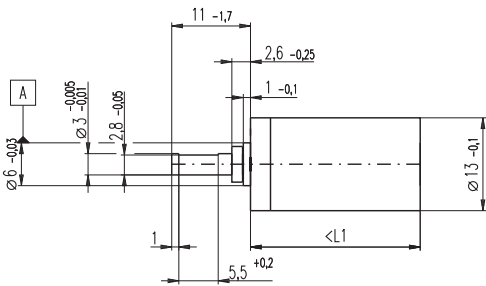


# Planetary Gearhead GP 13 A $\varnothing 13$ mm, 0.2 - 0.35 Nm



M 1:1

## Technical Data

Planetary Gearhead	straight teeth
Output shaft	stainless steel, hardened
Bearing at output	sleeve bearing
Radial play, 6 mm from flange	max. 0.055 mm
Axial play	0.02 - 0.10 mm
Max. permissible axial load	8 N
Max. permissible force for press fits	100 N
Sense of rotation, drive to output	=
Recommended input speed	< 8000 rpm
Recommended temperature range	-15 ... +100°C
Extended area as option	-35 ... +100°C
Number of stages	1 2 3 4 5
Max. radial load, 6 mm from flange	8 N 12 N 16 N 20 N 20 N

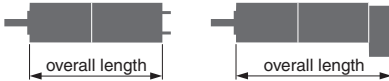
maxon gear

- Stock program
- Standard program
- Special program (on request)

## Order Number

Gearhead Data	Order Number				
	110313	110314	110315	110316	110317
1 Reduction	4.1 : 1	17 : 1	67 : 1	275 : 1	1119 : 1
2 Reduction absolute	57/14	3249/196	185193/2744	10556001/38416	601692057/537824
3 Max. motor shaft diameter mm	1.5	1.5	1.5	1.5	1.5
<b>Order Number</b>	<b>352365</b>	<b>352366</b>	<b>352367</b>	<b>352368</b>	<b>352369</b>
1 Reduction	5.1 : 1	26 : 1	131 : 1	664 : 1	3373 : 1
2 Reduction absolute	66/13	4356/169	287496/2197	18974736/28561	1252332576/371293
3 Max. motor shaft diameter mm	1.5	1.5	1.5	1.5	1.5
4 Number of stages	1	2	3	4	5
5 Max. continuous torque Nm	0.20	0.20	0.30	0.30	0.35
6 Intermittently permissible torque at gear output Nm	0.30	0.30	0.45	0.45	0.53
7 Max. efficiency %	91	83	75	69	62
8 Weight g	11	14	17	20	23
9 Average backlash no load °	1.0	1.2	1.5	1.8	2.0
10 Mass inertia gcm <sup>2</sup>	0.025	0.015	0.015	0.015	0.015
11 Gearhead length L1* mm	16.0	19.9	23.7	27.6	31.4

\* for A-max 12 and RE-max 13 L1 is + 0.2 mm



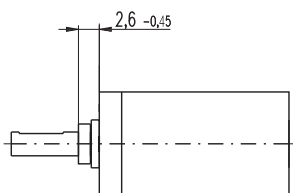
## maxon Modular System

+ Motor	Page	+ Sensor / Brake	Page	Overall length [mm] = Motor length + gearhead length + (sensor / brake) + assembly parts				
RE 13	57/59			35.4	39.3	43.1	47.0	50.8
RE 13, 0.75 W	59	MR	257-259	42.5	46.4	50.2	54.1	57.9
RE 13, 0.75 W	59	MEnc 13	275	43.2	47.1	50.9	54.8	58.6
RE 13	61/63			47.6	51.5	55.3	59.2	63.0
RE 13, 2 W	63	MR	257-259	54.7	58.6	62.4	66.3	70.1
RE 13, 2 W	63	MEnc 13	275	55.4	59.3	63.1	67.0	70.8
RE 13, 1.5 W	65/67			38.5	42.4	46.2	50.1	53.9
RE 13, 1.5 W	67	MR	257-259	44.6	48.5	52.3	56.2	60.0
RE 13, 1.5 W	67	MEnc 13	275	46.5	50.4	54.2	58.1	61.9
RE 13, 3 W	69/71			50.7	54.6	58.4	62.3	66.1
RE 13, 3 W	71	MR	257-259	56.8	60.7	64.5	68.4	72.2
RE 13, 3 W	71	MEnc 13	275	58.7	62.6	66.4	70.3	74.1
A-max 12	91/92			37.6	41.5	45.3	49.2	53.0
A-max 12, 0.5 W	92	MR	257-259	41.7	45.6	49.4	53.3	57.1
RE-max 13	119/120			36.9	40.8	44.6	48.5	52.3
RE-max 13, 0.75 W	120	MR	257-259	41.6	45.5	49.3	53.2	57.0
RE-max 13	121/122			47.9	51.8	55.6	59.5	63.3
RE-max 13, 2 W	122	MR	257-259	52.6	56.5	60.3	64.2	68.0
EC 13, 6 W	144			37.4	41.3	45.1	49.0	52.8
EC 13, 12 W	145			49.6	53.5	57.3	61.2	65.0

## Option Ball Bearing

## Order Number

## Technical Data



Gearhead length: L1 + 0.2 mm

Order Number			Technical Data	
4.1 : 1	144300	131 : 1	352393	Planetary Gearhead
5.1 : 1	352391	275 : 1	144303	Output shaft
17 : 1	144301	664 : 1	352394	Bearing at output
26 : 1	352392	1119 : 1	144304	Radial play, 6 mm from flange
67 : 1	144302	3373 : 1	352395	Axial play at axial load
				Max. permissible axial load
				Max. permissible force for press fits
				Sense of rotation, drive to output
				Recommended input speed
				Recommended temperature range
				Extended area as option
				Number of stages
				Max. radial load,
				6 mm from flange
				Gearhead values according to sleeve bearing version