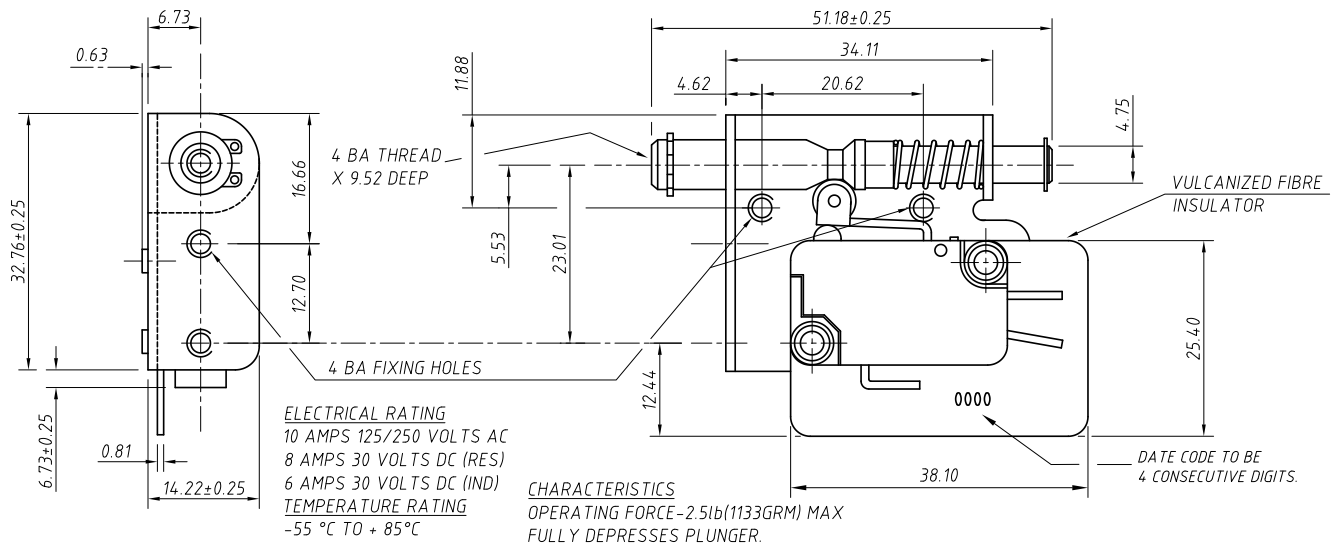
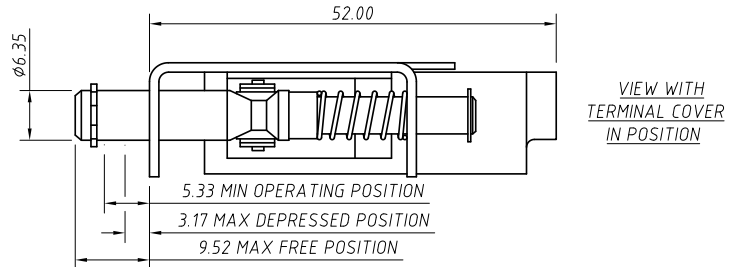


NOTES

1. SWITCHES TO BE SUPPLIED WITH COVERS FITTED.
2. DO NOT CODE SWITCH WITH 73-6905 OR ANY MARKING OTHER THAN THAT SHOWN ON FIBRE INSULATOR.
3. SWITCH TO BE SECURELY FASTENED TO BRACKET.

PACKING PROCEDURE

1. USE PRINTED BAG (BAGGING MACHINE).
2. PACK BAGS INTO OUTER CARTONS (50 BAGS PER CARTON).



ISS	ECN	SIGN	DATE	ISS	ECN	SIGN	DATE	NOTICE		STANDARD TOLERANCES		MATERIAL		DRAWN	DATE	SIGN	DATE
A	81831	PD	19.5.75	-	-	-	-	ALL RIGHTS RESERVED. UNAUTHORISED USE, DISCLOSURE OR REPRODUCTION IN WHOLE OR IN PART IS STRICTLY PROHIBITED.		NO PLACE DEC. ±0.5 1 PLACE DEC. ±0.2 2 PLACE DEC. ±0.1 DIAMETERS ±0.05 ANGULAR ±0.5° UNLESS OTHERWISE STATED		FINISH		BV	10.03.04	-	-
B	83831	BV	6.9.82	-	-	-	TITLE V3 DOOR INTERLOCK SW. TL										
C	84240	JPL	12.12.86	-	-	-	DRAWING No 73-6905 Sht. 1										
D	84333	GP	27.10.87	-	-	-	SCALE: 2:1										
E	87437	BV	10.3.04	-	-	-	© 2004										

Switches
Switchpanels

Norway Road
Halesa
Portsmouth
Hants PO3 5HT

Tel: +44 (0)23 92 656200
Fax: +44 (0)23 92 666332
Internet: www.hwswitches.co.uk