

986-689 to 793

GSA EN 50041 Safety Metal Standard



Technical Data

Mechanical life up to 15 million operations

Degree of protection IP67
NEMA/UL type 1, 4, 12, 13

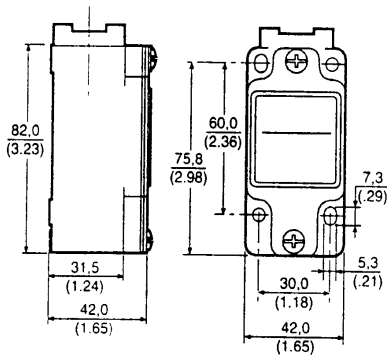
Temperature range
Operating : -25°C to +85°C
-13°F to +185°F
Storage : -40°C to +85°C
-40°F to +185°F

Approvals* IEC 947-5-1
EN60947-5-1
AC15 A300/A600
DC13 Q300
UL & CSA

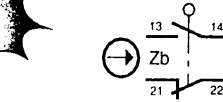
Vibration 10 g conforming to IEC 68-2-6

Shock 50 g conforming to IEC 68-2-27
Terminal marking to EN 50013

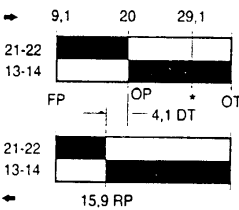
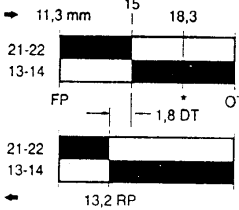
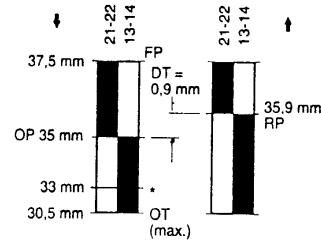
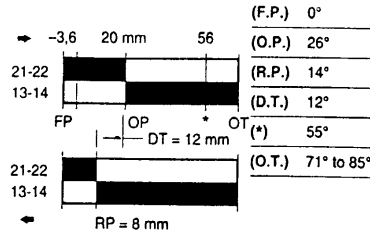
* See Standards (page 5)



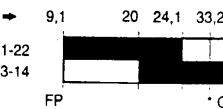
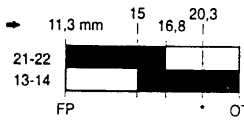
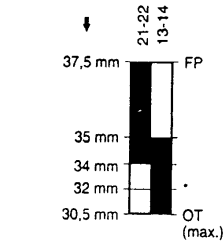
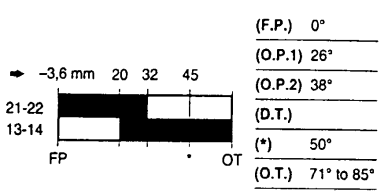
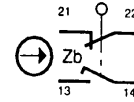
Snap-Action Contacts



● Circuit closed
* Positive opening to IEC 947-5-1-3



Slow-Action Contacts MAKE BEFORE BREAK



* Point from which the positive opening is assured

Conduit Thread

Standard = **A** **A** = 1/2" NPT

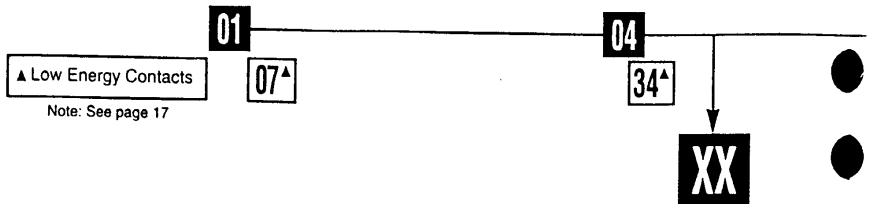
B = PG 13,5

C = 20 mm

D = PF 1/2

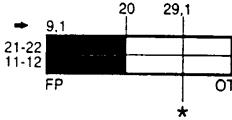
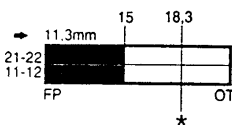
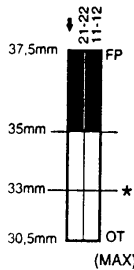
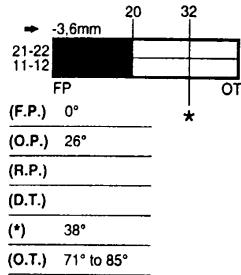
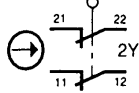
Ordering :

GS **X** **X**

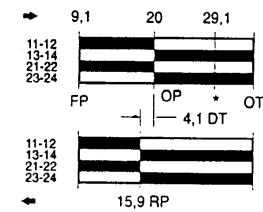
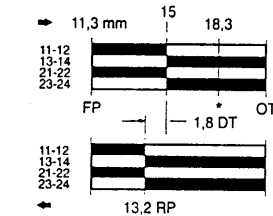
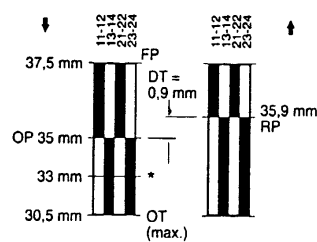
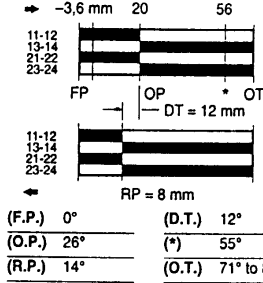
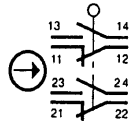


Note: See page 17

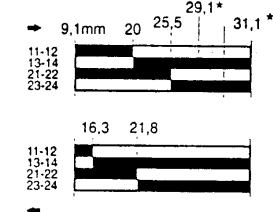
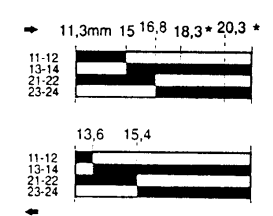
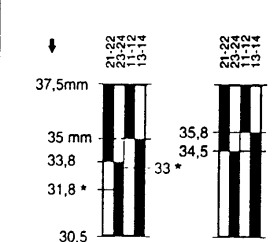
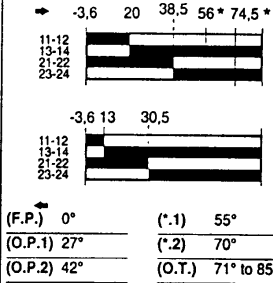
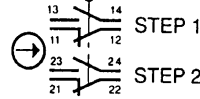
Slow-Action Contacts
2 NORMALLY CLOSED



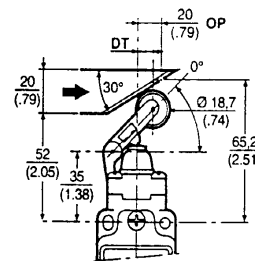
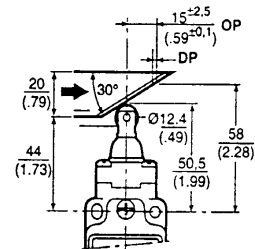
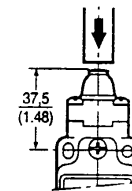
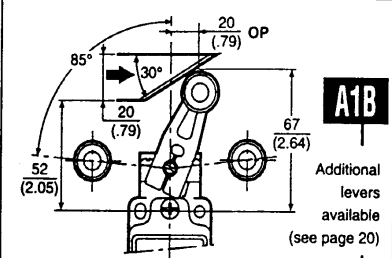
Snap-Action Contacts
DOUBLE POLE



Snap-Action Contacts
DOUBLE POLE SEQUENTIAL



Actuator Types



06

36^A

20

22^A

21

28^A

XXX