

Honeywell

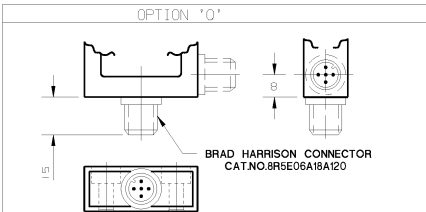
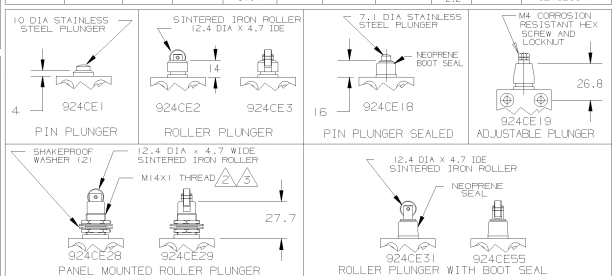
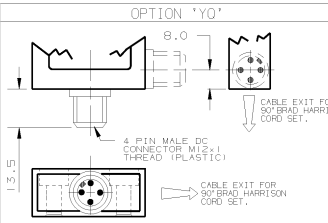
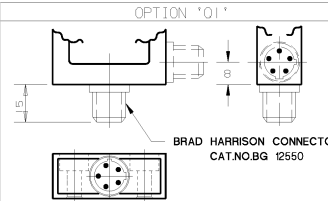
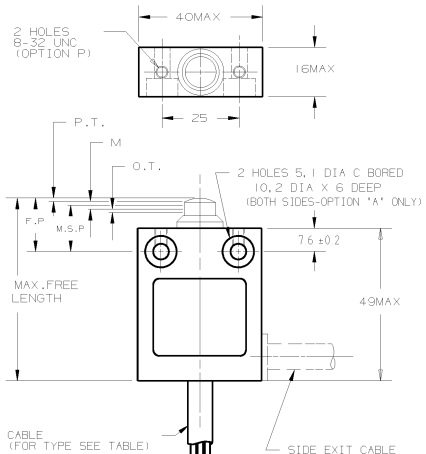
SMALL PRECISION LIMIT SWITCH

CATALOGUE LISTING 924CE SERIES CHART I

MAX FREE LENGTH	FREE POS'n IF,P,I	OPERATING FORCE MAX KG.F. NEWTONS	MAX SAFE POS'n MIN (O,T)	OVER TRAVEL MIN (O,T)	MAKE TO BREAK DIST (M)	BREAK TO MAKE DIST (M)	P.T. MAX (P,T,I)	ISSUE	SWITCH TYPE
59	17.1 ±0.4	2.3	22.5	13.1	1	240.5	2.2	5	924CE1-S
				13.1	0.5	0.7±0.5	4	5	924CE1-T
72	29.9 ±0.4	2.3	22.5	25.9	1	240.5	2.2	5	924CE2-S
				25.9	0.5	0.7±0.5	4	5	924CE2-T
72	29.9 ±0.4	2.3	22.5	25.9	1	240.5	2.2	5	924CE3-S
				25.9	0.5	0.7±0.5	4	5	924CE3-T
67.5	23.9 ±0.4	2.3	22.5	19.9	1	240.5	2.2	1	924CE1B-S
				19.9	0.5	0.7±0.5	4	1	924CE1B-T
82.4	ADJUSTABLE 32 TO 58 *	2.3	22.5	39.9	1	240.5	2.2	1	924CE19-S
				39.9	0.5	0.7±0.5	4	1	924CE19-T
86	43.9 ±0.4	2.3	22.5	39.9	1	240.5	2.2	5	924CE2B-S
				39.9	0.5	0.7±0.5	4	5	924CE2B-T
86	43.9 ±0.4	2.3	22.5	39.9	1	240.5	2.2	5	924CE2B-Y
				39.9	0.5	0.7±0.5	4	5	924CE2B-S
78	35.7 ±0.4	2.6	25.5	31.7	1	240.5	2.2	5	924CE29-T
				31.7	0.5	0.7±0.5	4	5	924CE29-Y
78	35.7 ±0.4	2.6	25.5	31.7	1	240.5	2.2	5	924CE31-S
				31.7	0.5	0.7±0.5	2	5	924CE31-T
78	35.7 ±0.4	2.6	25.5	31.7	1	210.5	2.2	5	924CE31-Y
				31.7	0.5	0.7±0.5	4	5	924CE55-S
78	35.7 ±0.4	2.6	25.5	31.7	1	210.5	2.2	5	924CE55-T
				31.7	0.5	0.7±0.5	2	5	924CE55-Y

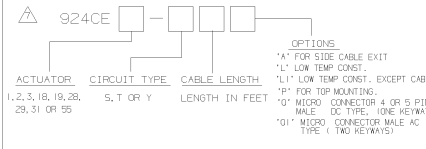
NOTES

- 1: DIE-CAST HOUSING FINISHED IN RED PAINT
- 2: SWITCH MOUNTS THROUGH A 14.5 DIA HOLE
- 3: MAXIMUM PANEL THICKNESS = 4.2
- 4: THE MINIMUM PLUNGER TRAVEL PAST BREAK FOR A SAFE CONTACT GAP IS 1.5MM (S & Y ONLY)
- 5: TEMPERATURE RANGE :- STANDARD CONSTRUCTION : 0°C to +70°C LOW TEMP. CONSTRUCTION : -40°C to +70°C (S/JTD00W)
- 6: LOW TEMP. CABLE TPE SHEATHED (S/D00W)
- 7: ALL LOGICAL LISTINGS ARE IEC 947-5-1 APPROVED.



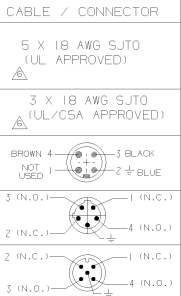
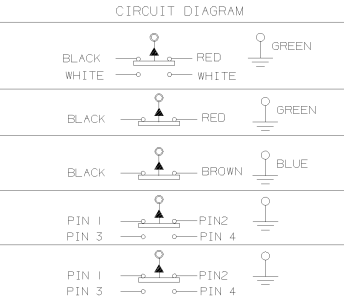
CATALOGUE LISTING CONVENTION

OPTIONS CAN BE COMBINED WITHIN LOGICAL LIMITS. EG. (924CE1-Y3AP)



CIRCUIT TYPE	ELECTRICAL RATING
S BREAK BEFORE MAKE	10A-250 VAC 1/3 HP-125/250 VAC
T MAKE BEFORE BREAK	UL us CE
Y SINGLE THROW NORMALLY CLOSED	10A-250 VAC 1/3 HP-125/250 VAC
DC CONNECTOR 4 PIN, M12 THREAD (OPTION 'Y0')	10A-250 VAC 1/3 HP-125/250 VAC UL us CE
AC CONNECTOR 5 PIN (OPTION '01')	250VAC, 4A UL us CE
DC CONNECTOR 5 PIN (OPTION '0')	250VAC, 4A UL us CE

IEC 947-5-1
EN60947-5-1
AC15 B300
DC15 R300



924CE SERIES
CHART I
REPLACES
ISSUE 17
RELEASE NUMBER
05 JUN 66
DIM
DRAWN P.C.
MASTER
REVISIONS
7 MS111095
9 CN14484
31.1.90 ML
9 CN169116
23.8.90 RA
10 00-000206
1 12.97 ML
11 BR.145E
04.06.02 ML
12 PR.1667
12.01.03 ML
13 PR.1802
21.05.03
14 PR.1846
12.06.03
15 PR.1846
15.12.03
16 0008899
25.05.04
17 0022187
R35
05 JUN 66

THE COPYRIGHT OF THIS DRAWING IS THE PROPERTY OF HONEYWELL LTD. THE DRAWING IS SUPPLIED TO YOU CONFIDENT AND MUST NOT BE USED FOR ANY PURPOSE OTHER THAN THAT FOR WHICH IT IS SUPPLIED