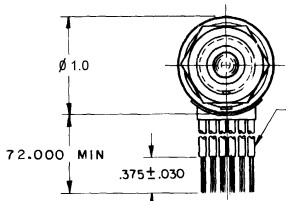
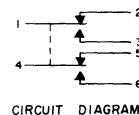


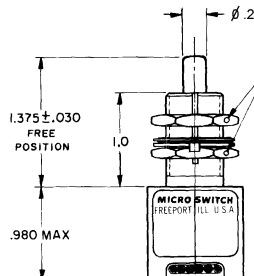
MICRO SWITCH
a Honeywell Division

SWITCH-ENCLOSED

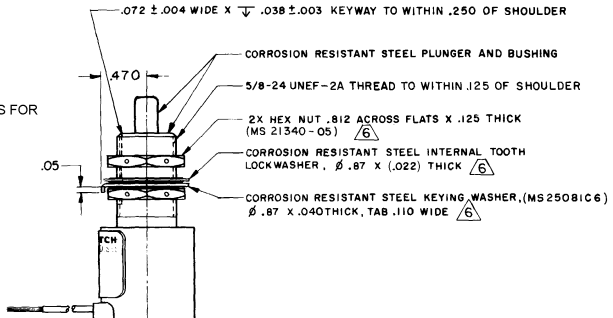
CATALOG LISTING
1HE1-6
MILITARY PART NUMBER
M8805/80-01



6X NO. 20 WIRE LEAD PER MIL-W-22759/7
MARKED WITH CIRCUIT IDENTIFICATION
AND WIRE GAGE (1-20, 2-20, ETC)
PER MIL-W-5088



3X ϕ .047 HOLES FOR
WIRE LOCKING



.072 \pm .004 WIDE X ∇ .038 \pm .003 KEYWAY TO WITHIN .250 OF SHOULDER
CORROSION RESISTANT STEEL PLUNGER AND BUSHING
5/8-24 UNEF-2A THREAD TO WITHIN .125 OF SHOULDER
2X HEX NUT .812 ACROSS FLATS X .125 THICK (MS 21340-05) ∇ 6
CORROSION RESISTANT STEEL INTERNAL TOOTH LOCKWASHER, ϕ .87 X .022 THICK ∇ 6
CORROSION RESISTANT STEEL KEYING WASHER, (MS25081C6) ϕ .87 X .040 THICK, TAB .110 WIDE ∇ 6

CATALOG LISTING
1HE1-6
PAGE 1 OF 1
RELEASE NO. SR 12879
REPLACES
ISSUE
M
13
CHECK
REVISIONS
A 201060
5 SEP 00
CHECK
DRAWN
CSL 15 SEP 00
SAV 5 SEP 00
CHECK
RASTER

ANSI Y14.5M-1982 APPLIES

THIS DRAWING COVERS A PROPRIETARY ITEM AND IS THE PROPERTY OF MICRO SWITCH, A DIVISION OF HONEYWELL. THIS DRAWING IS NOT TO BE COPIED OR USED WITHOUT THE APPROVAL OF MICRO SWITCH

CHARACTERISTICS	
OPERATING FORCE	6-12 LB
FULL OVERTRAVEL FORCE	30 LB MAX
RELEASE FORCE	4 LB MIN
PRETRAVEL	.040 MAX
DIFFERENTIAL TRAVEL	.020 MAX
OVERTRAVEL	.250 MIN

ELECTRICAL DATA	
CONTACT ARRANGEMENT 2X SPDT	
LOAD	28VDC SEA LEVEL AND 100,000 FT.
RESISTIVE	5 AMPS
INDUCTIVE	3 AMPS
MOTOR	4 AMPS

THIRD ANGLE PROJECTION
SCALE FULL
DO NOT SCALE PRINT
UNLESS OTHERWISE SPECIFIED TOLERANCES ARE
ONE PLACE (.0) \pm .030
TWO PLACE (.00) \pm .015
THREE PLACE (.000) \pm .005
ANGLES \pm
WEIGHT 7.5 OZ MAX

- NOTES
- ENCLOSURE FINISHED WITH BLUE EPOXY BASED ENAMEL COLOR NO. 25184 PER FEDERAL STANDARD 595
 - CIRCUIT DIAGRAM CATALOG LISTING AND MILITARY STD. NO. M8805/80-01 ARE SHOWN ON NAMEPLATE
 - FOR OPERATION IN TEMPERATURES OF -65°F TO +257°F
 - COINCIDENCE OF OPERATING AND RELEASING POINTS: .010 INCH OF PLUNGER TRAVEL
 - SWITCH SEALED PER MIL-PRF-8805 SYMBOL 5 HARDWARE MAY BE PACKAGED UNASSEMBLED PER MIL-PRF-8805