

MICRO SWITCH

A DIVISION OF HONEYWELL INTERNATIONAL COMPANY

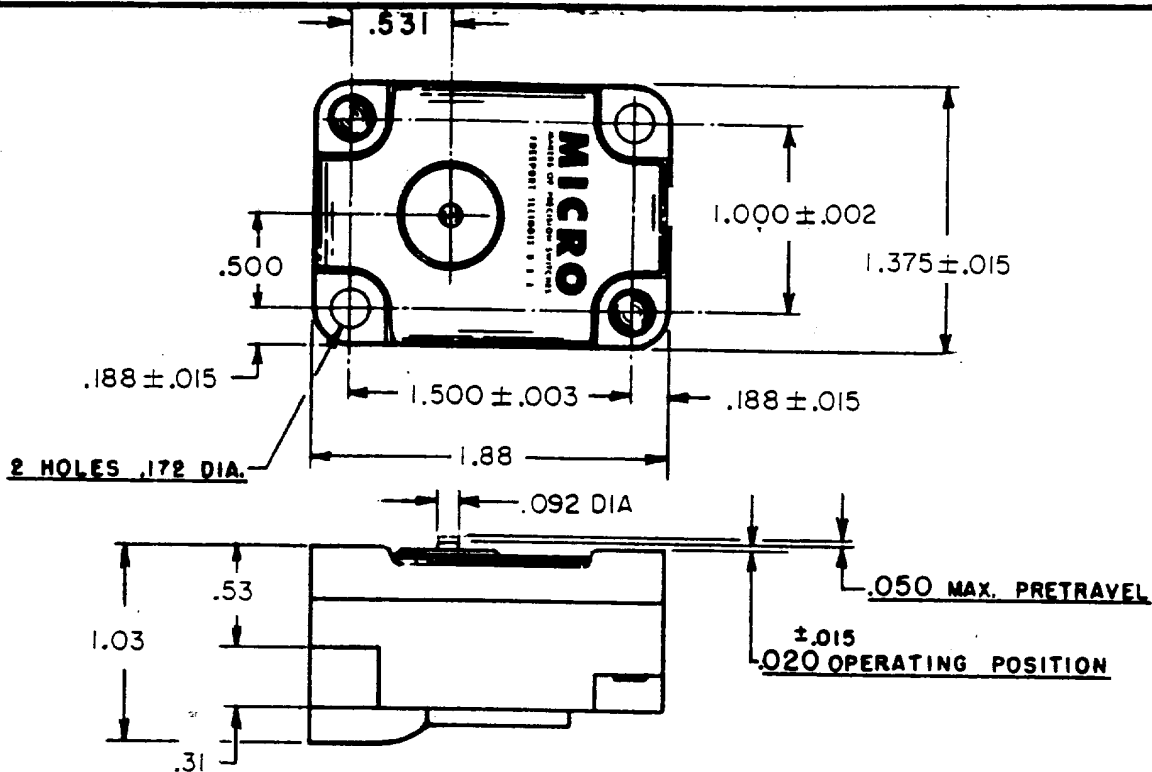
FED. MFR. CODE 91929

SWITCH - BASIC

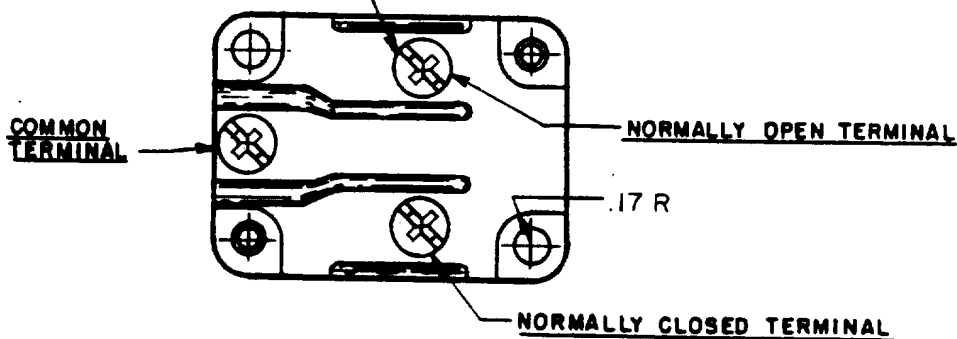
CATALOG LISTING

1MK1

THIS DRAWING COVERS A PROPRIETARY ITEM AND IS THE PROPERTY OF MICRO SWITCH, A DIVISION OF HONEYWELL. THIS DRAWING IS NOT TO BE COPIED OR USED WITHOUT THE APPROVAL OF MICRO SWITCH.



3X 8-32 UNC (.219) BINDING HEAD COMBINATION TERMINAL SCREW



NOTE:

1 - ONLY NO. 8 ROUND HEAD SCREWS AND SAE LIGHT SPRING WASHER SHOULD BE USED FOR MOUNTING SWITCH IN ORDER TO PROVIDE PROPER ELECTRICAL CLEARANCES.

CHARACTERISTICS

OPERATING FORCE ----- 14-22 OZ.
 RELEASE FORCE ----- 10 OZ. MIN.
 DIFFERENTIAL TRAVEL ----- .002-.0075
 OVERTRAVEL ----- .010 MIN.

ELECTRICAL DATA

CONTACT ARRANGEMENT
 S. P. D. T.

SCALE FULL

DO NOT SCALE PRINT
 UNLESS OTHERWISE SPECIFIED:
 DIMENSIONS ARE IN INCHES
 TOLERANCES ARE
 FRACTIONS ± 1/64
 DECIMALS ± .010
 ANGLES ±
 WEIGHT

1MK1

M

DRAWING NUMBER

ISSUE X2

REVISIONS

DATE

BY

CHKD

APP'D

DATE

BY

CHKD

APP'D

DATE

BY

CHKD

APP'D

REPLACES 50, JULY 54
 RELEASE NO. 50, JULY 54
 CASE 14-170, 54
 15 P40, 54
 30, JULY 54
 R. G. C.