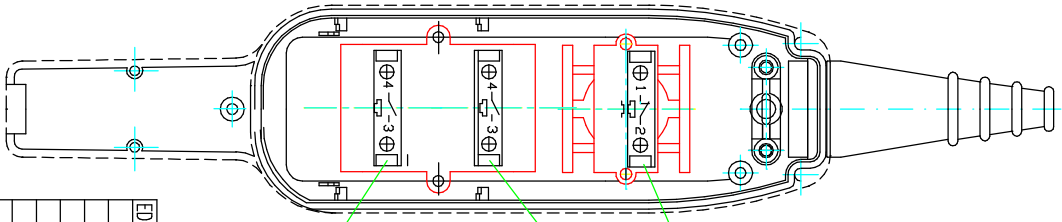


INTERNAL POSITION



- SPECIFICATIONS:**
- SWITCHES - ELECTRICAL RATING : 1th 16A-UI 690V
  - IN SPECIFICATION NORME:
  - UTILIZATION : ACIS-DC13 IN ACCORDANCE IEC 947-5-1 - IEC 947-3
  - PROTECTION IP65 IN ACCORDANCE IEC 529
  - OPERATING TEMPERATURE -25 +70°C ( -20F TO +170F )
  - MECHANICAL LIFE - 1 MILION OPERATIONS

PLASTIC MATERIAL

COVER : ABS  
 BOX : ABS

EDZ.	DATA	MODIFICA	PRESCRIZIONE DI ISPEZIONE	
			Visivo	I 2,5
			Quota critica	II 1
			Altre quote	I 2,5
@Glowanzona International B.V. Van Heuven Goedhartlaan 937 1181 LD - AMSTELVEEN - NL			MATERIALE	DIS. E SPINELLI
DENOMINAZIONE				DATA 19/07/2003
PULS.2 TASTI 1 N.D. EMERG. 1 N.C.			SCALA	APPROV.
Dimensioni Normali >0,5 >3 >6 >30 >120 >315 >1000 >2000 >4000 ...3 ...6 ...30 ...120 ...315 ...2000 ...4000		Toller. - 0,2 0,5 0,8 1,2 2 3 4 5	DESIGN N° P03.1	