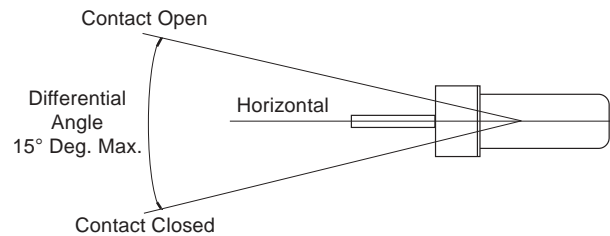
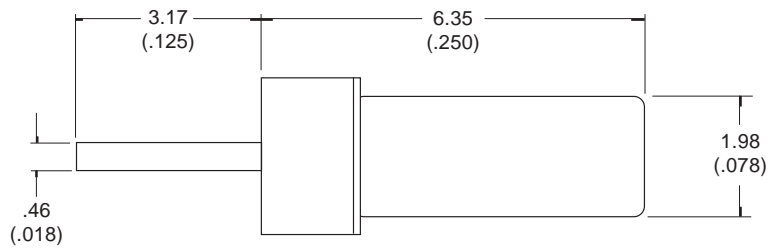
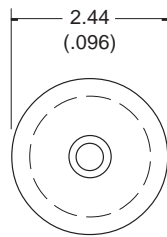


Comus Group of Companies

PRODUCT DATA SHEET



Drawings not to scale
All dimensions in mm (inches) nominal

SWITCH OPERATION

SPECIFICATION

CONTACT FORM/STYLE		Non Mercury
SWITCHING VOLTAGE	Max. Vac	50
SWITCHING CURRENT	Max. A	0.15
SWITCHING CAPACITY	Max. VA	2.0
CONTACT RESISTANCE	Max. Ω	30
OPERATING TEMPERATURE	Deg. $^{\circ}\text{C}$	-37 +100
STORAGE TEMPERATURE	Deg. $^{\circ}\text{C}$	-37 +125
CASE MATERIAL		Steel, gold plated
FEATURES		Gold plated contacts. Hermetically sealed construction

NOTE: When cutting or bending switch leads it is important that the glass seal is not damaged. The cutting or bending point should be no closer than 3mm to the glass to metal seal and the lead should be supported between the cutting or bending point and the glass to metal seal.

TILT SWITCH / MOTION SENSOR
Micro-Miniature

PART NUMBER
AU2100-0

Rev. No.	Revision Note	Date	Signature
A	Web Site 2002	1-10-02	RG

The Comus Group of Companies consist of:
Asmetech Europe Limited
E. Bachem GmbH
Comus International
W. Gunther GmbH
Gunther Belgium
Gunther France
S.T.G.

As part of the company policy of continued product improvement, specifications may change without notice. Our sales office will be pleased to help you with the latest information on this product range and details of our full design and manufacturing service. All products are supplied to our standard conditions of sale otherwise agreed in writing.

©2001 Copyright Comus Group of Companies