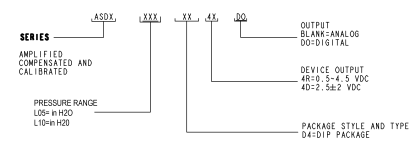
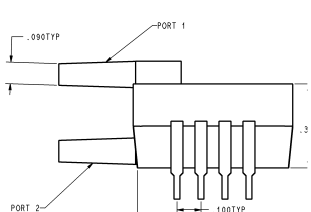
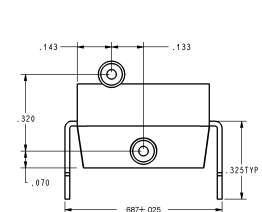
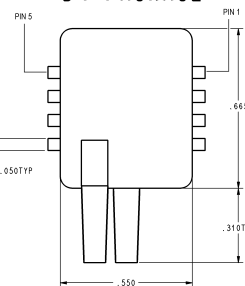


D4 PACKAGE



STANDARD LISTING

ASDXL0044D
ASDXL10044D
ASDXL10044R

DO LISTINGS

ASDXL0044D-DO
ASDXL10044D-DO
ASDXL10044R-DO

PIN OUT

1	V+V
2	VOUT
3	GND
4	N/C
5	SCL
6	VPP
7	SDA
8	N/C

- SPECIFICATION NOTES:**
- NOTE 1: REFERENCE CONDITIONS (UNLESS OTHERWISE NOTED): SUPPLY VOLTAGE, $V_s=5.0 \pm 0.01$ Vdc; $T_a=25$ C.
 - NOTE 2: SPAN IS THE ALGEBRAIC DIFFERENCE OF THE OUTPUT VOLTAGE BETWEEN MAXIMUM SPECIFIED PRESSURE AND MINIMUM SPECIFIED PRESSURE.
 - NOTE 3: FULL SCALE PRESSURE IS THE WORKING PRESSURE OF THE SENSOR.
 - NOTE 4: ACCURACY IS THE COMBINED ERRORS FROM OFFSET AND SPAN CALIBRATION, LINEARITY, PRESSURE HYSTERESIS, AND TEMPERATURE EFFECTS. LINEARITY IS THE MEASURED DEVIATION BASED ON A STRAIGHT LINE. HYSTERESIS IS THE MAXIMUM OUTPUT DIFFERENCE AT ANY POINT WITHIN THE OPERATING PRESSURE RANGE FOR INCREASING AND DECREASING PRESSURE. CALIBRATION ERRORS INCLUDE THE DEVIATION OF OFFSET AND FULL SCALE FROM NOMINAL VALUES.
 - NOTE 5: RESPONSE TIME FOR A 10% TO 90% OF FULL SCALE SPAN STEP CHANGE.
 - NOTE 6: IF PRESSURE APPLIED BEYOND THE SPECIFIED PROOF PRESSURE IT LIMIT MAY CAUSE DAMAGE OR DEGRADATION TO THE DEVICE.
 - NOTE 7: IF MAXIMUM BURST PRESSURE IS EXCEEDED, EVEN MOMENTARILY, THE PACKAGE MAY LEAK OR BURST, OR THE PRESSURE SENSING DIE MAY FRACTURE.
 - NOTE 8: PIN #6 MUST BE LEFT OPEN.
 - NOTE 9: CAPACITOR 220 pF REQUIRED BETWEEN $-V_s$ AND GND.
 - NOTE 10: THE SENSOR IS NOT REVERSE POLARITY PROTECTED. INCORRECT APPLICATION OF EXCITATION VOLTAGE OR GROUND TO THE WRONG PIN CAN CAUSE ELECTRICAL FAILURE. APPLICATION OF SUPPLY VOLTAGE ABOVE THE MAXIMUM CAN CAUSE ELECTRICAL FAILURE.
 - NOTE 11: NC MEANS "NO CONNECTION". CONNECTING TO GROUND OR OTHER POTENTIAL MAY DAMAGE THE SENSOR.
 - NOTE 12: WITHIN THE SUPPLY VOLTAGE RANGE (V_s), THE OUTPUT, INCLUDING SPAN: THE ANALOG OUTPUT IS RATIOMETRIC TO THE SUPPLY VOLTAGE. THE -DO DIGITAL OUTPUT IS NOT RATIOMETRIC.
 - NOTE 13: THIS SENSOR IS ESD SENSITIVE CLASS II.

PARAMETER ¹	DEVICE OUTPUT TYPE OR PRESSURE	ANALOG OUTPUT			DIGITAL OUTPUT(DO)				
		MIN	NOM	MAX	UNITS	MIN	NOM	MAX	UNITS
OFFSET VOLTAGE	D44R	0.400	0.500	0.600	VDC	147	159	1EBB	COUNTS HEX
	D44D	2.400	2.500	2.600	VDC	7AE	80D	851	COUNTS HEX
SPAN ²	D44R	-	4.000	-	VDC	-	CCC	-	COUNTS HEX
	D44D ³	-	-	-	-	-	-	-	-
OUTPUT AT FULL SCALE PRESSURE ⁴	D44R	4.400	4.500	4.600	VDC	E14	E66	EBB	COUNTS HEX
	D44D (P2)	-	-	-	-	-	-	-	-
	D44D (P1)	0.400	0.500	0.600	VDC	147	159	1EBB	COUNTS HEX
ACCURACY ⁴	D44R	-	-	-	± 2.5 mVfs	-	-	-	± 2.5 mVfs
	D44D	-	-	-	-	-	-	-	-
RESPONSE TIME ⁵	D44R	-	8	11	ms	-	8	11	ms
	D44D	-	-	-	-	-	-	-	-
SHOCK (11ms DURATION ANY AXIS)	ALL	-	-	100	G	-	-	100	G
BURST PRESSURE ^{6,7}	L06-L10	-	-	3	psi	-	-	3	psi

MEDIA CAPABILITY, WETTED MATERIALS
 (APPLY CLEAN DRY AIR ONLY)

PRESSURE PORT 2: SILICON DIAPHRAGM, GLASS FILLED NYLON, AND ALUMINA CERAMIC. PORT NOT USED FOR ABSOLUTE DEVICES.

PRESSURE PORT 1: FRONTSIDE OF SILICON DIAPHRAGM, SILICONE GEL PASSIVATION, GLASS FILLED NYLON, ALUMINA.

PARAMETER	DEVICE OUTPUT AND TYPE	ANALOG/DIGITAL OUTPUT			
		MIN	NOM	MAX	UNITS
SUPPLY VOLTAGE	ALL	4.75	5.00	5.25	VDC
COMPENSATED TEMPERATURE RANGE	ALL	0	85	-	°C
STORAGE TEMPERATURE	ALL	-40	125	-	°C

DESIGN UNITS: INCH	DRAWN: CMH	21SEP06	Honeywell
TOLERANCES UNLESS NOTED:	CHECK: AK	21SEP06	
NO PLACE	0.1	FITS DRAWING COPIES & PROPRIETARY ITEM AND IS THE PROPERTY OF HONEYWELL.	PRESSURE SENSOR TITLE DRAWING NAME: ASDXL DIF SERIES CHART 1 SIZE: D TYPE: I DRAWING SCALE: 4:1 SHEET: 1 OF 1
ONE PLACE	0.01	THIS DRAWING IS NOT TO BE COPIED OR USED WITHOUT THE PERMISSION OF HONEYWELL.	
TWO PLACE	0.005		
THREE PLACE	0.0005		
FOUR PLACE	0.00005		
THIRD ANGLE PROJECTION	OTHER HONEYWELL ENGINEERING STANDARDS MAY APPLY		