

# 86

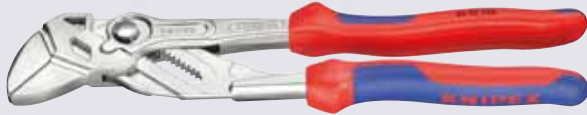
## 86 Plier Wrenches, Plier and Wrench in a single tool

patented

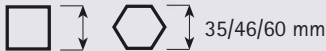
86 03 180



86 05 250



86 03 300



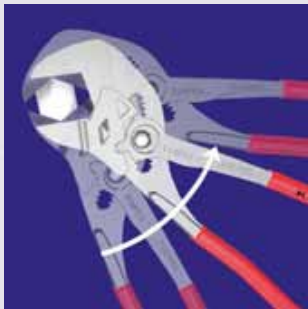
- ▶ excellent for gripping, holding, pressing and bending workpieces
- ▶ for careful installation of finished-surface components
- ▶ zero backlash jaw surface pressure prevents damage to edges of sensitive components
- ▶ fast adjustment directly on the workpiece by pushing a button
- ▶ no unintentional shift of the gripping jaws and no slipping of the joint
- ▶ replaces a complete set of spanners
- ▶ parallel jaws allow infinitely variable gripping of all widths to the specified maximum size
- ▶ the action of the jaws allows screwed connections to be tightened and released quickly using the ratchet principle
- ▶ lever transmission greater than 10 - 1 for strong gripping power
- ▶ also for tile breaking

**KNIPEX** special

The patented Plier Wrench is a multi functional fastening, gripping and holding tool with fast adjustment pushing a button. The high lever ratio, parallel jaws without profile and infinitely variable adjustment guarantee a secure and smooth gripping of the workpiece free from any backlash.



Working on plated fittings without damage of the surface



Works using the ratchet principle

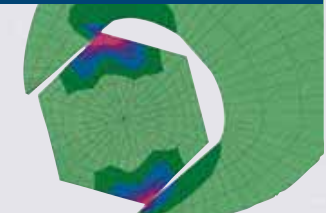


Fast adjustment by pushing a button

Compressive strain areas when force is applied on the Plier Wrench 86 03 250 and a conventional open end wrench



Plier Wrench: zero backlash under pressure



Conventional open end wrench: edge pressure causes surface damage

| Article-No. | EAN-Code | Head   | Handles                | Working Capacities |       |     |
|-------------|----------|--------|------------------------|--------------------|-------|-----|
|             |          |        |                        | Length mm          | mm    | g   |
| 86 03 180   | 028260   | nickel | plastic coated         | 1 3/8              | to 35 | 260 |
| 250         | 022084   | plated |                        | 1 3/4              | to 46 | 540 |
| 300         | 040224   |        |                        | 2 3/8              | to 60 | 725 |
| 86 05 180   | 047162   | nickel | with two-colour        | 1 3/8              | to 35 | 280 |
| 250         | 047841   | plated | dual component handles | 1 3/4              | to 46 | 570 |



86 03 300: enormous pressure and a capacity up to 60 mm/ 2 3/8" allows application even on large size nuts