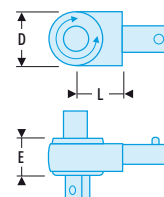
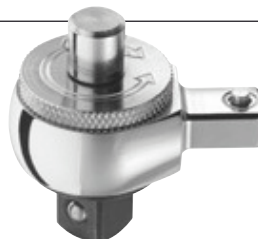


## ► 9 x 12 accessories

## Ratchets

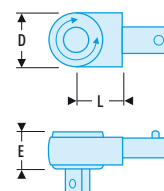
• For use with pivot knob S.305P.

►	Attachement	□ *	D mm	E mm	L mm	ΔΔ g
<b>J.372</b>	9X12	3/8	37	26	15	155
<b>S.372</b>	9X12	1/2	37	26	15	165



## Compact ratchets

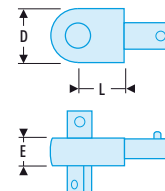
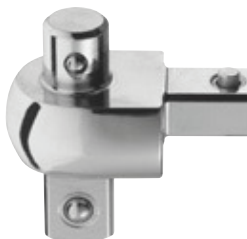
►	Attachement	□ *	D mm	E mm	L mm	ΔΔ g
<b>R.372</b>	9X12	1/4	27	19	15	70
<b>J.372V</b>	9X12	3/8	37	26	15	140
<b>S.372V</b>	9X12	1/2	37	26	15	150



## Square drives

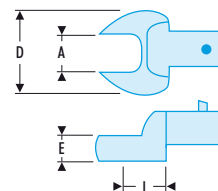
• For use with pivot knob S.305P, except model R.373.

►	Attachement	□ *	E mm	D mm	L mm	ΔΔ g
<b>R.373</b>	9X12	1/4	14	23	15	55
<b>J.373</b>	9X12	3/8	17	26	15	85
<b>S.373</b>	9X12	1/2	17	26	15	100



## 10 Open ends

►	A *	E mm	D mm	L mm	ΔΔ g
<b>10.7</b>	10.1/4	5	19	15	31
<b>10.8</b>	10.5/16	5	19	15	31
<b>10.9</b>		6	25	15	31
<b>10.10</b>	10.3/8	6	25	15	32
<b>10.11</b>	10.7/16	6	25	15	32
<b>10.12</b>		7	31	15	39
<b>10.13</b>	10.1/2	7	31	15	39
<b>10.14</b>	10.9/16	7	31	15	44
<b>10.15</b>		9	37	15	50
<b>10.16</b>	10.5/8	9	37	15	50
<b>10.17</b>	10.11/16	9	37	15	50
<b>10.18</b>		9	39	15	52
<b>10.19</b>	10.3/4	9	40	15	52



## 12 Ring ends

►	E mm	A mm	D mm	L mm	ΔΔ g
<b>12.7</b>	7	7	14	15	31
<b>12.8</b>	7	8	14	15	31
<b>12.9</b>	7	9	14	15	31
<b>12.10</b>	8	10	17	15	32
<b>12.11</b>	8	11	17	15	32
<b>12.12</b>	10	12	20	15	38
<b>12.13</b>	10	13	20	15	38
<b>12.14</b>	11	14	23	15	43
<b>12.15</b>	11	15	23	15	43
<b>12.16</b>	12	16	27	15	50
<b>12.17</b>	12	17	27	15	50
<b>12.18</b>	13	18	29	15	53
<b>12.19</b>	13	19	29	15	53

