

# Cooper Tools



Utica®

TORQUE PRODUCTS

  
**COOPER** Tools

# Table of Contents

---

## Torque Products

<b>Model Number Index</b> .....	2
<b>ISO-9001 "Quality System Certified"</b> .....	3
<b>Utica Torque Products Introduction</b> .....	4
<b>Torque Limiting Screwdrivers Introduction</b> .....	6
Standard Models, Accessories & Kits .....	8
Miniature Models, Accessories & Kit .....	10
<b>Click Type Torque Sensing Wrenches Introduction</b> .....	12
Ratchet Head, Flex Head Ratchet, Plain Head & Preset Models .....	14
Interchangeable Head "A" Size Models .....	16
Interchangeable Head "B" Size Series .....	18
<b>Dial Indicating Torque Wrenches</b> .....	20
<b>Beam Type Torque Wrenches</b> .....	21
<b>TA4 Torque Analyzers</b> .....	22
<b>Torque Multipliers</b> .....	23
<b>General Accessories</b> .....	24
<b>Conversion Tables</b> .....	25
<b>Website Information</b> .....	26
<b>Service</b> .....	27

### Torque Wrench Cautions

1. Do not use torque wrench to loosen tightened fasteners beyond maximum tool capacities.
2. Never use an extension unless authorized by the manufacturer.
3. Torque wrenches are precision instruments – provide adequate storage to protect from damage.  
RETURN MICROMETER WRENCHES TO LOWEST SETTING AFTER EACH USE.
4. ALWAYS WEAR APPROVED EYE PROTECTION.

# New Torque Products

## Torque Limiting Screwdrivers

- New metric scale (Nm)

New	Replaces	Page
TS-3m	TS-30CM	.8



## Click Type Adjustable Ratchet Wrenches

- New ergo handles
- Metric (Nm) scale designed for automotive industry

New	Replaces	Page
TCM-75R	New!	.15
TCM-75R-1/2	New!	.15
TCM-150R	New!	.15



## Preset Interchangeable Head Wrenches

- New ergo handles
- Nickel plated arms
- Model number reflects maximum torque capacity

New	Replaces	Page
CHA-11	CHA-5	.16
CHA-23	CHA-7	.16
CHB-55	CHB-7	.18
CHB-85	CHB-9	.18
CHB-110	CHB-11	.18
CHB-170	CHB-13	.18
CHB-225	CHB-15	.18



## Dial Indicating Torque Wrenches

- New Nm/ft.-lb. and Nm/in.-lb. dual scales
- Model number reflects maximum torque capacity

New	Replaces	Page
DA-3	DA 130M	.20
DA-8	DA 175M	.20
DA-16	DA 2150M	.20
DA-35	DA 2300M	.20
DA-70	DA 2600M	.20
DA-70F	DA 250FM	.20
DA-140F	DA 3100FM	.20
DA-240F	DA 3175FM	.20
DA-320F	DA 3250FM	.20
DA-480F	DA 4300FM	.20
DA-820F	DA 4600FM	.20



# Model Number Index

Model	Page	Model	Page	Model	Page	Model	Page	Model	Page
• 825	9,17,19	28715-04	11	HX 52	17	MB 224	19	TA4-05F-1	22
• 838	17,19	28715-05	11	HX 62	17	MB 62	17	TA4-05F-2	22
• 858	19	28715-06	11	HX 72	17	MB 72	17	TA4-10B-1	22
1104	9	28715-07	11	HX 82	17	MB 82	17	TA4-10B-2	22
1105	9	• 30mm17	19	HX 92	17	MB 92	17	TA4-25F-1	22
1106	9	• 44-71	9	• KT-100	9	MO 102	17	TA4-25F-2	22
• 1108	9,17	• 440-3X	9	• KT-130	9	MO 112	17	• TCI-150	15
• 1110	9,17	445-00X	9	• KT-30	9	MO 122	17	• TCI-150-3/8	15
• 1112	9,17	445-0X	9	• KTT-1	11	MO 124	19	• TCI-150FN	15
• 1114	9,17	445-10X	9	• KTT-SN1	11	MO 132	17	• TCI-150FRD	15
• 3108	17,19	445-20X	9	LB 102	17	MO 134	19	• TCI-150FRN	15
• 3110	17,19	445-30X	9	LB 122	17	MO 142	17	• TCI-150RA	15
• 3112	17,19	• 446-0X	9	LB 142	17	MO 144	19	• TCI-150RA-3/8	15
• 3114	17,19	• 446-1X	9	LB 162	17	MO 152	17	TCI-1600	15
• 3116	17,19	• 446-2X	9	LB 164	19	MO 154	19	TCI-1600R	15
• 3118	17,19	• 6mm11	9,17	LB 182	17	MO 164	19	• TCI-250FRN	15
• 3120	17,19	• 7mm11	9,17	LB 184	19	MO 174	19	• TCI-250R	15
• 5110	19	• 8mm11	9,17	LB 202	17	MO 184	19	TCI-600FRN	15
5112	19	01-9201	22	LB 204	19	MO 194	19	TCI-7250R	15
• 5114	19	01-9202	22	LB 222	17	MO 204	19	TCI-750	15
• 5116	19	01-9205	22	LB 224	19	MO 224	19	• TCI-750R	15
• 5118	19	01-9232	22	LB 242	17	MO 62	17	TCI-750R-1/2	15
• 5120	19	01-9233	22	LB 244	19	MO 72	17	TCI-75FN	15
• 5122	19	01-9240	22	LB 264	19	MO 82	17	• TCI-75FRN	15
• 5124	19	01-9242	22	LB 284	19	MO 92	17	• TCM-75R	15
7120	19	• A253KR	15	LB 304	19	• OP 102	17	• TCM-75R-1/2	15
7124	19	• B2600	21	LB 324	19	• OP 112	17	• TCM-150R	15
7128	19	• CH-150	16	LB 344	19	• OP 122	17	TMX1000F	23
7130	19	• CH-150F	18	LB 364	19	• OP 142	17	TMX12000F	23
7132	19	CH-1800	15	LB 72	17	• OP 162	17	TMX2000F	23
• 28522	17	• CH-75F	18	LB 82	17	OP 164	19	TMX2000FR	23
• 28523	19	• CHA-11	16	LF 122	17	• OP 182	17	TMX3000F	23
• 10mm11	9,17	• CHA-23	16	LF 142	17	OP 184	19	TMX4000F	23
• 10mm13	17,19	• CHB-110	18	LF 162	17	• OP 202	17	TMX8000F	23
• 11mm13	17,19	CHB-170	18	LF 164	19	OP 204	19	• TS-100	8,9
• 12mm13	17,19	CHB-225	18	LF 182	17	OP 222	17	• TS-30	8,9
• 13mm13	17,19	• CHB-55	18	LF 184	19	OP 224	19	TS-3M	8
• 13mm15	19	CHB-85	18	LF 202	17	• OP 242	17	• TS-35	8
• 14mm13	17,19	DA-3	20	LF 204	19	OP 244	19	• TS-SN-1	8
• 14mm15	19	• DA-8	20	LF 222	17	OP 264	19	• TS-SN-2	8
• 15mm13	17,19	• DA-16	20	LF 224	19	• OP 284	19	• TT-1	10,11
• 15mm15	19	• DA-35	20	LF 242	17	OP 304	19	TT-SN-1	10
• 16mm13	17,19	• DA-70F	20	LF 244	19	OP 324	19	TW0	11
• 16mm15	19	• DA-70	20	LF 284	19	OP 344	19	TW10D	11
• 17mm15	19	• DA-140F	20	LF 324	19	OP 364	19	TW11D	11
185-000X	9	• DA-240F	20	LF 364	19	OP 384	19	TW12D	9,11
185-00X	9	• DA-320F	20	• M-825	9,17,19	OP 404	19	TW13D	9,11
• 185-0X	9	DA-480F	20	• M-838	17,19	OP 42	17	TW14D	11
• 185-10X	9	DA-4350FMPC	20	M-858	19	• OP 52	17	TW15D	11
• 185-1X	9	DA-820F	20	MB 102	17	• OP 62	17	TW16D	11
• 185-2X	9	EX-254	17,19	MB 112	17	• OP 72	17	TW1D	11
• 185-10X	9	• EX-372	17	MB 122	17	• OP 82	17	TW2D	11
185-3X	9	• EX-375	19	MB 124	19	PS 122	17	TW3D	9,11
185-4X	9	• EX-503	17,19	MB 132	17	PS 82	17	TW4D	9,11
• 18mm15	19	EX-623	19	MB 134	19	• R702KR	15	TW5D	11
• 19mm15	19	• EX-751	19	MB 142	17	RS 122	17	TW6D	9,11
19mm17	19	FH-150FRN	15	MB 144	19	• RS 124	19	TW7D	9,11
• 21mm17	19	HW-19	9	MB 152	17	• RS 164	19	TW8D	11
• 21mm15	19	HW-20	11	MB 154	19	RS 82	17	TW9	11
22mm17	19	• HX 102	17	MB 164	19	• T153KR	15	• V152KR	15
24mm17	19	• HX 122	17	MB 174	19	• T154KR	15	• V702KR	15
28715-01	11	HX 142	17	MB 184	19	• T702KR	15		
28715-02	11	HX 162	17	MB 194	19	TA4-05B-1	22		
28715-03	11	HX 42	17	MB 204	19	TA4-05B-2	22		

• Denotes a Rapid Select item.  Refer to page 5 for description of Rapid Select.

CooperTools Division has attained ISO 9001 Quality System Certification for eight of our facilities. The driving force behind the implementation of the Quality System is the commitment "to provide our customers with the **best value delivered** by offering only products and services **that meet or exceed their expectations**".



Lexington, South Carolina



Dayton, Ohio



Hicksville, Ohio



Springfield, Ohio



Westhausen, Germany



Ozoir-la-Ferrière, France



Houston, Texas



# Utica® Torque Products

## Introduction



Utica products offer high quality solutions for your torque applications ranging from torque screwdrivers, click-, dial- and beam wrenches, to electronic torque analyzers. Utica products add value to the assembly process by enabling you to assess, control and improve product reliability, which leads to customer satisfaction. Whether the application is cellular phone assembly involving fine threaded screws or an automotive assembly operation fastening bolts, Utica torque products are the right choice.



### Quality

Our goal is to provide high quality torque tools that will maintain accuracy as long as possible. All Utica torque products are made of top grade materials. Working parts are heat treated for added strength and durability. Each Utica torque tool is calibrated according

to ASME B107.14M before leaving the plant, using test equipment traceable to NIST. Certification may be provided with each tool for a nominal charge. CooperTools manufacturing processes are ISO 9001 certified, which means that the Utica brand is manufactured to the highest standards.

### Warranty

Torque Products (excluding accessories) are warranted as follows:

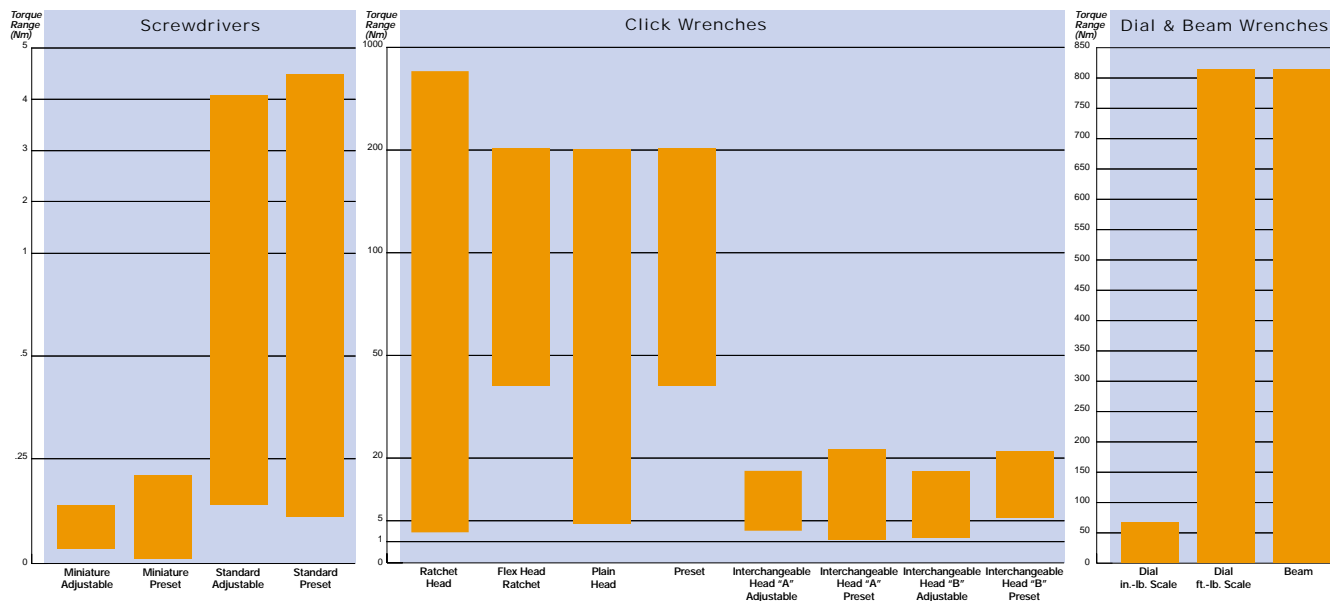
- Product** – One (1) year from date of purchase to be free of defects in materials and workmanship.
- Calibration** – Ninety (90) days from date of purchase.



This warranty does not extend to any product, which has been altered or abused.

### Calibration Intervals

As a general rule, we recommend calibrating Utica torque products every six months. However, accurate calibration intervals need to be based on quality objectives, number of



cycles and other application related details.  
 To locate your nearest Utica Service Center for calibration, simply visit our website at [www.uticatools.com](http://www.uticatools.com).

### Rapid Select Means Fast Delivery

Models indicated with the Rapid Select icon represent our most popular tools, and are available for fast delivery in limited quantities.



### Ordering Information

Utica products are distributed world-wide. To locate your nearest Utica distributor, visit our website at [www.uticatools.com](http://www.uticatools.com) or contact us at (937) 222-7871 or fax (937) 228-0422.

### What Is Torque?

The concept of torque is a mystery for many people. Ask a group of people to define torque and you'll probably receive a variety of answers. Open a dictionary to the definition of torque and you'll be greeted with terms such as torsion, axis, and vector. However, if the definition of torque is boiled down to layman's terms, it is the measurement of a turning or twisting force. A simple example is the force required to turn the head of a bolt on an automobile chassis. Most tool boxes would include some of the most common tools used to apply torque, such as screwdrivers, wrenches, and impact tools.

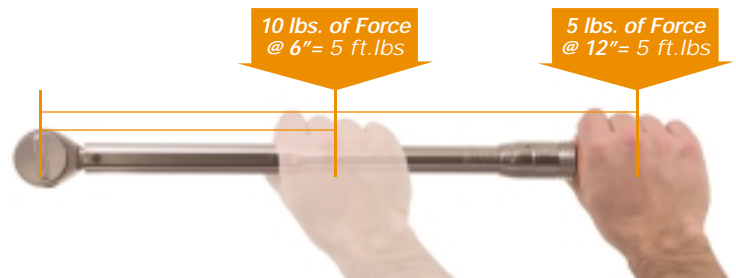


When torque is applied to the head of a bolt during a fastening process, there are actually two main forces at work. First, we are applying a force - torque to the bolt head to tighten it. The second force at work is the tension or stretch created that runs the length of the bolt.

These two forces are closely related. The more torque applied to the bolt head, the more tension or "stretch" is applied to the length of the bolt.

### Why Is Torque Important?

When we apply torque to fasteners such as bolts and screws, we are actually clamping parts together. The amount of torque applied determines how well the fastener does its job in the long run. If we apply too little torque, the fastener can vibrate and eventually loosen. On the other hand, if we apply too much torque, the fastener will over stress and can break or strip the threads. Either way, the fastener doesn't do what its suppose to do - hold something together. The objective is to apply enough torque to a fastener, creating tension that is greater than any external force trying to separate it.



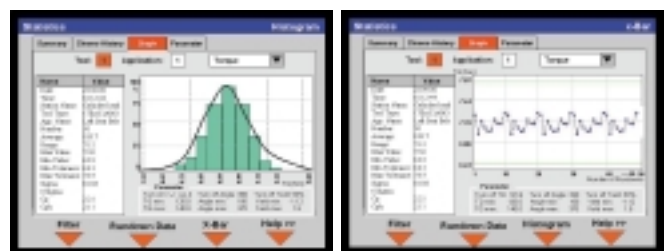
### How Is Torque Measured?

Torque is measured by multiplying the amount of force applied by the distance from the point we are turning. For instance, if we are turning a bolt and apply 5 lbs. of force at the end of a wrench measuring 1 ft., the torque would equal 5 ft. lbs. This doesn't tell us what the optimal torque is for the fastener, but it does allow us to quantify the amount of torque we are applying to a fastener.

### What Is The Correct Torque Level For A Fastener?

When an engineer calculates the correct torque level for a fastener, several issues must be addressed. The first issue is the maximum load that the fastener will experience. Second is the strength of the material that the fastener will clamp. Third is whether the joint is hard or soft. The fourth issue is the nature of the external force acting on the joint, such as vibration, pulling, or twisting.

Through statistical analysis, an engineer can determine the optimal level of torque that should be applied to a joint for maximum performance.



# Utica® Torque Limiting Screwdrivers

## Introduction

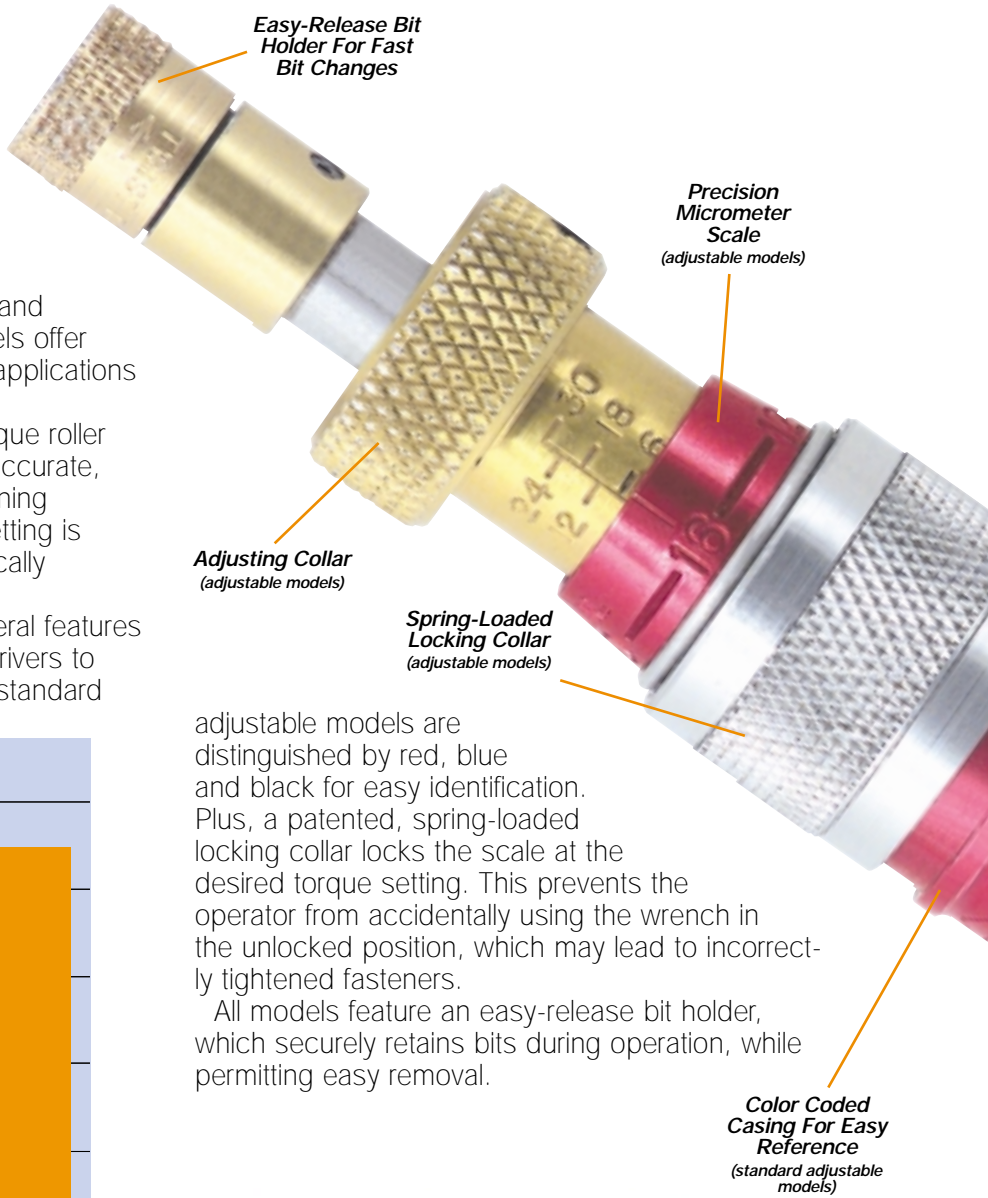


### Torque Limiting Screwdrivers

Utica offers a complete line of torque limiting screwdrivers covering a range of 2-640 in.-oz. All Utica screwdrivers feature aluminum housings to reduce weight and maximize durability. Six standard models are available for light duty torque applications including general electronic and computer assembly. Two miniature models offer reliable fastening of the very smallest of applications such as cellular phone assembly.

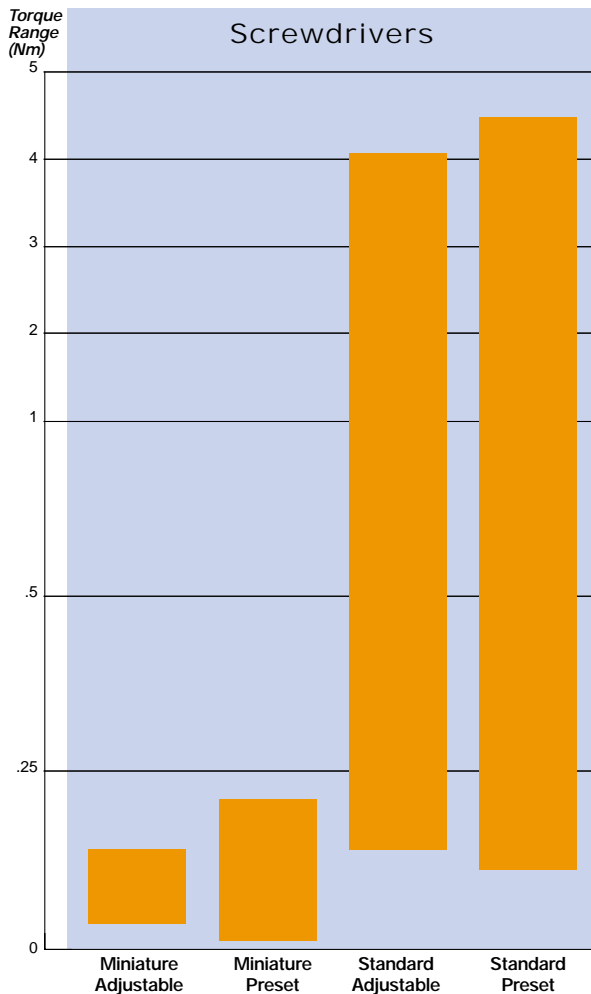
Utica torque screwdrivers feature a unique roller bearing cam, which produces smooth, accurate, and consistent performance when tightening fasteners. When the maximum torque setting is achieved, the cam mechanism automatically slips to prevent over-tightening.

In addition to being highly durable, several features have been engineered into Utica screwdrivers to increase ease of use. Each of the three standard



adjustable models are distinguished by red, blue and black for easy identification. Plus, a patented, spring-loaded locking collar locks the scale at the desired torque setting. This prevents the operator from accidentally using the wrench in the unlocked position, which may lead to incorrectly tightened fasteners.

All models feature an easy-release bit holder, which securely retains bits during operation, while permitting easy removal.





## Quality

Electronics assembly and other light screw assembly applications demand precision that can only be accomplished with the use of precision tools.

All Utica torque screwdrivers are made of top grade materials which are machined to exacting tolerances. Working parts are heat treated for added strength and durability. Then, each tool is carefully assembled by our experienced technicians.

Each Utica screwdriver is calibrated according to ASME B107.14M before leaving the plant, using test equipment traceable to NIST.

CooperTools manufacturing processes are ISO 9001 certified, which



means that Utica products are manufactured to the highest standards. Quality materials, precision machining and assembly is what makes Utica torque screwdrivers the tool of choice.

## Calibration Intervals

As a general rule, we recommend calibrating Utica torque products every six months. However, the quality objectives of the operator's organization will ultimately determine the frequency of tool calibration.

To locate your nearest Utica Service Center for calibration, visit our website at

[www.uticatools.com](http://www.uticatools.com).



# Utica® Torque Limiting Screwdrivers

## Standard Models



- Standard product calibrated right hand only. Left hand calibration on request.
- Choice of adjustable models with precision micrometer scale or factory preset models.
- U.S. Standard or metric scales
- Precision micrometer scale (adjustable models) calibrated in inch-ounces or inch-pounds. Metric models: cm-kg.
- Easy-release bit holders securely retain bits during operation while permitting easy removal.
- Anti-backlash design for repeatability.
- Meets or exceeds ASME B107.14M and ISO 6789 specifications.
- Adjustable model accuracy is  $\pm 6\%$  of setting, starting at 20% of full scale to full scale. Right hand only.
- Preset models accuracy  $\pm 4\%$  right hand only.

### Adjustable Models

Model No.	Range	Collar Color	Increments	Hex Drive	Weight	
					lbs.	kg.

#### U.S. Standard

TS-100	20–100 in.-oz.	Black	2 in.-oz.	1/4 Female	.50	.23
TS-30	6–30 in.-lb.	Red	1 in.-lb.	1/4 Female	.50	.23
TS-35	6–36 in.-lb.	Blue	1 in.-lb.	1/4 Female	.50	.23

#### Metric

TS-3M*	.7–3.5 Nm	Gold	.1 Nm	1/4 Female	.50	.23
--------	-----------	------	-------	------------	-----	-----

\*See page 1 for description of model change.

If calibration certification is required, request at time of purchase.

### Preset Models (Preset models are designed for highly repetitive assembly line operations.)

Model No.	Range				Hex Drive
	in.-oz.	in.-lb.	Nm	cm-kg	
TS-SN-1	10–150	1–10	.1–1.1	1–12	1/4 Female
TS-SN-2	64–640	4–40	.5–4.5	5–45	1/4 Female

If calibration certification is required, request at time of purchase.

NOTE: When ordering preset tools, specify desired torque setting.



TS-30

TS-SN-1

# Utica® Torque Limiting Screwdrivers

## Standard Model Accessories & Kits

### Hex Bits



Part No.	Hex Size	Cap Screw Size	Set Screw Size	Flathead Screw Size
185-000X	050	0	3,4	1,2
185-00X	1/16	1	5,6	3,4
185-0X	5/64	2,3	8	5,6
185-1X	3/32	4,5	10	8
185-9X	7/64	6	-	-
185-2X	1/8	-	1/4	10
185-10X	9/64	8	-	-
185-3X	5/32	10	5/16	1/4
185-4X	3/16	1/4	3/8	-

### Phillips Bits



Part No.	Point Size	Screw Size
446-0X	0	0,1
446-1X	1	2,3,4
446-2X	2	5,6,7,8,10
440-3X	3	12,14

### Screwdriver Bits



Part No.	Blade Width	Blade Thickness	Screw Size
445-00X	.134	.028	2,3
445-0X	.155	.030	3,4
445-10X	.185	.034	4,5
445-20X	.214	.036	5,6
445-30X	.250	.040	6,8

### Square Drive Adapter



Part No.	Description
44-71-B	1/4 Hex to 1/4 Square.

### Bit Holders



Part No.	Square Drive (in.)	Female Hex (in.)	
825	1/4	1/4	
M-825	1/4	1/4	Magnetic

### SAE Size Sockets



Part No.	Square Dr. (in.)	Hex Opening (in.)
1108	1/4	1/4
1110	1/4	5/16
1112	1/4	3/8
1114	1/4	7/16

### Metric Size Sockets

Part No.	Square Dr. (in.)	Hex Opening (mm)
6mm11	1/4	6mm
7mm11	1/4	7mm
8mm11	1/4	8mm
10mm11	1/4	10mm

### Miniature Bit Holders



Part No.	Description
HW-19	To adapt miniature accessories for use in standard models. See page 11 for accessories.

### Kit No. KT-100 (Formerly Kit 1) Range 20-100 in.-oz. 20 piece

Part No.	Qty.	Comp.	Description
1 TS-100	1		Adj. torque screwdriver 1/4" fm. hex
1 TW3D	1		Torque screwdriver bld. .000
1 TW4D	1		Torque screwdriver bld. .100
1 TW6D	1		Hex socket 3/32"
1 TW7D	1		Hex socket 7/64"
1 TW12D	1		Hex key .028
1 TW13D	1		Hex key .035
1 185-000X	1		Screwdriver hex bit .050
1 185-00X	1		Screwdriver hex bit 1/16"
1 185-0X	1		Screwdriver hex bit 5/64"
1 445-00X	1		Screwdriver bld. torque screw SZ. 2, 3
1 445-10X	1		Screwdriver bld. torque screw SZ. 4, 5
1 446-0X	1		Phillips bld. torque screw SZ. 0, 1
1 446-1X	1		Phillips bld. torque screw SZ. 2, 3, 4
1 44-71-B	1		Adapter 1/4" drive
1 HW19	1		Bit holder mini. torque
1 1104	1		1/4" Dr. reg. socket 1/8"
1 1106	1		1/4" Dr. reg. socket 3/16"
1 Plas/case	1		
1 Insert	1		

### Kit No. KT-30 (Formerly Kit 2) Range 6 to 30 in.-lb. 24 piece

Part No.	Qty.	Comp.	Description
1 TS-30	1		Adj. torque screwdriver 1/4" fm. hex
1 TW4D	1		Torque screwdriver bld. .100
1 TW7D	1		Hex socket 7/64"
1 TW13D	1		Hex key .035
1 185-000X	1		Screwdriver hex bit .050
1 185-00X	1		Screwdriver hex bit 1/16"
1 185-0X	1		Screwdriver hex bit 5/64"
1 185-1X	1		Screwdriver hex bit 3/32"
1 185-2X	1		Screwdriver hex bit 1/8"
1 185-3X	1		Screwdriver hex bit 5/32"
1 445-00X	1		Screwdriver bld. torque screw SZ. 2, 3
1 445-10X	1		Screwdriver bld. torque screw SZ. 4, 5
1 445-20X	1		Screwdriver bld. torque screw SZ. 5, 6
1 445-30X	1		Screwdriver bld. torque screw SZ. 6, 8
1 446-0X	1		Phillips bld. torque screw SZ. 0, 1
1 446-1X	1		Phillips bld. torque screw SZ. 2, 3, 4
1 44-71-B	1		Adapter 1/4" drive
1 HW19	1		Bit holder mini. torque
1 1104	1		1/4" Dr. reg. socket 1/8"
1 1106	1		1/4" Dr. reg. socket 3/16"
1 1108	1		1/4" Dr. reg. socket 1/4"
1 1110	1		1/4" Dr. reg. socket 5/16"
1 Plas/case	1		
1 Insert	1		

### Kit No. KT-130 (Formerly Kit 3) Range 20 in.-oz. to 30 in.-lb. 43 piece

Part No.	Qty.	Comp.	Description
1 TS-30	1		Adj. torque screwdriver 1/4" fm. hex
1 TS-100	1		Adj. torque screwdriver 1/4" fm. hex
1 TW3D	1		Torque screwdriver bld. .080
2 TW4D	2		Torque screwdriver bld. .100
1 TW6D	1		Hex socket 3/32"
2 TW7D	2		Hex socket 7/64"
1 TW12D	1		Hex key .028
2 TW13D	2		Hex key .035
2 185-000X	2		Screwdriver hex bit .050
2 185-00X	2		Screwdriver hex bit 1/16"
2 185-0X	2		Screwdriver hex bit 5/64"
1 185-1X	1		Screwdriver hex bit 3/32"
1 185-2X	1		Screwdriver hex bit 1/8"
1 185-3X	1		Screwdriver hex bit 5/32"
2 445-00X	2		Screwdriver bld. torque screw SZ. 2, 3
2 445-10X	2		Screwdriver bld. torque screw SZ. 4, 5
1 445-20X	1		Screwdriver bld. torque screw SZ. 5, 6
1 445-30X	1		Screwdriver bld. torque screw SZ. 6, 8
2 446-0X	2		Phillips bld. torque screw SZ. 0, 1
2 446-1X	2		Phillips bld. torque screw SZ. 2, 3, 4
1 446-2X	1		Phillips bld. torque screw SZ. 4, 6, 7, 8, 10
2 44-71-B	2		Adapter 1/4" drive
2 HW19	2		Bit holder mini. torque
1 1104	1		1/4" Dr. reg. socket 1/8"
1 1105	1		1/4" Dr. reg. socket 5/32"
2 1106	2		1/4" Dr. reg. socket 3/16"
1 1108	1		1/4" Dr. reg. socket 1/4"
1 1110	1		1/4" Dr. reg. socket 5/16"
1 Plas/case	1		
1 Insert	1		



Kit KT-130

Refer to page 4 for description of Rapid Select.

**CAUTION:** 1. Under normal use, periodic recalibration may be necessary to ensure accurate readings and applied torque.  
2. FOR EXTENDED SPRING LIFE, RETURN TO LOWEST SETTING AFTER EACH USE.



# Utica® Torque Limiting Screwdrivers

## Miniature Models & Accessories



- Specifically designed for reliable tightening of the very smallest threaded fasteners.
- Largest model weighs only 1 oz.
- Operate in same manner as standard models — reach set torque and slip to prevent over-torquing of delicate components.
- Accuracy  $\pm 6\%$ , right hand only. Meets or exceeds ASME B107.14M and ISO 6789 specifications.
- Choice of micrometer adjustable or factory preset models.

### Adjustable Models

Model No.	Range	Increments	Drive	Length		Weight	
				in.	mm	lbs.	kg

#### U.S. Standard

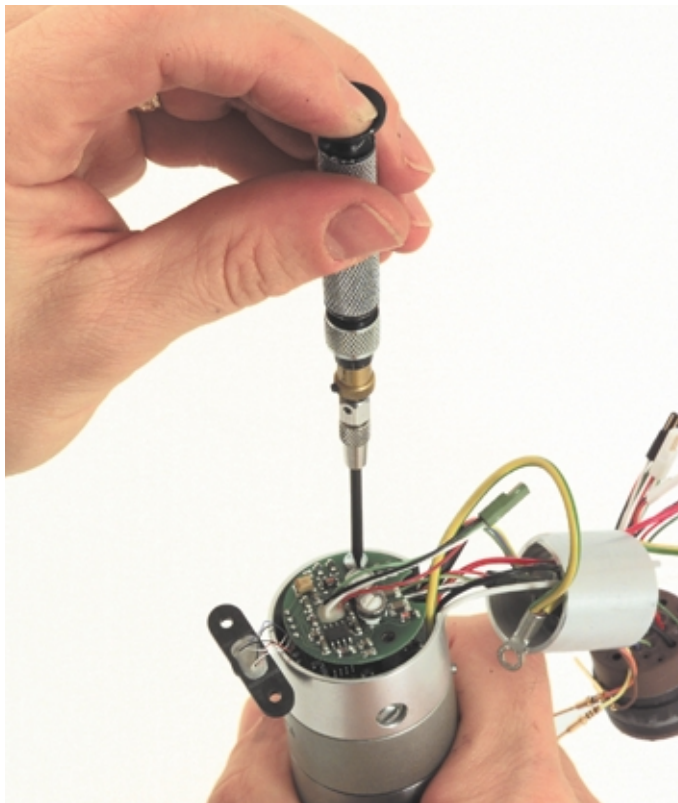
TT-1 5–20 in.-oz. 1/4 in.-oz. Univ. 3.625 92 .06 .03

Calibration certification must be requested at time of purchase.

### Preset Models

Model No.	Range			Drive	Length		Weight	
	in.-oz.	Nm	cm-kg		in.	mm	lbs.	kg
TT-SN-1	2–30	.07–2.0	.1–2	Univ.	3.625	92	.06	.03

Calibration certification must be requested at time of purchase.



TT-1

TT-SN-1

# Utica® Torque Limiting Screwdrivers

## Miniature Model Accessories & Kit



### Slotted Bits

Part No.	Blade Width	Blade Thick.	Screw Size
TW0	.040	.004	0000, 000
TW1D	.055	.006	0000, 000
TW2D	.070	.006	000, 00
TW3D	.080	.008	00, 0, 1
TW4D	.100	.010	0, 1, 2



### Hex Sockets

Part No.	Hex Size	Screw Size	Nut Size
TW5D	5/64	000, 00	000, 00
TW6D	3/32	0	-
TW7D	7/64	1	-
TW8D	1/8	2	-
TW9	5/32	-	0, 1



### Phillips Bits

Part No.	Point Size	Screw size
TW10D	0	0, 1
TW11D	1	2, 3, 4

### Miniature Kit No. KTT-SN-1

Range 2-30 in.-oz. 29 piece

Qty.	Part No. Comp.	Description
1	TT-SN-1	Adj. torque screwdriver
1	TW0	Torque screwdriver bld. .040
1	TW1D	Torque screwdriver bld. .055
1	TW2D	Torque screwdriver bld. .070
1	TW3D	Torque screwdriver bld. .080
1	TW4D	Torque screwdriver bld. .100
1	TW10	Phillips screwdriver SZ. 0,1
1	TW11D	Phillips screwdriver SZ. 2,3,4
1	28715-01	Spline key size .048 - 4 Flutes
1	28715-02	Spline key size .048 - 6 Flutes
1	28715-03	Spline key size .060 - 6 Flutes
1	28715-04	Spline key size .069 - 6 Flutes
1	28715-05	Spline key size .072 - 6 Flutes
1	28715-06	Spline key size .076 - 4 Flutes
1	28715-07	Spline key size .096 - 6 Flutes
2	HW20	Bit holder universal torque
1	TW5D	Hex socket 5/64"
1	TW6D	Hex socket 3/32"
1	TW7D	Hex socket 7/64"
1	TW8D	Hex socket 1/8"
1	TW9	Hex socket 5/32"
1	TW12D	Hex key .028
1	TW13D	Hex key .035
1	TW14D	Hex key .050
1	TW15D	Hex key 1/16
1	TW16D	Hex key 5/64
1	Case	
1	Insert	

Miniature Kit KTT-SN-1



### Hex Keys

Part No.	Hex Size	Cap Screw Size	Set Screw Size	Flathead Screw Size
TW12D	.028	-	0	-
TW13D	.035	-	1, 2	0
TW14D	.050	0	3, 4	1, 2
TW15D	1/16	1	5, 6	3, 4
TW16D	5/64	2, 3	8	5, 6



### Spline Keys

Part No.	Spline Size	No. of flutes
28715-01	.048	4
28715-02	.048	6
28715-03	.060	6
28715-04	.069	6
28715-05	.072	6
28715-06	.076	4
28715-07	.096	6

### Miniature Kit No. KTT-1

Range 5-20 in.-oz. 29 piece

(Formerly Kit TT-1-4A)

Qty.	Part No. Comp.	Description
1	TT-1	Adj. torque screwdriver
1	TW0	Torque screwdriver bld. .040
1	TW1D	Torque screwdriver bld. .055
1	TW2D	Torque screwdriver bld. .070
1	TW3D	Torque screwdriver bld. .080
1	TW4D	Torque screwdriver bld. .100
1	TW10	Phillips screwdriver SZ. 0,1
1	TW11D	Phillips screwdriver SZ. 2,3,4
1	28715-01	Spline key size .048 - 4 Flutes
1	28715-02	Spline key size .048 - 6 Flutes
1	28715-03	Spline key size .060 - 6 Flutes
1	28715-04	Spline key size .069 - 6 Flutes
1	28715-05	Spline key size .072 - 6 Flutes
1	28715-06	Spline key size .076 - 4 Flutes
1	28715-07	Spline key size .096 - 6 Flutes
2	HW20	Bit holder universal torque
1	TW5D	Hex socket 5/64"
1	TW6D	Hex socket 3/32"
1	TW7D	Hex socket 7/64"
1	TW8D	Hex socket 1/8"
1	TW9	Hex socket 5/32"
1	TW12D	Hex key .028
1	TW13D	Hex key .035
1	TW14D	Hex key .050
1	TW15D	Hex key 1/16
1	TW16D	Hex key 5/64
1	Case	
1	Insert	

Miniature Kit KTT-1



Refer to page 4 for description of Rapid Select.

**CAUTION:** 1. Under normal use, periodic recalibration may be necessary to ensure accurate readings and applied torque.  
2. FOR EXTENDED SPRING LIFE, RETURN TO LOWEST SETTING AFTER EACH USE.



# Utica® "Click" Type Torque Sensing Wrenches

## Introduction

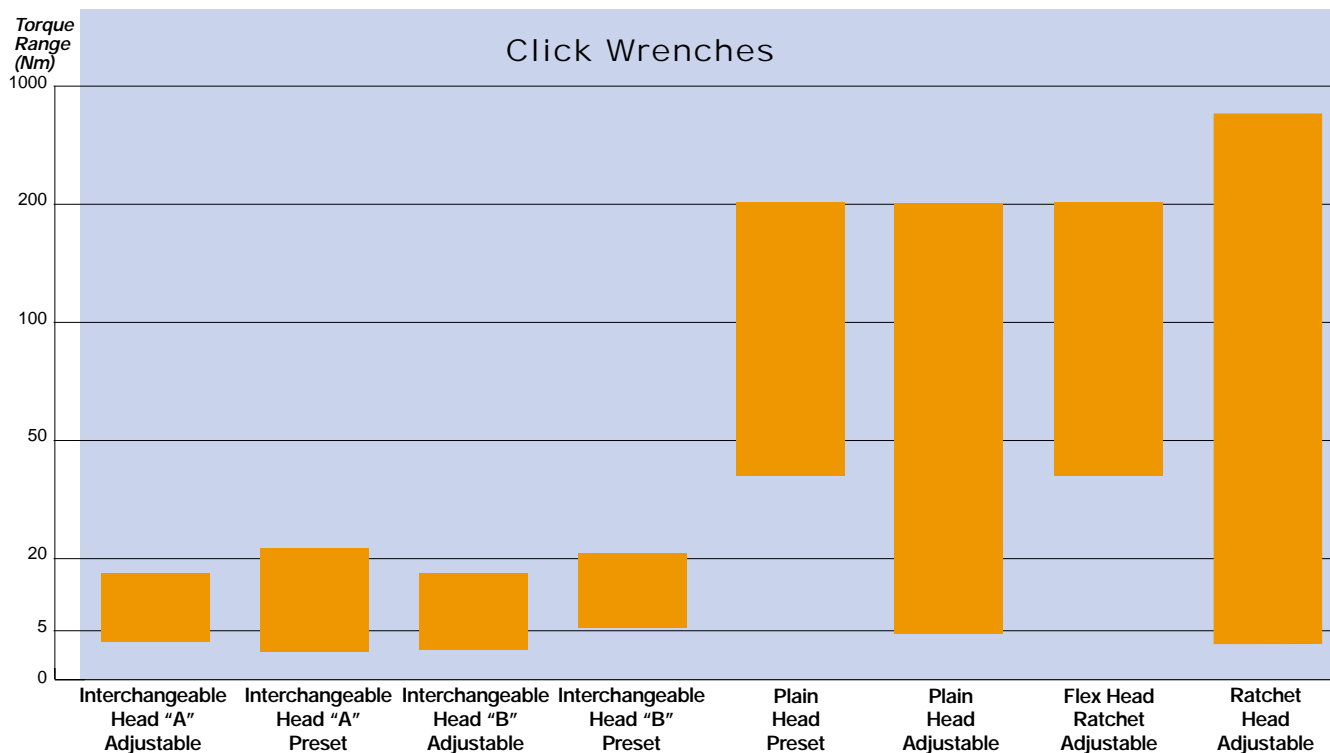


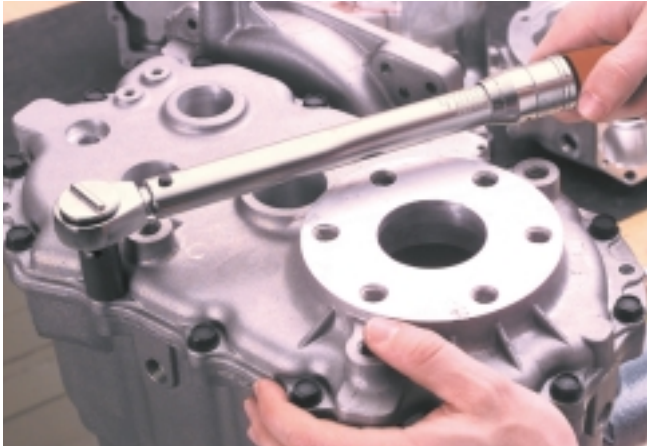
Utica click style torque wrenches are built to exacting standards to maintain maximum accuracy. Only top grade materials are used in Utica click wrenches. Working parts are heat-treated to increase durability and service life. Each wrench is tested with equipment traceable to NIST standards. Because of a high commonality of parts, the procedures for calibrating Utica click wrenches are the same from the smallest to the largest wrench in our product offering. This saves the operator time and the expense of developing specific procedures for different wrench sizes.

Utica's audible "click" plus a few degrees of travel provides a simple, quick indication that the operator has achieved the predetermined torque setting. All Utica click wrenches incorporate a patented, low friction torque control mechanism that produces highly accurate readings in clockwise and counter-clockwise directions. Plus, a patented, spring-loaded locking collar locks the scale on the desired torque setting. This prevents the operator from accidentally using the wrench in the unlocked position.

## Calibration Intervals

As a general rule, we recommend calibrating Utica torque products every six months. However, the quality objectives of the operator's organization will ultimately determine the frequency of tool calibration. Visit our website at [www.uticatools.com](http://www.uticatools.com) to locate your nearest Utica Service Center for calibration.





## Ratchet Head Wrenches

Ratchets are mainly used in maintenance and assembly applications and provide fastening in both clockwise and counter-clockwise directions. A quick shift lever allows for easy single-hand shifting.

## Flex Head Ratchet Wrenches

Flex head ratchets are designed to reach difficult locations with a pivot movement of 15° up or down. Like standard ratchets, flex head ratchets can be used in clockwise or counter-clockwise directions.

## Plain Head Wrenches

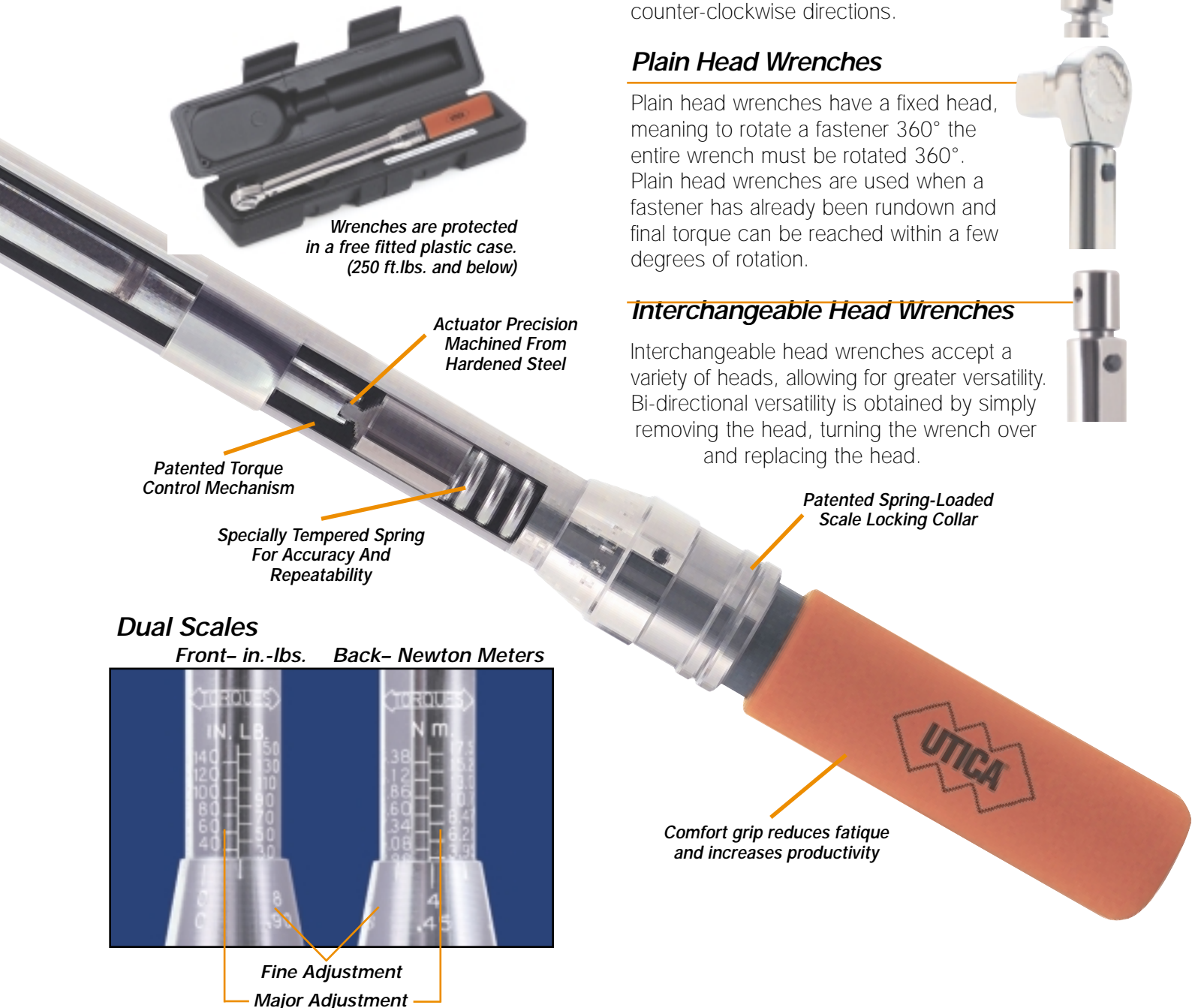
Plain head wrenches have a fixed head, meaning to rotate a fastener 360° the entire wrench must be rotated 360°. Plain head wrenches are used when a fastener has already been rundown and final torque can be reached within a few degrees of rotation.

## Interchangeable Head Wrenches

Interchangeable head wrenches accept a variety of heads, allowing for greater versatility. Bi-directional versatility is obtained by simply removing the head, turning the wrench over and replacing the head.



Wrenches are protected in a free fitted plastic case. (250 ft.lbs. and below)



Actuator Precision Machined From Hardened Steel

Patented Torque Control Mechanism

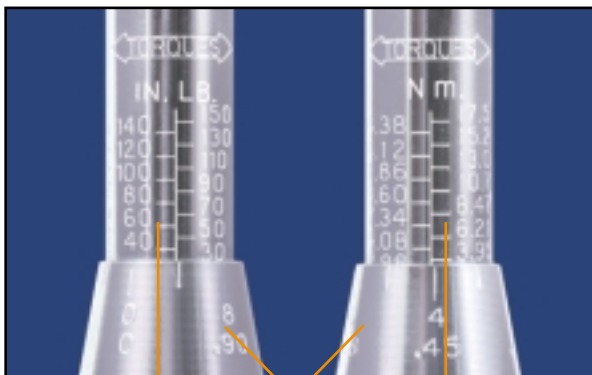
Specially Tempered Spring For Accuracy And Repeatability

Patented Spring-Loaded Scale Locking Collar

Comfort grip reduces fatigue and increases productivity

## Dual Scales

Front- in.-lbs. Back- Newton Meters



Fine Adjustment

Major Adjustment

# Utica® "Click" Type Torque Sensing Wrenches

Ratchet Head, Flex Head Ratchet, Plain Head & Preset



- Drive Sizes: 1/4" through 3/4"
- Audible "click" and/or a few degrees of travel provide simple, fast indication of micrometer – accurate torque settings.
- Patented, low friction torque control mechanism produces accurate readings in either direction.
- Accuracy is  $\pm 4\%$  of setting right hand (clockwise) and  $\pm 6\%$  of setting left hand (counterclockwise) within upper 80% of scale.
- Two calibration adjustments (major and fine) permit easy and precise torque settings. Most conventional torque wrenches have only one adjustment.
- Dual scale models give readings in in.-lbs./Newton Meters or ft.-lbs./Newton Meters.
- Patented spring-loaded locking collar locks scale on desired reading and remains in locked position. Wrench cannot be left inadvertently unlocked.
- Heavy-duty, reversible ratchet models have quick-shift lever to allow easy single-hand shifting.
- Slim, lightweight design reduces fatigue and facilitates use in confined work areas.
- Store all adjustable models at their lowest torque setting.



CH-1800

TCM-75R

TCI-150RA





# Utica® "Click" Type Torque Sensing Wrenches

Ratchet Head, Flex Head Ratchet, Plain Head & Preset

FH-150FRN



## Ratchet Head (in.-lb. Graduations)

Drive Size (in.)	Model No.	Range		Graduations		Length		Weight	
		in.-lb.	Nm	in.-lb.	Nm	in.	mm	lb.	kg
1/4	TCI-150RA*	30-150	2.8-17.5	1.0	.113	9.5	241.3	0.9	0.4
3/8	TCI-150RA-3/8*	30-150	2.8-17.5	1.0	.113	9.5	241.3	0.9	0.4
3/8	TCI-750R	150-750	-	5.0	-	14.25	362.0	3.4	1.5
3/8	TCI-250R*	50-250	5.0-28	1.0	.113	12.5	317.5	3.0	1.4
1/2	TCI-750R-1/2	150-750	-	5.0	-	14.5	368.3	2.5	1.1
1/2	TCI-1600R	700-1600	-	10.0	-	18.5	469.9	2.5	1.1
3/4	TCI-7250R*†	1500-7250	183-805	25.0	2.8	44	1117.6	13.5	6.1

## Ratchet Head (ft.-lb. Graduations)

Drive Size (in.)	Model No.	Range		Graduations		Length		Weight	
		ft.-lb.	Nm	ft.-lb.	Nm	in.	mm	lb.	kg
3/8	TCI-75FRN*	15-75	24-105	.5	1.4	14.25	362.0	2.9	1.3
1/2	TCI-150FRN*▼	30-150	47-210	1.0	1.4	18.5	469.9	1.4	0.6
1/2	TCI-150FRD*	30-150	47-210	1.0	1.4	18.5	469.9	2.8	1.3
1/2	TCI-250FRN*	50-250	75-346	1.0	1.4	21.5	546.1	3.5	1.6
3/4	TCI-600FRN*†	120-600	176-827	2.0	2.7	44	1117.6	13.5	6.1

\*Dual Scale Models: Either in.-lb./Nm graduations, or ft.-lb./Nm graduations. ▼ Heavy duty ratchet head model. † Calibrated right hand only.

## Ratchet Head (Nm Graduations)

Drive Size (in.)	Model No.	Range		Graduation		Length		Weight	
		ft.-lb.	Nm	ft.-lb.	Nm	in.	mm	lb.	kg
3/8	TCM-75R	-	15-75	-	.5	14.75	375	2.2	1.0
1/2	TCM-75R-1/2	-	15-75	-	.5	14.75	375	2.2	1.0
1/2	TCM-150R	-	30-150	-	1.0	18.25	464	2.6	1.2

## Flex Head Ratchet (ft.-lb. Graduations)

Drive Size (in.)	Model No.	Range		Graduations		Length		Weight	
		ft.-lb.	Nm	ft.-lb.	Nm	in.	mm	lb.	kg
1/2	FH-150FRN*	30-150	47-210	1	1.4	19.875	504.8	3.5	1.6

\*Dual Scale Model: ft.-lb./Nm graduations.

Flex Head Pivot Allows 15° Up or down movement in head.

## Plain Head (in.-lb. Graduations)

Drive Size (in.)	Model No.	Range		Graduations		Length		Weight	
		in.-lb.	Nm	in.-lb.	Nm	in.	mm	lb.	kg
1/4	TCI-150*	30-150	2.8-17.5	1	.113	9	228.6	0.8	0.4
3/8	TCI-150-3/8*	30-150	2.8-17.5	1	.113	9	228.6	1.2	0.5
3/8	TCI-750	150-750	-	5	-	13.5	342.9	1.5	0.7
1/2	TCI-1600	700-1600	-	10	-	17	431.8	2.5	1.1

\*Dual Scale Model: in.-lb./Nm graduations.

## Plain Head (ft.-lb. Graduations)

Drive Size (in.)	Model No.	Range		Graduations		Length		Weight	
		ft.-lb.	Nm	ft.-lb.	Nm	in.	mm	lb.	kg
3/8	TCI-75FN*	15-75	24-105	.5	1.4	13.5	342.9	2.1	1.0
1/2	TCI-150FN*	30-150	47-210	1.0	1.4	17	431.8	2.7	1.2

\*Dual Scale Model: ft.-lb./Nm graduations.

## Plain Head Preset (Formerly 28538)

Drive Size (in.)	Model No.	Capacity		Length		Weight	
		ft.-lb.	Nm	in.	mm	lb.	kg
3/4	CH-1800	150	204	26.5	673.1	3.2	1.5

Preset to your exact specifications. 150 ft.-lb. (204Nm) capacity.

## Torque Wrench Repair Kits



Part No.	Replacements For:
V702KR	TCI-150RA
V152KR	TCI-150RA3/8, TCI-250R
T702KR	TCI-75FRN, TCI-750R
T153KR	TCI-750R-1/2, TCI-1600R, TCI-150FRD (OLD)*
A253KR	TCI-150FRN, TCI-250FRN, FH-150FRN
T154KR	TCI-150FRD (NEW)*
R702KR	TCI-600FRN, TCI-7250R

\*Old Models have chrome plated shifter caps and new models have black shifter caps

Refer to page 4 for description of Rapid Select.

If calibration certification is required, request at time of purchase.

Note: Unless otherwise specified, all Utica® micrometer adjustable torque sensing wrenches are calibrated for use in both left and right hand directions.

# Utica® “Click” Type Torque Sensing Wrenches

## Interchangeable Head “A” Size Series



- Drive Sizes: 1/4" through 3/4"
- Accept variety of heads to suit specific application requirements.
- Common center principal allows simple exchange or replacement of heads without need for recalibration.
- Choice of micrometer adjustable or single setting (preset) models.
- Accuracy is  $\pm 4\%$  of setting right hand and  $\pm 6\%$  of setting left hand within upper 80% of scale.

### Micrometer Adjustable Wrench – “A” Size

Model No.	Range		Graduations		Length		Weight	
	in.-lb.	Nm	in.-lb.	Nm	in.	mm	lb.	kg
CH-150	30-150	3.4-17	1.0	.113	9	228.6	1.0	0.5

If calibration certification is required, request at time of purchase.

### Single Setting (Preset) Wrench – “A” Size\*

Model No.	Range				Length		Weight	
	Nm	in.-lb.	ft.-lb.	cm-kg	in.	mm	lb.	kg
CHA-11	1.1-11	10-100	.8-8	11-115	5.75	146.1	0.3	0.1
CHA-23	2.3-23	20-200	1.7-17	23-230	7.75	196.9	0.4	0.2

\*See page 1 for description of model change.

If calibration certification is required, request at time of purchase.

**NOTE:** Single setting wrenches do not have a scale and must be set on torque tester.

*When ordering these preset tools, specify desired torque setting.*



Head changes are quick and easy without the need for recalibration.

The 28522 head adapter allows you to weld on custom heads to meet specific applications.



CH-150

CHA-23





# Utica® "Click" Type Torque Sensing Wrenches

"A" Size Interchangeable Heads



Open End U.S. Standard "A"

Opening Size	Part No.	Maximum Torque Load		
		in.-lb.	ft.-lb.	Nm
1/8	OP 42	20	1.7	2.3
5/32	OP 52	35	2.9	4.0
3/16	OP 62	45	3.8	5.1
7/32	OP 72	50	4.2	5.6
1/4	OP 82	67	5.6	7.6
5/16	OP 102	138	12	16
11/32	OP 112	193	16	22
3/8	OP 122	275	23	31
7/16	OP 142	410	34	46
1/2	OP 162	420	35	48
9/16	OP 182	420	35	48
5/8	OP 202	420	35	48
11/16	OP 222	420	35	48
3/4	OP 242	420	35	48

Open End Metric "A"

Opening Size	Part No.	Maximum Torque Load		
		in.-lb.	ft.-lb.	Nm
6mm	MO 62	62	5.1	7
7mm	MO 72	71	5.9	8
8mm	MO 82	133	11	15
9mm	MO 92	186	16	21
10mm	MO 102	274	23	31
11mm	MO 112	410	34	46
12mm	MO 122	420	35	48
13mm	MO 132	420	35	48
14mm	MO 142	420	35	48
15mm	MO 152	420	35	48



Plain Square Drive "A"

Drive Size (in.)	Part No.
1/4	PS 82
3/8	PS 122



Ratcheting Square Drive "A"

Drive Size (in.)	Part No.
1/4	RS 82
3/8	RS 122



12 Point Box U.S. Standard "A"

Opening Size	Part No.	Maximum Torque Load		
		in.-lb.	ft.-lb.	Nm
7/32	LB 72	50	4.0	5.6
1/4	LB 82	67	5.6	7.6
5/16	LB 102	138	12	7.6
3/8	LB 122	275	23	31
7/16	LB 142	410	34	46
1/2	LB 162	420	35	48
9/16	LB 182	420	35	48
5/8	LB 202	420	35	48
11/16	LB 222	420	35	48
3/4	LB 242	420	35	48

12 Point Box Metric "A"

Opening Size	Part No.	Maximum Torque Load		
		in.-lb.	ft.-lb.	Nm
6mm	MB 62	62	5.2	7
7mm	MB 72	71	5.9	8
8mm	MB 82	133	11	15
9mm	MB 92	186	15	21
10mm	MB 102	274	23	31
11mm	MB 112	410	34	46
12mm	MB 122	420	35	48
13mm	MB 132	420	35	48
14mm	MB 142	420	35	48
15mm	MB 152	420	35	48



SAE Size Sockets

Part No.	Square Dr. (in.)	Hex Opening (in.)
1108	1/4	1/4
1110	1/4	5/16
1112	1/4	3/8
1114	1/4	7/16
3108	3/8	1/4
3110	3/8	5/16
3112	3/8	3/8
3114	3/8	7/16
3116	3/8	1/2
3118	3/8	9/16
3120	3/8	5/8

Metric Size Sockets

Part No.	Square Dr. (in.)	Hex Opening (mm)
6mm11	1/4	6mm
7mm11	1/4	7mm
8mm11	1/4	8mm
10mm11	1/4	10mm
10mm13	3/8	10mm
11mm13	3/8	11mm
12mm13	3/8	12mm
13mm13	3/8	13mm
14mm13	3/8	14mm
15mm13	3/8	15mm
16mm13	3/8	16mm



12 Point Flare Nut U.S. Standard "A"

Opening Size	Part No.	Maximum Torque Load		
		in.-lb.	ft.-lb.	Nm
3/8	LF 122	130	11	15
7/16	LF 142	140	12	16
1/2	LF 162	200	17	23
9/16	LF 182	275	23	31
5/8	LF 202	325	27	37
11/16	LF 222	396	33	45
3/4	LF 242	420	35	48



Hex Keys U.S. Standard "A"

Hex Key Size	Part No.	Maximum Torque Load		
		in.-lb.	ft.-lb.	Nm
1/16	HX 42	8	0.6	0.9
5/64	HX 52	16	1.3	1.8
3/32	HX 62	28	2.3	3.2
7/64	HX 72	44	3.6	5
1/8	HX 82	65	5.4	7.3
9/64	HX 92	95	7.9	11
5/32	HX 102	128	11	14
3/16	HX 122	222	18	25
7/32	HX 142	350	29	40
1/4	HX 162	420	35	48



Bit Holders

Part No.	Square Drive (in.)	Female Hex (in.)
825	1/4	1/4
M-825	1/4	1/4 Magnetic
838	3/8	1/4
M-838	3/8	1/4 Magnetic



Adapters

Part No.	Female Square Drive (in.)	Male Square Drive (in.)
EX-372	1/4	3/8
EX-254	3/8	1/4
EX-503	3/8	1/2

Head Adapter "A"

Weld custom heads to adapters to couple with "A" handles.



Refer to page 4 for description of Rapid Select.

**NOTES:** 1. "A" series drive heads are not interchangeable with "B" series heads.  
2. Utica torque heads when used with Utica torque wrenches, meet the accuracy statements for Utica wrenches. We cannot guarantee accuracy when other manufacturers heads or wrenches are interchanged with a Utica part.

# Utica® “Click” Type Torque Sensing Wrenches

## Interchangeable Head “B” Size Series



- Designed for higher torque applications than “A” size series.
- Accept a variety of head configurations to suit many fastener requirements.
- Common center principal allows simple exchange or replacement of heads without need for recalibration.
- Choice of micrometer adjustable or single setting (preset) models with same “click” action and features as “A” series wrenches.
- Accuracy is  $\pm 4\%$  of setting right hand and  $\pm 6\%$  of setting left hand within upper 80% of scale.

### Micrometer Adjustable Wrench – “B” Size

Model No.	Range		Graduations		Length		Weight	
	ft.-lb.	Nm	ft.-lb.	Nm	in.	mm	lb.	kg
CH-75F	15-75	23.7-105.1	0.5	0.7	14	355.6	2.0	0.9
CH-150F	30-150	47.4-210.1	1.0	1.4	17.125	435.0	2.5	1.1

### Single Setting (Preset) Wrench – “B” Size\*

Model No.	Range				Length		Weight	
	Nm	in.-lb.	ft.-lb.	m-kg	in.	mm	lb.	kg
CHB-55	5-55	50-500	4-40	.5-5.5	8.25	209.6	1.0	0.4
CHB-85	8-85	75-750	6-60	1.0-8	10.5	266.7	1.3	0.6
CHB-110	11-110	100-1000	8-80	1.0-11	12.5	317.5	1.5	0.7
CHB-170	17-170	150-1500	12-125	2.0-17	14.25	362.0	1.7	0.8
CHB-225	22-225	200-2000	16-166	3.0-23	16.25	412.8	1.9	0.9

\*See page 1 for description of model change.

If calibration certification is required, request at time of purchase.

**NOTE:** Single setting wrenches do not have a scale and must be set on torque tester.

*When ordering these preset tools, specify desired torque setting.*



# Utica® "Click" Type Torque Sensing Wrenches

## "B" Size Interchangeable Heads



**LF 244**  
12 Point Flare Nut  
U.S. Standard

"B"

Opening Size	Part No.	Maximum Torque Load		
		in.-lb.	ft.-lb.	Nm
1/2	LF 164	200	17	23
9/16	LF 184	275	23	31
5/8	LF 204	325	27	37
11/16	LF 224	396	33	45
3/4	LF 244	500	42	56
7/8	LF 284	800	67	90
1	LF 324	1000	83	113
1 1/8	LF 364	1000	83	113



**MO 224**  
Open End U.S. Standard "B"

Opening Size	Part No.	Maximum Torque Load		
		in.-lb.	ft.-lb.	Nm
1/2	OP 164	550	46	62
9/16	OP 184	770	64	87
5/8	OP 204	1100	92	124
11/16	OP 224	1375	115	155
3/4	OP 244	1650	138	186
13/16	OP 264	2100	175	237
7/8	OP 284	2100	175	237
15/16	OP 304	2100	175	237
1	OP 324	2100	175	237
1 1/16	OP 344	2100	175	237
1 1/8	OP 364	2100	175	237
1 3/16	OP 384	2100	175	237
1 1/4	OP 404	2100	175	237



**MB 224**  
12 Point Box U.S. Standard "B"

Opening Size	Part No.	Maximum Torque Load		
		in.-lb.	ft.-lb.	Nm
1/2	LB 164	550	46	62
9/16	LB 184	770	64	87
5/8	LB 204	1100	92	124
11/16	LB 224	1375	115	155
3/4	LB 244	1650	138	186
13/16	LB 264	2100	175	237
7/8	LB 284	2100	175	237
15/16	LB 304	2100	175	237
1	LB 324	2100	175	237
1 1/16	LB 344	2100	175	237
1 1/8	LB 364	2100	175	237

**Head Adapter "B"** 28523

Weld custom heads to adapters to couple with "B" handles.



**RS 124**  
Ratcheting Square Drive "B"

Drive Size (in.)	Part No.
3/8	RS 124
1/2	RS 164



**SAE Size Sockets**

Part No.	Square Dr. (in.)	Hex Opening (in.)
3108	3/8	1/4
3110	3/8	5/16
3112	3/8	3/8
3114	3/8	7/16
3116	3/8	1/2
3118	3/8	9/16
3120	3/8	5/8
5110	1/2	5/16
5112	1/2	3/8
5114	1/2	7/16
5116	1/2	1/2
5118	1/2	9/16
5120	1/2	5/8
5122	1/2	11/16
5124	1/2	3/4
7120	3/4	5/8
7124	3/4	3/4
7128	3/4	7/8
7130	3/4	15/16
7132	3/4	1

**Open End Metric "B"**

Opening Size	Part No.	Maximum Torque Load		
		in.-lb.	ft.-lb.	Nm
12mm	MO 124	434	36	49
13mm	MO 134	549	46	62
14mm	MO 144	761	63	86
15mm	MO 154	920	77	104
16mm	MO 164	1097	92	124
17mm	MO 174	1230	103	139
18mm	MO 184	1372	114	155
19mm	MO 194	1646	137	186
20mm	MO 204	1921	160	217
22mm	MO 224	2100	175	237

**12 Point Box Metric "B"**

Opening Size	Part No.	Maximum Torque Load		
		in.-lb.	ft.-lb.	Nm
12mm	MB 124	434	36	49
13mm	MB 134	549	46	62
14mm	MB 144	761	63	86
15mm	MB 154	920	77	104
16mm	MB 164	1097	92	124
17mm	MB 174	1230	103	139
18mm	MB 184	1372	114	155
19mm	MB 194	1646	137	186
20mm	MB 204	1921	160	217
22mm	MB 224	2100	175	237

**Metric Size Sockets**

Part No.	Square Dr. (in.)	Hex Opening (mm)
10mm13	3/8	10mm
11mm13	3/8	11mm
12mm13	3/8	12mm
13mm13	3/8	13mm
14mm13	3/8	14mm
15mm13	3/8	15mm
16mm13	3/8	16mm
13mm15	1/2	13mm
14mm15	1/2	14mm
15mm15	1/2	15mm
16mm15	1/2	16mm
17mm15	1/2	17mm
18mm15	1/2	18mm
19mm15	1/2	19mm
21mm15	1/2	21mm
19mm17	3/4	19mm
21mm17	3/4	21mm
22mm17	3/4	22mm
24mm17	3/4	24mm
30mm17	3/4	30mm

**Bit Holders**

Part No.	Square Drive (in.)	Female Hex (in.)	
	825	1/4	1/4
M-825	1/4	1/4	Magnetic
838	3/8	1/4	
M-838	3/8	1/4	Magnetic
858	1/2	1/4	
M-858	1/2	1/4	Magnetic

**Adapters**

Part No.	Female Square Drive (in.)	Male Square Drive (in.)
	EX-254	3/8
EX-503	3/8	1/2
EX-375	1/2	3/8
EX-623	1/2	5/8
EX-751	1/2	3/4

Refer to page 4 for description of Rapid Select.

**NOTES:** 1. "A" series drive heads are not interchangeable with "B" series heads.  
2. Utica torque heads when used with Utica torque wrenches, meet the accuracy statements for Utica wrenches. We cannot guarantee accuracy when other manufacturers heads or wrenches are interchanged with a Utica part.

# Utica® Dial Indicating Torque Wrenches



Utica series dial torque wrenches are ideal for engineering departments, quality control, inspection and laboratory applications which require exact torque readings during tightening. Utica beam wrenches feature a patented counterbalanced indicator mechanism. This maintains torque accuracy by preventing the pointer from "dropping off" when the wrench is shifted from a horizontal to a vertical position.

The dial design of the Utica dial wrench is unique for several reasons. First, a parallax mirror provides correct dial readouts from any position. When reading the dial at an angle, the true torque reading is halfway between the pointer and the pointer reflections. Second, the one-piece crystal and bezel is injection molded to increase strength and reliability compared to typical multi-piece crystal designs. Third, the dial design also incorporates sturdy integral indicator guards to reduce the potential for crystal breakage.

- Allow determination of applied right or left hand torque with accuracy of  $\pm 4\%$  in either direction. Accuracy of  $\pm 2\%$  available on special order.
- Slim drive end allows use in tight work areas.
- Memory indicator locks on previous reading.

## Nm/in.-lb. Scale\*\*

Model No.	Drive Size (in.)	Range		Graduations		Weight	
		Nm	in.-lb	Nm	in.-lb	lb.	kg
DA-3	1/4	0-3.2	0-30	0.1	1.0	1.8	0.8
DA-8	1/4	0-8.2	0-75	0.2	2.5	1.8	0.8
DA-16	3/8	0-16.5	0-150	0.5	2.5	1.9	0.9
DA-35	3/8	0-35.0	0-300	0.5	5.0	1.9	0.9
DA-70	3/8	0-70.0	0-600	1.0	10.0	2.0	0.9

\*\*See page 1 for description of model change.

## Nm/ft.-lb. Scale\*\*

Model No.	Drive Size (in.)	Range		Graduations		Weight	
		Nm	ft.-lb	Nm	ft.-lb	lb.	kg
DA-70F	3/8	0-70	0-50	1.0	1.0	2.0	0.9
DA-140F	1/2	0-140	0-100	2.0	2.0	3.3	1.5
DA-240F	1/2	0-240	0-175	5.0	5.0	6.7	3.0
DA-320F*x	1/2	0-320	0-250	10.0	5.0	5.5	2.5
DA-480F*x	3/4	0-480	0-350	10.0	10	12.4	5.6
DA-820F*z	3/4	0-820	0-600	20.0	10	11.0	5.0

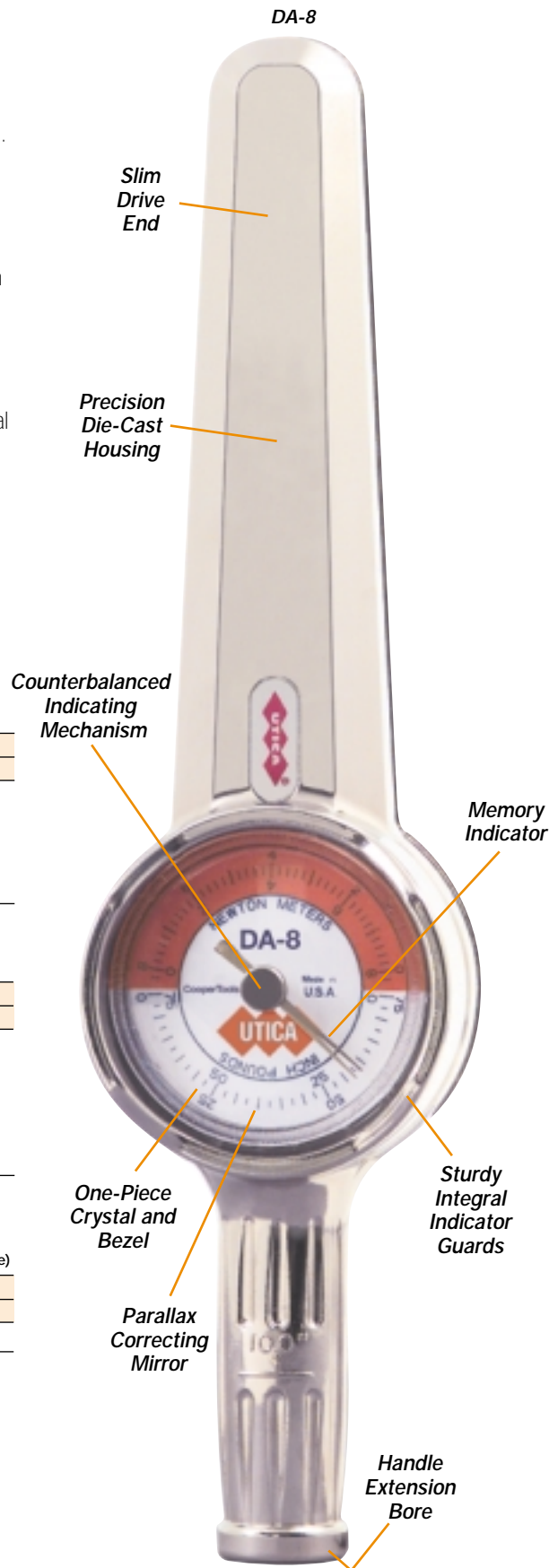
\*x includes extension bar    \*z includes extension bar and helper bar  
 \*\*See page 1 for description of model change.

## Dial Wrench With Protective Cage (protects crystal and dial from damage)

Model No.	Drive Size (in.)	Range ft.-lb	Graduations ft.-lb	Weight	
				lb.	kg
DA4350FMPC*x	3/4	0-350	10	7.0	3.2

\*x includes extension bar.

Calibration certification may be provided with each tool for a nominal charge.





# Utica® Beam Type Torque Wrenches



Utica beam wrenches are recommended for quality control testing including non-destructive and destructive applications. A contoured plastic grip reduces operator fatigue and has a unique hand guard, which prevents the operator's hand from slipping into the indicator plate. The satin finish on the scale plate reduces glare for easy reading, regardless of direction of pull.

Utica beam wrenches feature exceptional accuracy retention, which means calibration intervals can be extended. The deflecting element is made of alloy steel, while the head is heat treated, polished and nickel-plated for corrosion resistance. Plus, the beam has no holds or welds, which can reduce wrench life. All of these featured combined translate into lower total wrench cost.

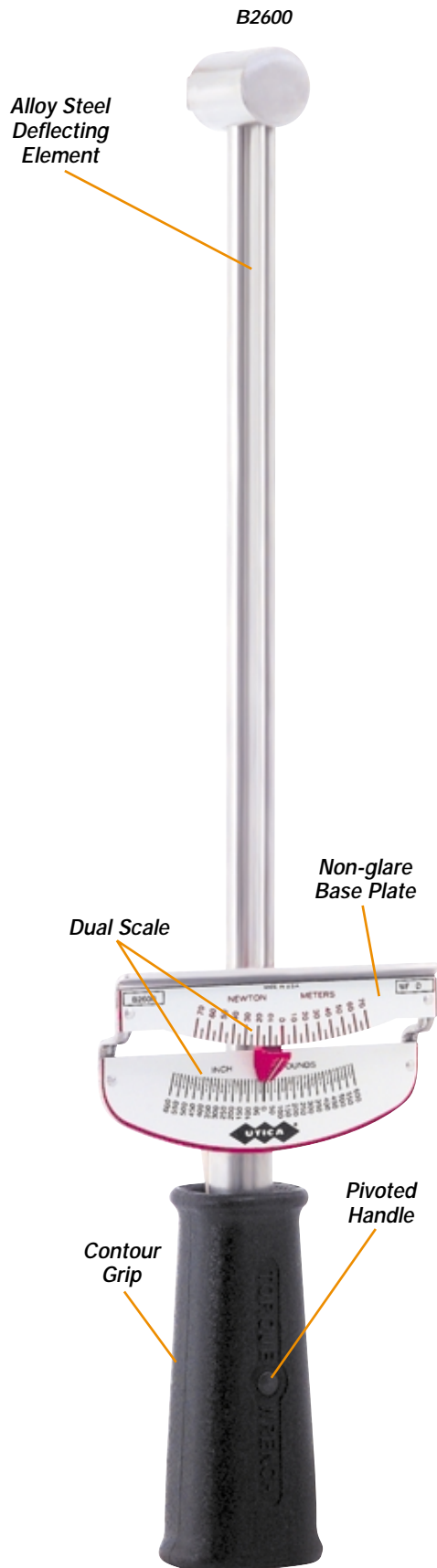
Utica beam wrenches feature exceptional accuracy retention, which means calibration intervals can be extended. The deflecting element is made of alloy steel, while the head is heat treated, polished and nickel-plated for corrosion resistance. Plus, the beam has no holds or welds, which can reduce wrench life. All of these featured combined translate into lower total wrench cost.

- The most economical and reliable torque tool for general use.
- Measures torque in both right and left hand directions.
- Accuracy is  $\pm 4\%$  of indicated reading.

## in.-lb./Nm Scale

Model No.	Drive Size (in.)	Range		Graduations		Weight	
		in.-lb	Nm	in.-lb	Nm	lb.	kg
B2600	3/8	0-600	0-70	25	5	1.3	0.6

Calibration certification may be provided with each tool for a nominal charge.



Refer to page 4 for description of Rapid Select.



# Utica® TA4 Torque Analyzer



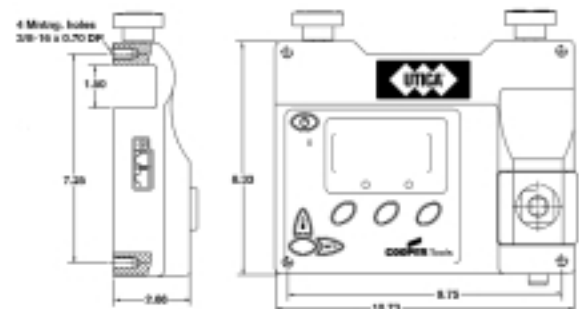
The Utica TA4 is a great asset to any quality assurance program where torque analysis is

required. The TA4 provides torque verification for a wide range of hand and power tools. This includes dial, beam and click type torque wrenches, most screwdrivers, and even pulse tools. This versatile analyzer offers the operator a variety of ways to easily verify torque applied with a selection of seven engineering units: Oz In, Lb In, Lb Ft, Nm, cNm, KgfcM, Kgfm. Plus, three modes of operation are available – track, peak, and first peak.

Data output can be viewed via the LCD display, or downloaded to a computer at high speed. Data is compatible with Windows 95, NT, and Windows 98 for easy downloading. Each TA4 includes an RS-232 cable to complete the connection between torque analyzer and computer. Plus, instructions are included on how to implement downloads.



- Internal accuracy +/-0.5% from 20% to 100% of range; +/-1.0% from 10% to 19% of range.
- Clockwise and counterclockwise operation.
- Selectable filtering speeds: 500Hz, 1000Hz, 1800Hz, and 3000Hz – for accurate torque readings on pulse tools made by a variety of manufacturers.
- NIMH rechargeable batteries provide 8-10 hours of continuous use.
- Can be mounted vertically or horizontally for added flexibility.
- Manual and auto reset functions to clear displayed values.
- Built-in sleep mode to save power when not in use.
- Includes an audio and visual alarm when high or low torque limit is reached.
- Certificate of calibration supplied with each unit traceable to the National Institute of Standards and Technology (NIST).
- 110 volt and 220 volt models available.



110V Model	220V Model	Torque Range		Square Drive	
		English	Metric	In.	mm
TA4-05B-1	TA4-05B-2	5-50 in.-lb.	.56-5.64 Nm	1/4	6.35
TA4-10B-1	TA4-10B-2	10-100 in.-lb.	1.13-11.29 Nm	1/4	6.35
TA4-05F-1	TA4-05F-2	5-50 ft.-lb.	6.78-67.79 Nm	3/8	9.53
TA4-25F-1	TA4-25F-2	25-250 ft.-lb.	33.90-338.95 Nm	1/2	12.7

### Run Down Adapters\*

Part No.	English	Metric	Sq. Drive
01-9232	5-50 in.-lb	56-564 cNm	1/4"
01-9233	10-100 in.-lb	112-1129 cNm	1/4"
01-9240	5-50 ft.-lb.	6-67 Nm	3/8"
01-9242	25-250 ft.-lb.	33-338 Nm	1/2"

*Square drives conform to ASME B107 standards for proper fit with transducer.*

### Power Supplies\*

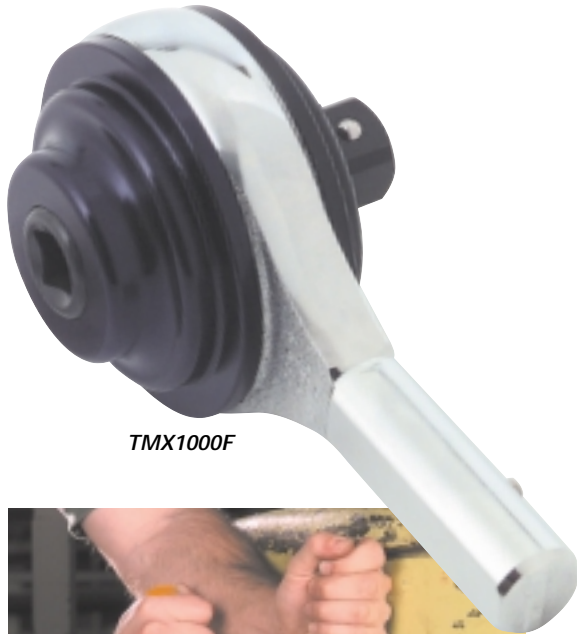
Part No.	Description
01-9201	110V power supply for all TA4 systems
01-9202	220V power supply for all TA4 systems

### Cable\*

Part No.	Description
01-9205	RS-232 Cable



\*Each TA4 unit comes complete with the appropriate rundown fixture, power supply, RS-232 cable and case.



TMX1000F

- Multiply force to turn fasteners easily when working space is limited and unusually high torque is required.
- Power ratios of 4 to 14 times are available.
- Rugged, precision-manufactured gear wrenches designed for accurate torquing of large fasteners and for generating high power output for loosening "frozen" nuts and bolts.
- Manual torque input from ratchet or torque wrench is multiplied through planetary gearing and applied to the fastener.
- Minimum effort allows one man operation.

### Anti-backlash Device

The device is built into the TMX2000FR models to solve "wind-up" problems encountered when multipliers are used in confined areas. Applied turning force is stored so that only a short arc is necessary to complete the torquing process quickly and securely. Can be coupled with larger torque multipliers where space is limited.

**NOTE:** Input and output rotation is in the same direction.

Therefore, rotation of the reaction bar is in the opposite direction. It is necessary that the reaction bar rest securely against a stationary object strong enough to withstand the force being generated. Power loss due to friction in the gear train is approximately 15%.



Model No.	Output ft.-lb.	Cap. Nm	Female Input Dr. (in.)	Male Output Dr. (in.)	Gear Ratio	Weight*		Length*	
						lb.	kg	in.	mm
TMX1000F	1000	1350	1/2	3/4	4 to 1	7.0	3.2	22	559
TMX2000F	2000	2700	3/4	1	4 to 1	14.0	6.4	25	635
TMX2000FR**	2000	2700	3/4	1	4 to 1	15.0	6.8	25	635
TMX3000F	3000	4000	3/4	1 1/2	14.3 to 1	30.0	13.6	30	762
TMX4000F	4000	5400	1	1 1/2	4.33 to 1	30.0	13.6	30	762
TMX8000F†	8000	10800	1	1 1/2	4.6 to 1	47.0	21.3	32	813
TMX12000F†	12000	16000	1	2 1/2	6 to 1	73.0	33.1	30	762

\*Includes reaction bar. \*\*Anti-backlash model. †Available on special order.

TMX12000F





## Quality Fastener Tools

For more than half a century Apex has maintained the position of world leader in industrial fastening tools. Many power and insert bits, socket combinations and other drivers/adapters pioneered by Apex have today become industry standards, while Apex quality, service and selection give you unsurpassed value.

### More Quality For Your Money

Apex quality starts with the selection of raw materials. Only carefully chosen, high grade tool steel is used to make Apex industrial fastener tools. Next, each tool is precision machined from solid bar stock to exacting standards of accuracy. You always get a snug, secure fit – a fit not possible from stamped tools.

Finally, each Apex fastener tool is tempered with our exclusive heat treating process.

During this step the degree of hardness is determined based upon the application.

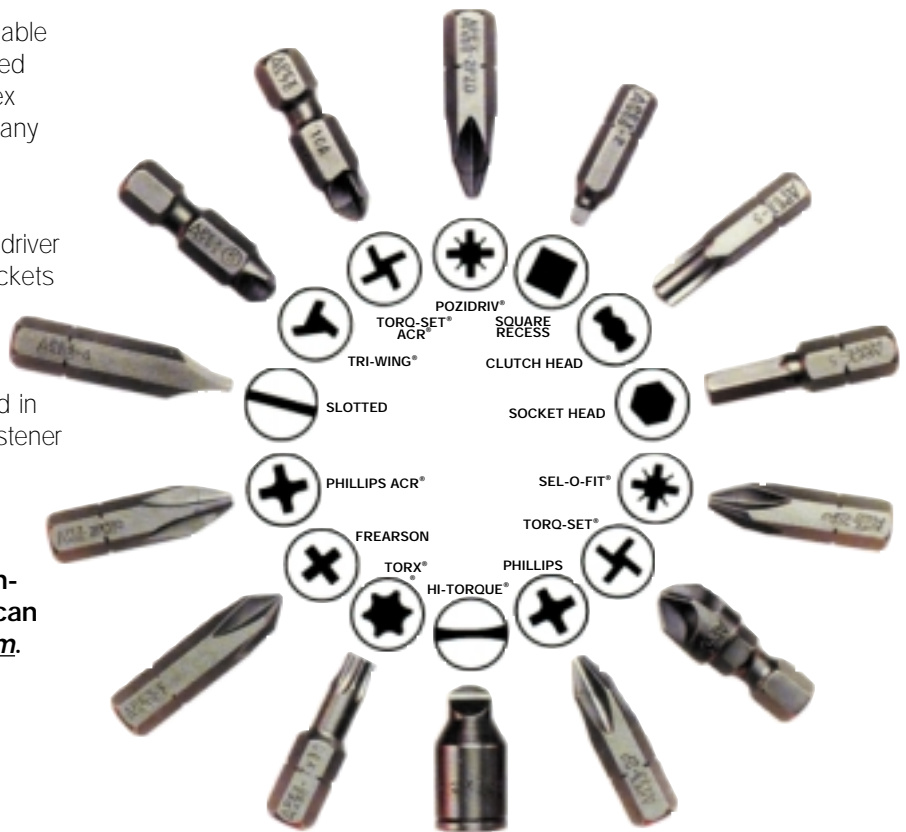
### Fast Delivery

All Apex Rapid Select catalog items are available off-the-shelf for immediate delivery. If you need special assistance with your order, your Apex manufacturer's representative can help with any questions that you may have.

### Special Orders

Apex offers the broadest selection of screw driver and nut runner tools available, from bits, sockets and universal wrenches to extensions, adapters and nut setters. If you have a special application, contact your Apex representative. We may have what you need in stock, or can design and produce special fastener tools for almost any application.

For a catalog of the complete line of Apex Quality Fastener Tools, please contact your local Apex Distributor or you can visit our website at [www.apex-tools.com](http://www.apex-tools.com).



Registered Trade Marks: HI-TORQUE, Voi-Shan; TORX, Camcar Division of Textron; ACR, POZIDRIV, TORQ-SET and TRI-WING, Phillips International Co.; SUPADRIV, EIS (Fasteners) LTD.; SEL-O-FIT, FLIP-TIP, and Apex, Cooper Industries, CooperTools Division, Apex Operation.

# Conversion Table

## Torque – Miscellaneous

Torque Conversion – In. Lbs. (Nm)					
In.	Nm	In.	Nm	In.	Nm
5	0.6	50	5.7	140	15.8
10	1.1	60	6.8	150	17.0
15	1.7	70	7.9	160	18.1
20	2.3	80	9.0	170	19.2
25	2.8	90	10.2	180	20.3
30	3.4	100	11.3	190	21.5
35	4.0	110	12.4	200	22.6
40	4.5	120	13.6		
45	5.1	130	14.7		

Torque Conversion – Ft. Lbs. (Nm)					
Ft. Lbs.	Nm	Ft. Lbs.	Nm	Ft. Lbs.	Nm
1	1.36	43	58.3	85	115.3
2	2.7	44	60.0	86	117.0
3	4.1	45	61.0	87	118.0
4	5.4	46	62.4	88	119.3
5	6.8	47	63.7	89	121.0
6	8.1	48	65.1	90	122.0
7	9.5	49	66.4	91	123.4
8	10.9	50	67.8	92	125.0
9	12.2	51	69.2	93	126.1
10	13.6	52	70.5	94	127.5
11	14.9	53	71.9	95	129.0
12	16.3	54	73.2	96	130.2
13	17.6	55	74.6	97	131.5
14	19.0	56	75.9	98	133.0
15	20.3	57	77.3	99	134.2
16	21.7	58	78.7	100	135.6
17	23.1	59	80.0	110	149.2
18	24.4	60	81.4	115	156.0
19	25.8	61	82.7	120	163.0
20	27.1	62	84.1	125	170.0
21	28.5	63	85.4	130	176.3
22	29.8	64	86.8	135	183.1
23	31.2	65	88.1	140	190.0
24	32.5	66	90.0	145	197.0
25	33.9	67	90.9	150	203.4
26	35.3	68	92.2	155	210.2
27	36.6	69	93.6	160	217.0
28	38.0	70	94.9	165	224.0
29	39.3	71	96.3	170	231.0
30	40.7	72	97.6	175	237.3
31	42.0	73	99.0	180	244.1
32	43.4	74	100.3	185	251.0
33	44.8	75	102.0	190	258.0
34	46.1	76	103.1	195	264.4
35	47.5	77	104.4	200	271.2
36	48.8	78	105.8	225	305.1
37	50.2	79	107.1	250	339.0
38	52.0	80	108.5	275	373.0
39	52.9	81	110.0	300	407.0
40	54.2	82	111.2	350	475.0
41	55.6	83	112.6	400	542.4
42	57.0	84	114.0		

Torque Conversion Factors		
To Convert	Into	Multiply By
Inch Pounds	Foot Pounds	0.0833
Inch Pounds	Newton meters	0.1130
Inch Pounds	Kg-meters	0.0115
Inch Pounds	Kg-Cm	1.1521
Foot Pounds	Inch Pounds	12.000
Foot Pounds	Newton meters	1.3558
Foot Pounds	Kg-meters	0.1382
Foot Pounds	Kg-Cm	13.8240
Newton Meters	Inch Pounds	8.8507
Newton Meters	Foot Pounds	0.7375
Newton Meters	Kg-meters	0.1020
Newton Meters	Kg-Cm	10.2000
Kg meters	Inch Pounds	86.8100
Kg meters	Foot Pounds	7.2340
Kg meters	Newton-meters	9.8040
Kg Cm	Inch Pounds	0.8681
Kg Cm	Foot Pounds	0.0723
Kg Cm	Newton-meters	0.0980

Miscellaneous Conversion Factors		
To Convert	Into	Multiply By
Inches	Millimeters	25.4000
Millimeters	Inches	0.0394
Pounds	Kilograms	0.4536
Kilograms	Pounds	2.2050
psi	bar	0.069
bar	psi	14.5



## CooperTools Is On The Web!

CooperTools is pleased to unveil a complete resource for power tools on-line. [www.coopertools.com](http://www.coopertools.com) offers product information, service literature, brand catalogs, press releases and more. A dominant source of information, the CooperTools' web site is your source for application solutions on-line.



## Making your job easier is our goal!

You can access service literature anytime. Choose a category such as Assembly Tools or Material Removal Tools from the main menu and then click on the brand you're looking for. You'll be on your way to any current service literature you need, whether it's Apex, Cleco, Utica or any of our power tools' brands.

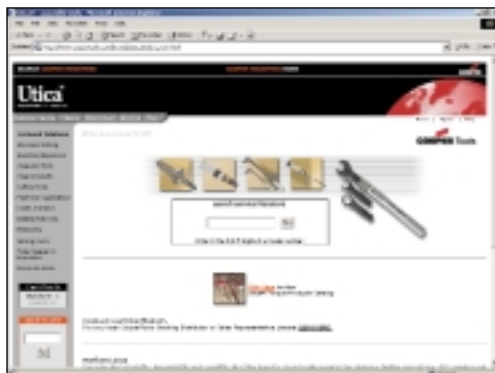
Up-to-date product catalogs are also available online providing you with current information on our broad product line. Even Material Safety Data Sheets (M.S.D.S.) for Safety and Disposal Information are available on our website.



## It's simple!

Our *Customer Service* section provides you with information such as answers to frequently asked questions or contact phone numbers and addresses for your area of the country. You can learn more about CooperTools in the *About Us* section or browse through the *What's New* information to learn how CooperTools continues to be your source for solutions.

For even faster searches, you can go direct to a brand site by simply entering the brand name. Entering [www.uticatools.com](http://www.uticatools.com) takes you directly to the Utica site.



What is the future of [www.coopertools.com](http://www.coopertools.com)? A dynamic site continuing to focus on your need for up-to-date information on the latest CooperTools' offerings that you can access anytime you need...twenty-four hours a day, seven days a week!



# TRAINING

## *Our Commitment To Your Success*

Our complete line of tools are carefully designed and built from the finest materials available in order to provide years of trouble free service. But, as with any piece of equipment, service problems can occur. All tools are designed to be easy to service...that is, of course, if you know what you're doing.

To facilitate quick repairs, and limit downtime...CooperTools conducts training seminars covering all aspects of every tool we make.

Introductory training seminars are designed to fully acquaint students with the entire line of tools and their fundamental operation. The emphasis is on thoroughly understanding each tool...its features, uses, and the best way to demonstrate the tool to a potential buyer.

Advanced training seminars, which are often tailored to individual needs, are designed to hone the skills of the experienced student. Hands-on experience, with an emphasis on troubleshooting and repairing, are the focus of this training.

For additional information on our training seminars, please call your local CooperTools Distributor.









AIRETOOL®

APEX® • BUCKEYE®

CAMPBELL® • CLECO®

COOPER AUTOMATION™ • CRESCENT®

DGD® • DOLER® • DOTCO® • EREM®

GARDNER-DENVER® • GARDOTRANS™

GETA™ • KAHNETICS® • LUFKIN®

MASTER POWER® • METRONIX™

NICHOLSON® • PLUMB® • H.K. PORTER®

QUACKENBUSH™ • RECOULES™ • ROTOR™

UTICA® • WELLER® • WIRE-WRAP®

WISS® • XCELITE®

**Apex Operation**

P.O. Box 952

Dayton, OH 45401-0952

Tel: 937-222-7871

Fax: 937-228-0422

[www.uticatools.com](http://www.uticatools.com)

AUGUST 2002

SPECIFICATIONS SUBJECT TO CHANGE WITHOUT NOTICE. GARDNER-DENVER IS A REGISTERED TRADEMARK OF GARDNER-DENVER MACHINERY, INC., USED UNDER LICENSE. © 2002 COOPER INDUSTRIES, INC. SP-301 0802 20MB