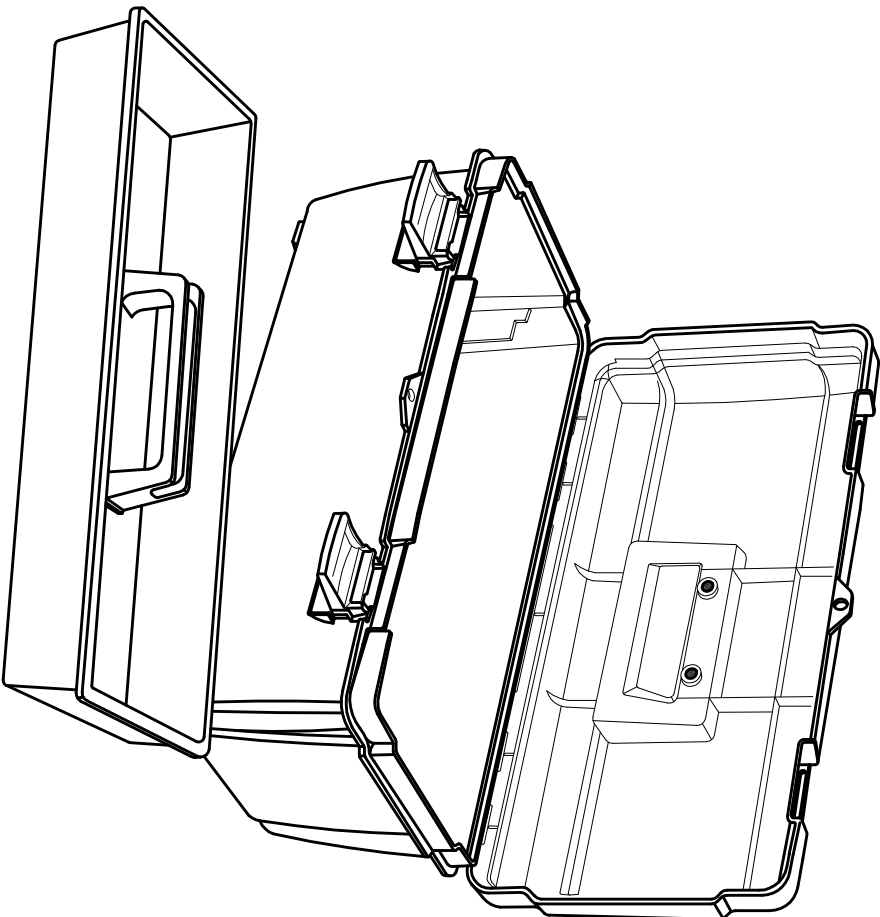
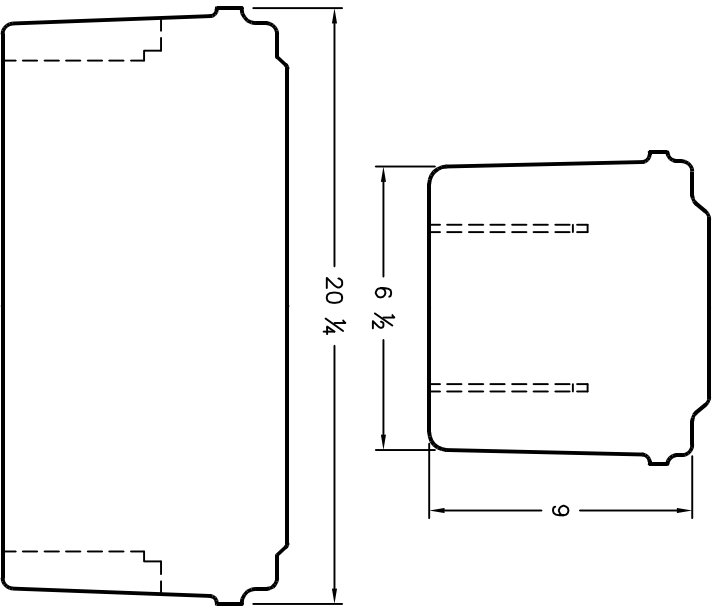


ALL RIGHTS RESERVED. NO PORTION OF THIS PUBLICATION, WHETHER IN WHOLE OR IN PART CAN BE REPRODUCED WITHOUT THE EXPRESS WRITTEN CONSENT OF SPC TECHNOLOGY.

REVISONS		DOC. NO. SPC-F005	* Effective: 12/21/98	* DCP No: 680				
DCP #	REV	DESCRIPTION	DRAWN	DATE	CHECKD	DATE	APPRVD	DATE
	A	RELEASED	CMD				D.D.	4/11/88
1090	B	REDRAWN & UPDATED	HYO	10/11/01	J.C.	10/16/01	J.C.	10/16/01



- SPECIFICATIONS:**
1. Material: lightweight co-polymer polypropylene resin, Gray
  2. Non-conductive
  3. Rustproof and scratch resistant
  4. Brass hinge and latch pins
  5. Tough recessed handle
  6. Resistant to oil and most common chemicals
  7. Positive action latches
  8. Tongue and groove construction

Try Size: 17 5/8 X 6 3/8 X 2 3/16

DISCLAIMER:  
ALL STATEMENTS AND TECHNICAL INFORMATION CONTAINED HEREIN ARE BASED UPON INFORMATION AND/OR TESTS WE BELIEVE TO BE ACCURATE AND RELIABLE SINCE CONDITIONS OF USE ARE BEYOND OUR CONTROL. THE USER SHALL DETERMINE THE SUITABILITY OF THE PRODUCT FOR THE INTENDED USE AND ASSUME ALL RISK AND LIABILITY WHATSOEVER IN CONNECTION THEREWITH.

UNLESS OTHERWISE SPECIFIED, DIMENSIONS ARE FOR REFERENCE PURPOSES ONLY.

DRAWN BY:	CMD	DATE:		DRAWING TITLE:	UTILITY BOX WITH LIFT-OUT TRAY		
CHECKED BY:		DATE:		SIZE	DWG. NO.	ELECTRONIC FILE	
APPROVED BY:		DATE:		A	TCP-300-1	87N2410.DWG	REV
D.D.		4/11/88		SCALE:	NTS	U.O.M.: INCHES	SHEET: 1 OF 1



**SPC TECHNOLOGY**