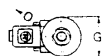
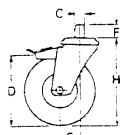


# SERIES 68 INJECTION MOULDED VIRGIN NYLON 6 WHEELS

## Standard Duty Castors - NL

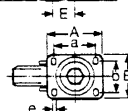
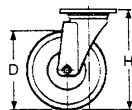
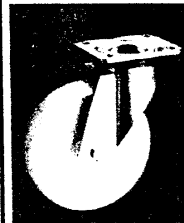
### THREADED STEM SWIVEL CASTOR WITH FOOT BRAKE



Wheel diameter Tread width D b	Overall height H	Stem diameter C	Stem length F	Plate diameter G	Offset E	Pedal length O	Carrying capacity Kg	Plain Bearing Plabe		Roller Bearing Robe	
								Unit weight Kg	Code No. 68	Unit weight Kg	Code No. 68
80 30	107	10x1.5	23	80	36	120	180	0.748	7201	0.773	7401
100 30	128	10x1.5	23	80	40	120	200	0.835	7202	0.865	7402
125 35	157	12x1.75	43	80	46	120	220	1.065	7203	1.095	7403
150 45	188	16x2	35	106	56	156	300	2.000	7204	2.175	7404
175 45	212	16x2	35	106	56	156	300	2.159	7205	2.294	7405
200 50	236	16x2	35	106	56	156	300	2.376	7206	2.506	7406

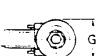
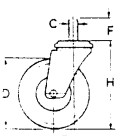
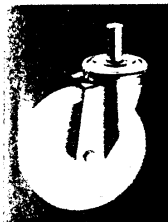
## Medium-Heavy Duty Castors - P

### SWIVEL CASTOR



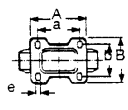
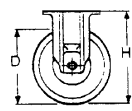
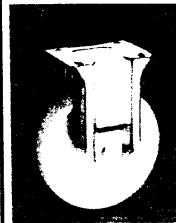
Wheel diameter Tread width D b	Overall height H	Plate dimensions Ax B	Hole spacing axb	Hole width e	Offset m	Carrying capacity Kg	Plain Bearing Plabe		Roller Bearing Robe		Ball Bearing Babe	
							Unit weight Kg	Code No. 68	Unit weight Kg	Code No. 68	Unit weight Kg	Code No. 68
100 30	138	100x85	80x60	9	46	300	0.995	7502	1.025	7602	-	-
125 40	161	100x85	80x60	9	48	350	1.160	7503	1.190	7603	-	-
150 45	200	140x110	105x80	11	70	550	2.690	7504	2.665	7604	-	-
175 45	225	140x110	105x80	11	70	630	2.860	7505	2.995	7605	-	-
200 50	250	140x110	105x80	11	70	730	3.105	7506	3.265	7606	3.340	4966

### SOLID PLUG SWIVEL CASTOR



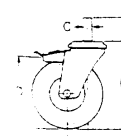
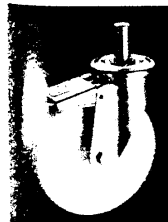
Wheel diameter Tread width D b	Overall height H	Stem diameter C	Stem length F	Plate diameter G	Offset E	Carrying capacity Kg	Plain Bearing Plabe		Roller Bearing Robe	
							Unit weight Kg	Code No. 68	Unit weight Kg	Code No. 68
80 30	107	22	43	80	36	180	0.718	6101	0.743	6301
100 30	128	22	43	80	40	200	0.773	6102	0.803	6302
125 40	157	22	43	80	46	220	1.029	6103	1.059	6303
150 45	188	26	56	106	56	300	1.925	6104	2.100	6304
175 45	212	26	56	106	56	300	2.084	6105	2.219	6305
200 50	236	26	56	106	56	300	2.301	6106	2.431	6306

### FIXED CASTOR



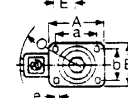
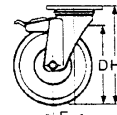
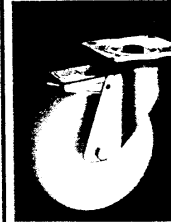
Wheel diameter Tread width D b	Overall height H	Plate dimensions Ax B	Hole spacing axb	Hole width e	Carrying capacity Kg	Plain Bearing Plabe		Roller Bearing Robe		Ball Bearing Babe	
						Unit weight Kg	Code No. 68	Unit weight Kg	Code No. 68	Unit weight Kg	Code No. 68
100 30	138	100x85	80x60	9	300	0.500	8502	0.530	8602	-	-
125 40	161	100x85	80x60	9	350	0.635	8503	0.665	8603	-	-
150 45	200	140x110	105x80	11	550	1.255	8504	1.430	8604	-	-
175 45	225	140x110	105x80	11	630	1.445	8505	1.580	8605	-	-
200 50	250	140x110	105x80	11	730	1.645	8506	1.805	8606	1.880	5366

### SOLID PLUG SWIVEL CASTOR WITH FOOT BRAKE



Wheel diameter Tread width D b	Overall height H	Stem diameter C	Stem length F	Plate diameter G	Offset E	Pedal length O	Carrying capacity Kg	Plain Bearing Plabe		Roller Bearing Robe	
								Unit weight Kg	Code No. 68	Unit weight Kg	Code No. 68
80 30	107	22	43	80	36	120	180	0.893	7101	0.918	7301
100 30	128	22	43	80	40	120	200	0.980	7102	1.010	7302
125 35	157	22	43	80	46	120	220	1.174	7103	1.204	7303
150 45	188	26	56	106	56	156	300	2.210	7104	2.385	7304
175 45	212	26	56	106	56	156	300	2.369	7105	2.504	7305
200 50	236	26	56	106	56	156	300	2.586	7106	2.716	7306

### SWIVEL CASTOR WITH FOOT BRAKE



Wheel diameter Tread width D b	Overall height H	Plate dimensions Ax B	Hole spacing axb	Hole width e	Offset m	Pedal length O	Carrying capacity Kg	Plain Bearing Plabe		Roller Bearing Robe		Ball Bearing Babe	
								Unit weight Kg	Code No. 68	Unit weight Kg	Code No. 68	Unit weight Kg	Code No. 68
100 30	138	100x85	80x60	9	46	120	300	1.140	6902	1.170	6922	-	-
125 35	161	100x85	80x60	9	48	120	350	1.305	6903	1.335	6923	-	-
150 45	200	140x110	105x80	11	70	156	550	2.975	6904	3.140	6924	-	-
175 45	225	140x110	105x80	11	70	156	630	3.145	6905	3.280	6925	-	-
200 50	250	140x110	105x80	11	70	156	730	3.390	6906	3.550	6926	3.625	6946