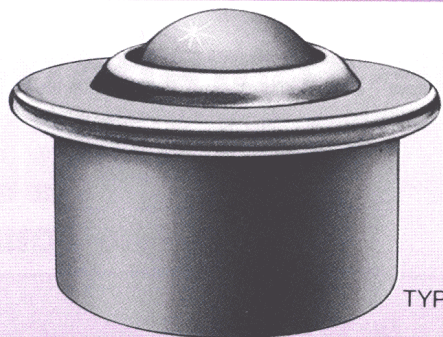
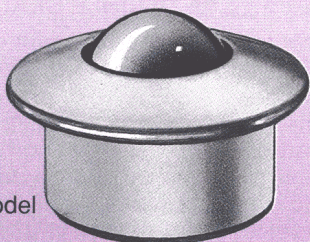


EURO ALWAYS UNITS

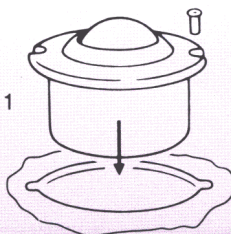


TYPE 0



TYPE 4
Excluding Model
545

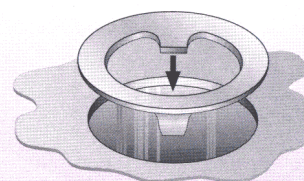
TYPE 1



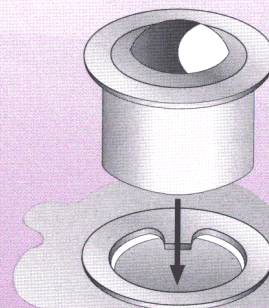
FIRMLY SECURED
WITH POP
RIVETS OR SCREWS.

HOLE SIZES FOR UNITS			
15mm	22mm	30mm	45mm
24 ^{+1.0} / _{+1.5}	36 ^{+1.0} / _{+1.5}	45 ^{+1.0} / _{+1.5}	62 ^{+1.0} / _{+1.5}

TYPE O AND CL14 CLIP



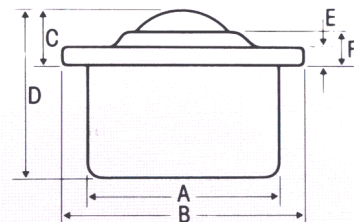
• INSERT
CLIP
INTO
HOLE



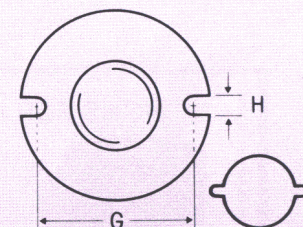
• INSERT
BALL UNIT
TO LOCK
INTO
POSITION
PUSH IN -
PRISE OUT

Ball Size	Type	Specification	Ref. No.	Capacity		Kg Approx Weight	DIMENSIONS M/M											
				N	Kg		A	B	C	D	E	F	G	H				
15mm	0	Steel	515-0-13	500	45	.038												
	0	Nylon ball	515-0-14	70	10	.024												
	0	Completely S/st.	515-0-15	370	35	.038	24	31	9.5	21	2.8	6.3	29	3.5				
	0	S/st brgs steel body	515-0-16	370	35	.038												
TO ORDER TYPE 1 USE REF. 515-1																		
22mm	0	Steel	522-0-13	1300	120	.132												
	0	Nylon ball	522-0-14	100	20	.093												
	0	Completely S/st.	522-0-15	970	90	.132	36	45	9.8	30	2.8	5.5	42	3.5				
	0	S/st brgs steel body	522-0-16	970	90	.132												
TO ORDER TYPE 1 USE REF. 522-1																		
30mm	0	Steel	530-0-13	2500	230	.265												
	0	Nylon ball	530-0-14	150	25	.168												
	0	Completely S/st.	530-0-15	1900	175	.265	45	55	13.8	37	4	8.3	51	3.5				
	0	S/st brgs steel body	530-0-16	1900	175	.265												
TO ORDER TYPE 1 USE REF. 530-1																		
45mm	0	Steel	545-0-13	6000	550	.720												
	0	Nylon ball	545-0-14	—	—	—												
	0	Completely S/st.	545-0-15	—	250	.720	62	75	19	53.5	4	10	69	4.3				
	0	S/st brgs steel body	545-0-16	4500	410	.720												
TO ORDER TYPE 1 USE REF. 545-1																		

TYPE 0 · 15,22,30,45 UNITS



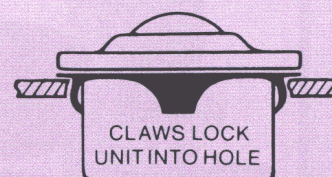
TYPE 1 · 15,22,30,45 UNITS



SLOTTED HOLE REQUIRED.

BALL UNIT	15	22	30	45
RIVET DIA.		3.2		4

TYPE O WITH CL14 CLIP



CLAWS LOCK
UNIT INTO HOLE

CLIP CL 14
522, 530 & 545

The main bearing cup is of special toughened steel with a self cleaning hole and a felt or plastic seal is incorporated in all EURO units except 15mm.
Felt seal standard. Maximum temp +100°C -70°C. Polyurethane foam on request. Maximum temp. +70°C, minimum temp. not available.
Maximum temperature: Steel and Stainless. No Seal. +100°C to +150°C intermittent.

MATERIAL SPECIFICATION: STAINLESS STEEL: TYPE AISI 304
STAINLESS STEEL BEARINGS: TYPE AISI420
NYLON BALLS: NYLON 66