

swissbit®

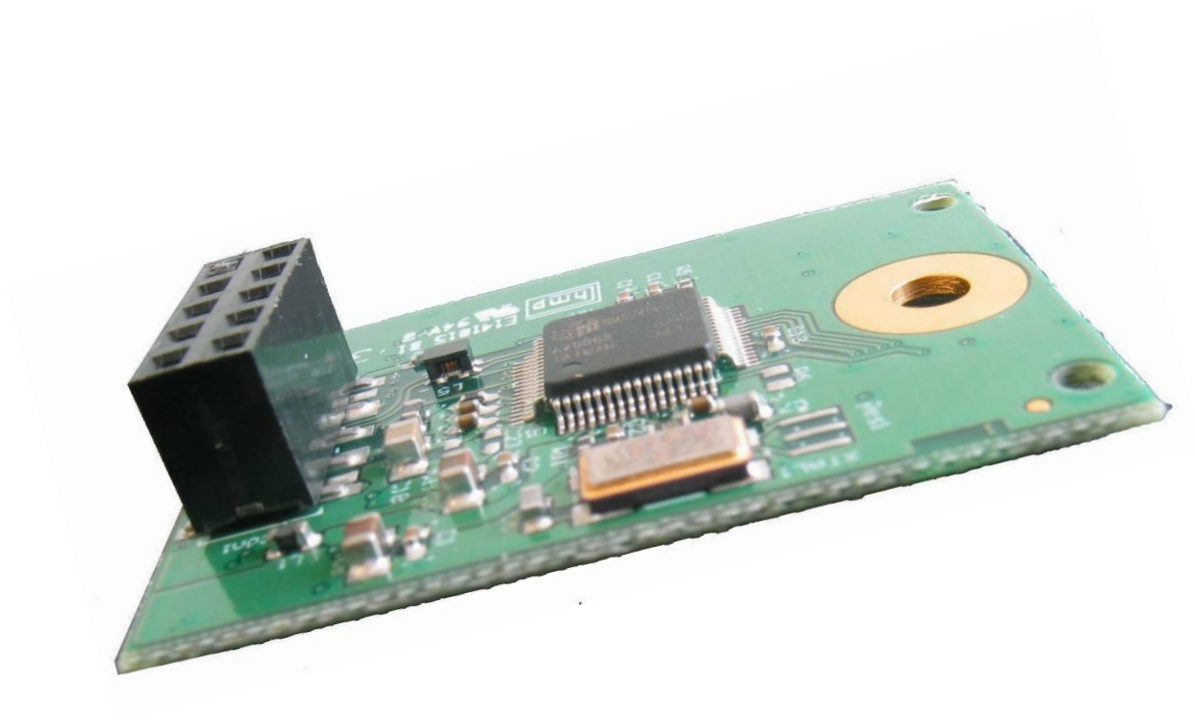
Product data sheet

U-110 Series

Industrial USB Flash Drive Module

BU: Swissbit Group
Date: 28 October 2010
Revision: 1.10

U-110_data_sheet_UI-xxBP_Rev110.doc



++ Swissbit AG, reserves the right to change products or specification without notice ++

U-110 USB Flash Drive Module 1GByte – 8GByte

USB Flash Drive Module provides non-volatile, solid-state storage in a compact design, making it perfectly suited for embedded applications. The standard USB 2.0 interface provides designers with a true plug-n-play storage device, allowing for short design cycles and fast time to market.

Swissbit use high end USB 2.0 flash memory controller in the Module, providing high data reliability and endurance. The built-in BCH-ECC engine can detect up to 9-bit errors and correct up to 8-bit errors, while sophisticated wear leveling algorithms guarantee up to 2,000,000 Write Cycles.

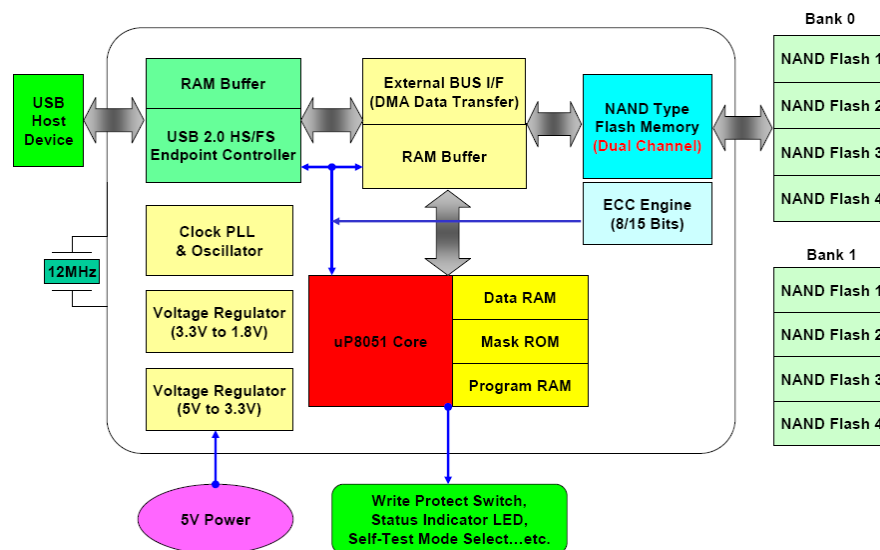
The internal USB Flash Drive Module has an internal 9(10) pin USB connector.

High performance, high reliability and low cost per megabyte make the internal USB Flash Drive Module the product of choice in embedded applications, such as Gaming, POS Workstations, Networking Equipment and Industrial PCs.

Swissbit offers value-added services to OEM customers, such as controlled Bill of Materials, customized preloads, custom setting, customer-specific marking etc.

1 Feature summary

- USB2.0 solid state flash Drive for internal 9(10)-pin USB connector
 - Fully compliant with USB-Specification 2.0 (High-Speed, 480Mb/s burst)
 - Fully backward compliant with USB 1.1 systems (Full speed, 12Mb/s burst)
- High reliability
 - Error correction code (ECC)
 - Wear leveling
 - MTBF >3,000,000 hours
 - Data reliability: < 1 non-recoverable error per 10¹⁴ bits read
- Commercial, extended and industrial temperature grade
- Plug & Play
- Bootable
- Fixed drive
- LED indicator
- FAT32 format
- Unique serial number
- USB-IF high speed certified
- CE / FCC
- RoHS compliant
- WEEE



2 Table of Content

| | |
|---|-----------|
| U-110 USB FLASH DRIVE MODULE 1GBYTE – 8GBYTE | 2 |
| U-110 USB FLASH DRIVE MODULE 1GBYTE – 8GBYTE | 2 |
| 1 FEATURE SUMMARY..... | 2 |
| 2 TABLE OF CONTENT..... | 3 |
| 3 ORDER INFORMATION | 4 |
| 3.1 STANDARD PRODUCT WITH 2.54MM CONNECTOR..... | 4 |
| 3.2 LOW PROFILE PRODUCT WITH 2.00MM CONNECTOR..... | 4 |
| 3.3 OFFERED OPTIONS FOR CUSTOM PRODUCTS | 4 |
| 4 SYSTEM PERFORMANCE..... | 5 |
| 5 INTERFACE..... | 5 |
| 6 NAND FLASH TECHNOLOGIES..... | 5 |
| 7 ELECTRICAL SPECIFICATION | 6 |
| 8 ENVIRONMENTAL SPECIFICATION AND RELIABILITY..... | 7 |
| 8.1 RECOMMENDED OPERATING CONDITIONS..... | 7 |
| 8.2 RELIABILITY | 7 |
| 8.3 SHOCK, VIBRATION, AND HUMIDITY | 7 |
| 9 COMPATIBILITY & COMPLIANCE..... | 7 |
| 10 APPLICATIONS | 8 |
| 11 STANDARD FORM FACTORS AND HARDWARE..... | 8 |
| 12 PART NUMBER DECODER | 11 |
| 13 LABEL..... | 13 |
| 14 PERFORMANCE REFERENCE..... | 14 |
| 14.1 TEST EQUIPMENT | 14 |
| 14.2 PERFORMANCE RESULTS..... | 14 |
| 15 ROHS AND WEEE UPDATE FROM SWISSBIT..... | 15 |
| 16 REVISION HISTORY | 17 |

3 Order Information

3.1 Standard product with 2.54mm connector

| Capacity | Part Number |
|----------|------------------------------|
| 1GB | SFUI1024JgBP2xx-t-xx-2f1-STD |
| 2GB | SFUI2048JgBP2xx-t-xx-2f1-STD |
| 4GB | SFUI4096JgBP2xx-t-xx-2f1-STD |
| 8GB | SFUI8192JgBP2xx-t-xx-2f1-STD |

Table 1: Product List – 2.54mm

g = hardware generation

t = temperature grade (C=0°C to 70°C, E=-25°C to +85°C and I=-40°C to +85°C)

f = firmware generation per product generation

3.2 Low profile product with 2.00mm connector

| Capacity | Part Number |
|----------|------------------------------|
| 1GB | SFUI1024KgBP2xx-t-xx-2f1-STD |
| 2GB | SFUI2048KgBP2xx-t-xx-2f1-STD |
| 4GB | SFUI4096KgBP2xx-t-xx-2f1-STD |
| 8GB | SFUI8192KgBP2xx-t-xx-2f1-STD |

Table 2: Product List – 2.00mm

g = hardware generation

t = temperature grade (C=0°C to 70°C, E=-25°C to +85°C and I=-40°C to +85°C)

f = firmware generation per product generation

3.3 Offered options for custom products

- Removable or fixed drive
- Customer specified strings and IDs
- FAT16, FAT32 format or customer file system, default FAT32
- Preload service
- CD partition
- Auto run option
- Dongle functionality
- Extended and Industrial Temperature range

Please ask our sales for more details and additional features.

4 System performance

| Speed | High Speed mode (max) | Full Speed mode (max) | unit |
|-------|-----------------------|-----------------------|---------|
| Burst | 480 | 12 | Mbit/s |
| Read | 32 ¹⁾ | 1.0 | MByte/s |
| Write | 23 ¹⁾ | 0.9 | |

¹⁾ Effective speed varies with controller, number and type of flash, host, file size, file system and operating system
The USB drive can be busy for max. 320ms from time to time due to internal reorganization.

5 Interface

- USB-connector 10pin (2mm or 2.54mm pitch)
- USB 2.0 high speed interface, USB1.1 full speed compatible

| Pin | Signal | Comment |
|-----|--------|---|
| 1 | V Bus | Operating voltage |
| 2 | NC | Not Connected |
| 3 | D- | Data signal pair |
| 4 | NC | Not Connected |
| 5 | D+ | Data signal pair |
| 6 | NC | Not Connected |
| 7 | GND | Ground |
| 8 | NC | Not Connected |
| 9 | NC | Keyed at the 2.54mm connector Keyed at the 2.00mm connector (optional not keyed) |
| 10 | Shield | should be connected with host shield, is connected with card ground for standard products, could be configured as NC on request |

6 NAND Flash technologies

SLC and MLC flash

- Single-level-cell (SLC) flash, 1 bit (1 level) is stored in each memory cell
- Multi-level-cell (MLC) flash, 2 bit (3 level) are stored in each memory cell

Differences

| | SLC | MLC ¹⁾ | comment |
|-------------------|------------|-------------------|---|
| Endurance | ~100,000 | ~5,000 | physical write/erase cycles |
| Write Performance | fast write | slow write | MLC write is more time consuming because of 4 states |
| Read Performance | fast read | fast read | MLC and SLC technology is similar in the read performance |
| Reliability | high | normal | errors are more likely, because the 4 states |
| Price | expensive | cheap | the same capacity can be stored in less silicon |

¹⁾ Not recommended for OEM market or industrial applications

7 Electrical Specification

Absolute Maximum Ratings

| Parameter | Symbol | Min | Max | Unit |
|----------------------------------|-------------------|------|-----|------|
| Power Supply Voltage | V _{Bus} | -0.5 | 6.0 | V |
| Voltage on D+ and D- | V _{Data} | -0.5 | 3.6 | |
| Commercial Operating Temperature | T _A | 0 | 70 | °C |
| Extended Operating Temperature | | -25 | 85 | |
| Industrial Operating Temperature | | -40 | 85 | |

DC characteristics for Full-Speed operation (T=25°C, V_{Bus}=5V)

| Parameter | Symbol | Test condition | Min | Typ | Max | Unit |
|---------------------------------|------------------|---------------------------------|------|------|------|------|
| Supply Voltage | V _{Bus} | | 4.75 | 5.00 | 5.25 | V |
| Operating current | I _{CC} | V _{Bus} =5.0V | 60 | 90 | 120 | mA |
| Suspend current | I _{CCS} | | 350 | | 500 | µA |
| Input LOW Voltage | V _{IL} | | | | 0.8 | V |
| Input HIGH Voltage | V _{IH} | | 2 | | | |
| Output LOW Voltage | V _{OL} | R _L of 1.5kΩ to 3.6V | | | 0.3 | |
| Output HIGH Voltage | V _{OH} | R _L of 15kΩ to GND | 2.8 | | 3.6 | |
| Output Signal Crossover Voltage | V _{CRS} | | 1.3 | | 2.0 | |

DC characteristics for High-Speed operation (T=25°C, V_{Bus}=5V)

| Parameter | Symbol | Test condition | Min | Typ | Max | Unit |
|--------------------------------|---------------------|------------------------|------|------|------|------|
| Supply Voltage | V _{Bus} | | 4.75 | 5.00 | 5.25 | V |
| Operating current | I _{CC} | V _{Bus} =5.0V | 60 | 100 | 180 | mA |
| Suspend current | I _{CCS} | | 350 | | 500 | µA |
| High Speed Idle Level | V _{HSOI} | | -10 | | 10 | mV |
| High Speed Data Signaling LOW | V _{HSOL} | | -10 | | 10 | |
| High Speed Data Signaling HIGH | V _{HSOH} | | 360 | | 440 | |
| Chirp J Level (differential) | V _{CHIRPJ} | | 360 | | 440 | |
| Chirp K Level (differential) | V _{CHIRPK} | | -440 | | -360 | |

8 Environmental Specification and Reliability

8.1 Recommended operating conditions

| Parameter | Symbol | Min | Typ | Max | Unit |
|----------------------------------|--------|-----|-----|-----|------|
| Commercial Operating Temperature | T_A | 0 | 25 | 70 | °C |
| Extended Operating Temperature | | -25 | | 85 | |
| Industrial Operating Temperature | | -40 | | 85 | |
| Storage Temperature | T_S | -50 | | 100 | |

8.2 Reliability

| Parameter | Value |
|-----------------------------|---|
| Endurance (SLC NAND Flash) | ~2'000'000 cycles ¹⁾ |
| Data reliability | 1 in 10 ¹⁴ bits, read |
| Error correction code (ECC) | BCH detect up to 9-bit errors / correct up to 8-bit errors per sector |
| MTBF / MTF | > 3,000,000 hours |
| Data retention | 10 years @ 10% life time / 1 years @ life end |
| Durability | > 1500 insertions / removals |

¹⁾ 100'000 program/erase cycles NAND Flash cell endurance / average file size written = 5% of device capacity (50MB for 1GB device)/no static data

8.3 Shock, Vibration, and Humidity

| Parameter | Value |
|-----------|---|
| Shock | 1500G Peak, 0.5m pulse duration, 5 pulses, 6 axes (JESD22-B110) |
| Vibration | 20G Peak, 20-2000 Hz, 4 cycles per direction (X, Y and Z) (JESD22-B103) |
| Humidity | 85°C, 85% RH, V _{max} for 500 hrs (JESD22-A101) |

9 Compatibility & Compliance

- Configurable as boot-drive
- Standard fix Configuration (mounted as local drive, not as removable drive)
- Operating Systems:
 - Windows CE
 - Windows Server 2003 and 2008
 - Windows 7, Vista, XP, 2000, ME
 - Win98 SE (driver available)
 - Mac 9.0 and newer
 - Mac 8.6 (with driver) and newer
 - Linux 2.4 and newer
 - All USB mass-storage host systems (guarantee on all USB-IF certified systems)
- CE – EN 55022/55024
- FCC class B for information technology
- USB-IF high speed certified
- RoHS
- UL60950 compliant PCB
- WEEE

10 Applications

- Gaming
- Industrial PCs
- Point-Of-Sale (POS)
- Industrial Automation
- Networking Equipment
- Medical Equipment
- Data Recorders

11 Standard form factors and hardware

- Standard form factor of PCBs 36.8mm x 26.65mm
- Hole for mechanical fixture (optional grounded)
- Shield (connector Pin 10) grounded (optional NC)
- 2 additional holes
- LED for operation indication (optional no LED)
- 2 connector types
 - 2.54mm pitch, 7.5mm long standard
 - 2.00mm pitch, 3.6mm long low profile
- Component heights
 - max. 1.6mm on connector side
 - max. 1.2mm on flash side (2.4mm for stacked flash)

Figure 1: Mechanical Dimensions for 2.54mm connector (standard)

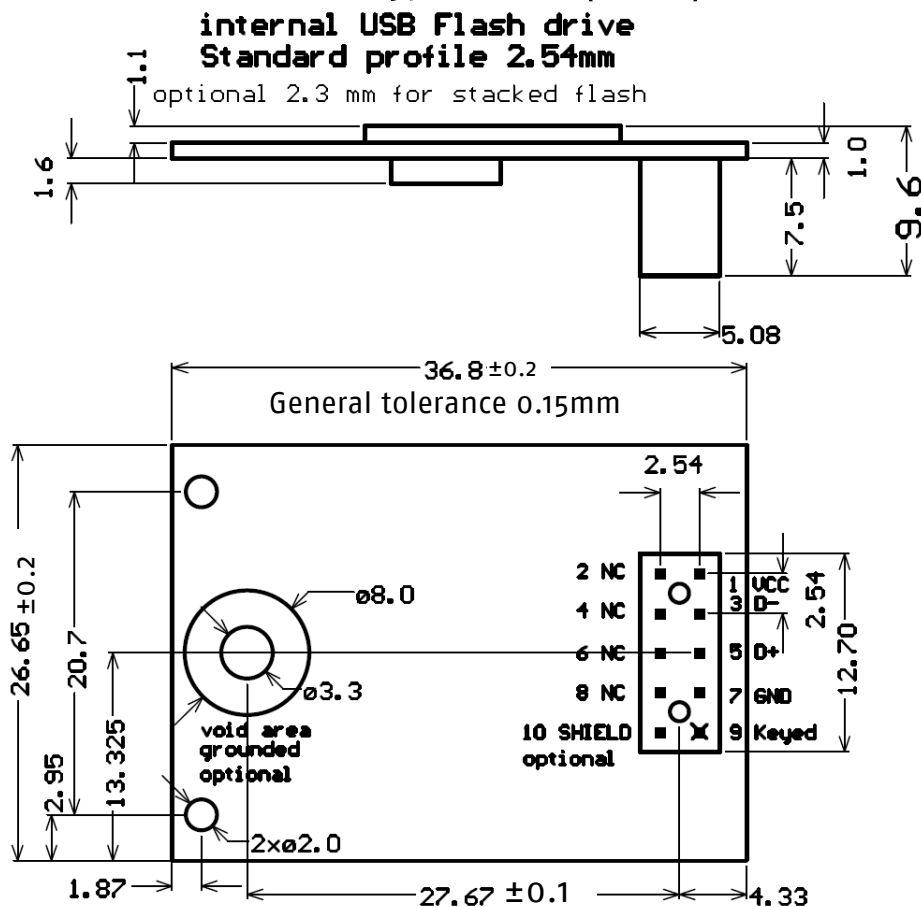
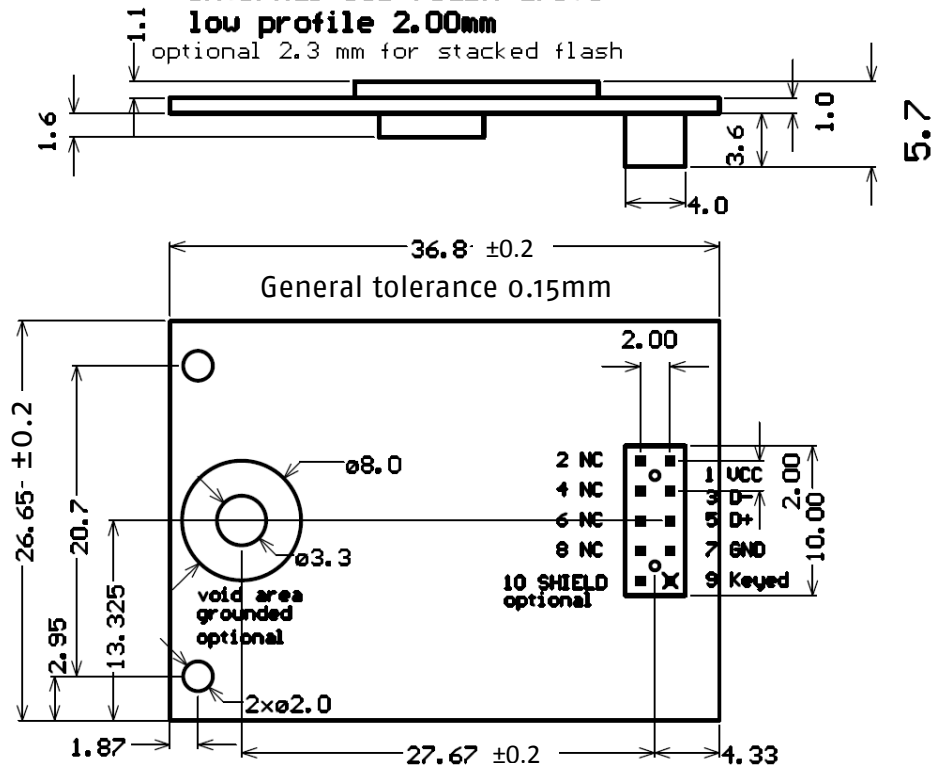


Figure 2: Mechanical Dimensions for 2.00mm connector (low profile)

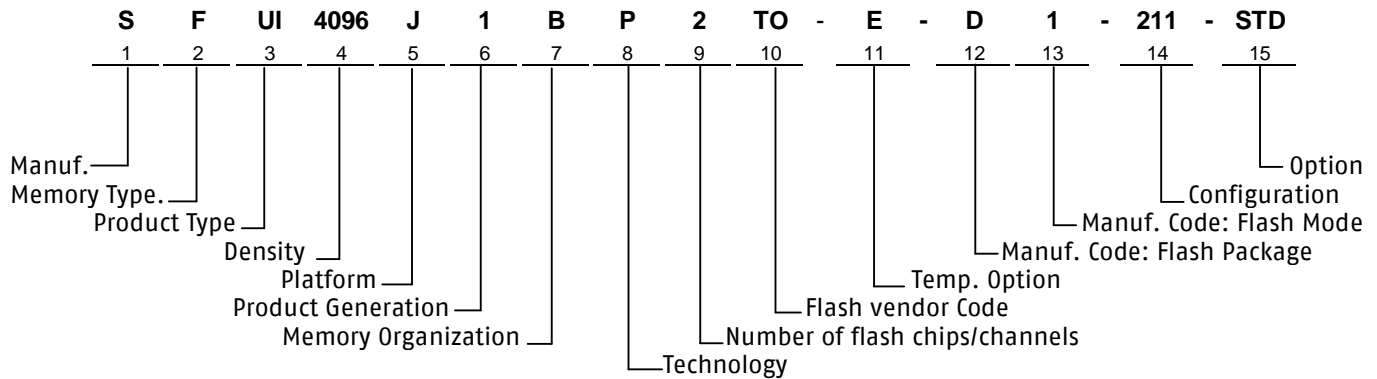
internal USB Flash drive

low profile 2.00mm

optional 2.3 mm for stacked flash



12 Part Number Decoder



1. Manufacturer

| | |
|----------|---|
| Swissbit | S |
|----------|---|

2. Memory Type

| | |
|-------|---|
| Flash | F |
|-------|---|

3. Product Type

| | |
|---|----|
| U-1xx USB Flash Drive Module (Internal) | UI |
|---|----|

4. Capacity

| | |
|------|------|
| 1 GB | 1024 |
| 2 GB | 2048 |
| 4 GB | 4096 |
| 8 GB | 8192 |

5. Platform

| | |
|---------------------|---|
| U-1xx - 2.54mm plug | J |
| U-1xx - 2.00mm plug | K |

6. Product Generation

7. Memory Organization

| | |
|----|---|
| x8 | B |
|----|---|

8. Technology

| | |
|------------------|---|
| U-100 technology | F |
| U-110 technology | P |

9. Number of Flash channels

| | |
|---------|---|
| 1 Flash | 1 |
| 2 Flash | 2 |

10. Flash Code

| | |
|---------|----|
| Samsung | SA |
| Toshiba | TO |

11. Temp. Option

| | |
|--------------------------------------|---|
| Industrial Temp. Range -40°C to 85°C | I |
| Extended Temp. Range -25°C to 85°C | E |
| Standard Temp. Range 0°C to 70°C | C |

12. DIE Classification

| | |
|-------------------------------|---|
| SLC MONO (single die package) | M |
| SLC DDP (dual die package) | D |
| SLC QDP (quad die package) | Q |

13. PIN Mode

| | |
|----------------------|-----|
| Normal nCE & R/nB | 0/S |
| Dual nCE & Dual R/nB | 1/T |

14. UFD XYZ

X → Setting

| | |
|-----------|---|
| Fix Drive | 2 |
|-----------|---|

Y → Firmware revision per product generation

| | |
|----------|---|
| Standard | 1 |
|----------|---|

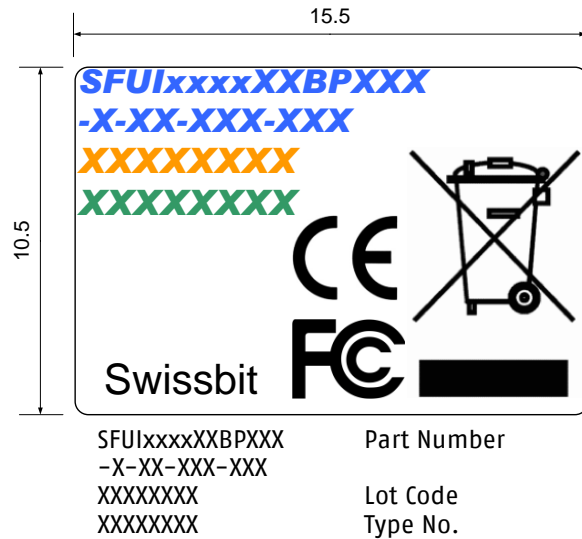
Z → Optional setting

| | |
|---------|---|
| default | 1 |
|---------|---|

15. Option

| | |
|---------------------|-----|
| Swissbit / Standard | STD |
| Customized version | XXX |

13 Label



14 Performance reference

14.1 Test Equipment

| | | | |
|-------------|-------------------------|---------------|---|
| Mainboard: | ASUS P5LD2 | CPU: | Intel Core 2 4400 @2.0GHz |
| OS: | Win XP Prof. V.2002 SP3 | Testsoftware: | Swissbit FlashTest 1.2.1 / Script „Performance“ |
| Firmware: | Io112 | Prod.Tool: | SPT 1.0.22 SDK: 1.0.24 |
| Filesystem: | Low level | | |

14.2 Performance results

The effective speed depends on Controller, Number and type of flash, File system and file size, Test tool & OS. Cards with the low-profile connector (Partnumber ... K1BP...) have the same properties.

| | Random Read [kByte/sec] | | Random Write [kByte/sec] | |
|-----------------------|--------------------------------|-----------------------------|---------------------------------|-----------------------------|
| | 8 sector - 4kByte | 128 sector - 64kByte | 8 sector - 4kByte | 128 sector - 64kByte |
| SFUI1024J1BP2TO-I-MS* | ~5800 | ~24800 | ~100 | ~1600 |
| SFUI2048J1BP2TO-I-DS* | ~5800 | ~26500 | ~75 | ~1200 |
| SFUI4096J1BP2TO-I-DT* | ~5800 | ~26000 | ~75 | ~1150 |
| SFUI8192J1BP2TO-I-QT* | ~5400 | ~25900 | ~75 | ~1150 |

| | Sequential Read [kByte/sec] | | Sequential Write [kByte/sec] | |
|-----------------------|------------------------------------|-----------------------------|-------------------------------------|-----------------------------|
| | 8 sector - 4kByte | 128 sector - 64kByte | 8 sector - 4kByte | 128 sector - 64kByte |
| SFUI1024J1BP2TO-I-MS* | ~7800 | ~26200 | ~6500 | ~8100 |
| SFUI2048J1BP2TO-I-DS* | ~8100 | ~28500 | ~4600 | ~11800 |
| SFUI4096J1BP2TO-I-DT* | ~8100 | ~28700 | ~4600 | ~20800 |
| SFUI8192J1BP2TO-I-QT* | ~8000 | ~28900 | ~4600 | ~20800 |

15 RoHS and WEEE update from Swissbit

Dear Valued Customer,

We at Swissbit place great value on the environment and thus pay close attention to the diverse aspects of manufacturing environmentally and health friendly products. The European Parliament and the Council of the European Union have published two Directives defining a European standard for environmental protection. This states that CompactFlash Cards must comply with both Directives in order for them to be sold on the European market:

- **RoHS** – Restriction of Hazardous Substances
- **WEEE** – Waste Electrical and Electronic Equipment

Swissbit would like to take this opportunity to inform our customers about the measures we have implemented to adapt all our products to the European norms.

What is the WEEE Directive (2002/96/EC)?

The Directive covers the following points:

- Prevention of WEEE
- Recovery, recycling and other measures leading to a minimization of wastage of electronic and electrical equipment
- Improvement in the quality of environmental performance of all operators involved in the EEE life cycle, as well as measures to incorporate those involved at the EEE waste disposal points

What are the key elements?

The WEEE Directive covers the following responsibilities on the part of producers:

Producers must draft a disposal or recovery scheme to dispose of EEE correctly.
Producers must be registered as producers in the country in which they distribute the goods.
They must also supply and publish information about the EEE categories.
Producers are obliged to finance the collection, treatment and disposal of WEEE.

Inclusion of WEEE logos on devices

In reference to the Directive, the WEEE logo must be printed directly on all devices that have sufficient space. «In exceptional cases where this is necessary because of the size of the product, the symbol of the WEEE Directive shall be printed on the packaging, on the instructions of use and on the warranty»
(WEEE Directive 2002/96/EC)

When does the WEEE Directive take effect?

The Directive came into effect internationally on 13 August, 2005.

What is RoHS (2002/95/EC)?

The goals of the Directive are to:

- Place less of a burden on human health and to protect the environment by restricting the use of hazardous substances in new electrical and electronic devices
- To support the WEEE Directive (see above)

RoHS enforces the restriction of the following 6 hazardous substances in electronic and electrical devices:

- Lead (Pb) – no more than 0.1% by weight in homogeneous materials
- Mercury (Hg) – no more than 0.1% by weight in homogeneous materials
- Cadmium (Cd) – no more than 0.01% by weight in homogeneous materials
- Chromium (Cr6+) – no more than 0.1% by weight in homogeneous materials
- PBB, PBDE – no more than 0.1% by weight in homogeneous materials

Swissbit is obliged to minimize the hazardous substances in the products.

According to part of the Directive, manufacturers are obliged to make a self-declaration for all devices with RoHS. Swissbit carried out intensive tests to comply with the self-declaration. We have also already taken steps to have the analyses of the individual components guaranteed by third-party companies.

Swissbit carried out the following steps during the year with the goal of offering our customers products that are fully compliant with the RoHS Directive.

- **Preparing all far-reaching directives, logistical enhancements and alternatives regarding the full understanding and introduction of the RoHS Directive's standards**
- **Checking the components and raw materials:**
 - Replacing non-RoHS-compliant components and raw materials in the supply chain
 - Cooperating closely with suppliers regarding the certification of all components and raw materials used by Swissbit
- **Modifying the manufacturing processes and procedures**
 - Successfully adapting and optimizing the new management-free integration process in the supply chain
 - Updating existing production procedures and introducing the new procedures to support the integration process and the sorting of materials
- **Carrying out the quality process**
 - Performing detailed function and safety tests to ensure the continuous high quality of the Swissbit product line

When does the RoHS Directive take effect?

As of 1 July, 2006, only new electrical and electronic devices with approved quantities of RoHS will be put on the market.

When will Swissbit be offering RoHS-approved products?

Swissbit's RoHS-approved products are available now. Please contact your Swissbit contact person to find out more about exchanging your existing products for RoHS-compliant devices.

For your attention

We understand that packaging and accessories are not EEE material and are therefore not subject to the WEEE or RoHS Directives.

Contact details:

Swissbit AG
 Industriestrasse 4
 CH 9552 Bronschhofen
 Tel: +41 71 913 03 03 – Fax: +41 71 913 03 15
 E-mail: industrial@swissbit.com – Website: www.swissbit.com

16 Revision History

Document Revision History

| Date | Revision | Revision Details |
|------------------|----------|---|
| 23-November-2009 | 1.00 | Final release |
| 28-October-2010 | 1.10 | General part numbers update, speed values for Toshiba flash |