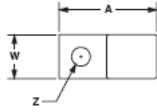


PAN-STEEL Stainless Steel Cable Tie Mounts

Pan-steel Catalogue

MTM1H Stainless Steel Tie Mount



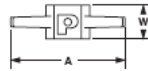
- Low profile
- One hole mounting
- For use with standard, light-heavy and heavy cross section PAN-STEEL® ties as well as .375" (9.5mm) wide strapping
- 304 Stainless Steel

Part Number	Used with PAN-STEEL® Ties/Strapping	Mounting Method*	Length A		Width W		Height H		Hole Diameter Z		Std. Pkg. Qty.
			In.	mm	In.	mm	In.	mm	In.	mm	
MTM1H-C	MLTS/LH/H, MS375 or MSC375	#8 (4.0mm) screw	.90	22.6	.40	10.2	.17	4.4	.17	4.4	100
MTM1H10-C	MLTS/LH/H, MS375 or MSC375	#10 (5.0mm) screw	.90	22.6	.40	10.2	.17	4.4	.21	5.4	100
MTM1H25-C	MLTS/LH/H, MS375 or MSC375	1/4" (6 mm) screw	.90	22.6	.40	10.2	.17	4.4	.28	7.1	100

*Stainless steel screws are recommended for fastening to avoid corrosion problems associated with dissimilar metals.

PLEASE NOTE, MTM1H25-C is already in the catalogue. The other items are for adding to that module (208084, page 141).

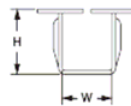
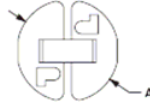
Stainless Steel Push Mount



- No tapping required
- Used where only one side of the panel is accessible
- Nothing to assemble
- For use with standard, light-heavy and heavy cross section PAN-STEEL® ties
- 304 Stainless Steel

Part Number	Used with PAN-STEEL® Ties/Strapping	Mounting Method	Length A		Width W		Height H		Panel Thickness P		Std. Pkg. Qty.
			In.	mm	In.	mm	In.	mm	In.	mm	
MPWM-H56-Q	MLTS/LH/H	Inserted into pre-drilled hole 5/16 in. (8 mm).	.98	24.7	.29	7.3	.56	14.2	.031 – .094	0.8 – 2.4	25

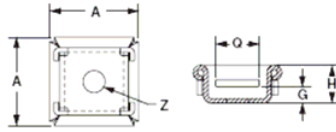
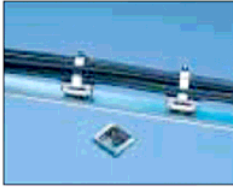
Stainless Steel Push Button Mount



- Low profile
- No tapping required
- Designed for use only where both sides of the panel are accessible
- For use with standard cross section PAN-STEEL® ties
- 304 Stainless Steel

Part Number	Used with PAN-STEEL® Ties/Strapping	Mounting Method	Diameter D		Width W		Height H		Panel Thickness		Std. Pkg. Qty.
			In.	mm	In.	mm	In.	mm	In.	mm	
MBM-H25-Q	MLT-S	Inserted into pre-drilled hole .25 in. (6.4mm).	.40	10.0	.20	5.0	.26	6.5	.03 – .13	.8 – 4.0	25

Stainless Steel 2-Way Mount

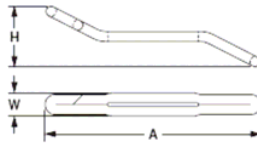


- Two-way mount allows stainless steel cable ties to be inserted from either of two sides
- Low profile
- Single hole center mounting for maximum holding and stability
- Maximum screw head height .09 (2.3mm)
- For use with standard, light-heavy and heavy cross section *PAN-STEEL*® ties
- 304 Stainless Steel

Part Number	Used with <i>PAN-STEEL</i> ® Ties/Strapping	Mounting Method*	Length A		Height H		Screw Head Height G		Slot Width Q		Hole Diameter Z		Std. Pkg. Qty.
			In.	mm	In.	mm	In.	mm	In.	mm	In.	mm	
MTM2H-Q	MLTS/LH/H	#8 (4 mm) screw	.71	18.0	.30	8.0	.09	2.3	.35	9.0	.17	4.5	25

*Stainless steel screws are recommended for fastening to avoid corrosion problems associated with dissimilar metals.

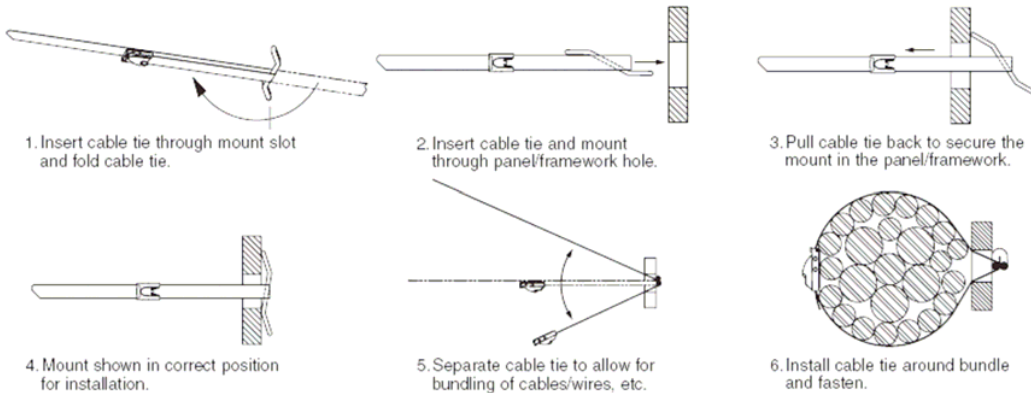
Stainless Steel Bulkhead Mount



- Zero profile
- Mounts directly to surface
- Used where only one side of the panel is accessible
- Permanent, secure application
- Used with standard, light-heavy and heavy cross section *PAN-STEEL*® ties
- 304 Stainless Steel

Part Number	Used with <i>PAN-STEEL</i> ® Ties/Strapping	Mounting Method	Length A		Width W		Height H		Max. Panel Thickness		Std. Pkg. Qty.
			In.	mm	In.	mm	In.	mm	In.	mm	
MTMBH-Q	MLTS/LH/H	Pre-drill hole size Standard and Light Heavy cross section MLT-S/LH .375 (9.5) – .500 (12.7) Heavy cross section MLT-H .500 (12.7) – .625 (15.9)	1.92	48.5	.21	5.3	.54	13.7	.50	12.7	25

To Install Bulkhead Mount:



1. Insert cable tie through mount slot and fold cable tie.

2. Insert cable tie and mount through panel/framework hole.

3. Pull cable tie back to secure the mount in the panel/framework.

4. Mount shown in correct position for installation.

5. Separate cable tie to allow for bundling of cables/wires, etc.

6. Install cable tie around bundle and fasten.