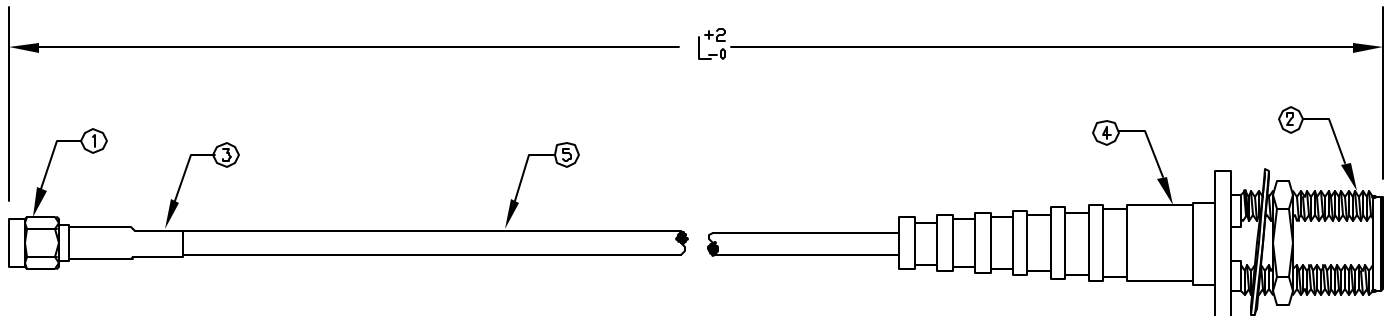


All rights Reserved . No Portion of this publication, whether in whole or in part can be reproduced without the express written consent of SPC Technology.

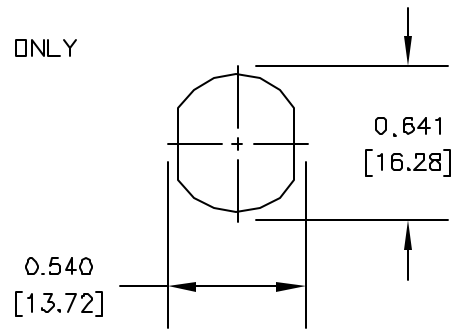
Revisions:			DOC. No.	* Effective: 12/21/98	* DCP No. 680			
DCP: #	REV	Description:	Drawn	Date	Checked	Date	Approved	Date
XXX	A	RELEASED	Ilvya	27-11-08	Suresh	27-11-08	JN	12/12/08



STRAIN RELIEF SHOWN AS ILLUSTRATION ONLY

ITEM	DESCRIPTION	MATERIAL	FINISH
5	CABLE	-	-
4	TUBING	**HEAT SHRINK	BLACK
3	STRAIN RELIEF	POLYVINYL CHLORIDE	BLACK
2	N F CRIMP BULK	BRASS	NICKEL
1	SMA MALE CRIMP	BRASS	NICKEL

**DUAL WALL POLYOLEFIN



SUGGESTED MOUNTING CONFIGURATION

Manufacturer Part Number	Length	Cable Type	Strain Relief
SPC28596	12	RG-55B/U	No
SPC28597	24	RG-55B/U	No
SPC28598	36	RG-55B/U	No
SPC28599	48	RG-55B/U	No
SPC28600	60	RG-55B/U	No
SPC28601	72	RG-55B/U	No
SPC28602	12	RG-58A/U	Yes
SPC28603	24	RG-58A/U	Yes
SPC28604	36	RG-58A/U	Yes
SPC28605	48	RG-58A/U	Yes
SPC28606	60	RG-58A/U	Yes
SPC28607	72	RG-58A/U	Yes
SPC28608	12	RG-58C/U	Yes
SPC28609	24	RG-58C/U	Yes
SPC28610	36	RG-58C/U	Yes

Disclaimer:

All statements and technical information contained herein are based upon information and/or tests we believe to be accurate and reliable. Since conditions of use are beyond our control, the user shall determine the suitability of the product for the intended use and assume all risk and liability whatsoever in connection therewith.



SPC TECHNOLOGY

Drawing Title: **SMA MALE CRIMP TO N FEMALE CRIMP BULKHEAD**

Size: A Dwg. No: TA-1015 Electronic File: TA-1015.dwg Rev: A

Scale: NTS U.O.M.: Inches (mm) Sheet: 1 of 2

Unless otherwise specified, Dimensions are for references purposes only.

Drawn By:	Date:
Ilvya	27-11-08
Checked By:	Date:
Suresh	27-11-08
Approved By:	Date:
Jason Nash	12/12/08

All rights Reserved . No Portion of this publication, whether in whole or in part can be reproduced without the express written consent of SPC Technology.

Revisions:			DOC. No.		* Effective: 12/21/98		* DCP No. 680	
DCP: #	REV	Description:	Drawn	Date	Checked	Date	Approved	Date
XXX	A	RELEASED	Divya	27-11-08	Suresh	27-11-08	JN	12/12/08

Manufacturer Part Number	Length	Cable Type	Strain Relief
SPC28611	48	RG-58C/U	Yes
SPC28612	60	RG-58C/U	Yes
SPC28613	72	RG-58C/U	Yes
SPC28614	12	RG-142B/U	No
SPC28615	24	RG-142B/U	No
SPC28616	36	RG-142B/U	No
SPC28617	48	RG-142B/U	No
SPC28618	60	RG-142B/U	No
SPC28619	72	RG-142B/U	No
SPC28620	12	RG-223/U	No
SPC28621	24	RG-223/U	No
SPC28622	36	RG-223/U	No
SPC28623	48	RG-223/U	No
SPC28624	60	RG-223/U	No
SPC28625	72	RG-223/U	No
SPC28626	12	RG-400/U	No
SPC28627	24	RG-400/U	No
SPC28628	36	RG-400/U	No
SPC28629	48	RG-400/U	No
SPC28630	60	RG-400/U	No
SPC28631	72	RG-400/U	No
SPC28632	12	LMR-195	No
SPC28633	24	LMR-195	No
SPC28634	36	LMR-195	No
SPC28635	48	LMR-195	No
SPC28636	60	LMR-195	No
SPC28637	72	LMR-195	No
SPC28638	12	RG-174A/U	No
SPC28639	24	RG-174A/U	No
SPC28640	36	RG-174A/U	No
SPC28641	48	RG-174A/U	No
SPC28642	60	RG-174A/U	No
SPC28643	72	RG-174A/U	No
SPC28644	12	RG-188A/U	No
SPC28645	24	RG-188A/U	No
SPC28646	36	RG-188A/U	No
SPC28647	48	RG-188A/U	No
SPC28648	60	RG-188A/U	No
SPC28649	72	RG-188A/U	No
SPC28650	12	RG-316/U	No
SPC28651	24	RG-316/U	No
SPC28652	36	RG-316/U	No
SPC28653	48	RG-316/U	No
SPC28654	60	RG-316/U	No
SPC28655	72	RG-316/U	No
SPC28656	12	LMR-100	No
SPC28657	24	LMR-100	No
SPC28658	36	LMR-100	No
SPC28659	48	LMR-100	No
SPC28660	60	LMR-100	No
SPC28661	72	LMR-100	No
SPC28662	12	RG-188A/U DS	No
SPC28663	24	RG-188A/U DS	No
SPC28664	36	RG-188A/U DS	No
SPC28665	48	RG-188A/U DS	No
SPC28666	60	RG-188A/U DS	No
SPC28667	72	RG-188A/U DS	No
SPC28668	12	RG-316/U DS	No
SPC28669	24	RG-316/U DS	No
SPC28670	36	RG-316/U DS	No
SPC28671	48	RG-316/U DS	No
SPC28672	60	RG-316/U DS	No
SPC28673	72	RG-316/U DS	No



Disclaimer:

All statements and technical information contained herein are based upon information and/or tests we believe to be accurate and reliable. Since conditions of use are beyond our control, the user shall determine the suitability of the product for the intended use and assume all risk and liability whatsoever in connection therewith.



SPC TECHNOLOGY

Unless otherwise specified, Dimensions are for references purposes only.	Drawn By:	Date:	Drawing Title:			
	Divya	27-11-08	SMA MALE CRIMP TO N FEMALE CRIMP BULKHEAD			
	Checked By:	Date:	Size:	Dwg. No	Electronic File	Rev
	Suresh	27-11-08	A	TA-1015	TA-1015.dwg	A
Approved By:	Date:	Scale: NTS		U.O.M.: Inches (mm)	Sheet: 2 of 2	
Jason Nash	12/12/08					