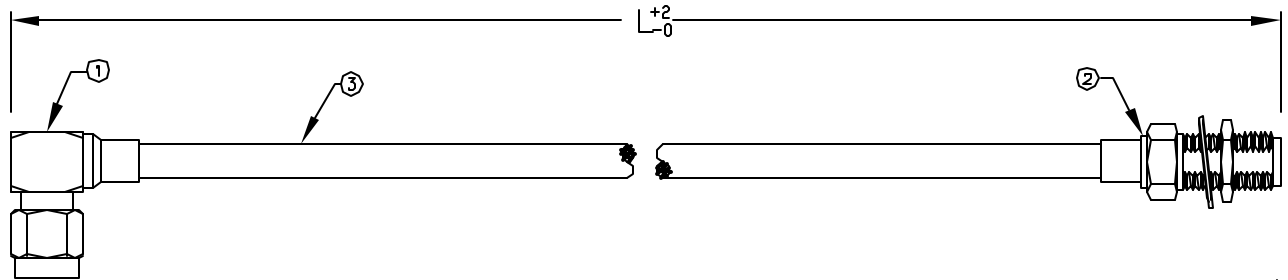
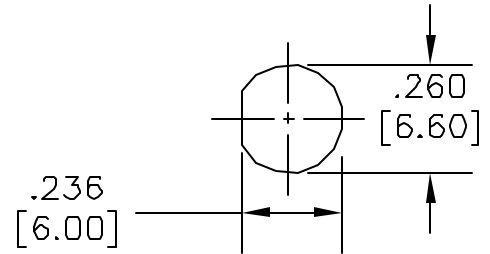


All rights Reserved . No Portion of this publication, whether in whole or in part can be reproduced without the express written consent of SPC Technology.

Revisions:			DOC. No.	* Effective: 12/21/98	* DCP No. 680			
DCP: #	REV	Description:	Drawn	Date	Checked	Date	Approved	Date
XXX	A	RELEASED	Anudha	27-11-08	Suresh	27-11-08	JN	12/12/08



ITEM	DESCRIPTION	MATERIAL	FINISH
3	CABLE	-	-
2	SMA F/S/R BULK	BRASS	NICKEL
1	SMA MALE S/R R/A	BRASS	GOLD



SUGGESTED MOUNTING CONFIGURATION

Manufacturer Part Number	Length	Cable Type	Strain Relief
SPC28496	12	RG-402/U	No
SPC28497	24	RG-402/U	No
SPC28498	36	RG-402/U	No
SPC28499	48	RG-402/U	No
SPC28500	60	RG-402/U	No
SPC28501	72	RG-402/U	No
SPC28502	12	SR402FL	No
SPC28503	24	SR402FL	No
SPC28504	36	SR402FL	No
SPC28505	48	SR402FL	No
SPC28506	60	SR402FL	No
SPC28507	72	SR402FL	No

Disclaimer:

All statements and technical information contained herein are based upon information and/or tests we believe to be accurate and reliable. Since conditions of use are beyond our control, the user shall determine the suitability of the product for the intended use and assume all risk and liability whatsoever in connection therewith.



SPC TECHNOLOGY

Drawing Title: **SMA MALE SEMI RIGID RIGHT ANGLE TO SMA FEMALE SEMI RIGID BULKHEAD**

Unless otherwise specified, Dimensions are for references purposes only.	Drawn By:	Date:	Size: A	Dwg. No TA-1033	Electronic File TA-1033.dwg	Rev A
	Amudha	27-11-08				
	Checked By:	Date:				
	Suresh	27-11-08				
	Approved By:	Date:				
	Jason Nash	12/12/08				

Scale: NTS

U.O.M.: Inches (mm)

Sheet: 1 of 1