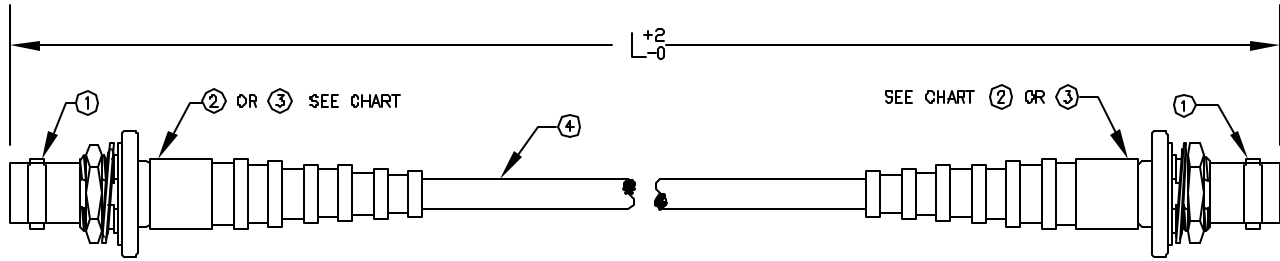


All rights Reserved . No Portion of this publication, whether in whole or in part can be reproduced without the express written consent of SPC Technology.

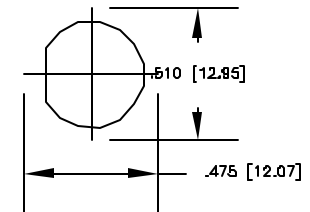
Revisions:			DOC. No.		* Effective: 12/21/98		* DCP No. 680	
DCP: #	REV	Description:	Drawn	Date	Checked	Date	Approved	Date
XXX	A	RELEASED	Divya	20-11-08	Suresh	20-11-08	JN	12/12/08



STRAIN RELIEF SHOWN AS ILLUSTRATION ONLY

ITEM	DESCRIPTION	MATERIAL	FINISH
4	CABLE	-	-
3	TUBING	**HEAT SHRINK	BLACK
2	STRAIN RELIEF	POLYVINYLCHLORIDE	BLACK
1	BNC F CRIMP BULK	BRASS	NICKEL

**DUAL WALL POLYOLEFIN



SUGGESTED MOUNTING CONFIGURATION

Manufacturer Part Number	Product Description	Length	Cable Type	Strain Relief
SPC27026	BNC Female Bulkhead to BNC Female Bulkhead, RG-55B/U Cable, 24", Cr/Cr	24	RG-55B/U	No
SPC27028	BNC Female Bulkhead to BNC Female Bulkhead, RG-55B/U Cable, 36", Cr/Cr	36	RG-55B/U	No
SPC27031	BNC Female Bulkhead to BNC Female Bulkhead, RG-55B/U Cable, 60", Cr/Cr	60	RG-55B/U	No
SPC27046	BNC FEM BLKHD TO BNC FEM BLKHD; RG-142B/U; 12"; CR/CR	12	RG-142B/U	No
SPC27047	BNC FEM BLKHD TO BNC FEM BLKHD; RG-142B/U; 24"; CR/CR	24	RG-142B/U	No
SPC27048	BNC FEM BLKHD TO BNC FEM BLKHD; RG-142B/U; 36"; CR/CR	36	RG-142B/U	No
SPC27049	BNC FEM BLKHD TO BNC FEM BLKHD; RG-142B/U; 48"; CR/CR	48	RG-142B/U	No
SPC27050	BNC FEM BLKHD TO BNC FEM BLKHD; RG-142B/U; 60"; CR/CR	60	RG-142B/U	No
SPC27051	BNC FEM BLKHD TO BNC FEM BLKHD; RG-142B/U; 72"; CR/CR	72	RG-142B/U	No
SPC27052	BNC FEM BLKHD TO BNC FEM BLKHD; RG-223/U; 12"; CR/CR	21	RG-142B/U	No
SPC27053	BNC FEM BLKHD TO BNC FEM BLKHD; RG-223/U; 24"; CR/CR	24	RG-223/U	No
SPC27054	BNC FEM BLKHD TO BNC FEM BLKHD; RG-223/U; 36"; CR/CR	36	RG-223/U	No
SPC27055	BNC FEM BLKHD TO BNC FEM BLKHD; RG-223/U; 48"; CR/CR	48	RG-223/U	No
SPC27056	BNC FEM BLKHD TO BNC FEM BLKHD; RG-223/U; 60"; CR/CR	60	RG-223/U	No
SPC27057	BNC FEM BLKHD TO BNC FEM BLKHD; RG-223/U; 72"; CR/CR	72	RG-223/U	No
SPC27058	BNC FEM BLKHD TO BNC FEM BLKHD; RG-400/U; 12"; CR/CR	12	RG-400/U	No
SPC27059	BNC FEM BLKHD TO BNC FEM BLKHD; RG-400/U; 24"; CR/CR	24	RG-400/U	No
SPC27060	BNC FEMALE BULKHEAD TO BNC FEMALE BULKHE	36	RG-400/U	No
SPC27061	BNC FEM BLKHD TO BNC FEM BLKHD; RG-400/U; 48"; CR/CR	48	RG-400/U	No
SPC27062	BNC FEM BLKHD TO BNC FEM BLKHD; RG-400/U	60	RG-400/U	No

Disclaimer:

All statements and technical information contained herein are based upon information and/or tests we believe to be accurate and reliable. Since conditions of use are beyond our control, the user shall determine the suitability of the product for the intended use and assume all risk and liability whatsoever in connection therewith.



SPC TECHNOLOGY

Drawing Title:

BNC F CRIMP BULK TO BNC F CRIMP BULK

Size: A

Dwg. No

TA-982

Electronic File
TA-982.dwg

Rev
A

Scale: NTS

U.O.M.: Inches (mm)

Sheet: 1 of 2

Unless otherwise specified, Dimensions are for references purposes only.

Drawn By:

Divya

Date:

20-11-08

Checked By:

Suresh

Date:

20-11-08

Approved By:

Jason Nash

Date:

12/12/08

All rights Reserved . No Portion of this publication, whether in whole or in part can be reproduced without the express written consent of SPC Technology.

Revisions:			DOC. No.		* Effective: 12/21/98		* DCP No. 680	
DCP: #	REV	Description:	Drawn	Date	Checked	Date	Approved	Date
XXX	A	RELEASED	Divya	20-11-08	Suresh	20-11-08	JN	12/12/08



Manufacturer Part Number	Product Description	Length	Cable Type	Strain Relief
SPC27063	BNC FEM BLKHD TO BNC FEM BLKHD; RG-400/U; 72"; CR/CR	72	RG-400/U	No
SPC27064	BNC FEM BLKHD TO BNC FEM BLKHD; LMR-195; 12"; CR/CR	12	LMR-195	No
SPC27065	BNC FEM BLKHD TO BNC FEM BLKHD; LMR-195; 24"; CR/CR	24	LMR-195	No
SPC27066	BNC FEM BLKHD TO BNC FEM BLKHD; LMR-195; 36"; CR/CR	36	LMR-195	No
SPC27067	BNC FEM BLKHD TO BNC FEM BLKHD; LMR-195; 48"; CR/CR	48	LMR-195	No
SPC27068	BNC FEM BLKHD TO BNC FEM BLKHD; LMR-195; 60"; CR/CR	60	LMR-195	No
SPC27069	BNC FEM BLKHD TO BNC FEM BLKHD; LMR-195; 72"; CR/CR	72	LMR-195	No
SPC27073	BNC Female Bulkhead to BNC Female Bulkhead; RG-59B/U Cable, 48", Cr/Cr	48	RG-59B/U	No
SPC27075	BNC Female Bulkhead to BNC Female Bulkhead; RG-59B/U Cable, 60", Cr/Cr	60	RG-59B/U	No
SPC27077	BNC Female Bulkhead to BNC Female Bulkhead; RG-59B/U Cable, 72", Cr/Cr	72	RG-59B/U	No
SPC27081	BNC Female Bulkhead to BNC Female Bulkhead; RG-62A/U Cable, 36", Cr/Cr	36	RG-62A/U	No
SPC27085	BNC Female Bulkhead to BNC Female Bulkhead; RG-62A/U Cable, 72", Cr/Cr	72	RG-62A/U	No
SPC27087	BNC FEM BLKHD TO BNC FEM BLKHD; RG-316/U; 12"; CR/CR	12	RG-316/U	No
SPC27088	BNC FEM BLKHD TO BNC FEM BLKHD; RG-316/U; 24"; CR/CR	24	RG-316/U	No
SPC27089	BNC FEM BLKHD TO BNC FEM BLKHD; RG-316/U; 36"; CR/CR	36	RG-316/U	No
SPC27090	BNC FEM BLKHD TO BNC FEM BLKHD; RG-316/U; 48"; CR/CR	48	RG-316/U	No
SPC27091	BNC FEM BLKHD TO BNC FEM BLKHD; RG-316/U; 60"; CR/CR	60	RG-316/U	No
SPC27092	BNC FEM BLKHD TO BNC FEM BLKHD; RG-316/U; 72"; CR/CR	72	RG-316/U	No
SPC27093	BNC FEM BLKHD TO BNC FEM BLKHD; RG-316/U DS; 12"; CR/CR	12	RG-316/U DS	No
SPC27094	BNC FEM BLKHD TO BNC FEM BLKHD; RG-316/U DS; 24"; CR/CR	24	RG-316/U DS	No
SPC27095	BNC FEM BLKHD TO BNC FEM BLKHD; RG-316/U DS; 36"; CR/CR	36	RG-316/U DS	No
SPC27096	BNC FEM BLKHD TO BNC FEM BLKHD; RG-316/U DS; 48"; CR/CR	48	RG-316/U DS	No
SPC27097	BNC FEM BLKHD TO BNC FEM BLKHD; RG-316/U DS; 60"; CR/CR	60	RG-316/U DS	No
SPC27098	BNC FEM BLKHD TO BNC FEM BLKHD; RG-316/U DS; 72"; CR/CR	72	RG-316/U DS	No
SPC27099	BNC FEM BLKHD TO BNC FEM BLKHD; RG-188A/U; 12"; CR/CR	12	RG-188A/U	No
SPC27100	BNC FEM BLKHD TO BNC FEM BLKHD; RG-188A/U; 24"; CR/CR	24	RG-188A/U	No
SPC27101	BNC FEM BLKHD TO BNC FEM BLKHD; RG-188A/U; 36"; CR/CR	36	RG-188A/U	No
SPC27102	BNC FEM BLKHD TO BNC FEM BLKHD; RG-188A/U; 48"; CR/CR	48	RG-188A/U	No
SPC27103	BNC FEM BLKHD TO BNC FEM BLKHD; RG-188A/U; 60"; CR/CR	60	RG-188A/U	No
SPC27104	BNC FEM BLKHD TO BNC FEM BLKHD; RG-188A/U; 72"; CR/CR	72	RG-188A/U	No
SPC27105	BNC FEM BLKHD TO BNC FEM BLKHD; RG-188A/U DS; 12"; CR/CR	12	RG-188A/U DS	No
SPC27106	BNC FEM BLKHD TO BNC FEM BLKHD; RG-188A/U DS; 24"; CR/CR	24	RG-188A/U DS	No
SPC27107	BNC FEM BLKHD TO BNC FEM BLKHD; RG-188A/U DS; 36"; CR/CR	36	RG-188A/U DS	No
SPC27108	BNC FEM BLKHD TO BNC FEM BLKHD; RG-188A/U DS; 48"; CR/CR	48	RG-188A/U DS	No
SPC27109	BNC FEM BLKHD TO BNC FEM BLKHD; RG-188A/U DS; 60"; CR/CR	60	RG-188A/U DS	No
SPC27110	BNC FEM BLKHD TO BNC FEM BLKHD; RG-188A/U DS; 72"; CR/CR	72	RG-188A/U DS	No
SPC27111	BNC FEM BLKHD TO BNC FEM BLKHD; RG-174A/U; 12"; CR/CR	12	RG-174A/U	No
SPC27112	BNC FEM BLKHD TO BNC FEM BLKHD; RG-174A/U; 24"; CR/CR	24	RG-174A/U	No
SPC27113	BNC FEM BLKHD TO BNC FEM BLKHD; RG-174A/U; 36"; CR/CR	36	RG-174A/U	No
SPC27114	BNC FEM BLKHD TO BNC FEM BLKHD; RG-174A/U; 48"; CR/CR	48	RG-174A/U	No
SPC27115	BNC FEM BLKHD TO BNC FEM BLKHD; RG-174A/U; 60"; CR/CR	60	RG-174A/U	No
SPC27116	BNC FEM BLKHD TO BNC FEM BLKHD; RG-174A/U; 72"; CR/CR	72	RG-174A/U	No
SPC27117	BNC FEM BLKHD TO BNC FEM BLKHD; LMR-100; 12"; CR/CR	12	LMR-100	No
SPC27118	BNC FEM BLKHD TO BNC FEM BLKHD; LMR-100; 24"; CR/CR	24	LMR-100	No
SPC27119	BNC FEM BLKHD TO BNC FEM BLKHD; LMR-100; 36"; CR/CR	36	LMR-100	No
SPC27120	BNC FEM BLKHD TO BNC FEM BLKHD; LMR-100; 48"; CR/CR	48	LMR-100	No
SPC27121	BNC FEM BLKHD TO BNC FEM BLKHD; LMR-100; 60"; CR/CR	60	LMR-100	No
SPC27122	BNC FEM BLKHD TO BNC FEM BLKHD; LMR-100; 72"; CR/CR	72	LMR-100	No

Disclaimer:

All statements and technical information contained herein are based upon information and/or tests we believe to be accurate and reliable. Since conditions of use are beyond our control, the user shall determine the suitability of the product for the intended use and assume all risk and liability whatsoever in connection therewith.



SPC TECHNOLOGY

Drawing Title:

BNC MALE CRIMP TO BNC FEMALE CRIMP

Size: A

Dwg. No

TA-982

Electronic File

TA-982.dwg

Rev A

Scale: NTS

U.O.M.: Inches (mm)

Sheet: 2 of 2

Unless otherwise specified, Dimensions are for references purposes only.

Drawn By:

Divya

Date:

20-11-08

Checked By:

Suresh

Date:

20-11-08

Approved By:

Jason Nash

Date:

12/12/08