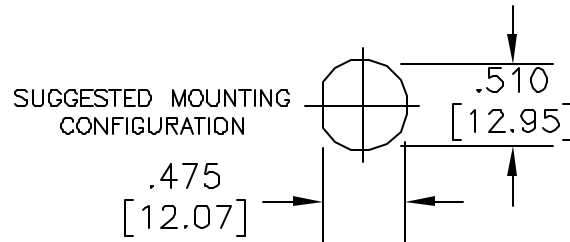
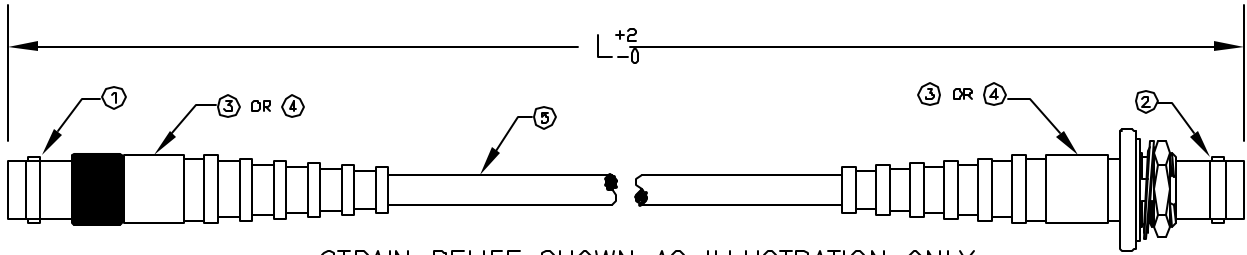


All rights Reserved . No Portion of this publication, whether in whole or in part can be reproduced without the express written consent of SPC Technology.

Revisions:			DOC. No.		* Effective: 12/21/98		* DCP No. 680	
DCP: #	REV	Description:	Drawn	Date	Checked	Date	Approved	Date
XXX	A	RELEASED	Chetan	20-11-08	Suresh	20-11-08	JN	12/12/08



ITEM	DESCRIPTION	MATERIAL	FINISH
5	CABLE	-	-
4	TUBING	**HEAT SHRINK	BLACK
3	STRAIN RELIEF	POLYVINYL CHLORIDE	BLACK
2	BNC F CRIMP BULK	BRASS	NICKEL
1	BNC FEMALE CRIMP	BRASS	NICKEL

**DUAL WALL POLYOLEFIN

Manufacturer Part Number	Product Description	Length	Cable Type	Strain Relief
SPC26988	BNC FEM TO BNC FEM BLKHD; RG-142B/U; 12"; CR/CR	12	RG-142B/U	No
SPC26989	BNC FEM TO BNC FEM BLKHD; RG-142B/U; 24"; CR/CR	24	RG-142B/U	No
SPC26990	BNC FEM TO BNC FEM BLKHD; RG-142B/U; 36"; CR/CR	36	RG-142B/U	No
SPC26991	BNC FEM TO BNC FEM BLKHD; RG-142B/U; 48"; CR/CR	48	RG-142B/U	No
SPC26992	BNC FEM TO BNC FEM BLKHD; RG-142B/U; 60"; CR/CR	60	RG-142B/U	No
SPC26993	BNC FEM TO BNC FEM BLKHD; RG-142B/U; 72"; CR/CR	72	RG-142B/U	No
SPC26994	BNC FEM TO BNC FEM BLKHD; RG-223/U; 12"; CR/CR	12	RG-223/U	No
SPC26995	BNC FEMALE TO BNC FEMALE BULKHEAD; RG-22	24	RG-223/U	No
SPC26996	BNC FEM TO BNC FEM BLKHD; RG-223/U; 36"; CR/CR	36	RG-223/U	No
SPC26997	BNC FEM TO BNC FEM BLKHD; RG-223/U; 48"; CR/CR	48	RG-223/U	No
SPC26998	BNC FEM TO BNC FEM BLKHD; RG-223/U; 60"; CR/CR	60	RG-223/U	No
SPC26999	BNC FEM TO BNC FEM BLKHD; RG-223/U; 72"; CR/CR	72	RG-223/U	No
SPC27000	BNC FEM TO BNC FEM BLKHD; RG-400/U; 12"; CR/CR	12	RG-400/U	No
SPC27001	BNC FEM TO BNC FEM BLKHD; RG-400/U; 24"; CR/CR	24	RG-400/U	No
SPC27002	BNC FEM TO BNC FEM BLKHD; RG-400/U; 36"; CR/CR	36	RG-400/U	No
SPC27003	BNC FEM TO BNC FEM BLKHD; RG-400/U; 48"; CR/CR	48	RG-400/U	No
SPC27004	BNC FEM TO BNC FEM BLKHD; RG-400/U; 60"; CR/CR	60	RG-400/U	No
SPC27005	BNC FEM TO BNC FEM BLKHD; RG-400/U; 72"; CR/CR	72	RG-400/U	No
SPC27006	BNC FEM TO BNC FEM BLKHD; LMR-195; 12"; CR/CR	12	LMR-195	No
SPC27007	BNC FEM TO BNC FEM BLKHD; LMR-195; 24"; CR/CR	24	LMR-195	No
SPC27008	BNC FEM TO BNC FEM BLKHD; LMR-195; 36"; CR/CR	36	LMR-195	No
SPC27009	BNC FEM TO BNC FEM BLKHD; LMR-195; 48"; CR/CR	48	LMR-195	No
SPC27010	BNC FEM TO BNC FEM BLKHD; LMR-195; 60"; CR/CR	60	LMR-195	No
SPC27011	BNC FEM TO BNC FEM BLKHD; LMR-195; 72"; CR/CR	72	LMR-195	No
SPC27022	BNC Female to BNC Female Bulkhead, RG-62A/U Cable, 60 inch Length, Cr/Cr	60	RG-62A/U	No

Disclaimer:

All statements and technical information contained herein are based upon information and/or tests we believe to be accurate and reliable. Since conditions of use are beyond our control, the user shall determine the suitability of the product for the intended use and assume all risk and liability whatsoever in connection therewith.



SPC TECHNOLOGY

Drawing Title:

BNC FEMALE CRIMP TO BNC FEMALE CRIMP BULK

Size: A	Dwg. No: TA-981	Electronic File: TA-981.dwg	Rev: A
---------	-----------------	-----------------------------	--------

Scale: NTS	U.O.M.: Inches (mm)	Sheet: 1 of 1
------------	---------------------	---------------

Unless otherwise specified, Dimensions are for references purposes only.

Drawn By: Chetan	Date: 20-11-08
Checked By: Suresh	Date: 20-11-08
Approved By: Jason Nash	Date: 12/12/08