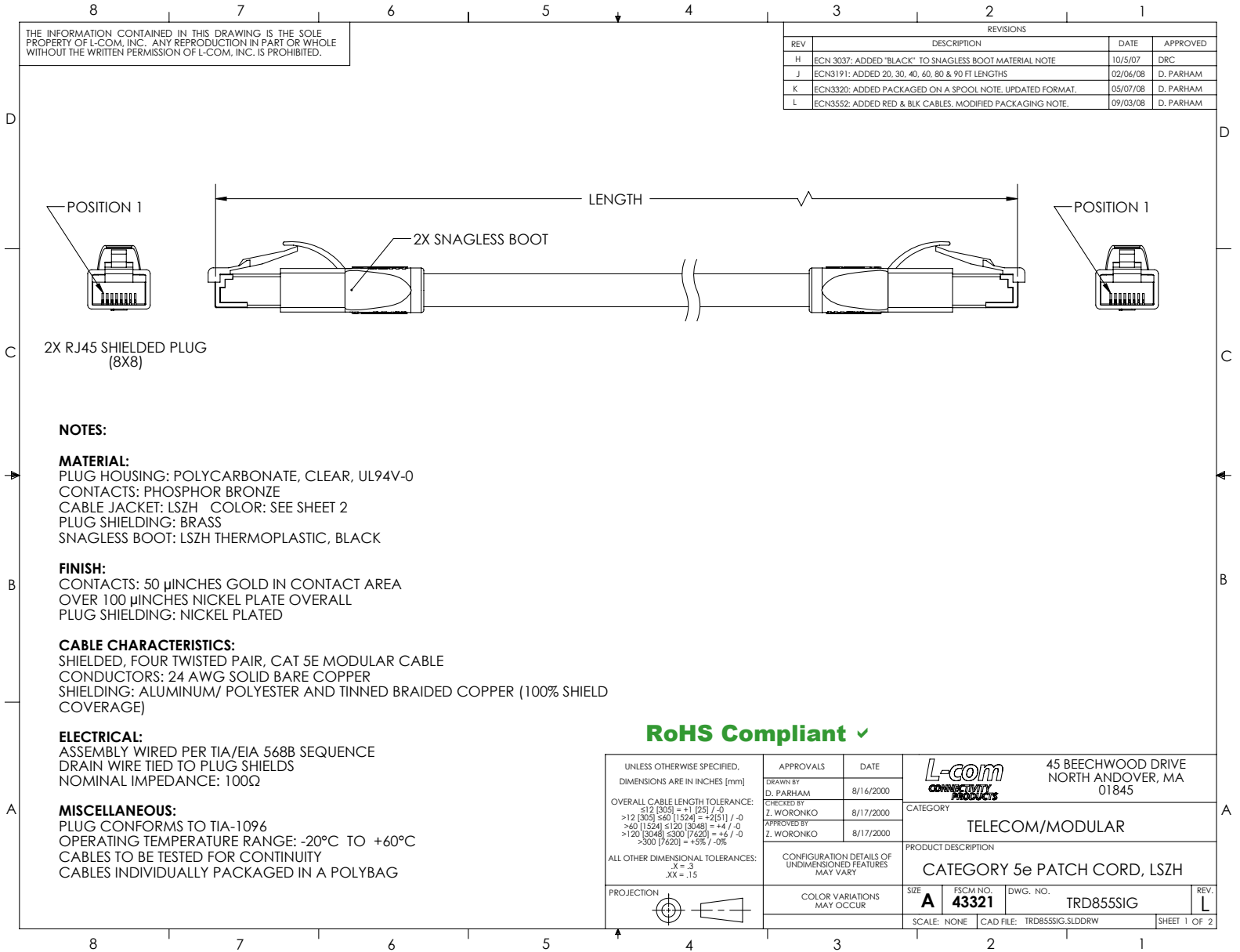


THE INFORMATION CONTAINED IN THIS DRAWING IS THE SOLE PROPERTY OF L-COM, INC. ANY REPRODUCTION IN PART OR WHOLE WITHOUT THE WRITTEN PERMISSION OF L-COM, INC. IS PROHIBITED.

REVISIONS			
REV	DESCRIPTION	DATE	APPROVED
H	ECN 3037: ADDED "BLACK" TO SNAGLESS BOOT MATERIAL NOTE	10/5/07	DRC
J	ECN3191: ADDED 20, 30, 40, 60, 80 & 90 FT LENGTHS	02/06/08	D. PARHAM
K	ECN3320: ADDED PACKAGED ON A SPOOL NOTE. UPDATED FORMAT.	05/07/08	D. PARHAM
L	ECN3552: ADDED RED & BLK CABLES. MODIFIED PACKAGING NOTE.	09/03/08	D. PARHAM



NOTES:

MATERIAL:

PLUG HOUSING: POLYCARBONATE, CLEAR, UL94V-0
 CONTACTS: PHOSPHOR BRONZE
 CABLE JACKET: LSZH COLOR: SEE SHEET 2
 PLUG SHIELDING: BRASS
 SNAGLESS BOOT: LSZH THERMOPLASTIC, BLACK

FINISH:

CONTACTS: 50 μINCHES GOLD IN CONTACT AREA
 OVER 100 μINCHES NICKEL PLATE OVERALL
 PLUG SHIELDING: NICKEL PLATED

CABLE CHARACTERISTICS:

SHIELDED, FOUR TWISTED PAIR, CAT 5E MODULAR CABLE
 CONDUCTORS: 24 AWG SOLID BARE COPPER
 SHIELDING: ALUMINUM/ POLYESTER AND TINNED BRAIDED COPPER (100% SHIELD COVERAGE)


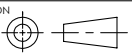
ELECTRICAL:

ASSEMBLY WIRED PER TIA/EIA 568B SEQUENCE
 DRAIN WIRE TIED TO PLUG SHIELDS
 NOMINAL IMPEDANCE: 100Ω

MISCELLANEOUS:

PLUG CONFORMS TO TIA-1096
 OPERATING TEMPERATURE RANGE: -20°C TO +60°C
 CABLES TO BE TESTED FOR CONTINUITY
 CABLES INDIVIDUALLY PACKAGED IN A POLYBAG


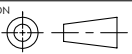
RoHS Compliant ✓

UNLESS OTHERWISE SPECIFIED, DIMENSIONS ARE IN INCHES [mm]	APPROVALS	DATE	 45 BEECHWOOD DRIVE NORTH ANDOVER, MA 01845
	DRAWN BY D. PARHAM	8/16/2000	
OVERALL CABLE LENGTH TOLERANCE: ≤ 12 [305] $\leq +1$ [25] / -0 > 12 [305] ≤ 60 [1524] ≤ -2 [51] / -0 > 60 [1524] ≤ 120 [3048] $\leq +4$ / -0 > 120 [3048] ≤ 300 [7620] $\leq +6$ / -0 > 300 [7620] $\leq +3\%$ / -0%	CHECKED BY Z. WORONKO	8/17/2000	CATEGORY TELECOM/MODULAR
	APPROVED BY Z. WORONKO	8/17/2000	PRODUCT DESCRIPTION CATEGORY 5e PATCH CORD, LSZH
ALL OTHER DIMENSIONAL TOLERANCES: X = .3 XX = .15	PROJECTION		CONFIGURATION DETAILS OF UNDIMENSIONED FEATURES MAY VARY COLOR VARIATIONS MAY OCCUR SIZE A FSCM NO. 43321 DWG. NO. TRD855SIG SCALE: NONE CAD FILE: TRD855SIG.SLDDRW
			REV. L SHEET 1 OF 2

THE INFORMATION CONTAINED IN THIS DRAWING IS THE SOLE PROPERTY OF L-COM, INC. ANY REPRODUCTION IN PART OR WHOLE WITHOUT THE WRITTEN PERMISSION OF L-COM, INC. IS PROHIBITED.

REVISIONS			
REV	DESCRIPTION	DATE	APPROVED
H	ECN 3037: ADDED "BLACK" TO SNAGLESS BOOT MATERIAL NOTE	10/5/07	DRC
J	ECN3191: ADDED 20, 30, 40, 60, 80 & 90 FT LENGTHS	02/06/08	D. PARHAM
K	ECN3320: ADDED PACKAGED ON A SPOOL NOTE, UPDATED FORMAT.	05/07/08	D. PARHAM
L	ECN3552: ADDED RED & BLK CABLES, MODIFIED PACKAGING NOTE.	09/03/08	D. PARHAM

PART NUMBER	JACKET COLOR	LENGTH		PART NUMBER	JACKET COLOR	LENGTH		PART NUMBER	JACKET COLOR	LENGTH	
		FEET	METERS			FEET	METERS			FEET	METERS
TRD855SIG-1	GRAY	1.0	0.31	TRD855SIGBLK-1	BLACK	1.0	0.31	TRD855SIGRD-1	RED	1.0	0.31
TRD855SIG-2	GRAY	2.0	0.61	TRD855SIGBLK-2	BLACK	2.0	0.61	TRD855SIGRD-2	RED	2.0	0.61
TRD855SIG-3	GRAY	3.0	0.91	TRD855SIGBLK-3	BLACK	3.0	0.91	TRD855SIGRD-3	RED	3.0	0.91
TRD855SIG-5	GRAY	5.0	1.52	TRD855SIGBLK-5	BLACK	5.0	1.52	TRD855SIGRD-5	RED	5.0	1.52
TRD855SIG-7	GRAY	7.0	2.13	TRD855SIGBLK-7	BLACK	7.0	2.13	TRD855SIGRD-7	RED	7.0	2.13
TRD855SIG-10	GRAY	10.0	3.05	TRD855SIGBLK-10	BLACK	10.0	3.05	TRD855SIGRD-10	RED	10.0	3.05
TRD855SIG-15	GRAY	15.0	4.57	TRD855SIGBLK-15	BLACK	15.0	4.57	TRD855SIGRD-15	RED	15.0	4.57
TRD855SIG-20	GRAY	20.0	6.10	TRD855SIGBLK-20	BLACK	20.0	6.10	TRD855SIGRD-20	RED	20.0	6.10
TRD855SIG-25	GRAY	25.0	7.62	TRD855SIGBLK-25	BLACK	25.0	7.62	TRD855SIGRD-25	RED	25.0	7.62
TRD855SIG-30	GRAY	30.0	9.14	TRD855SIGBLK-30	BLACK	30.0	9.14	TRD855SIGRD-30	RED	30.0	9.14
TRD855SIG-40	GRAY	40.0	12.19	TRD855SIGBLK-40	BLACK	40.0	12.19	TRD855SIGRD-40	RED	40.0	12.19
TRD855SIG-50	GRAY	50.0	15.24	TRD855SIGBLK-50	BLACK	50.0	15.24	TRD855SIGRD-50	RED	50.0	15.24
TRD855SIG-60	GRAY	60.0	18.29	TRD855SIGBLK-60	BLACK	60.0	18.29	TRD855SIGRD-60	RED	60.0	18.29
TRD855SIG-75	GRAY	75.0	22.86	TRD855SIGBLK-75	BLACK	75.0	22.86	TRD855SIGRD-75	RED	75.0	22.86
TRD855SIG-80	GRAY	80.0	24.38	TRD855SIGBLK-80	BLACK	80.0	24.38	TRD855SIGRD-80	RED	80.0	24.38
TRD855SIG-90	GRAY	90.0	27.43	TRD855SIGBLK-90	BLACK	90.0	27.43	TRD855SIGRD-90	RED	90.0	27.43
TRD855SIG-100	GRAY	100.0	30.48	TRD855SIGBLK-100	BLACK	100.0	30.48	TRD855SIGRD-100	RED	100.0	30.48
TRD855SIG-150	GRAY	150.0	45.72	TRD855SIGBLK-150	BLACK	150.0	45.72	TRD855SIGRD-150	RED	150.0	45.72
TRD855SIG-200	GRAY	200.0	60.96	TRD855SIGBLK-200	BLACK	200.0	60.96	TRD855SIGRD-200	RED	200.0	60.96
TRD855SIG-250	GRAY	250.0	76.20	TRD855SIGBLK-250	BLACK	250.0	76.20	TRD855SIGRD-250	RED	250.0	76.20
TRD855SIG-300	GRAY	300.0	91.44	TRD855SIGBLK-300	BLACK	300.0	91.44	TRD855SIGRD-300	RED	300.0	91.44

UNLESS OTHERWISE SPECIFIED, DIMENSIONS ARE IN INCHES [mm] OVERALL CABLE LENGTH TOLERANCE: ≤ 12 [305] ≤ 60 [1524] = +1 [25] / -0 > 12 [305] ≤ 60 [1524] = +2 [51] / -0 > 60 [1524] ≤ 120 [3048] = +4 [102] / -0 > 120 [3048] ≤ 300 [7620] = +6 [152] / -0 > 300 [7620] = +3% / -0% ALL OTHER DIMENSIONAL TOLERANCES: X = .3 XX = .15	APPROVALS	DATE	 45 BEECHWOOD DRIVE NORTH ANDOVER, MA 01845
	DRAWN BY D. PARHAM	8/16/2000	
	CHECKED BY Z. WORONKO	8/17/2000	PRODUCT DESCRIPTION CATEGORY 5e PATCH CORD, LSZH
	APPROVED BY Z. WORONKO	8/17/2000	
PROJECTION 	COLOR VARIATIONS MAY OCCUR	SIZE A FSCM NO. 43321 DWG. NO. TRD855SIG	REV. L
SCALE: NONE		CAD FILE: TRD855SIG.SLDDRW	SHEET 2 OF 2