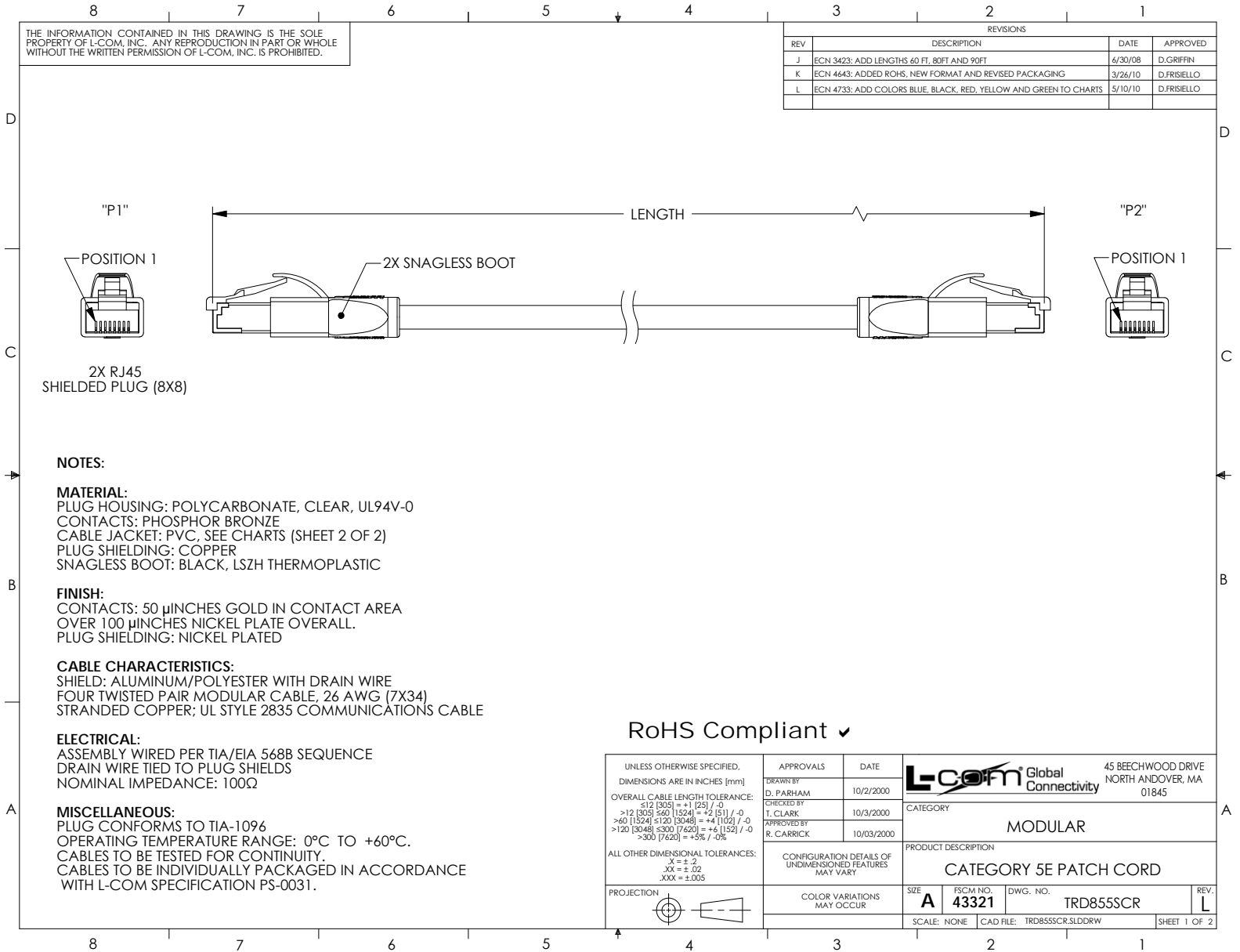


THE INFORMATION CONTAINED IN THIS DRAWING IS THE SOLE PROPERTY OF L-COM, INC. ANY REPRODUCTION IN PART OR WHOLE WITHOUT THE WRITTEN PERMISSION OF L-COM, INC. IS PROHIBITED.

REVISIONS			
REV	DESCRIPTION	DATE	APPROVED
J	ECN 3423: ADD LENGTHS 60 FT, 80FT AND 90FT	6/30/08	D.GRIFFIN
K	ECN 4643: ADDED ROHS, NEW FORMAT AND REVISED PACKAGING	3/26/10	D.FRISIELLO
L	ECN 4733: ADD COLORS BLUE, BLACK, RED, YELLOW AND GREEN TO CHARTS	5/10/10	D.FRISIELLO



NOTES:

MATERIAL:
 PLUG HOUSING: POLYCARBONATE, CLEAR, UL94V-0
 CONTACTS: PHOSPHOR BRONZE
 CABLE JACKET: PVC, SEE CHARTS (SHEET 2 OF 2)
 PLUG SHIELDING: COPPER
 SNAGLESS BOOT: BLACK, LSZH THERMOPLASTIC

FINISH:
 CONTACTS: 50 μINCHES GOLD IN CONTACT AREA
 OVER 100 μINCHES NICKEL PLATE OVERALL.
 PLUG SHIELDING: NICKEL PLATED

CABLE CHARACTERISTICS:
 SHIELD: ALUMINUM/POLYESTER WITH DRAIN WIRE
 FOUR TWISTED PAIR MODULAR CABLE, 26 AWG (7X34)
 STRANDED COPPER; UL STYLE 2835 COMMUNICATIONS CABLE

ELECTRICAL:
 ASSEMBLY WIRED PER TIA/EIA 568B SEQUENCE
 DRAIN WIRE TIED TO PLUG SHIELDS
 NOMINAL IMPEDANCE: 100Ω

MISCELLANEOUS:
 PLUG CONFORMS TO TIA-1096
 OPERATING TEMPERATURE RANGE: 0°C TO +60°C.
 CABLES TO BE TESTED FOR CONTINUITY.
 CABLES TO BE INDIVIDUALLY PACKAGED IN ACCORDANCE WITH L-COM SPECIFICATION PS-0031.

RoHS Compliant ✓

UNLESS OTHERWISE SPECIFIED, DIMENSIONS ARE IN INCHES [mm]	APPROVALS	DATE	 45 BEECHWOOD DRIVE NORTH ANDOVER, MA 01845
OVERALL CABLE LENGTH TOLERANCE: ≤12 [305] = +1 [25] / -0 >12 [305] ≤60 [1524] = +2 [51] / -0 >60 [1524] ≤120 [3048] = +4 [102] / -0 >120 [3048] ≤300 [7620] = +6 [152] / -0 >300 [7620] = +5% / -0%	DRAWN BY D. PARHAM	10/2/2000	
ALL OTHER DIMENSIONAL TOLERANCES: .X = ±.2 .XX = ±.02 .XXX = ±.005	CHECKED BY T. CLARK	10/3/2000	
PROJECTION	APPROVED BY R. CARRICK	10/03/2000	CATEGORY MODULAR
	CONFIGURATION DETAILS OF UNDIMENSIONED FEATURES MAY VARY	PRODUCT DESCRIPTION CATEGORY 5E PATCH CORD	SIZE A FSCM NO. 43321 DWG. NO. TRD855SCR
	COLOR VARIATIONS MAY OCCUR		SCALE: NONE CAD FILE: TRD855SCR.SLDDRW SHEET 1 OF 2

THE INFORMATION CONTAINED IN THIS DRAWING IS THE SOLE PROPERTY OF L-COM, INC. ANY REPRODUCTION IN PART OR WHOLE WITHOUT THE WRITTEN PERMISSION OF L-COM, INC. IS PROHIBITED.

PART NUMBER	LENGTH		COLOR
	FEET	METERS	
TRD855SCR-1	1.0	.31	GRAY
TRD855SCR-2	2.0	.61	GRAY
TRD855SCR-3	3.0	.91	GRAY
TRD855SCR-5	5.0	1.52	GRAY
TRD855SCR-7	7.0	2.13	GRAY
TRD855SCR-10	10.0	3.05	GRAY
TRD855SCR-15	15.0	4.57	GRAY
TRD855SCR-20	20.0	6.10	GRAY
TRD855SCR-25	25.0	7.62	GRAY
TRD855SCR-30	30.0	9.14	GRAY
TRD855SCR-40	40.0	12.19	GRAY
TRD855SCR-50	50.0	15.24	GRAY
TRD855SCR-60	60.0	18.29	GRAY
TRD855SCR-75	75.0	22.86	GRAY
TRD855SCR-80	80.0	24.38	GRAY
TRD855SCR-90	90.0	27.43	GRAY
TRD855SCR-100	100.0	30.48	GRAY

TRD855SCRBL-1	1.0	.31	BLUE
TRD855SCRBL-2	2.0	.61	BLUE
TRD855SCRBL-3	3.0	.91	BLUE
TRD855SCRBL-5	5.0	1.52	BLUE
TRD855SCRBL-7	7.0	2.13	BLUE
TRD855SCRBL-10	10.0	3.05	BLUE
TRD855SCRBL-15	15.0	4.57	BLUE
TRD855SCRBL-20	20.0	6.10	BLUE
TRD855SCRBL-25	25.0	7.62	BLUE
TRD855SCRBL-30	30.0	9.14	BLUE
TRD855SCRBL-40	40.0	12.19	BLUE
TRD855SCRBL-50	50.0	15.24	BLUE
TRD855SCRBL-60	60.0	18.29	BLUE
TRD855SCRBL-75	75.0	22.86	BLUE
TRD855SCRBL-80	80.0	24.38	BLUE
TRD855SCRBL-90	90.0	27.43	BLUE
TRD855SCRBL-100	100.0	30.48	BLUE

PART NUMBER	LENGTH		COLOR
	FEET	METERS	
TRD855SCRGR-1	1.0	.31	GREEN
TRD855SCRGR-2	2.0	.61	GREEN
TRD855SCRGR-3	3.0	.91	GREEN
TRD855SCRGR-5	5.0	1.52	GREEN
TRD855SCRGR-7	7.0	2.13	GREEN
TRD855SCRGR-10	10.0	3.05	GREEN
TRD855SCRGR-15	15.0	4.57	GREEN
TRD855SCRGR-20	20.0	6.10	GREEN
TRD855SCRGR-25	25.0	7.62	GREEN
TRD855SCRGR-30	30.0	9.14	GREEN
TRD855SCRGR-40	40.0	12.19	GREEN
TRD855SCRGR-50	50.0	15.24	GREEN
TRD855SCRGR-60	60.0	18.29	GREEN
TRD855SCRGR-75	75.0	22.86	GREEN
TRD855SCRGR-80	80.0	24.38	GREEN
TRD855SCRGR-90	90.0	27.43	GREEN
TRD855SCRGR-100	100.0	30.48	GREEN

TRD855SCRBLK-1	1.0	.31	BLACK
TRD855SCRBLK-2	2.0	.61	BLACK
TRD855SCRBLK-3	3.0	.91	BLACK
TRD855SCRBLK-5	5.0	1.52	BLACK
TRD855SCRBLK-7	7.0	2.13	BLACK
TRD855SCRBLK-10	10.0	3.05	BLACK
TRD855SCRBLK-15	15.0	4.57	BLACK
TRD855SCRBLK-20	20.0	6.10	BLACK
TRD855SCRBLK-25	25.0	7.62	BLACK
TRD855SCRBLK-30	30.0	9.14	BLACK
TRD855SCRBLK-40	40.0	12.19	BLACK
TRD855SCRBLK-50	50.0	15.24	BLACK
TRD855SCRBLK-60	60.0	18.29	BLACK
TRD855SCRBLK-75	75.0	22.86	BLACK
TRD855SCRBLK-80	80.0	24.38	BLACK
TRD855SCRBLK-90	90.0	27.43	BLACK
TRD855SCRBLK-100	100.0	30.48	BLACK

PART NUMBER	LENGTH		COLOR
	FEET	METERS	
TRD855SCRRD-1	1.0	.31	RED
TRD855SCRRD-2	2.0	.61	RED
TRD855SCRRD-3	3.0	.91	RED
TRD855SCRRD-5	5.0	1.52	RED
TRD855SCRRD-7	7.0	2.13	RED
TRD855SCRRD-10	10.0	3.05	RED
TRD855SCRRD-15	15.0	4.57	RED
TRD855SCRRD-20	20.0	6.10	RED
TRD855SCRRD-25	25.0	7.62	RED
TRD855SCRRD-30	30.0	9.14	RED
TRD855SCRRD-40	40.0	12.19	RED
TRD855SCRRD-50	50.0	15.24	RED
TRD855SCRRD-60	60.0	18.29	RED
TRD855SCRRD-75	75.0	22.86	RED
TRD855SCRRD-80	80.0	24.38	RED
TRD855SCRRD-90	90.0	27.43	RED
TRD855SCRRD-100	100.0	30.48	RED

TRD855SCRY-1	1.0	.31	YELLOW
TRD855SCRY-2	2.0	.61	YELLOW
TRD855SCRY-3	3.0	.91	YELLOW
TRD855SCRY-5	5.0	1.52	YELLOW
TRD855SCRY-7	7.0	2.13	YELLOW
TRD855SCRY-10	10.0	3.05	YELLOW
TRD855SCRY-15	15.0	4.57	YELLOW
TRD855SCRY-20	20.0	6.10	YELLOW
TRD855SCRY-25	25.0	7.62	YELLOW
TRD855SCRY-30	30.0	9.14	YELLOW
TRD855SCRY-40	40.0	12.19	YELLOW
TRD855SCRY-50	50.0	15.24	YELLOW
TRD855SCRY-60	60.0	18.29	YELLOW
TRD855SCRY-75	75.0	22.86	YELLOW
TRD855SCRY-80	80.0	24.38	YELLOW
TRD855SCRY-90	90.0	27.43	YELLOW
TRD855SCRY-100	100.0	30.48	YELLOW

L-com Global Connectivity		45 BEECHWOOD DRIVE NORTH ANDOVER, MA 01845	
CATEGORY		MODULAR	
PRODUCT DESCRIPTION			
CATEGORY 5E PATCH CORD			
SIZE	FSCM NO.	DWG. NO.	REV.
A	43321	TRD855SCR	L
SCALE: NONE		CAD FILE: TRD855SCR.SLDDRW	
			SHEET 2 OF 2