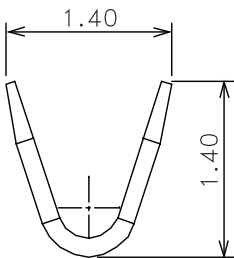
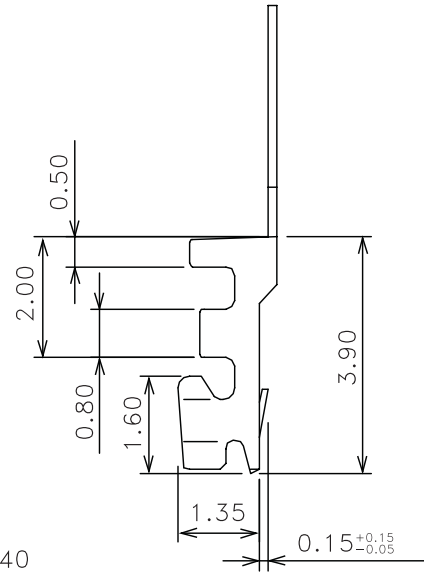
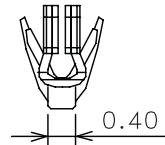
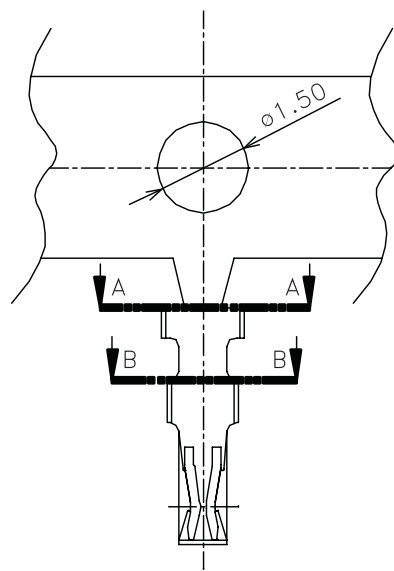


SECTION B-B



SECTION A-A



NOTE:

1. MATERIAL: HIGH PERFORMANCE COPPER ALLOY, T=0.10mm
2. PLATING: TIN OVERALL
3. WIRE RANGE SUITABLE FOR AWG#28~#32
4. STANDARD PACKAGE: 15000 PCS/ROLL

1	220202	-
ISS.	DATE	C/N
APPROVED: TED T		
CHECKED: MIKE M		
DRAWN:		
CUSTOMER REF:		
ASSEMBLY DRG:		

ORDER CODE  
M40-1000006



HARWIN INC U.S.A. TEL: (812)542 2546 FAX: (812)542 2541	HARWIN PLC U.K. TEL: 023 9237 0451 FAX: 023 9231 4590	HARWIN PTE LTD SINGAPORE TEL: 65 6779 4909 FAX: 65 6779 3868
--	--	---

THIS INFORMATION AND ANY INFORMATION OR DESCRIPTIVE MATTER SET OUT HEREON ARE CONFIDENTIAL AND COPYRIGHT PROPERTY OF THE HARWIN GROUP AND MUST NOT BE DISCLOSED, LOANED, COPIED OR USED FOR MANUFACTURING, TENDERING OR FOR ANY OTHER PURPOSE WITHOUT THEIR WRITTEN PERMISSION.

TOLERANCES  
X = ±1mm  
XX = ±0.25mm  
XXX = ±0.10mm  
XXXX = ±0.01mm  
ANGLES = °  
UNLESS STATED

MATERIAL:  
SEE ABOVE  
FINISH: SEE ABOVE  
S/AREA: mm<sup>2</sup>

TITLE:  
TERMINAL FOR CABLE TO BOARD P=1.00mm TYPE  
DRAWING NUMBER:  
M40-1000006  
SHT 1 OF 1