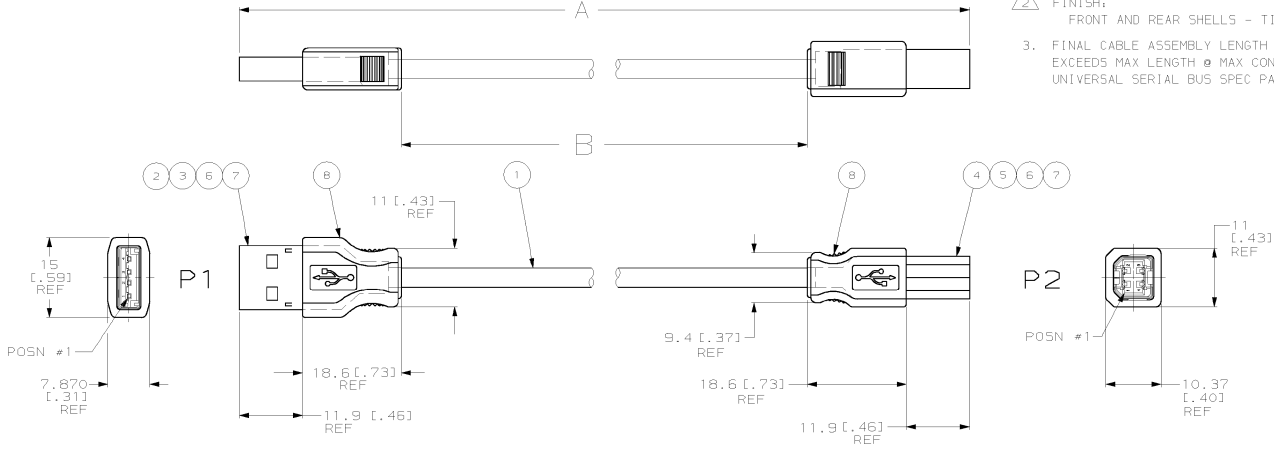


WIRING DIAGRAM			
P1	WIRE COLOR	P2	AWG
1	RED	1	28
2	WHITE	2	28
3	GREEN	3	28
4	BLACK	4	28
SHELL	SHIELD	SHELL	-

REV	DESCRIPTION	DATE	BY	APP
0	REL PER PR 98-7922-020	7/21/98	DGG	KB
A	REV PER 0820-0437-99	4/14/99	DGG	DK
B	REV PER 0820-0519-99	4/26/99	JCB	LH
C	REV PER 0820-0515-99	4/26/99	JCB	LH

- 1 MATERIAL:  
FRONT AND REAR SHELLS- STEEL.  
HOUSING- UL 94V-0 RATED THERMOPLASTIC, BLACK.  
OVERMOLD - PVC, COLOR: FROST WHITE.
- 2 FINISH:  
FRONT AND REAR SHELLS - TIN PLATED.
- 3. FINAL CABLE ASSEMBLY LENGTH LONGER THAN 830mm  
EXCEEDS MAX LENGTH @ MAX CONDITIONS PER  
UNIVERSAL SERIAL BUS SPEC PARAGRAPH 6.4.



974325-4	-	250±12	9.84±.47
974325-3	-	100±12	3.93±.47
974325-2	250 <sup>+0</sup> <sub>-25</sub>	9.84 <sup>+0.00</sup> <sub>-0.98</sub>	-
974325-1	500 <sup>+0</sup> <sub>-25</sub>	19.68 <sup>+0.00</sup> <sub>-0.98</sub>	-
PART NUMBER	A	B	

AR	AR	AR	AR	GR	OVERMOLD, PVC, WHITE	8
AR	AR	AR	AR	GR	FLUX, KESTER 951	7
AR	AR	AR	AR	GR	SOLDER, FLUX CORE	6
1	1	1	1	PC	PLUG SHELL, USB, TYPE B	5
1	1	1	1	PC	HOUSING, PLUG, TYPE B, USB	4
1	1	1	1	PC	PLUG SHELL, USB, TYPE A	3
1	1	1	1	PC	HOUSING, PLUG, TYPE A, USB	2
AR	AR	AR	AR	mm	CABLE	1
-4	-3	-2	-1	U/M	DESCRIPTION	ITEM NO.

THIS DRAWING IS A CONTROLLED DOCUMENT. DATE: 9-12-99. BY: [Signature].

AMP Incorporated, Harrisburg, PA 17105-3608

USB CONSORTIUM, 4 POS, PLUG, TYPE A TO TYPE B, 28/28 AWG

Part Number: 974325

Customer Drawing

Lead Free Conversion in Process - Refer to Specification 230-700 at [www.tycoelectronics.com/leadfree](http://www.tycoelectronics.com/leadfree)