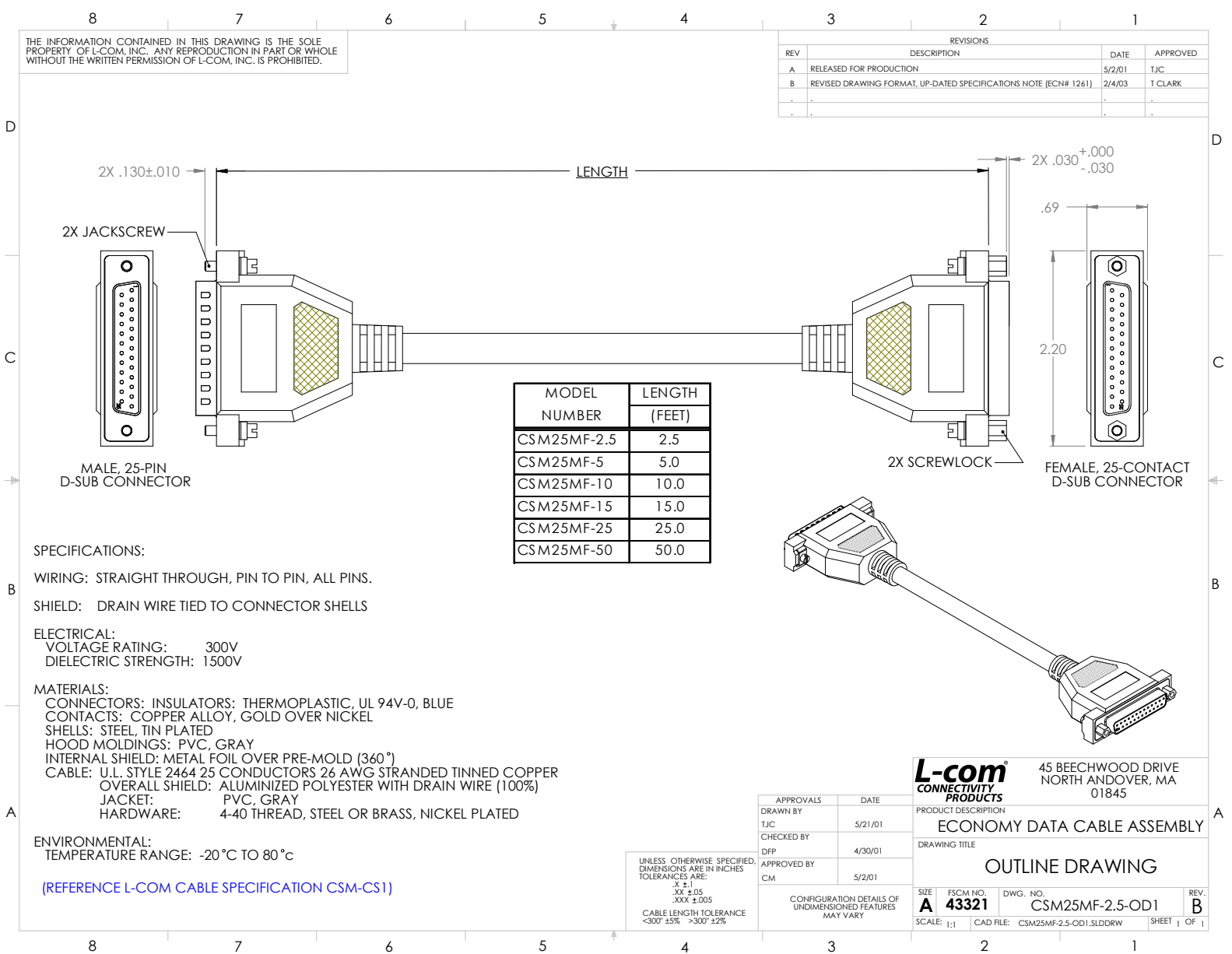


THE INFORMATION CONTAINED IN THIS DRAWING IS THE SOLE PROPERTY OF L-COM, INC. ANY REPRODUCTION IN PART OR WHOLE WITHOUT THE WRITTEN PERMISSION OF L-COM, INC. IS PROHIBITED.

REVISIONS			
REV	DESCRIPTION	DATE	APPROVED
A	RELEASED FOR PRODUCTION	5/2/01	TJC
B	REVISED DRAWING FORMAT, UP-DATED SPECIFICATIONS NOTE (ECN# 1261)	2/4/03	T CLARK



SPECIFICATIONS:

WIRING: STRAIGHT THROUGH, PIN TO PIN, ALL PINS.

SHIELD: DRAIN WIRE TIED TO CONNECTOR SHELLS

ELECTRICAL:
 VOLTAGE RATING: 300V
 DIELECTRIC STRENGTH: 1500V

MATERIALS:
 CONNECTORS: INSULATORS: THERMOPLASTIC, UL 94V-0, BLUE
 CONTACTS: COPPER ALLOY, GOLD OVER NICKEL
 SHELLS: STEEL, TIN PLATED
 HOOD MOLDINGS: PVC, GRAY
 INTERNAL SHIELD: METAL FOIL OVER PRE-MOLD (360°)
 CABLE: U.L. STYLE 2464 25 CONDUCTORS 26 AWG STRANDED TINNED COPPER
 OVERALL SHIELD: ALUMINIZED POLYESTER WITH DRAIN WIRE (100%)
 JACKET: PVC, GRAY
 HARDWARE: 4-40 THREAD, STEEL OR BRASS, NICKEL PLATED

ENVIRONMENTAL:
 TEMPERATURE RANGE: -20°C TO 80°C

(REFERENCE L-COM CABLE SPECIFICATION CSM-CS1)

UNLESS OTHERWISE SPECIFIED,
 DIMENSIONS ARE IN INCHES
 TOLERANCES ARE:
 .XX ±.1
 .XX ±.05
 .XXX ±.005
 CABLE LENGTH TOLERANCE
 <300' ±5% >300' ±2%

APPROVALS	DATE	PRODUCT DESCRIPTION	
DRAWN BY TJC	5/21/01	ECONOMY DATA CABLE ASSEMBLY	
CHECKED BY DFP	4/30/01	DRAWING TITLE	
APPROVED BY CM	5/2/01	OUTLINE DRAWING	
CONFIGURATION DETAILS OF UNDIMENSIONED FEATURES MAY VARY		SIZE A	REV. B
		FSCM NO. 43321	DWG. NO. CSM25MF-2.5-OD1
		SCALE: 1:1	CAD FILE: CSM25MF-2.5-OD1.SLDDRW SHEET 1 OF 1

L-com
 CONNECTIVITY PRODUCTS
 45 BEECHWOOD DRIVE
 NORTH ANDOVER, MA
 01845