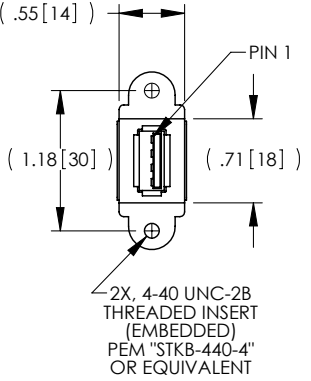
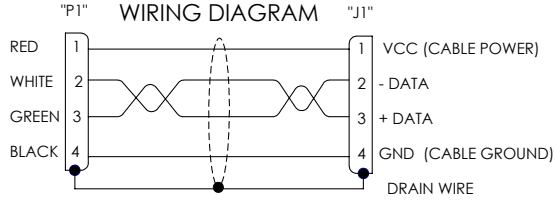
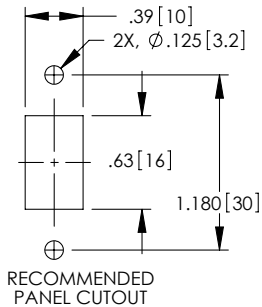
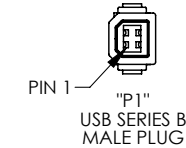
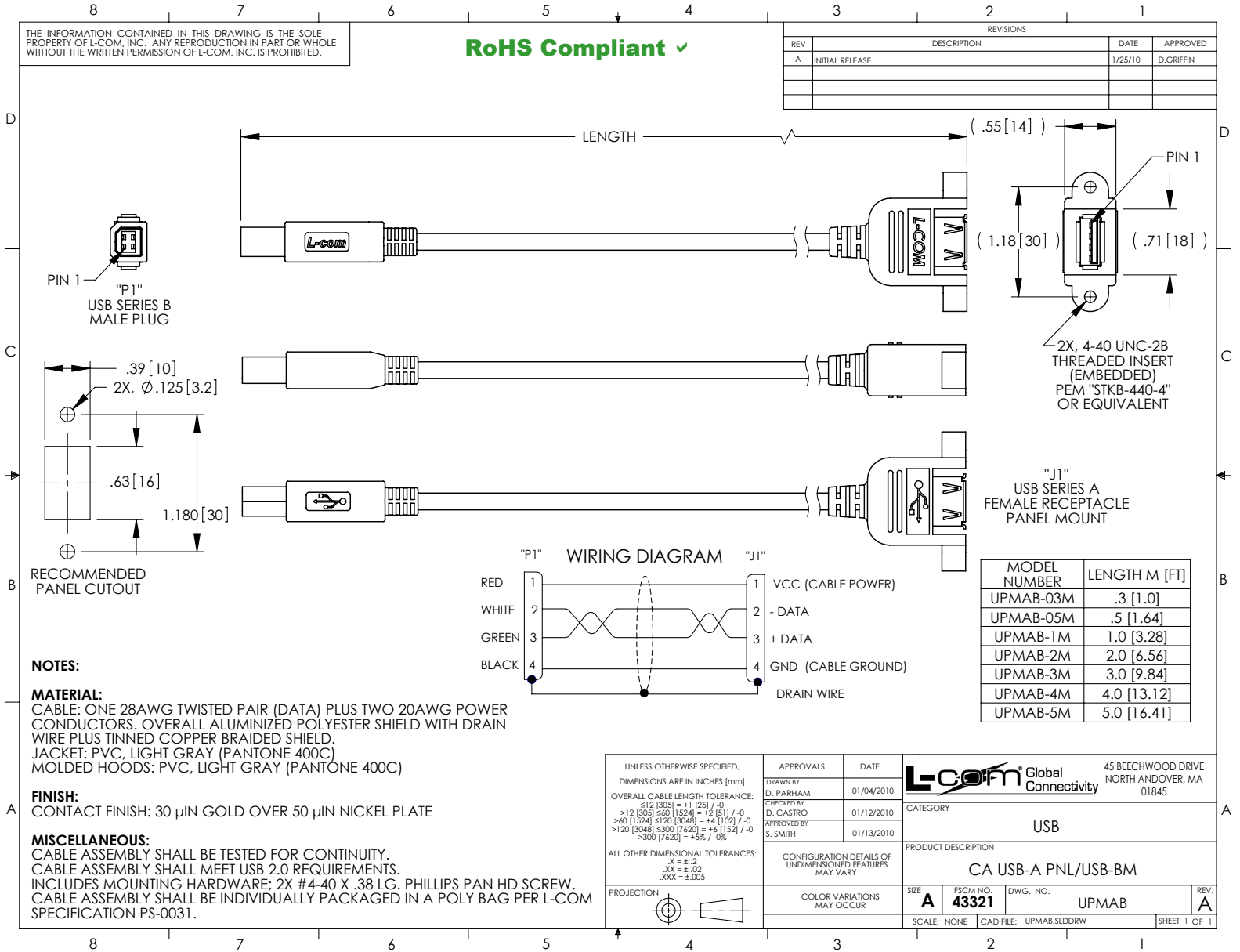


THE INFORMATION CONTAINED IN THIS DRAWING IS THE SOLE PROPERTY OF L-COM, INC. ANY REPRODUCTION IN PART OR WHOLE WITHOUT THE WRITTEN PERMISSION OF L-COM, INC. IS PROHIBITED.

RoHS Compliant ✓

REVISIONS			
REV	DESCRIPTION	DATE	APPROVED
A	INITIAL RELEASE	1/25/10	D.GRIFFIN



MODEL NUMBER	LENGTH M [FT]
UPMAB-03M	.3 [1.0]
UPMAB-05M	.5 [1.64]
UPMAB-1M	1.0 [3.28]
UPMAB-2M	2.0 [6.56]
UPMAB-3M	3.0 [9.84]
UPMAB-4M	4.0 [13.12]
UPMAB-5M	5.0 [16.41]

NOTES:

MATERIAL:
CABLE: ONE 28AWG TWISTED PAIR (DATA) PLUS TWO 20AWG POWER CONDUCTORS. OVERALL ALUMINIZED POLYESTER SHIELD WITH DRAIN WIRE PLUS TINNED COPPER BRAIDED SHIELD.
JACKET: PVC, LIGHT GRAY (PANTONE 400C)
MOLDED HOODS: PVC, LIGHT GRAY (PANTONE 400C)

FINISH:
CONTACT FINISH: 30 µIN GOLD OVER 50 µIN NICKEL PLATE

MISCELLANEOUS:
CABLE ASSEMBLY SHALL BE TESTED FOR CONTINUITY.
CABLE ASSEMBLY SHALL MEET USB 2.0 REQUIREMENTS.
INCLUDES MOUNTING HARDWARE; 2X #4-40 X .38 LG. PHILLIPS PAN HD SCREW.
CABLE ASSEMBLY SHALL BE INDIVIDUALLY PACKAGED IN A POLY BAG PER L-COM SPECIFICATION PS-0031.

UNLESS OTHERWISE SPECIFIED, DIMENSIONS ARE IN INCHES [mm]	APPROVALS	DATE	L-com Global Connectivity 45 BEECHWOOD DRIVE NORTH ANDOVER, MA 01845
OVERALL CABLE LENGTH TOLERANCE: ≤12 [305] = +1 [25] / -0 >12 [305] ≤60 [1524] = +2 [51] / -0 >60 [1524] ≤120 [3048] = +4 [102] / -0 >120 [3048] ≤300 [7620] = +6 [152] / -0 >300 [7620] = +5% / -0%	DRAWN BY D. PARHAM	01/04/2010	
ALL OTHER DIMENSIONAL TOLERANCES: X = ±.2 XX = ±.02 XXX = ±.005	CHECKED BY D. CASTRO	01/12/2010	CATEGORY USB
PROJECTION	APPROVED BY S. SMITH	01/13/2010	PRODUCT DESCRIPTION CA USB-A PNL/USB-BM
	CONFIGURATION DETAILS OF UNDIMENSIONED FEATURES MAY VARY		SIZE A
	COLOR VARIATIONS MAY OCCUR		FSCM NO. 43321
			DWG. NO. UPMAB
			SCALE: NONE
			CAD FILE: UPMAB.SLDRW
			REV. A
			SHEET 1 OF 1