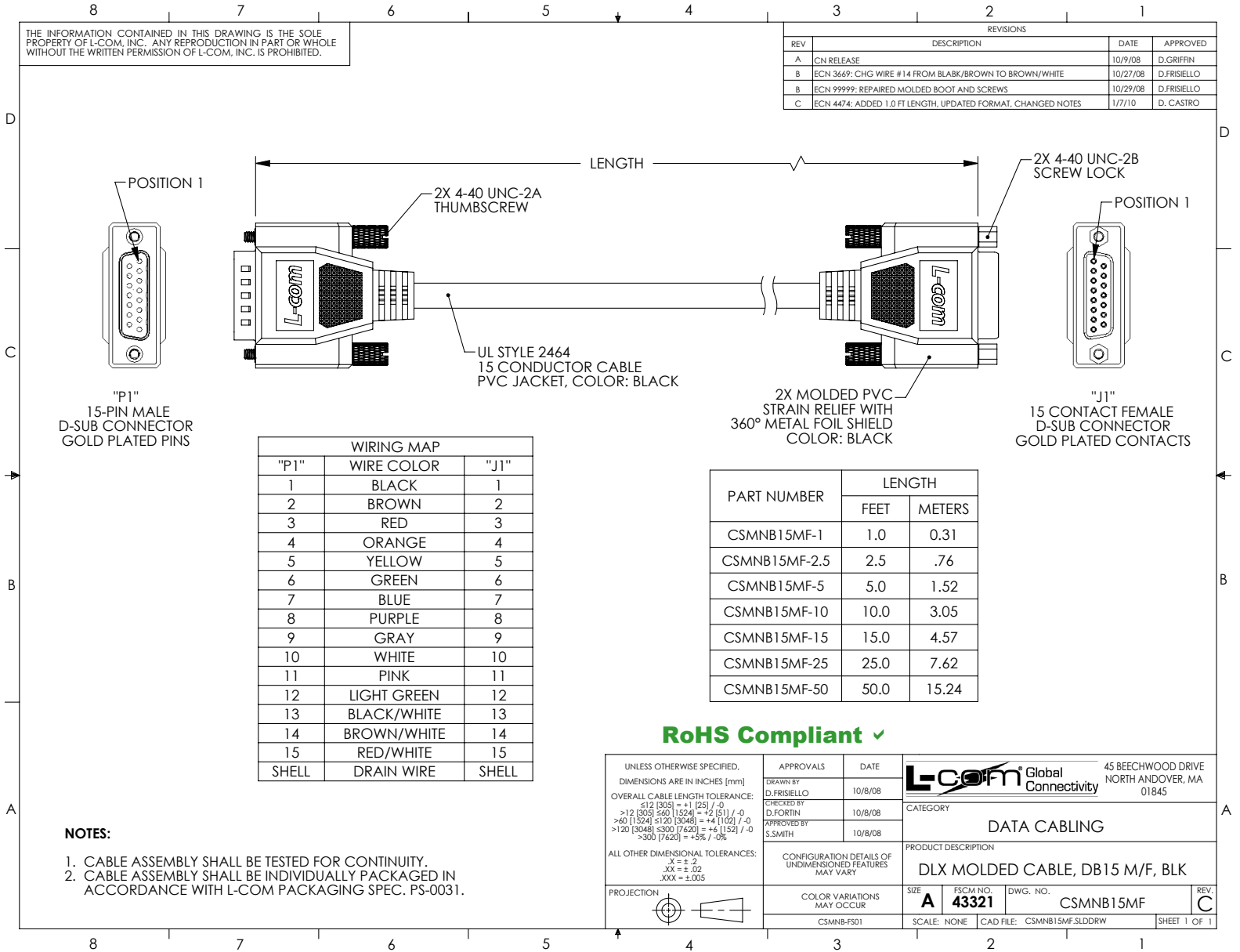


THE INFORMATION CONTAINED IN THIS DRAWING IS THE SOLE PROPERTY OF L-COM, INC. ANY REPRODUCTION IN PART OR WHOLE WITHOUT THE WRITTEN PERMISSION OF L-COM, INC. IS PROHIBITED.

REVISIONS			
REV	DESCRIPTION	DATE	APPROVED
A	CN RELEASE	10/9/08	D.GRIFFIN
B	ECN 3669: CHG WIRE #14 FROM BLAKK/BROWN TO BROWN/WHITE	10/27/08	D.FRISIELLO
B	ECN 99999: REPAIRED MOLDED BOOT AND SCREWS	10/29/08	D.FRISIELLO
C	ECN 4474: ADDED 1.0 FT LENGTH, UPDATED FORMAT, CHANGED NOTES	1/7/10	D. CASTRO



WIRING MAP		
"P1"	WIRE COLOR	"J1"
1	BLACK	1
2	BROWN	2
3	RED	3
4	ORANGE	4
5	YELLOW	5
6	GREEN	6
7	BLUE	7
8	PURPLE	8
9	GRAY	9
10	WHITE	10
11	PINK	11
12	LIGHT GREEN	12
13	BLACK/WHITE	13
14	BROWN/WHITE	14
15	RED/WHITE	15
SHELL	DRAIN WIRE	SHELL

PART NUMBER	LENGTH	
	FEET	METERS
CSMNB15MF-1	1.0	0.31
CSMNB15MF-2.5	2.5	.76
CSMNB15MF-5	5.0	1.52
CSMNB15MF-10	10.0	3.05
CSMNB15MF-15	15.0	4.57
CSMNB15MF-25	25.0	7.62
CSMNB15MF-50	50.0	15.24

RoHS Compliant ✓

- NOTES:**
1. CABLE ASSEMBLY SHALL BE TESTED FOR CONTINUITY.
 2. CABLE ASSEMBLY SHALL BE INDIVIDUALLY PACKAGED IN ACCORDANCE WITH L-COM PACKAGING SPEC. PS-0031.

UNLESS OTHERWISE SPECIFIED, DIMENSIONS ARE IN INCHES [mm]	APPROVALS	DATE		45 BEECHWOOD DRIVE NORTH ANDOVER, MA 01845
OVERALL CABLE LENGTH TOLERANCE: ≤ 12 [305] = +1 [25] / -0 >12 [305] ≤ 60 [1524] = +2 [51] / -0 >60 [1524] ≤ 120 [3048] = +4 [102] / -0 >120 [3048] ≤ 300 [7620] = +6 [152] / -0 >300 [7620] = +5% / -0%	DRAWN BY D.FRISIELLO	10/8/08		Global Connectivity
ALL OTHER DIMENSIONAL TOLERANCES: $X = \pm .2$ $XX = \pm .02$ $XXX = \pm .005$	CHECKED BY D.FORTIN	10/8/08	CATEGORY DATA CABLING	
PROJECTION	APPROVED BY S.SMITH	10/8/08	PRODUCT DESCRIPTION DLX MOLDED CABLE, DB15 M/F, BLK	REV. C
	CONFIGURATION DETAILS OF UNDIMENSIONED FEATURES MAY VARY	COLOR VARIATIONS MAY OCCUR CSMNB-F501	SIZE A FSCM NO. 43321 DWG. NO. CSMNB15MF	SHEET 1 OF 1
			SCALE: NONE CAD FILE: CSMNB15MF.SLDDRW	