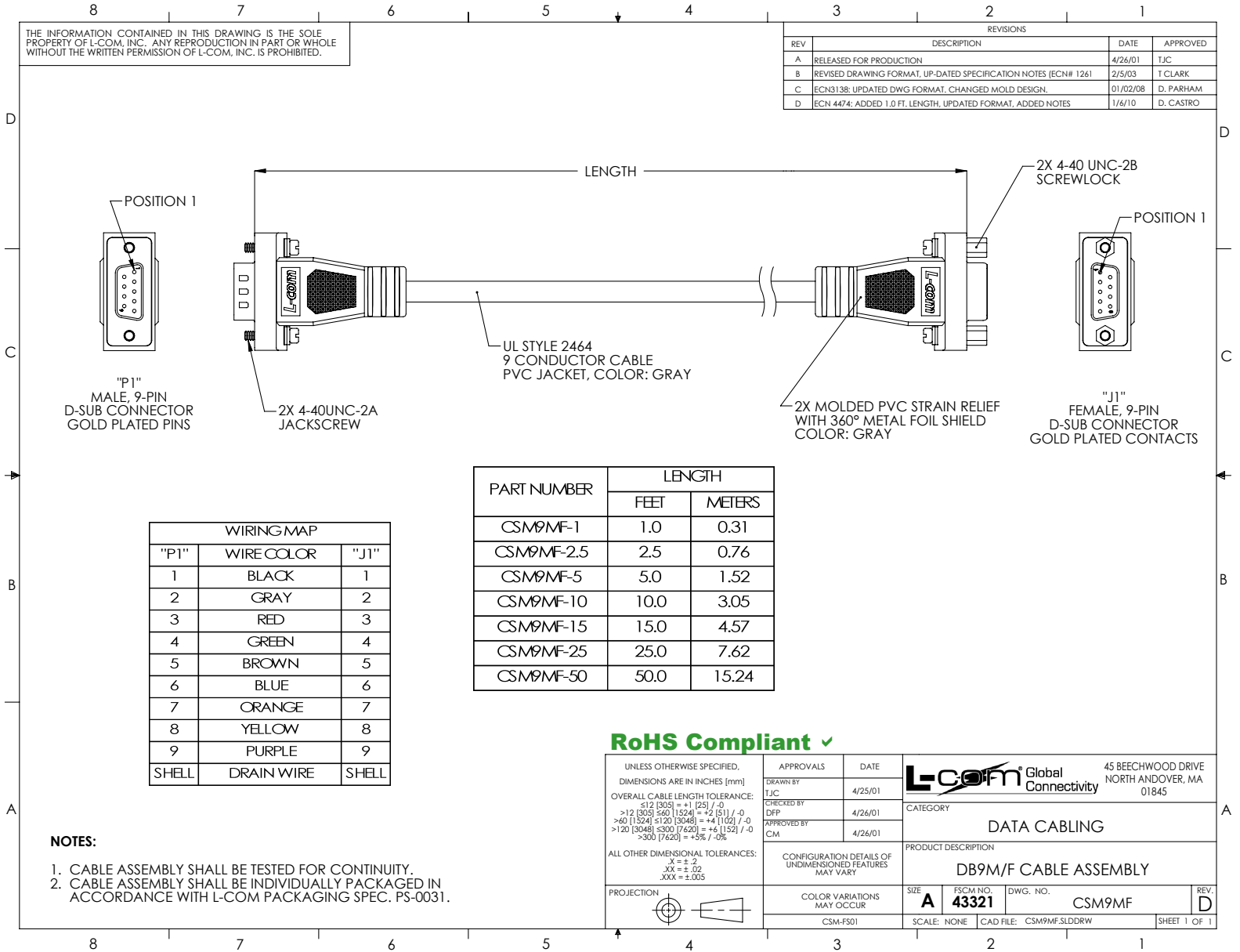


THE INFORMATION CONTAINED IN THIS DRAWING IS THE SOLE PROPERTY OF L-COM, INC. ANY REPRODUCTION IN PART OR WHOLE WITHOUT THE WRITTEN PERMISSION OF L-COM, INC. IS PROHIBITED.

REVISIONS			
REV	DESCRIPTION	DATE	APPROVED
A	RELEASED FOR PRODUCTION	4/26/01	TJC
B	REVISED DRAWING FORMAT, UP-DATED SPECIFICATION NOTES (ECN# 1261)	2/5/03	T CLARK
C	ECN3138: UPDATED DWG FORMAT, CHANGED MOLD DESIGN.	01/02/08	D. PARHAM
D	ECN 4474: ADDED 1.0 FT. LENGTH, UPDATED FORMAT, ADDED NOTES	1/6/10	D. CASTRO



"P1"
MALE, 9-PIN
D-SUB CONNECTOR
GOLD PLATED PINS

2X 4-40UNC-2A
JACKSCREW

UL STYLE 2464
9 CONDUCTOR CABLE
PVC JACKET, COLOR: GRAY

2X MOLDED PVC STRAIN RELIEF
WITH 360° METAL FOIL SHIELD
COLOR: GRAY

"J1"
FEMALE, 9-PIN
D-SUB CONNECTOR
GOLD PLATED CONTACTS

PART NUMBER	LENGTH	
	FEET	METERS
CSM9MF-1	1.0	0.31
CSM9MF-2.5	2.5	0.76
CSM9MF-5	5.0	1.52
CSM9MF-10	10.0	3.05
CSM9MF-15	15.0	4.57
CSM9MF-25	25.0	7.62
CSM9MF-50	50.0	15.24

WIRING MAP		
"P1"	WIRE COLOR	"J1"
1	BLACK	1
2	GRAY	2
3	RED	3
4	GREEN	4
5	BROWN	5
6	BLUE	6
7	ORANGE	7
8	YELLOW	8
9	PURPLE	9
SHELL	DRAIN WIRE	SHELL

RoHS Compliant ✓

- NOTES:**
- CABLE ASSEMBLY SHALL BE TESTED FOR CONTINUITY.
 - CABLE ASSEMBLY SHALL BE INDIVIDUALLY PACKAGED IN ACCORDANCE WITH L-COM PACKAGING SPEC. PS-0031.

UNLESS OTHERWISE SPECIFIED, DIMENSIONS ARE IN INCHES [mm] OVERALL CABLE LENGTH TOLERANCE: ≤12 [305] = +1 [25] / -0 >12 [305] ≤60 [1524] = +2 [51] / -0 >60 [1524] ≤120 [3048] = +4 [102] / -0 >120 [3048] ≤300 [7620] = +6 [152] / -0 >300 [7620] = +5% / -0%	APPROVALS DRAWN BY TJC CHECKED BY DFP APPROVED BY CM	DATE 4/25/01 4/26/01 4/26/01	L-com Global Connectivity 45 BEECHWOOD DRIVE NORTH ANDOVER, MA 01845
ALL OTHER DIMENSIONAL TOLERANCES: X = ±.2 XX = ±.02 XXX = ±.005	CONFIGURATION DETAILS OF UNDIMENSIONED FEATURES MAY VARY	CATEGORY DATA CABLING	PRODUCT DESCRIPTION DB9M/F CABLE ASSEMBLY
PROJECTION 	COLOR VARIATIONS MAY OCCUR CSM-FS01	SIZE A	FSCM NO. 43321
		DWG. NO. CSM9MF	REV. D
		SCALE: NONE	CAD FILE: CSM9MF.SLDDRW
			SHEET 1 OF 1