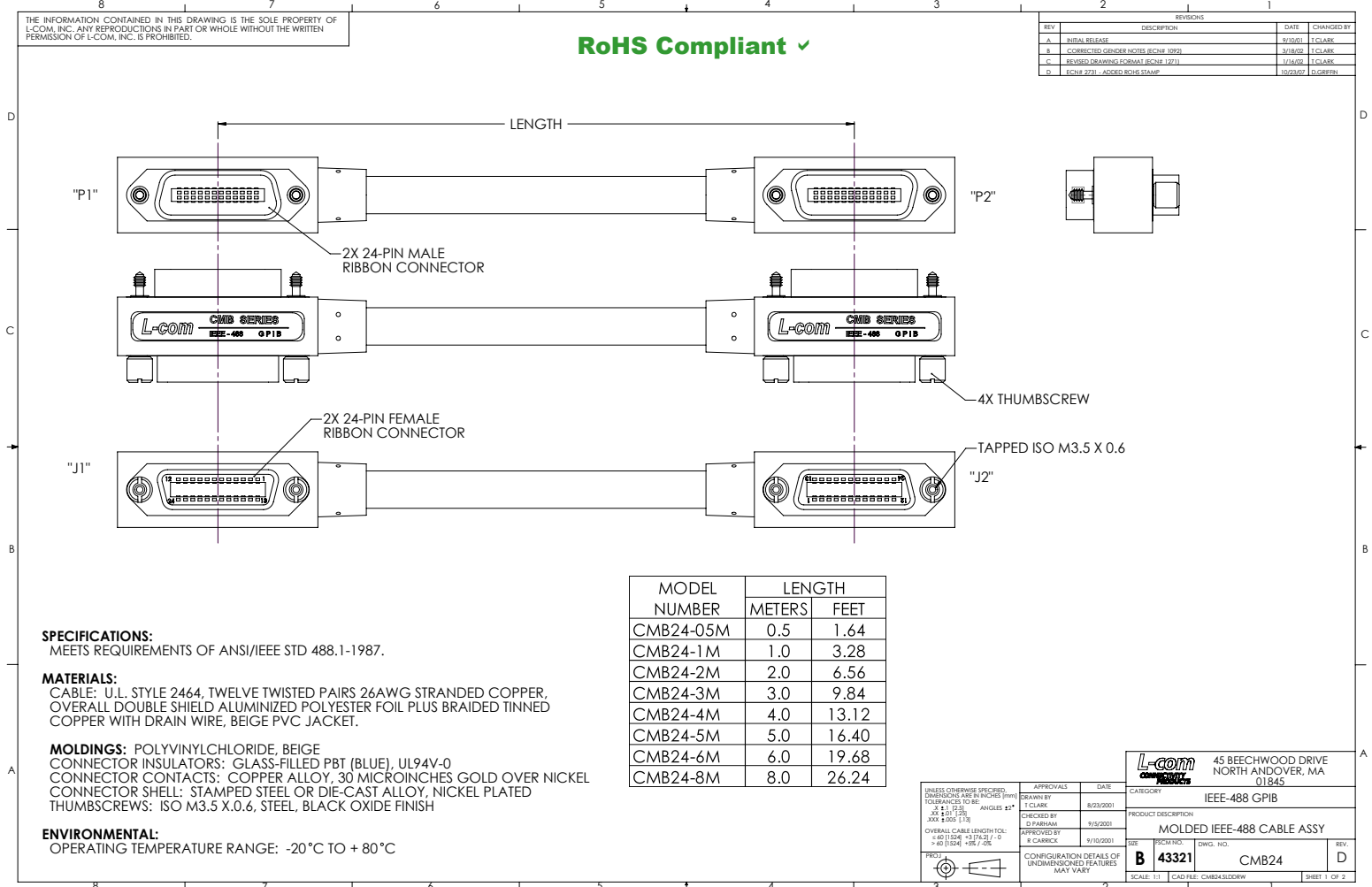


THE INFORMATION CONTAINED IN THIS DRAWING IS THE SOLE PROPERTY OF L-COM, INC. ANY REPRODUCTIONS IN PART OR WHOLE WITHOUT THE WRITTEN PERMISSION OF L-COM, INC. IS PROHIBITED.

RoHS Compliant ✓

REVISIONS			
REV	DESCRIPTION	DATE	CHANGED BY
A	INITIAL RELEASE	9/10/2001	L.CLARK
B	CONNECTED ENDER NOTES (ECHO 109)	3/16/2002	L.CLARK
C	REVISED DRAWING FORMAT (ECHO 1271)	1/16/02	L.CLARK
D	ECHO 2271 - ADDED ROHS STAMP	10/23/07	D.GREFF



MODEL NUMBER	LENGTH	
	METERS	FEET
CMB24-05M	0.5	1.64
CMB24-1M	1.0	3.28
CMB24-2M	2.0	6.56
CMB24-3M	3.0	9.84
CMB24-4M	4.0	13.12
CMB24-5M	5.0	16.40
CMB24-6M	6.0	19.68
CMB24-8M	8.0	26.24

SPECIFICATIONS:
MEETS REQUIREMENTS OF ANSI/IEEE STD 488.1-1987.

MATERIALS:
CABLE: U.L. STYLE 2464, TWELVE TWISTED PAIRS 26AWG STRANDED COPPER, OVERALL DOUBLE SHIELD ALUMINIZED POLYESTER FOIL PLUS BRAIDED TINNED COPPER WITH DRAIN WIRE, BEIGE PVC JACKET.

MOLDINGS: POLYVINYLCHLORIDE, BEIGE
CONNECTOR INSULATORS: GLASS-FILLED PBT (BLUE), UL94V-0
CONNECTOR CONTACTS: COPPER ALLOY, 30 MICROINCHES GOLD OVER NICKEL
CONNECTOR SHELL: STAMPED STEEL OR DIE-CAST ALLOY, NICKEL PLATED
THUMBSCREWS: ISO M3.5 X 0.6, STEEL, BLACK OXIDE FINISH

ENVIRONMENTAL:
OPERATING TEMPERATURE RANGE: -20°C TO + 80°C

<small>UNLESS OTHERWISE SPECIFIED, DIMENSIONS ARE IN INCHES (MM) TOLERANCES TO BE: X .1 (2.5) ANGLES ±2° XX .005 (0.125) XXX .001 (0.025) OVERALL CABLE LENGTH TOL: ±.02 (0.508) ±.1 (2.54) / -0 -9.00 (0.00) / +0.06 (1.52)</small>	<small>APPROVALS</small> DRAWN BY: L. CLARK CHECKED BY: D. FARHAM APPROVED BY: R. CARROLL	<small>DATE</small> 8/23/2001 9/10/2001 9/10/2001	<small>L-com</small> 45 BEECHWOOD DRIVE NORTH ANDOVER, MA 01845 CATEGORY: IEEE-488 GPIB PRODUCT DESCRIPTION: MOLDED IEEE-488 CABLE ASSY DWG. NO.: CMB24 REV: D
	<small>FIG. 1</small> 	<small>CONFIGURATION DETAILS OF UNDIMENSIONED FEATURES MAY VARY</small>	<small>SCALE: 1:1</small> <small>CAD FILE: CMB24.DLDRAW</small>


THE INFORMATION CONTAINED IN THIS DRAWING IS THE SOLE PROPERTY OF L-COM, INC. ANY REPRODUCTIONS IN PART OR WHOLE WITHOUT THE WRITTEN PERMISSION OF L-COM, INC. IS PROHIBITED.

RoHS Compliant ✓

REVISIONS			
REV	DESCRIPTION	DATE	APPROVED
A	INITIAL RELEASE	9/15/01	J. CLARK
B	CONNECTED PITCHES NOTED (ECHO 102)	3/16/02	J. CLARK
C	REVISED DRAWING FORMAT (ECHO 1271)	1/16/02	J. CLARK
D	ECHO 2271 - ADDED ROHS STAMP	10/23/07	D. GRIFFIN

WIRING TABLE			
PAIR NUMBER	J1/P1	J2/P2	FUNCTION
1	1	1	DATA LINE DI01
	14	14	DATA LINE DI02
2	2	2	DATA LINE DI03
	3	3	DATA LINE DI04
3	4	4	DATA LINE DI05
	13	13	DATA LINE DI06
4	15	15	DATA LINE DI07
	16	16	DATA LINE DI08
5	5	5	EOI
	24	24	EOI RETURN
6	6	6	DAV
	18	18	DAV RETURN
7	7	7	NRFD
	19	19	NRFD RETURN
8	8	8	NDAC
	20	20	NDAC RETURN
9	9	9	IFC
	21	21	IFC RETURN
10	10	10	SRQ
	22	22	SRQ RETURN
11	11	11	ATN
	23	23	ATN RETURN
12	17	17	REN
	24	24	REN RETURN
DRAIN WIRE	12 & SHELL	12 & SHELL	SHIELD

CABLE CONSTRUCTION COMPLIES WITH COM SPECIFICATION CMB-CS1.

		45 BEECHWOOD DRIVE NORTH ANDOVER, MA 01845	
PRODUCT DESCRIPTION			
DRAWING TITLE			
OUTLINE DRAWING			
REV	REV. NO.	DWG. NO.	REV.
B	43321	CMB24	D
SCALE: 1:1		CAD FILE: CMB24.DDWRW	SHEET 2 OF 2