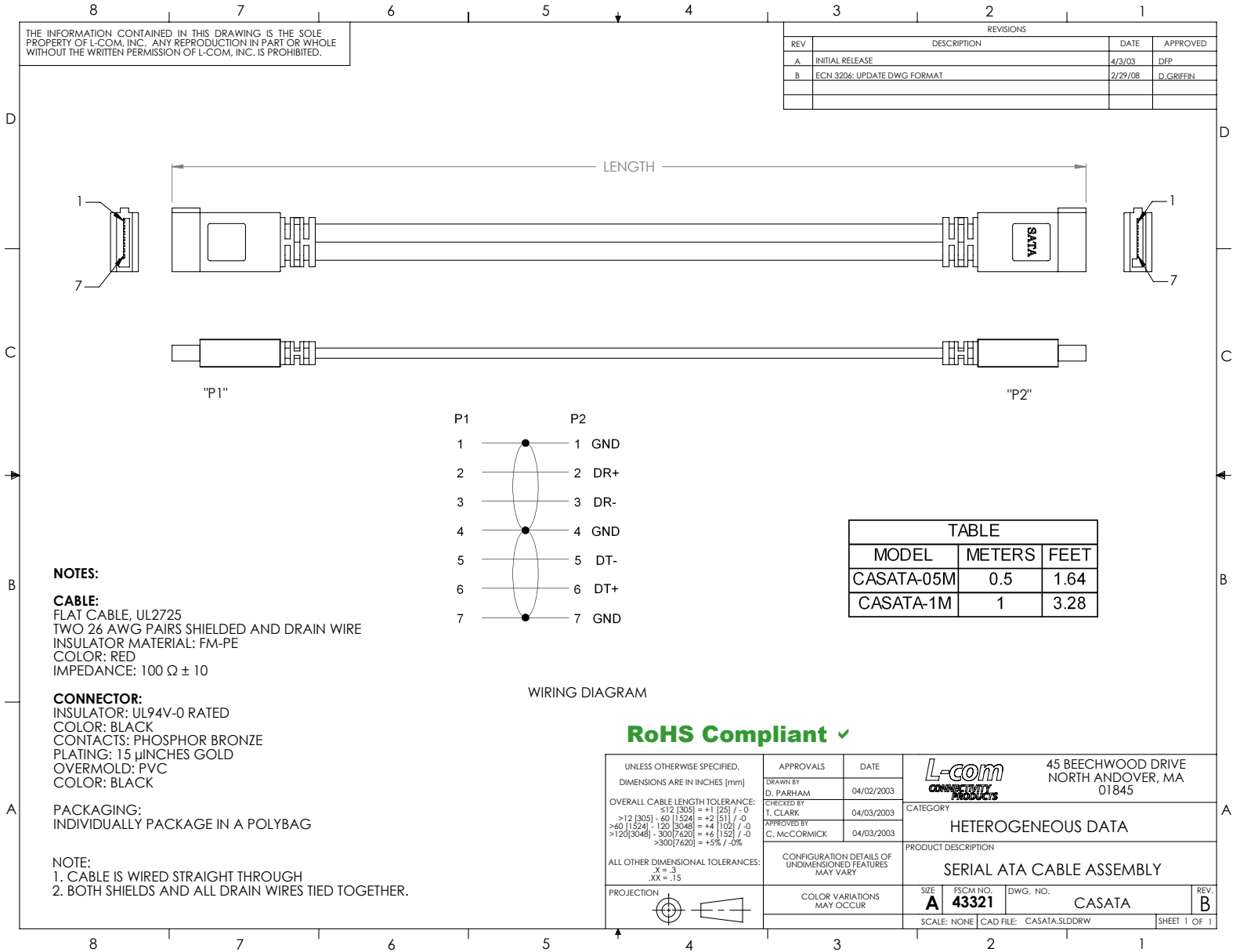


THE INFORMATION CONTAINED IN THIS DRAWING IS THE SOLE PROPERTY OF L-COM, INC. ANY REPRODUCTION IN PART OR WHOLE WITHOUT THE WRITTEN PERMISSION OF L-COM, INC. IS PROHIBITED.

REVISIONS			
REV	DESCRIPTION	DATE	APPROVED
A	INITIAL RELEASE	4/3/03	DFF
B	ECN 3206: UPDATE DWG FORMAT	2/29/08	D.GRIFFIN



NOTES:

CABLE:
 FLAT CABLE, UL2725
 TWO 26 AWG PAIRS SHIELDED AND DRAIN WIRE
 INSULATOR MATERIAL: FM-PE
 COLOR: RED
 IMPEDANCE: 100 Ω ± 10

CONNECTOR:
 INSULATOR: UL94V-0 RATED
 COLOR: BLACK
 CONTACTS: PHOSPHOR BRONZE
 PLATING: 15 μINCHES GOLD
 OVERMOLD: PVC
 COLOR: BLACK

PACKAGING:
 INDIVIDUALLY PACKAGE IN A POLYBAG

NOTE:
 1. CABLE IS WIRED STRAIGHT THROUGH
 2. BOTH SHIELDS AND ALL DRAIN WIRES TIED TOGETHER.

WIRING DIAGRAM

RoHS Compliant ✓

UNLESS OTHERWISE SPECIFIED, DIMENSIONS ARE IN INCHES [mm]	APPROVALS	DATE		45 BEECHWOOD DRIVE NORTH ANDOVER, MA 01845		
	DRAWN BY D. PARHAM	04/02/2003				
OVERALL CABLE LENGTH TOLERANCE: -12 [305] = +1 [25] / -0 >12 [305] - 60 [1524] = +2 [51] / -0 >60 [1524] - 120 [3048] = +4 [102] / -0 >120 [3048] - 300 [7620] = +6 [152] / -0 >300 [7620] = +5% / -0%	CHECKED BY T. CLARK	04/03/2003	CATEGORY HETEROGENEOUS DATA			
	APPROVED BY C. MCCORMICK	04/03/2003	PRODUCT DESCRIPTION SERIAL ATA CABLE ASSEMBLY			
ALL OTHER DIMENSIONAL TOLERANCES: X = .3 .XX = .15	CONFIGURATION DETAILS OF UNDIMENSIONED FEATURES MAY VARY		SIZE A	FSCM NO. 43321	DWG. NO. CASATA	REV. B
PROJECTION 	COLOR VARIATIONS MAY OCCUR		SCALE: NONE	CAD FILE: CASATA.SLDRW	SHEET 1 OF 1	