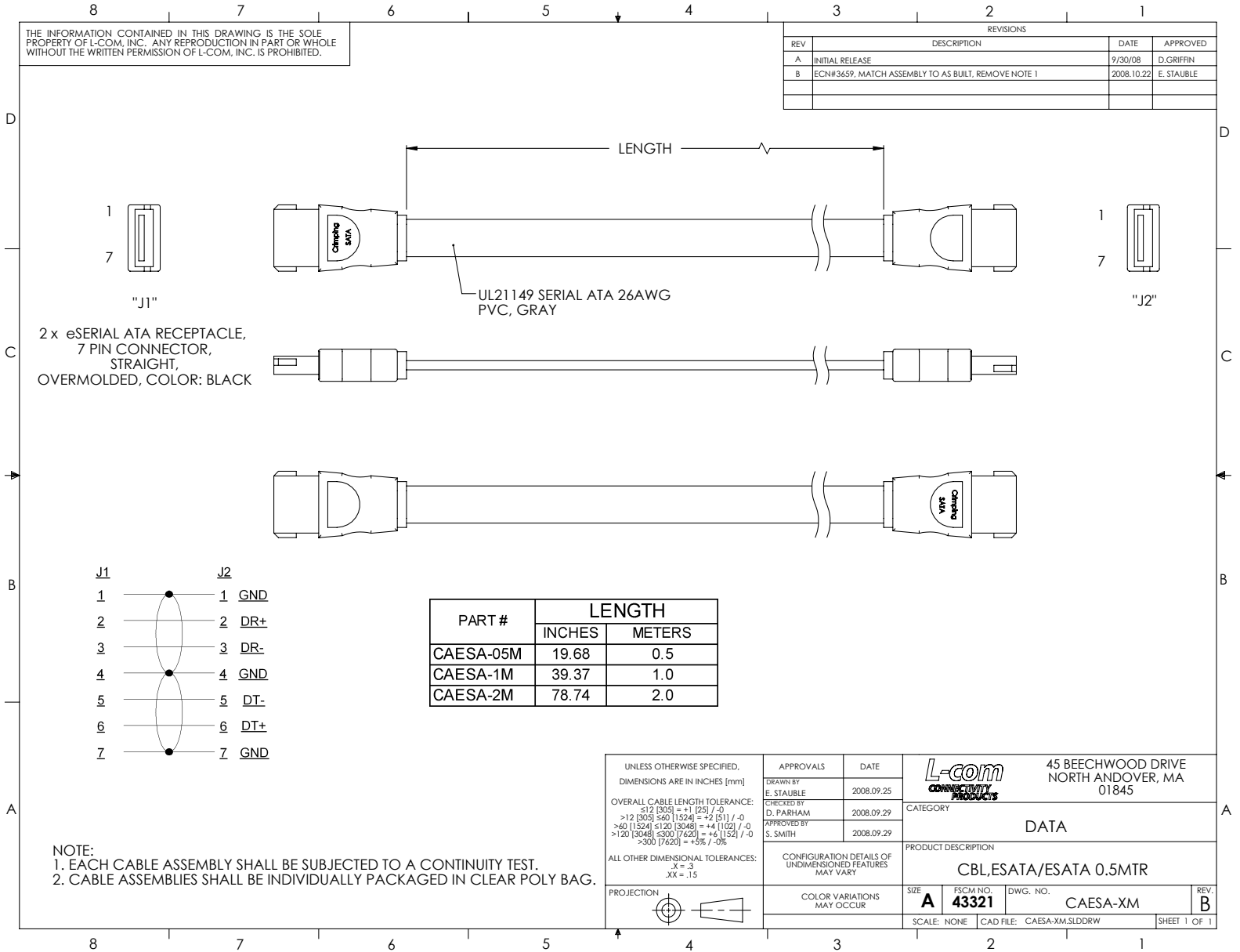


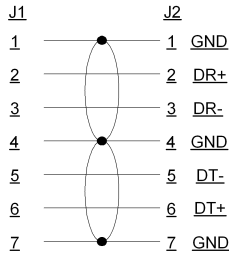
THE INFORMATION CONTAINED IN THIS DRAWING IS THE SOLE PROPERTY OF L-COM, INC. ANY REPRODUCTION IN PART OR WHOLE WITHOUT THE WRITTEN PERMISSION OF L-COM, INC. IS PROHIBITED.

REVISIONS			
REV	DESCRIPTION	DATE	APPROVED
A	INITIAL RELEASE	9/30/08	D.GRIFFIN
B	ECN#3659, MATCH ASSEMBLY TO AS BUILT, REMOVE NOTE 1	2008.10.22	E. STAUBLE



2x eSERIAL ATA RECEPTACLE, 7 PIN CONNECTOR, STRAIGHT, OVERMOLDED, COLOR: BLACK

UL21149 SERIAL ATA 26AWG PVC, GRAY



PART #	LENGTH	
	INCHES	METERS
CAESA-05M	19.68	0.5
CAESA-1M	39.37	1.0
CAESA-2M	78.74	2.0

NOTE:
 1. EACH CABLE ASSEMBLY SHALL BE SUBJECTED TO A CONTINUITY TEST.
 2. CABLE ASSEMBLIES SHALL BE INDIVIDUALLY PACKAGED IN CLEAR POLY BAG.

UNLESS OTHERWISE SPECIFIED, DIMENSIONS ARE IN INCHES [mm]	APPROVALS	DATE		45 BEECHWOOD DRIVE NORTH ANDOVER, MA 01845
	DRAWN BY E. STAUBLE	2008.09.25		
OVERALL CABLE LENGTH TOLERANCE: ≤ 12 [305] ≤ 60 [1524] = +2 [51] / -0 > 60 [1524] ≤ 120 [3048] = +4 [102] / -0 > 120 [3048] ≤ 300 [7620] = +6 [152] / -0 > 300 [7620] = +3% / -0%	CHECKED BY D. PARHAM	2008.09.29	CATEGORY DATA	
	APPROVED BY S. SMITH	2008.09.29	PRODUCT DESCRIPTION CBL,ESATA/ESATA 0.5MTR	
ALL OTHER DIMENSIONAL TOLERANCES: X = .3 XX = .15	CONFIGURATION DETAILS OF UNDIMENSIONED FEATURES MAY VARY		SIZE A	FSCM NO. 43321
PROJECTION	COLOR VARIATIONS MAY OCCUR		DWG. NO. CAESA-XM	REV. B
			SCALE: NONE	CAD FILE: CAESA-XM.SLDDRW