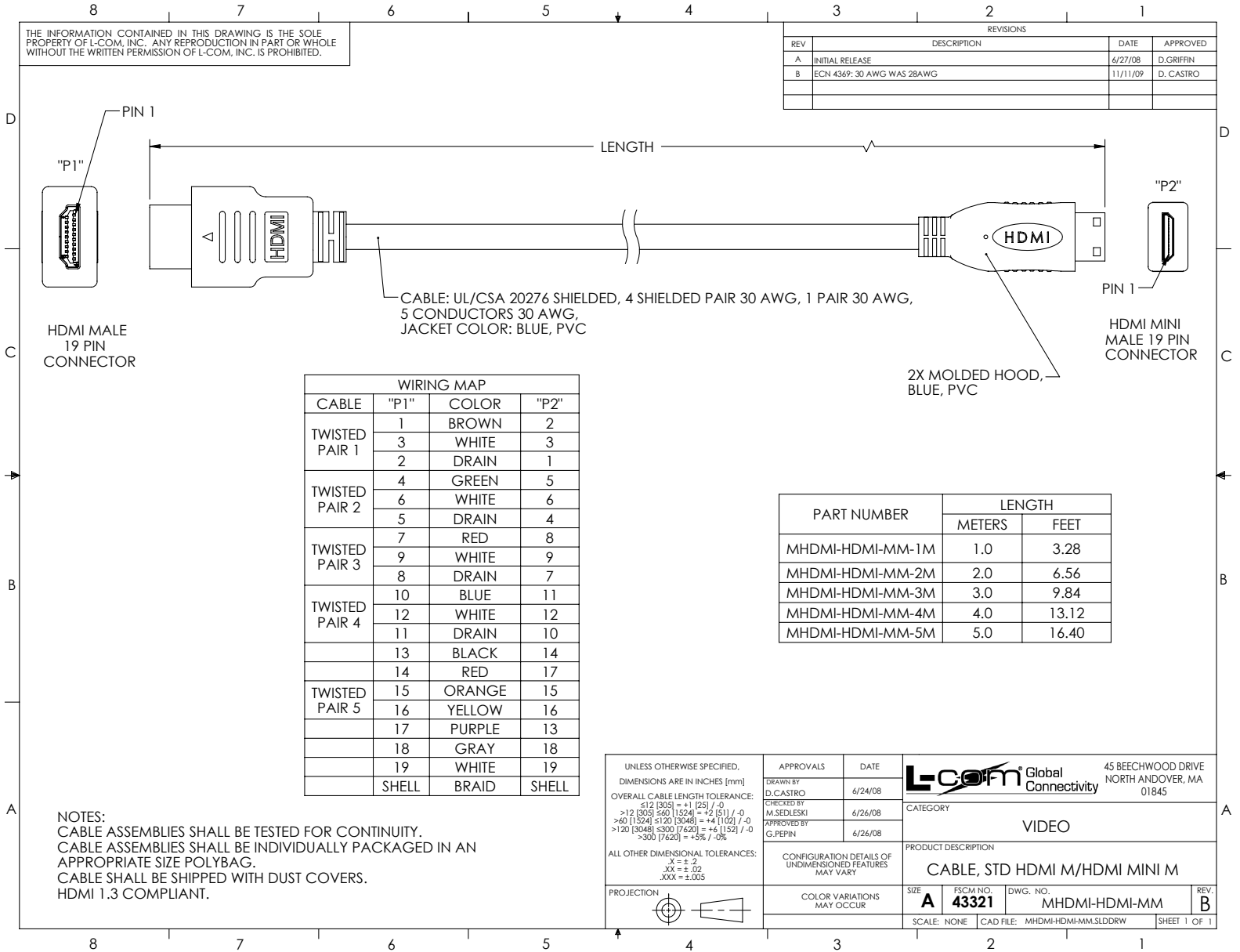


THE INFORMATION CONTAINED IN THIS DRAWING IS THE SOLE PROPERTY OF L-COM, INC. ANY REPRODUCTION IN PART OR WHOLE WITHOUT THE WRITTEN PERMISSION OF L-COM, INC. IS PROHIBITED.

REVISIONS			
REV	DESCRIPTION	DATE	APPROVED
A	INITIAL RELEASE	6/27/08	D.GRIFFIN
B	ECN 4369: 30 AWG WAS 28AWG	11/11/09	D. CASTRO



CABLE: UL/CSA 20276 SHIELDED, 4 SHIELDED PAIR 30 AWG, 1 PAIR 30 AWG, 5 CONDUCTORS 30 AWG, JACKET COLOR: BLUE, PVC

2X MOLDED HOOD, BLUE, PVC

HDMI MALE 19 PIN CONNECTOR

HDMI MINI MALE 19 PIN CONNECTOR

WIRING MAP			
CABLE	"P1"	COLOR	"P2"
TWISTED PAIR 1	1	BROWN	2
	3	WHITE	3
	2	DRAIN	1
TWISTED PAIR 2	4	GREEN	5
	6	WHITE	6
	5	DRAIN	4
TWISTED PAIR 3	7	RED	8
	9	WHITE	9
	8	DRAIN	7
TWISTED PAIR 4	10	BLUE	11
	12	WHITE	12
	11	DRAIN	10
	13	BLACK	14
TWISTED PAIR 5	14	RED	17
	15	ORANGE	15
	16	YELLOW	16
	17	PURPLE	13
	18	GRAY	18
	19	WHITE	19
	SHELL	BRAID	SHELL

PART NUMBER	LENGTH	
	METERS	FEET
MHDMI-HDMI-MM-1M	1.0	3.28
MHDMI-HDMI-MM-2M	2.0	6.56
MHDMI-HDMI-MM-3M	3.0	9.84
MHDMI-HDMI-MM-4M	4.0	13.12
MHDMI-HDMI-MM-5M	5.0	16.40

NOTES:  
 CABLE ASSEMBLIES SHALL BE TESTED FOR CONTINUITY.  
 CABLE ASSEMBLIES SHALL BE INDIVIDUALLY PACKAGED IN AN APPROPRIATE SIZE POLYBAG.  
 CABLE SHALL BE SHIPPED WITH DUST COVERS.  
 HDMI 1.3 COMPLIANT.

UNLESS OTHERWISE SPECIFIED, DIMENSIONS ARE IN INCHES [mm]	APPROVALS	DATE		45 BEECHWOOD DRIVE NORTH ANDOVER, MA 01845
OVERALL CABLE LENGTH TOLERANCE: $\leq 12$ [305] = +1 [25] / -0 $>12$ [305] $\leq 60$ [1524] = +2 [51] / -0 $>60$ [1524] $\leq 120$ [3048] = +4 [102] / -0 $>120$ [3048] $\leq 300$ [7620] = +6 [152] / -0 $>300$ [7620] = +5% / -0%	DRAWN BY D.CASTRO	6/24/08		
ALL OTHER DIMENSIONAL TOLERANCES: $X = \pm .2$ $XX = \pm .02$ $XXX = \pm .005$	CHECKED BY M.SEDLESKI	6/26/08	PRODUCT DESCRIPTION <b>CABLE, STD HDMI M/HDMI MINI M</b>	
PROJECTION 	APPROVED BY G.PEPIN	6/26/08	CONFIGURATION DETAILS OF UNDIMENSIONED FEATURES MAY VARY COLOR VARIATIONS MAY OCCUR	SCALE: NONE CAD FILE: MHDMI-HDMI-MM.SLDDRW
			SIZE <b>A</b> FSCM NO. <b>43321</b> DWG. NO. MHDMI-HDMI-MM	REV. <b>B</b> SHEET 1 OF 1