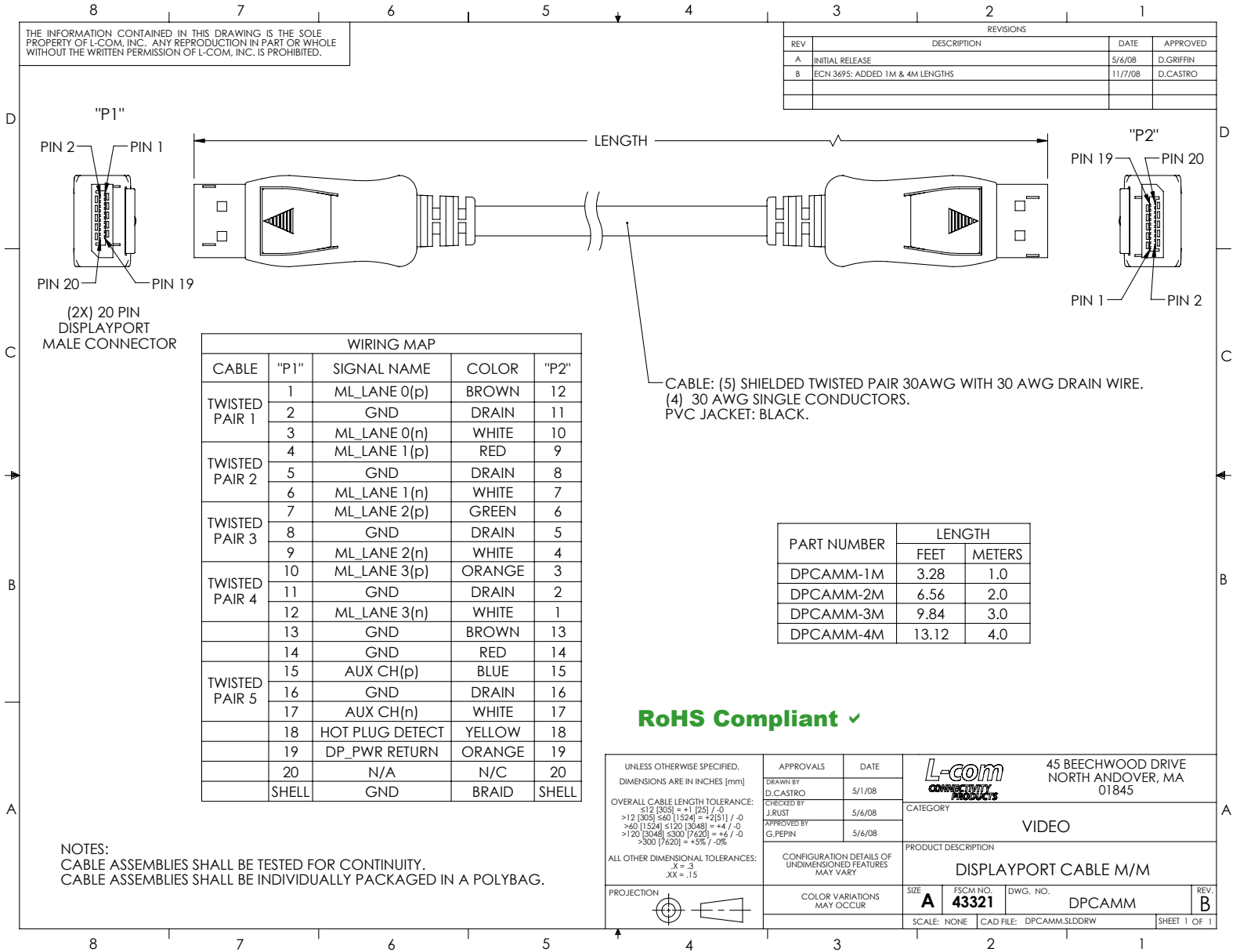


THE INFORMATION CONTAINED IN THIS DRAWING IS THE SOLE PROPERTY OF L-COM, INC. ANY REPRODUCTION IN PART OR WHOLE WITHOUT THE WRITTEN PERMISSION OF L-COM, INC. IS PROHIBITED.

REVISIONS			
REV	DESCRIPTION	DATE	APPROVED
A	INITIAL RELEASE	5/6/08	D.GRIFIN
B	ECN 3695: ADDED 1M & 4M LENGTHS	11/7/08	D.CASTRO



WIRING MAP				
CABLE	"P1"	SIGNAL NAME	COLOR	"P2"
TWISTED PAIR 1	1	ML_LANE 0(p)	BROWN	12
	2	GND	DRAIN	11
	3	ML_LANE 0(n)	WHITE	10
TWISTED PAIR 2	4	ML_LANE 1(p)	RED	9
	5	GND	DRAIN	8
	6	ML_LANE 1(n)	WHITE	7
TWISTED PAIR 3	7	ML_LANE 2(p)	GREEN	6
	8	GND	DRAIN	5
	9	ML_LANE 2(n)	WHITE	4
TWISTED PAIR 4	10	ML_LANE 3(p)	ORANGE	3
	11	GND	DRAIN	2
	12	ML_LANE 3(n)	WHITE	1
TWISTED PAIR 5	13	GND	BROWN	13
	14	GND	RED	14
	15	AUX CH(p)	BLUE	15
	16	GND	DRAIN	16
	17	AUX CH(n)	WHITE	17
	18	HOT PLUG DETECT	YELLOW	18
	19	DP_PWR RETURN	ORANGE	19
20	N/A	N/C	20	
SHELL	GND	BRAID	SHELL	

CABLE: (5) SHIELDED TWISTED PAIR 30AWG WITH 30 AWG DRAIN WIRE.  
(4) 30 AWG SINGLE CONDUCTORS.  
PVC JACKET: BLACK.

PART NUMBER	LENGTH	
	FEET	METERS
DPCAMM-1M	3.28	1.0
DPCAMM-2M	6.56	2.0
DPCAMM-3M	9.84	3.0
DPCAMM-4M	13.12	4.0

**RoHS Compliant** ✓

NOTES:  
CABLE ASSEMBLIES SHALL BE TESTED FOR CONTINUITY.  
CABLE ASSEMBLIES SHALL BE INDIVIDUALLY PACKAGED IN A POLYBAG.

UNLESS OTHERWISE SPECIFIED, DIMENSIONS ARE IN INCHES [mm]	APPROVALS	DATE		45 BEECHWOOD DRIVE NORTH ANDOVER, MA 01845
	DRAWN BY D.CASTRO	5/1/08		
OVERALL CABLE LENGTH TOLERANCE: ≤12 [305] ≤40 [1024] = +1 [25] / -0 >12 [305] ≤40 [1024] = ±2[51] / -0 >40 [1024] ≤120 [3048] = +4 / -0 >120 [3048] ≤300 [7620] = +6 / -0 >300 [7620] = +3% / -0%	CHECKED BY J.RUST	5/6/08	CATEGORY VIDEO	
	APPROVED BY G.PEPIN	5/6/08	PRODUCT DESCRIPTION DISPLAYPORT CABLE M/M	
PROJECTION 	ALL OTHER DIMENSIONAL TOLERANCES: X = .3 XX = .15	CONFIGURATION DETAILS OF UNDIMENSIONED FEATURES MAY VARY	SIZE <b>A</b>	FSCM NO. <b>43321</b>
	COLOR VARIATIONS MAY OCCUR	DWG. NO. DPCAMM	SCALE: NONE	CAD FILE: DPCAMM.SLDDRW
		REV. <b>B</b>	SHEET 1 OF 1	