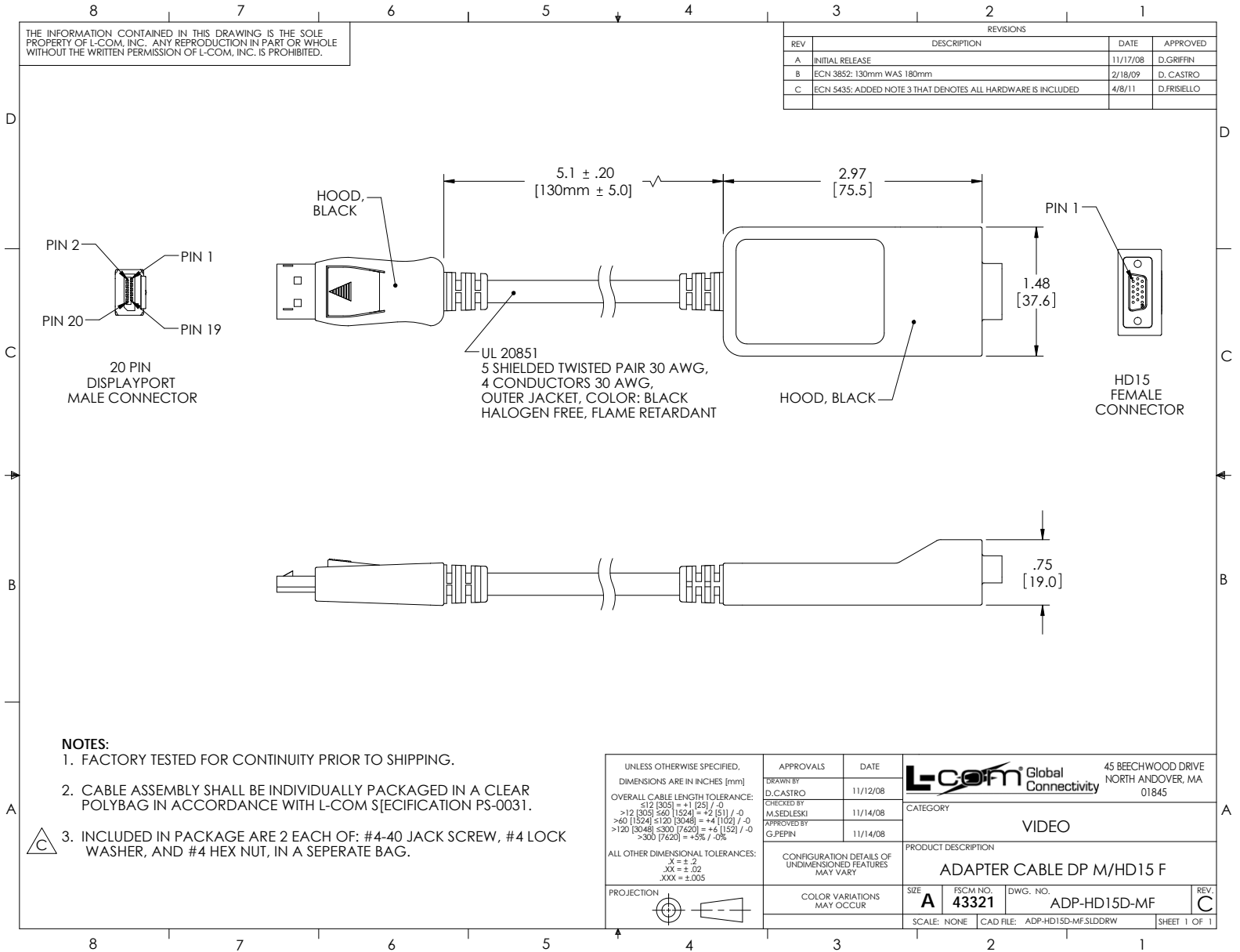


THE INFORMATION CONTAINED IN THIS DRAWING IS THE SOLE PROPERTY OF L-COM, INC. ANY REPRODUCTION IN PART OR WHOLE WITHOUT THE WRITTEN PERMISSION OF L-COM, INC. IS PROHIBITED.

REVISIONS			
REV	DESCRIPTION	DATE	APPROVED
A	INITIAL RELEASE	11/17/08	D.GRIFFIN
B	ECN 3852: 130mm WAS 180mm	2/18/09	D. CASTRO
C	ECN 5435: ADDED NOTE 3 THAT DENOTES ALL HARDWARE IS INCLUDED	4/8/11	D.FRISIELLO



**NOTES:**

1. FACTORY TESTED FOR CONTINUITY PRIOR TO SHIPPING.
2. CABLE ASSEMBLY SHALL BE INDIVIDUALLY PACKAGED IN A CLEAR POLYBAG IN ACCORDANCE WITH L-COM SPECIFICATION PS-0031.
3. INCLUDED IN PACKAGE ARE 2 EACH OF: #4-40 JACK SCREW, #4 LOCK WASHER, AND #4 HEX NUT, IN A SEPERATE BAG.

UNLESS OTHERWISE SPECIFIED, DIMENSIONS ARE IN INCHES [mm] OVERALL CABLE LENGTH TOLERANCE: ≤12 [305] = +1 [25] / -0 >12 [305] ≤60 [1524] = +2 [51] / -0 >60 [1524] ≤120 [3048] = +4 [102] / -0 >120 [3048] ≤300 [7620] = +6 [152] / -0 >300 [7620] = +5% / -0% ALL OTHER DIMENSIONAL TOLERANCES: .X = ±.2 .XX = ±.02 .XXX = ±.005	APPROVALS DRAWN BY: D.CASTRO CHECKED BY: M.SEDLESKI APPROVED BY: G.PEPIN	DATE 11/12/08 11/14/08 11/14/08	45 BEECHWOOD DRIVE NORTH ANDOVER, MA 01845
	CONFIGURATION DETAILS OF UNDIMENSIONED FEATURES MAY VARY		
PROJECTION 	COLOR VARIATIONS MAY OCCUR	PRODUCT DESCRIPTION <b>ADAPTER CABLE DP M/HD15 F</b>	SIZE <b>A</b> FSCM NO. <b>43321</b> DWG. NO. <b>ADP-HD15D-MF</b>
		SCALE: NONE CAD FILE: ADP-HD15D-MF.SLDDRW	REV. <b>C</b> SHEET 1 OF 1