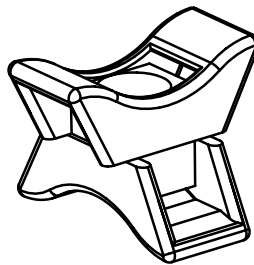
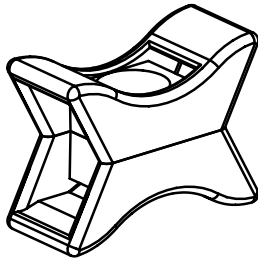
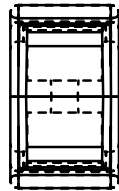
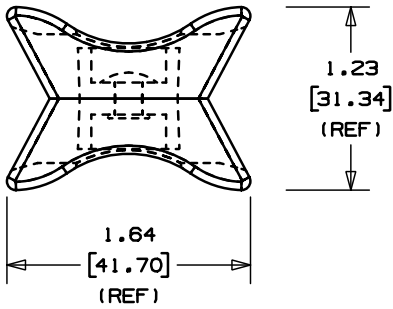
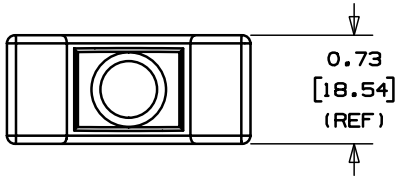


THIS COPY IS PROVIDED ON A RESTRICTED BASIS AND IS NOT TO BE USED IN ANY WAY DETRIMENTAL TO THE INTERESTS OF PANDUIT CORP.



ROTATED 90°

PANDUIT PART NO. *	USE WITH ANY OF THESE CABLE TIES	WEIGHT lbs / 50 (g) / pcs
TMEH-X2-_-	EH	1.14 (517.1)

NOTES:

- SEE CURRENT PRICE SHEET FOR PART NUMBER SUFFIX DESIGNATION FOR PACKAGE SIZE AND COLOR.
- CABLE TIE CROSS-SECTION CODE:
EH = EXTRA HEAVY
- MOUNT MATERIAL: WEATHER RESISTANT NYLON 6/6
RIVET MATERIAL: 5056-S ALUMINUM

DIMENSIONS IN BRACKETS ARE METRIC [mm]	
CAD FILENAME/LAYERS G02446BB_PC_TMEHX2_03	
PANDUIT CORP. TINLEY PARK, ILLINOIS	
SWIVEL TIE MOUNT - HEAVY (TMEH-X2-_-)	
UNLESS OTHERWISE SPECIFIED, DIMENSIONAL TOLERANCES ARE: (.X) ±0.05 (1.3) (.XXX) ±0.010 (0.25) (.XX) ±0.02 (0.5) ANGLES ± 5°	UNLESS OTHERWISE SPECIFIED, ALL DIMENSIONS ARE GIVEN IN INCHES, THIRD ANGLE PROJECTION.
DRAWN BY JAD	MAT'L: SEE NOTE 3
DATE 11/01/00	SCALE FULL
CHK'D	DRAWING NO. GB2446BB
	DWG SIZE A

3	8/27/05	JAD		UPDATE RIVET MATERIL FROM STEEL TO ALUMINUM	GB2446BB	3				
REV	DATE	BY	CHK	DESCRIPTION	ECN	R	CUST	SUP		