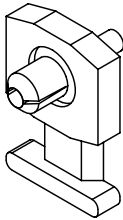
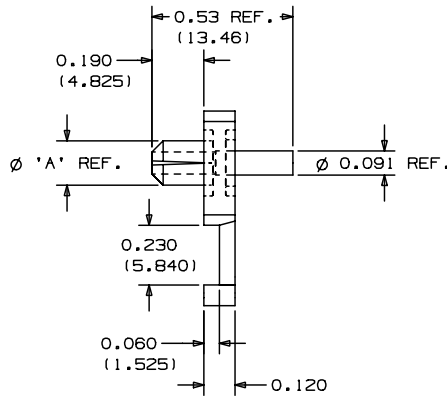
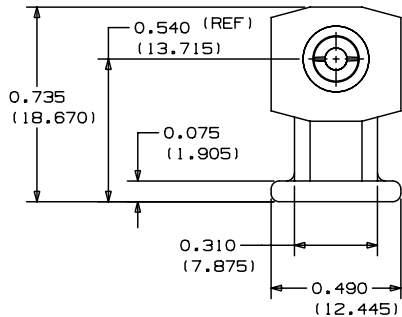


THIS COPY IS PROVIDED ON A RESTRICTED BASIS AND IS NOT TO BE USED IN ANY WAY DETRIMENTAL TO THE INTERESTS OF PANDUIT CORP.



PANDUIT PART NUMBER*	COLOR	DIM. 'A'	REC. HOLE SIZE	WEIGHT (lbs/100 pcs (g)/100 pcs)	USE WITH ANY OF THESE CABLE TIE CROSS-SECTIONS
KIMS-H366	RED	0.155 (3.937)	$\phi .144 \pm 0.002$ (3.7 $\pm$ 0.050)	0.13 (59)	M, I, S
KIMS-H430	BLUE	0.178 (4.521)	$\phi .169 \pm 0.002$ (4.3 $\pm$ 0.050)	0.13 (59)	M, I, S
KIMS-H500	YELLOW	0.205 (5.207)	$\phi .196 \pm 0.002$ (5.0 $\pm$ 0.050)	0.13 (59)	M, I, S



- NOTES:
- SEE CURRENT PRICE SHEET FOR PART NUMBER SUFFIX DESIGNATION FOR PACKAGE SIZE.
  - CABLE TIE CROSS-SECTION CODE: M=MINIATURE; I=INTERMEDIATE; S=STANDARD.

DIMENSIONS IN BRACKETS ARE METRIC [mm]

CAD FILENAME/LAYERS

G00239EE\_PB\_KIMS\_01



CORP. TINLEY PARK, ILLINOIS

KIMS-H  
KNOCK-IN MOUNT

UNLESS OTHERWISE SPECIFIED, DIMENSIONAL TOLERANCES ARE:  
(.X)  $\pm 0.05$  (1.3) (.XXX)  $\pm 0.010$  (0.25)  
(.XX)  $\pm 0.02$  (0.5) ANGLES  $\pm 5^\circ$

UNLESS OTHERWISE SPECIFIED, ALL DIMENSIONS ARE GIVEN IN INCHES, THIRD ANGLE PROJECTION.

REV	DATE	BY	CHK	DESCRIPTION	ECN	R	CUST	SUP
I	7/27/01	LGG		UPDATED	GB0239EE	I		
R	9-5-96	MLD		INITIAL RELEASE	GB0239EE	R		

DRAWN BY MLD

MAT'L:

NYLON 6/6

SCALE 2/1

DATE 9-5-96

CHK'D

DRAWING NO.

GB0239EE

DWG

SIZE A