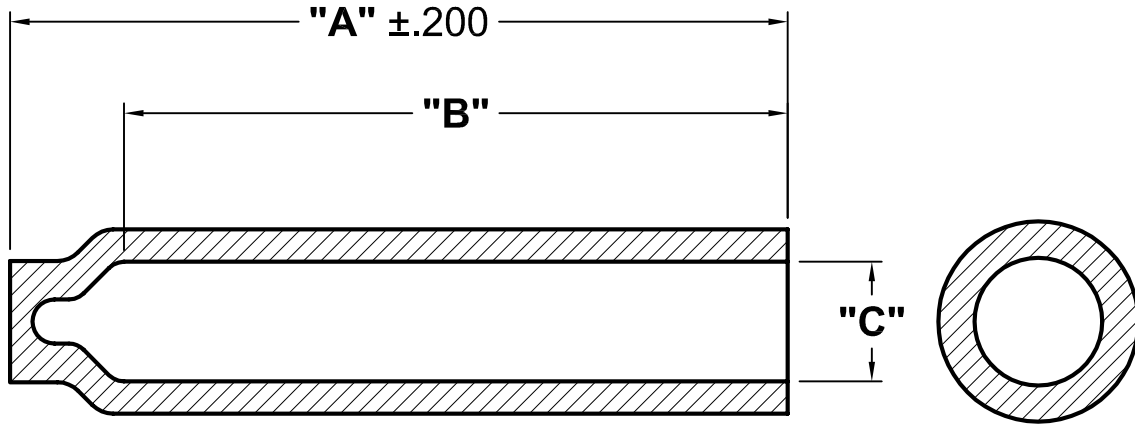


DCP #	REV	DESCRIPTION	DRAWN	DATE	CHECKD	DATE	APPRVD	DATE
882	B	Redrawn	JWM	7/8/02	HO	7/8/02	HO	7/8/02
1479	C	Updated & redrawn	JWM	2/24/03	JC	2/24/03	JC	2/24/02



NOTES:

- Semi-rigid, encapsulant-lined polyolefin
- Minimum shrink temperature: 135°C
- Operating temperature: -55°C to 110°C
- Color: Black

SPC Type No.	Size	Length		Inside Diameter		Wall Thickness*
		"A" Nominal Overall as Supplied	"B" Minimum Open Barrel as Supplied	"C" Minimum Expanded as Supplied	Maximum Recovered After Heating	Total Recovered After Heating
2782	1/8	.87 [22.0]	.50 [12.7]	.125 [3.2]	.023 [0.58]	.048 ±.006 [1.22 ±.15]
2783	3/16	1.10 [27.9]	.60 [15.2]	.187 [4.7]	.060 [1.52]	.062 ±.008 [1.57 ±.20]
2784	1/4	1.12 [28.4]	.60 [15.2]	.250 [6.4]	.080 [2.03]	.078 ±.008 [1.86 ±.20]
2785	3/8	1.25 [31.8]	.72 [18.3]	.375 [9.6]	.090 [2.29]	.082 ±.010 [2.08 ±.25]
2786	1/2	1.27 [32.3]	.85 [21.6]	.500 [12.7]	.090 [2.29]	.100 ±.010 [2.54 ±.25]

*Wall thickness will be less if recovery is restricted during shrinkage

SPC-F004.DWG

TOLERANCES: UNLESS OTHERWISE SPECIFIED, DIMENSIONS ARE FOR REFERENCE PURPOSES ONLY.	DRAWN BY:	DATE:	DRAWING TITLE:			
	Jeff McVicker	8/22/97	Heat Shrinkable Polyolefin End Caps			
	CHECKED BY:	DATE:	SIZE	DWG. NO.	ELECTRONIC FILE	REV
	JOHN COLE	8/24/97	A	TA-118	TA-118.dwg	C
APPROVED BY:	DATE:	SCALE:	U.O.M.: INCHES [mm]	SHEET: 1 OF 1		
Brett Braatz	8/25/97	NTS				

ALL RIGHTS RESERVED. NO PORTION OF THIS PUBLICATION, WHETHER IN WHOLE OR IN PART CAN BE REPRODUCED WITHOUT THE EXPRESS WRITTEN CONSENT OF SPC TECHNOLOGY. DISCLAIMER: ALL STATEMENTS AND TECHNICAL INFORMATION CONTAINED HEREIN ARE BASED UPON INFORMATION AND/OR TESTS WE BELIEVE TO BE ACCURATE AND RELIABLE. SINCE CONDITIONS OF USE ARE BEYOND OUR CONTROL, THE USER SHALL DETERMINE THE SUITABILITY OF THE PRODUCT FOR THE INTENDED USE AND ASSUME ALL RISK AND LIABILITY WHATSOEVER IN CONNECTION THEREWITH.