

## ■ Accessories – Order Separately

### Probe Holders

Order Number	Description	Material	Max. Temp
PS-31	Economy type, fitted with three 1m electrodes, which can be cut to required length	Phenol resin	70°C
PS-3S	Holder for three electrodes		
PS-5S	Holder for five electrodes		
BF-1	Ceramic holder for one electrode for liquids with low specific resistance	Ceramic	150°C
BS-1	High pressure, high temperature holder for one electrode for pressures up to 20kg/cm	Teflon	250°C

Note: For probe holders that use separate electrodes (all except PS31) the probes can be extended using a connector. Use a separator at each join.

### Electrodes and Connectors

103-268/9  
103-270/2/5

Order Number	F03-01-SUS201	F03-02-SUS201
Material	Equivalent to SUS-403	
Description	1m electrode	Connector to join 2 electrodes

Electrode Separators – Use when joining electrodes with connecting nut

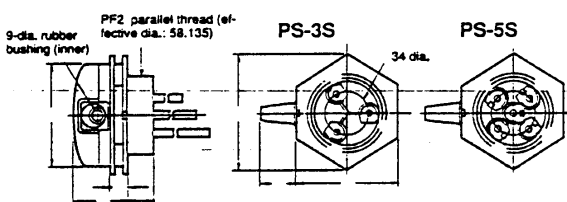
Order Number	No. of Electrodes
F03-14-3P	3
F03-14-5P	5

Connecting Sockets – With screw terminals, DIN rail or surface mounting

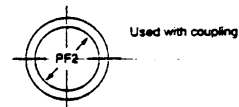
Order Number	Type of Controller
8PFA-1	Standard
PF-083AE	Compact

## Dimensions

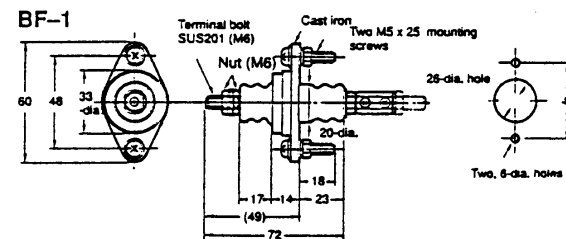
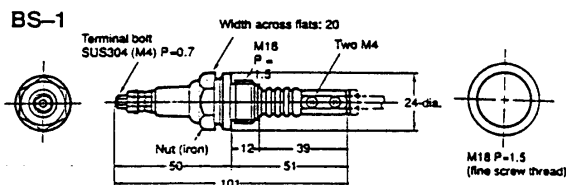
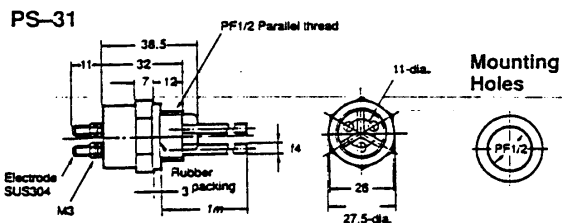
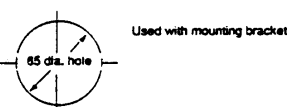
### Probe Holders PS-3S/5S



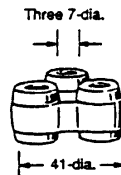
#### Mounting Holes



#### Screw Holes



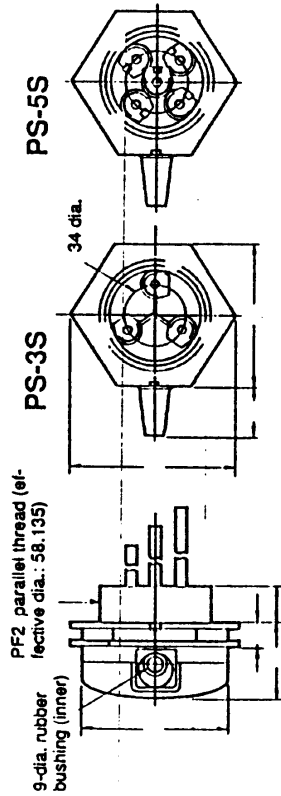
### Separator F03-14 3P (for Three Poles)



Note: For probe holders that use separate electrodes (all except PS31) the probes can be extended using a connector. Use a separator at each join.

## Dimensions

### Probe Holders PS-3S/5S

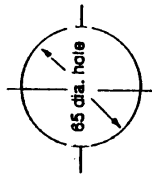


#### Mounting Holes



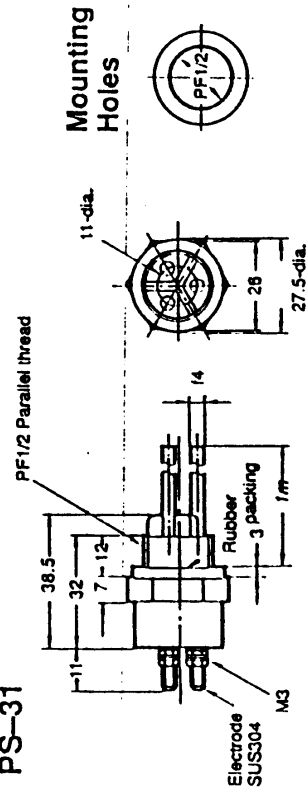
Used with coupling

#### Screw Holes

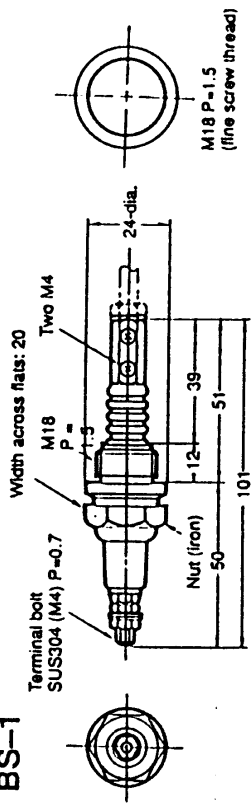


Used with mounting bracket

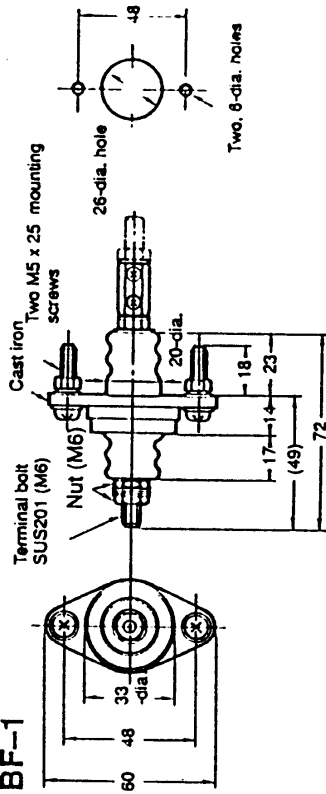
### PS-31



### BS-1



### BF-1



### Separator F03-14 3P (for Three Poles)

