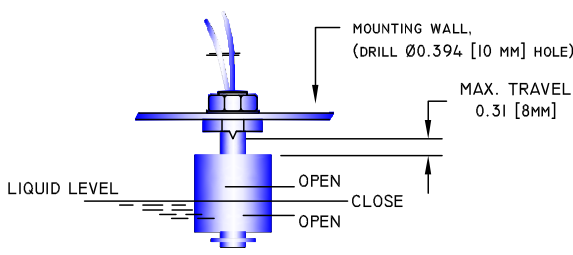
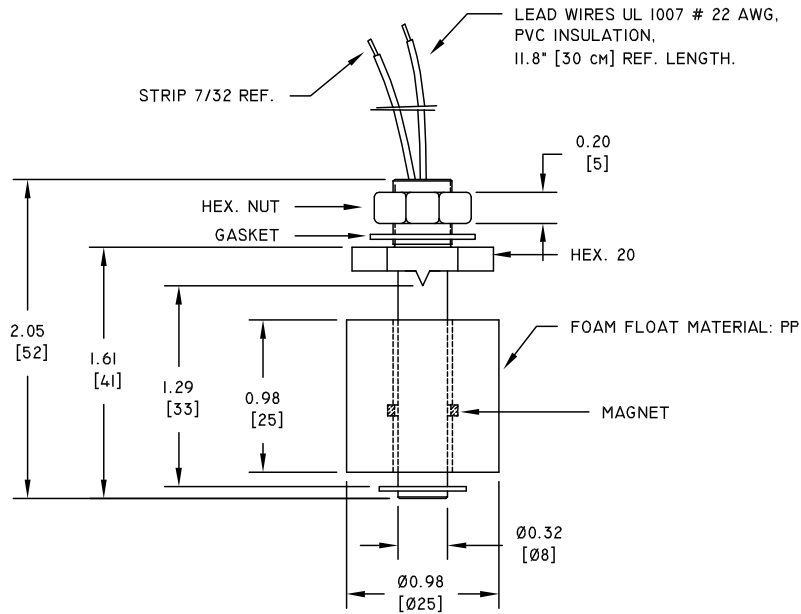


DRAWING #: VFP-21

REV.	DATE	REVISION DESCRIPTION	DR.
A	9/02/03	ORIGINAL	L.L.

- NOTES:
1. ELECTRICAL:
 - 1.1 SWITCHING CAPACITY: MAX. 50 WATT.
 - 1.2 SWITCHING CURRENT: 0.5 AMP.
 - 1.3 CARRY CURRENT: MAX. 1 AMP.
 - 1.4 SWITCHING VOLTAGE: 240 VAC.
 - 1.5 BREAKDOWN VOLTAGE: 200 VDC.
 2. OPERATION:
 - 2.1 CONTACT ARRANGEMENT SPST, REVERSIBLE SWITCH ACTION.
 - 2.2 AVOID MAGNETIC INTERFERENCE.
 - 2.3 OPERATING TEMPERATURE -20° C TO 80° C.
 - 2.4 MAX. PRESSURE: ATMOSPHERE.
 - 2.5 SUITABLE SPECIFIC GRAVITY OF LIQUID 0.8.
 3. FINISH:
 - 3.1 ENCAPSULATED AND POTTED IN PLASTIC CASE.
 - 3.2 LEAD WIRES UL 1007, #22 AWG, PVC INSULATION.
 - 3.3 WEIGHT 18 GR.



WORKING POSITION: VERTICAL

COMUS INTERNATIONAL			
454 ALLWOOD ROAD, CLIFTON, NEW JERSEY 07012		TEL. (973) 777-6900	
ENGINEERING	UNSPECIFIED TOLERANCES	REF.:	SCALE: NONE
QUALITY	DECIMAL: .XX ±.01 [.254] .XXX ±.005 [.127]		DRAWN BY: L.L.
PRODUCTION	FRACTIONAL: ± 1/64 [.397]	DATE: 09/02/2003	
APPROVAL	ANGULAR: ± 1/2°	TITLE: FLOAT SWITCH	
SIGNATURE	DATE	TYPE: SALE	DRAWING #: VFP-21