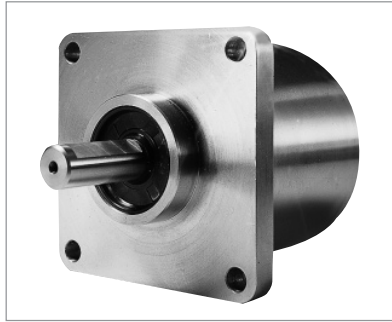


Incremental Shaft Encoders Type RI 59

Industrial types Stainless Steel



NUMBER OF PULSES

- Stainless steel encoder with high protection class
- High corrosion resistance
- Use in the area of food production or if sea-water proof is required
- Application e.g.:
 - packing machines
 - bottling machines
 - washing plants
 - mixers
 - cranes
 - hoists
 - marine outfitters

1 / 2 / 3 / 4 / 5 / 10 / 15 / 20 / 25 / 29 / 30 / 35 / 40 / 50 / 60 / 64 / 70 / 72 / 80 / 100 / 117 / 120 / 125 / 127 / 128 / 136 / 144 / 150 / 180 / 200 / 226 / 230 / 250 / 256 / 280 / 300 / 314 / 350 / 356 / 360 / 375 / 400 / 460 / 480 / 500 / 512 / 600 / 625 / 635 / 720 / 750 / 889 / 900 / 942 / 1,000 / 1,024 / 1,125 / 1,200 / 1,250 / 1,270 / 1,500 / 1,600 / 1,800 / 1,885 / 1,979 / 2,000 / 2,048 / 2,400 / 2,500 / 3,000 / 3,400 / 3,480 / 3,600 / 3,750 / 3,925 / 3,958 / 3,968 / 4,000 / 4,096 / 4,445 / 4,800 / 5,000 / 5,400 / 6,000 / 6,875 / 7,200 / 7,680 / 7,854 / 8,000 / 8,192 / 9,000 / 10,000

Other numbers of pulses available on request.

TECHNICAL DATA mechanical

Shaft diameter	9.52 mm/10 mm
Absolute max. shaft load	radial 160 N / axial 107 N (35/24 lbs)
Absolute maximum speed	10,000 RPM
Torque	≤ 1 Ncm
Moment of inertia	ca. 20 gcm ²
Protection class (EN 60529)	Housing IP 67, bearings IP 67
Operating temperature	-10 ... +70 °C
Storage temperature	-25 ... +85 °C
Vibration proof (IEC 68-2-6)	100 m/s ² (10 ... 2000 Hz)
Shock resistance (IEC 68-2-27)	1,000 m/s ² (6 ms)
Type of connection	1.5 m cable ¹⁾ radial or axial
Housing	stainless steel Ø 58 mm
Flange	Q= square flange 63.5 x 63.5 mm
Weight	approx. 620 g
Bearing life	1 x 10 ¹⁰ revolutions (typ.) at 35% of full rated shaft load 1 x 10 ⁹ revolutions (typ.) at 75% of full rated shaft load 1 x 10 ⁸ revolutions (typ.) at 100% of full rated shaft load For example 30,000 h at 6,000 RPM with a 13 lb radial load

¹⁾ Other cable length on request

Incremental Shaft Encoders Type RI 59

Industrial types

CONNECTION DIAGRAM

Connection cable		Output	
Colour	Lead Ø mm ²	RS 422	push-pull
		T and R	K and I
red	0.5 mm ²	5/10...30 VDC	10 ... 30 VDC
red/yellow	0.14 mm ²	Sense V _{CC}	Sense V _{CC}
white	0.14 mm ²	Channel A	Channel A
white/brown	0.14 mm ²	Channel \bar{A}	Channel \bar{A} ¹⁾
green	0.14 mm ²	Channel B	Channel B
green/brown	0.14 mm ²	Channel \bar{B}	Channel \bar{B} ¹⁾
yellow	0.14 mm ²	Channel N	Channel N
yellow/brown	0.14 mm ²	Channel \bar{N}	Channel \bar{N} ¹⁾
black	0.5 mm ²	GND	GND
black/yellow	0.14 mm ²	Alarm/Sense GND ²⁾	Alarm
screen ³⁾		screen ³⁾	screen ³⁾

¹⁾ only push-pull complementary (I)

²⁾ depending on ordering code

³⁾ connected to housing

ORDERING DATA

