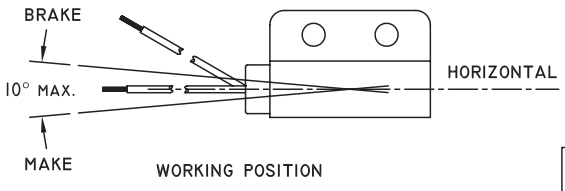
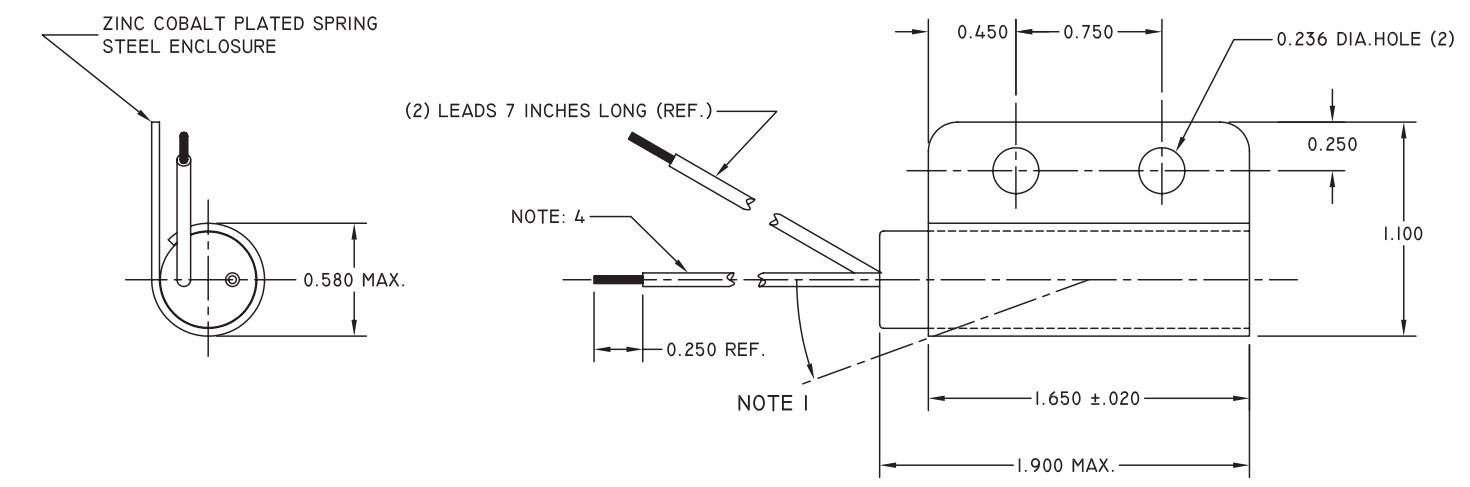


DRAWING #: AG3011-90

REV.	DATE	REVISION DESCRIPTION	DR.
A	04/12/00	ORIGINAL	S.H.
B	05/21/01	REVISION #052101-1	P.C.
C	08/19/04	SEE ECN #2004-171	R.F.

ENVIRONMENTALLY FRIENDLY TILT SWITCH, CONTAINS NO HAZARDOUS MATERIALS

- NOTE:
- CONTACT IS CLOSED ON COUNTER CLOCKWISE ROTATION.
  - LOAD RATING: 1 AMP @ 6-24 VDC., 25 W @ 120 VAC.
  - CONTACT RESISTANCE 3 OHMS MAX.
  - LEAD WIRE #18 AWG. NEOPRENE INSULATION.
  - DIFFERENTIAL ANGLE 10° MAX.



**COMUS INTERNATIONAL**  
 454 ALLWOOD ROAD, CLIFTON, NEW JERSEY 07012 TEL. (973) 777-6900

ENGINEERING		
QUALITY		
PRODUCTION		
APPROVAL	SIGNATURE	DATE

UNSPECIFIED TOLERANCES  
 DECIMAL: .XX ± .01 [.254]  
 .XXX ± .005 [.127]  
 FRACTIONAL: ± 1/64 [.397]  
 ANGULAR: ± 1/2°

REF.:	SCALE: 5:4	DRAWN BY: P.C.	DATE 05/21/01
TITLE: ENCAPSULATED TILT SWITCH			
TYPE: PRODUCTION		DRAWING #: AG3011-90	