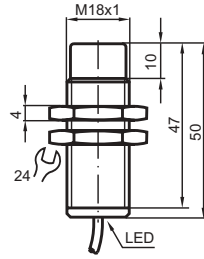


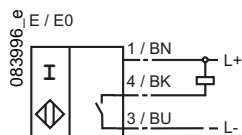
Basic series  
8 mm not embeddable



CE

Switching element function	NPN	Make function
Installation	not embeddable	
Rated operating distance $s_n$	8 mm	
Assured operating distance $s_a$	0 ... 6.48 mm	
Reduction factor $r_{V2A}$	0.7	
Reduction factor $r_{AI}$	0.5	
Reduction factor $r_{Cu}$	0.4	
Reduction factor $r_{Si37}$		
Operating voltage $U_B$	10 ... 30 V	
Operating current $I_L$	0 ... 200 mA	
Switching frequency $f$	0 ... 500 Hz	
No-load supply current $I_0$	≤ 18 mA	
Off-state current $I_r$	≤ 0.5 mA	
Voltage drop $U_d$	≤ 3 V	
Short circuit protection	pulsing	
Polarity reversal protected	yes	
Indication of the switching state	all direction LED, yellow	
Ambient temperature	-25 ... 70 °C (248 ... 343 K)	
Protection degree	IP67	
Connection type	2 m, PVC-cable	
Core cross-section	0.34 mm <sup>2</sup>	
Housing material	brass, nickel plated	
Sensing face	PBT	
Standard conformity	EN 60947-5-2	

Connection



06.11.2001