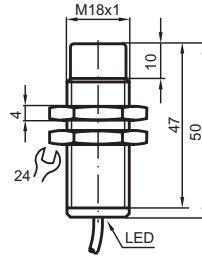


Basic series

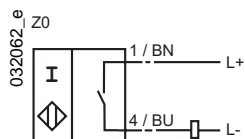
8 mm not embeddable



CE

Switching element function	DC	Make function
Installation	not embeddable	
Rated operating distance s_n	8 mm	
Assured operating distance s_a	0 ... 6.5 mm	
Reduction factor r_{V2A}	0.73	
Reduction factor r_{AI}	0.43	
Reduction factor r_{Cu}	0.42	
Operating voltage U_B	6 ... 60 V	
Operating current I_L	4 ... 100 mA	
Switching frequency f	0 ... 1000 Hz	
Off-state current I_r	≤ 1 mA	
Voltage drop U_d	≤ 6 V	
Short circuit protection	no	
Polarity reversal protected	tolerant	
Indication of the switching state	all direction LED, yellow	
Ambient temperature	-25 ... 70 °C (248 ... 343 K)	
Protection degree	IP67	
Connection type	2 m, PVC-cable	
Core cross-section	0.34 mm ²	
Housing material	brass, nickel plated	
Sensing face	PBT	
Standard conformity	EN 60947-5-2	

Connection



06.11.2001